

# Bee City USA

Bringing communities together to sustain pollinators, in particular the more than 3,600 species of native bees in this country, by increasing the abundance of native plants, providing nest sites, and reducing the use of pesticides.



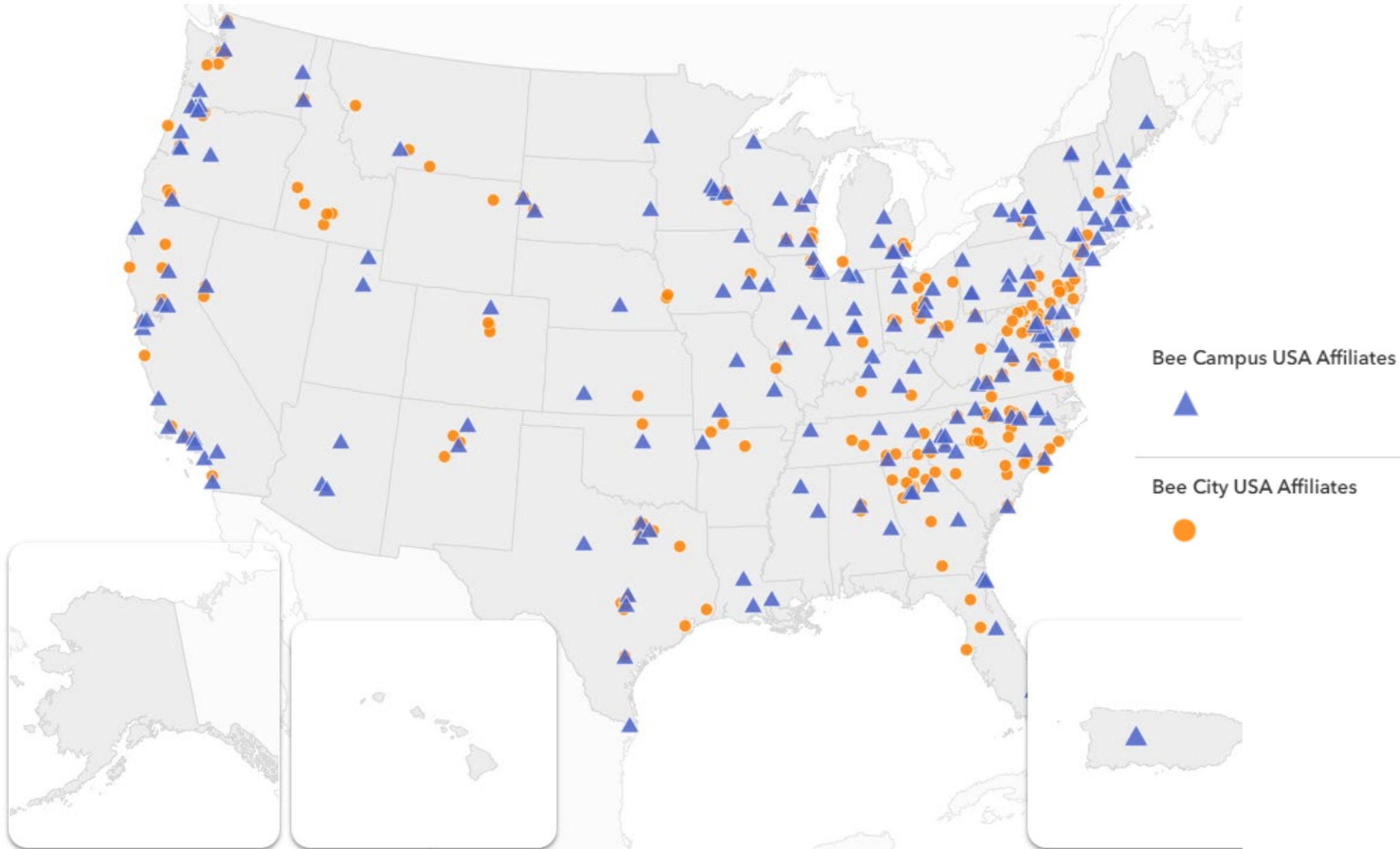
# Pollinator Declines

Globally: Up to 40% of pollinator species may be at risk of extinction in the coming years.

North America:  
More than a quarter of bumble bees species are in decline



Photo: Rusty-patched bumble bee (*Bombus affinis*), Rich Hatfield



# Bee City in Tennessee



## Five Tennessee municipalities

- Bell Buckle
- Cleveland
- Lookout Mountain
- Thompson's Station
- Walden

Home

Cities can protect pollinator populations with help from Bee City USA



*Pollinator garden in Thompson's Station along greenway featured in February 2024 Tennessee Town and City*

# Bee City USA



**\*Please note, this program is not about beekeeping and producing honey**

# Bee City USA Commitments

---

**It's about increasing native plants, reducing pesticides, and sharing information  
It also helps reduce maintenance and irrigation costs, and makes planting areas more visually exciting**

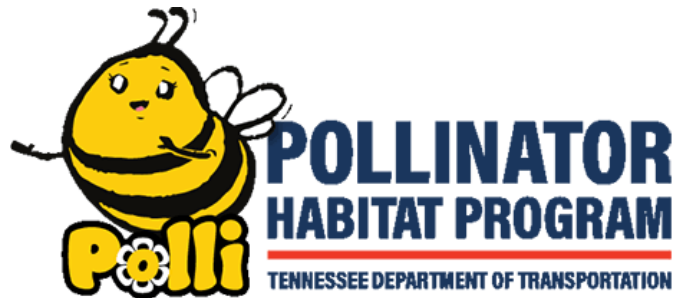


I-24 in Clarksville, TN

# TDOT Pollinator Habitat Program

TDOT is also supporting native landscaping:

- Creating educational materials
- Building and maintaining pollinator habitat along their over 13,000 miles of state-maintained roadways and welcome centers
- Modifying mowing schedules to be compatible with pollinator cycles, which cuts costs and increases habitat
- Sending out native seed packets to citizens



<https://tnpollinators.org>

# Bee City USA Commitments



**Establish a standing Bee City USA committee to advocate for pollinators.**

The Sustainability Commission would be the sponsor and advocate



# Bee City USA Commitments



**Create and enhance pollinator habitat on public and private land by increasing the abundance of native plants and providing nest sites.**

Work with City Departments to expand pollinator habitats at various municipal locations.

# Bee City USA Commitments



## **Reduce the use of pesticides.**

Create an integrated pest management (IPM) plan designed to prevent pest problems, reduce pesticide use, and expand the use of non-chemical pest management methods.

Coordinate an interdepartmental IPM plan that makes a good faith effort to reduce pesticides.

# Bee City USA Commitments



## **Incorporate pollinator-conscious practices into city policies and plans.**

Establish a policy in the city's comprehensive plan to acknowledge and commit to the Bee City USA designation encouraging native landscaping and pollinator habitat.

Create a list of recommended native plants and regional suppliers

# Bee City USA Commitments



**Host at least one pollinator awareness event each year.**

Create partnerships with existing efforts or this could be a ceremony commissioning a pollinator garden.

# Bee City USA Commitments



**Publicly acknowledge Bee City USA affiliation with signs and an online presence.**

Display at least one sign designating your community as a Bee City USA affiliate. Affiliates also commit to maintaining an online presence where they share information about their activities as well as their native plant list, native plant supplier list, and integrated pest management plan.

Coordinate with the City's communication team to raise awareness, post a sign, and create a webpage.

# Bee City USA Commitments



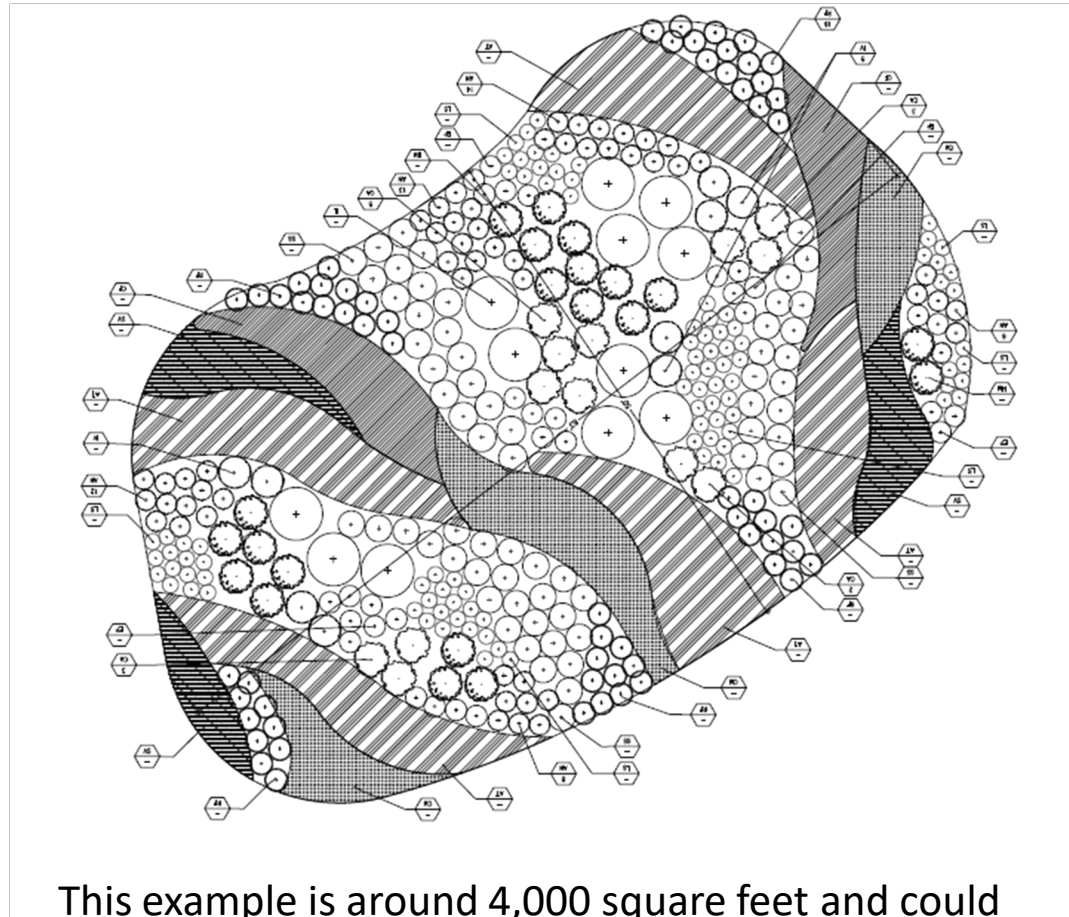
## **Pay an initial application fee and annual renewal fee.**

Franklin would pay \$400 with a max payment of \$500 once over 100,000 population

## **Annually apply for renewal and report on the previous year's activities.**

Submit a renewal application once your community has been affiliated with Bee City USA for a full calendar year. Renewals allow Xerces to monitor affiliate activities and share the great work they're doing.

# Franklin Demonstration Pollinator Habitat



This example is around 4,000 square feet and could be integrated into various open space locations on City-owned property

## SHRUBS



New Jersey Tea



Swamp Mallow



Winterberry/ Ilex verticillata



virginia Sweetspire/Itea Virginia

## PERENNIALS



Aster Novae-Angliae/  
New England Aster



Echinacea Purpurea/  
Purple Coneflower



Liatris Spicata/  
Dense Gayfeather



Rudbeckia Fulgida/  
Orange Coneflower

## PERENNIALS/SEED



Asclepias Tuberosa/  
Butterfly Milkweed



Chamaecrista Fasciculata/  
Partridge Pea



Coreopsis Major/  
Greater Tickseed



Silene Virginica/Fire Pink

## NATIVE ORNAMENTAL GRASS



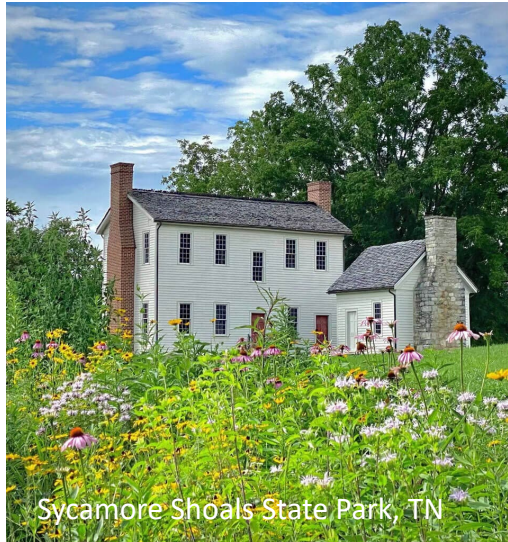
# Native Pollinator Habitat Examples



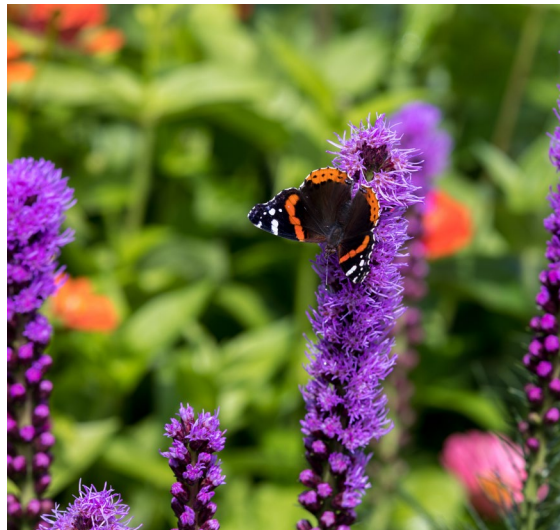
Franklin Library



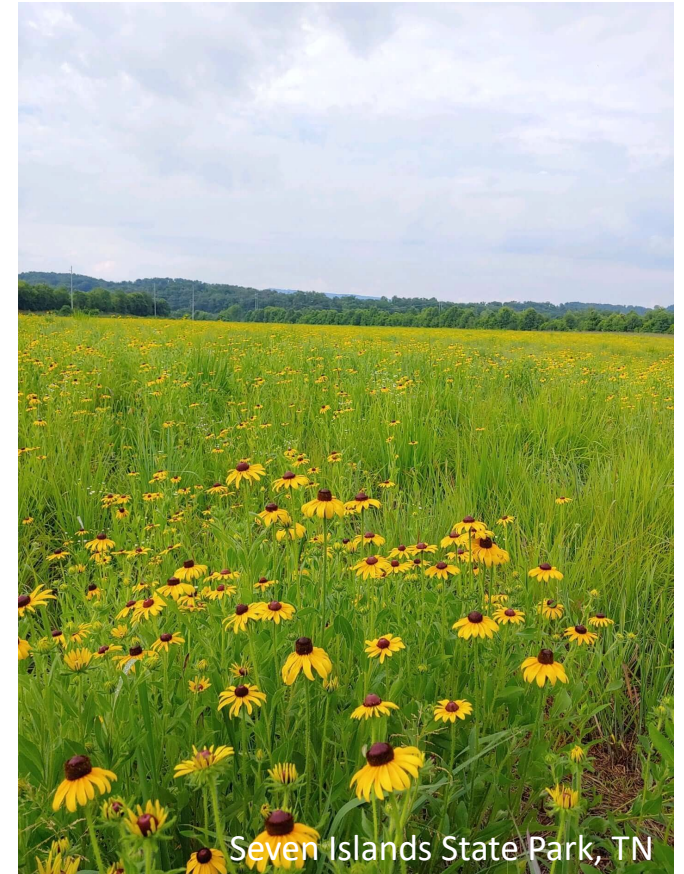
Big Hill Pond State Park, TN



Sycamore Shoals State Park, TN



Pinehurst Arboretum



Seven Islands State Park, TN



# Brentwood Library Pollinator Garden



# Process To-Date & Next Steps



1. Sustainability Commission voted to recommend approval of Resolution 2024-15 on April 12<sup>th</sup>
2. Tree Commission voted to recommend approval of Resolution 2024-15 to the BOMA on April 22<sup>nd</sup>
3. Present Resolution 2024-15 at May 14<sup>th</sup> BOMA WS and subsequent voting meeting
4. Complete application and pay \$400 fee

# Next Steps

---

## 5. Implement the program

- Interdepartmental staff team and the Sustainability Commission
- Identify locations for potential pollinator habitat on City property
- Potential partnerships with local non-profit groups, eagle scout projects, etc
- Budget implications for annual habitat expansion on city property

## 6. Add statement of support and encouragement in Envision Franklin.

## 7. Provide Integrated Pest Management Plan

## 8. Increase pollinator habitat and host at least one event annually

