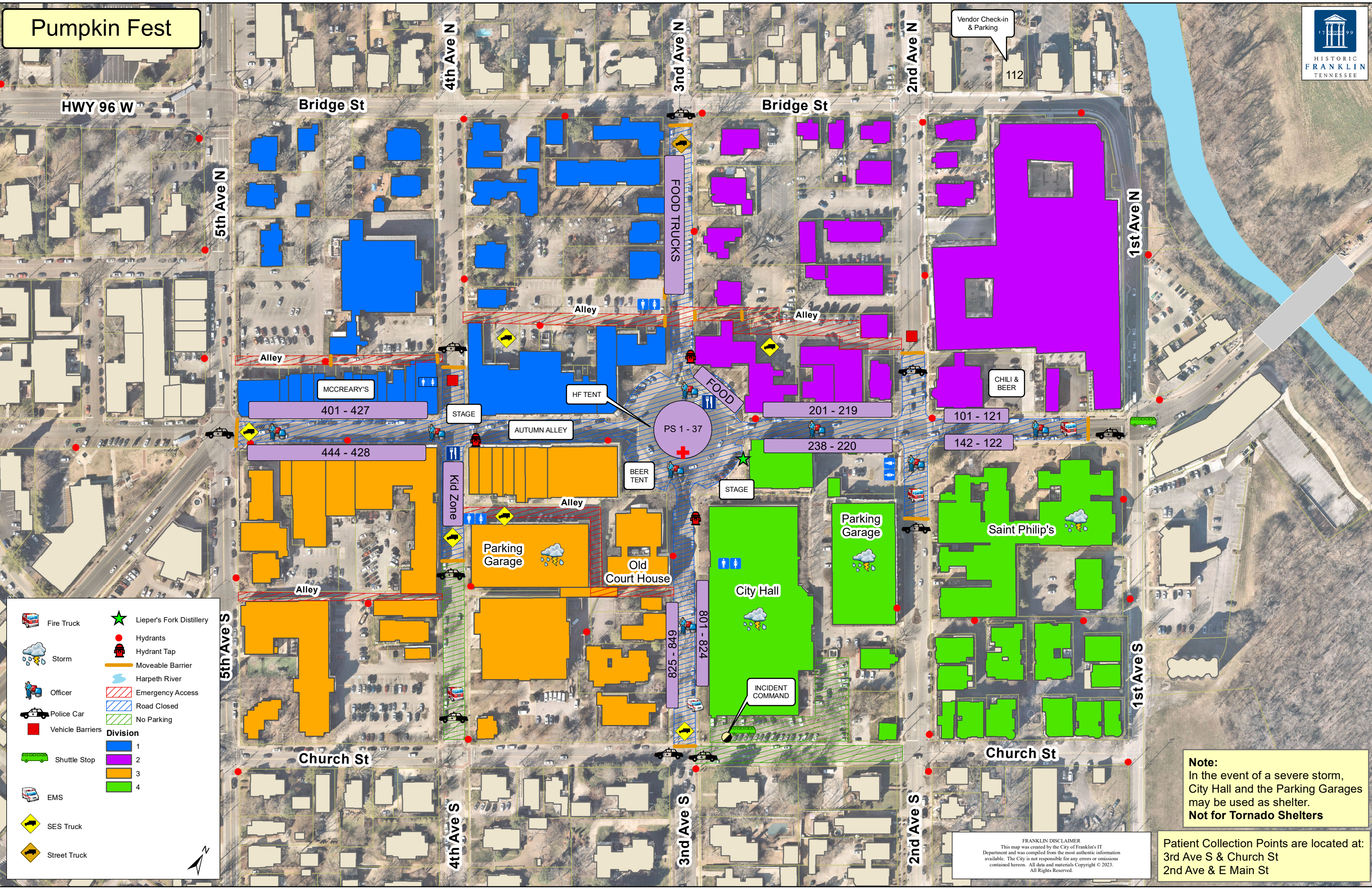


Pumpkin Fest



	Fire Truck		Lieper's Fork Distillery
	Storm		Hydrants
	Officer		Hydrant Tap
	Police Car		Moveable Barrier
	Vehicle Barriers		Harpeth River
	Shuttle Stop		Emergency Access
	EMS		Road Closed
	SES Truck		No Parking
	Street Truck	Division	
			1
			2
			3
			4

Note:
In the event of a severe storm,
City Hall and the Parking Garages
may be used as shelter.
Not for Tornado Shelters

FRANKLIN DISCLAIMER
This map was created by the City of Franklin's IT Department and was compiled from the most authentic information available. The City is not responsible for any errors or omissions contained herein. All data and materials Copyright © 2023. All Rights Reserved.

Patient Collection Points are located at:
3rd Ave S & Church St
2nd Ave & E Main St