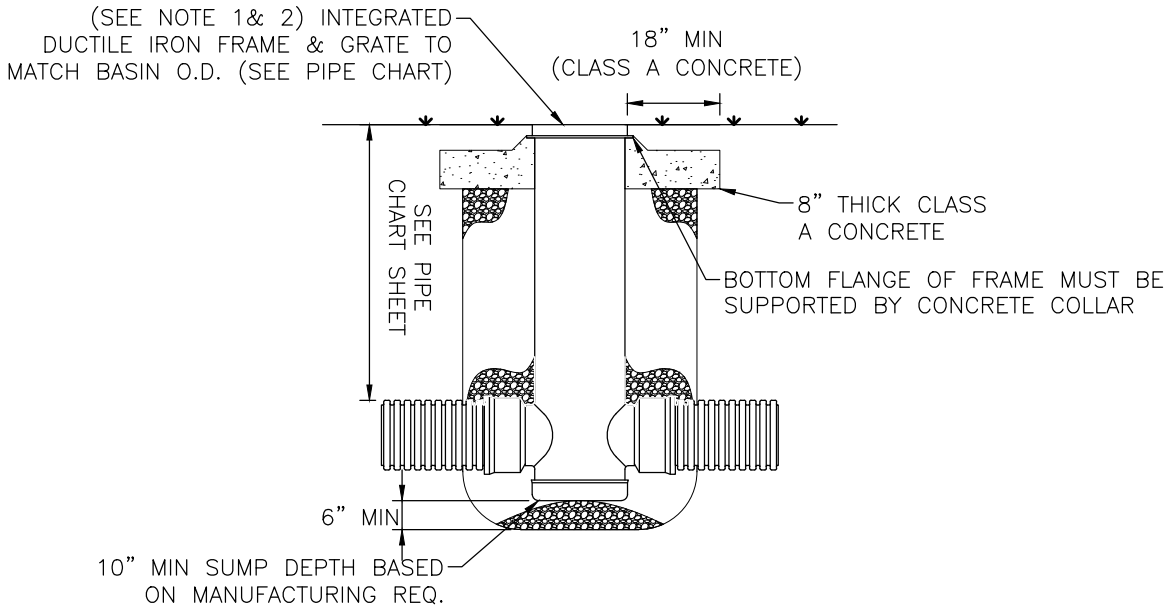
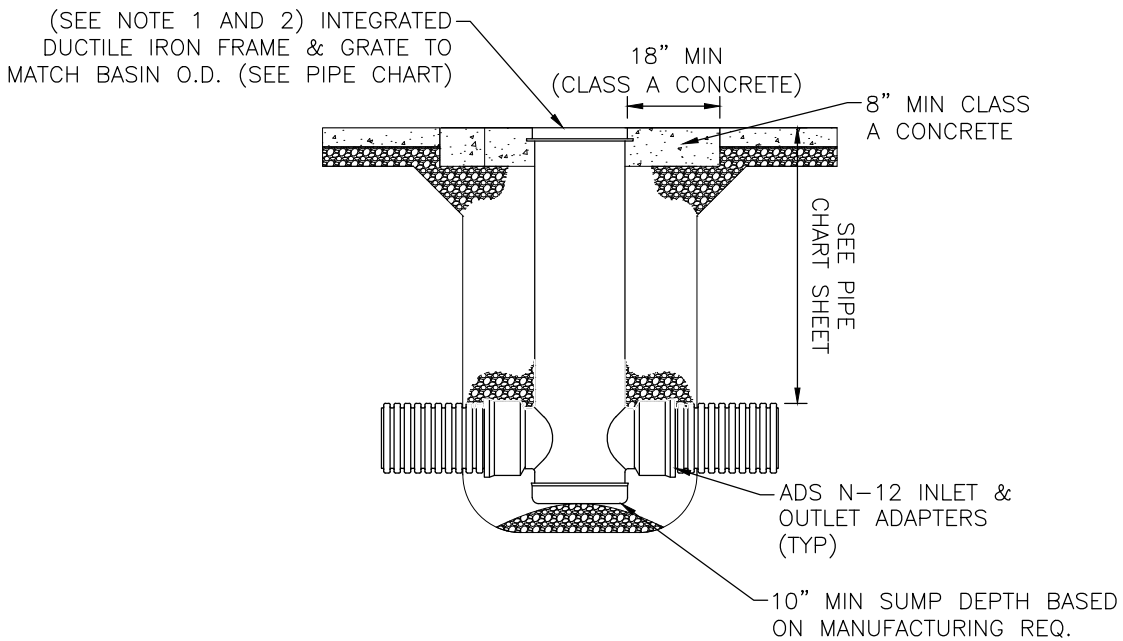


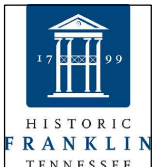
NYLOPLAST DRAIN BASIN INSTALLED IN GRASS AREAS



NYLOPLAST DRAIN BASIN INSTALLED IN CONCRETE SIDEWALK



- 1) GRATES/SOLID COVER SHALL BE DUCTILE IRON PER ASTM A536 GRADE 70-50-05.
- 2) FRAMES SHALL BE DUCTILE IRON PER ASTM A536 GRADE 70-50-05.
- 3) DRAIN BASIN TO BE CUSTOM MANUFACTURED ACCORDING TO PLAN DETAILS. RISERS ARE NEEDED FOR BASINS OVER 84" DUE TO SHIPPING RESTRICTIONS.
- 4) DRAINAGE CONNECTION STUB JOINT TIGHTNESS SHALL CONFORM TO ASTM D3212 FOR CORRUGATED HDPE (ADS N-12).
- 5) ALL CONNECTIONS SHALL BE WATER TIGHT.
- 6) BACKFILL PER TDOT STANDARD DRAWING FOR FLEXIBLE PIPE INSTALLATION.



CITY OF FRANKLIN
NOT TO SCALE

CITY ENGINEER:

Paul P. Hoge

DATE:
03/20/2023

DWG. NO.

CS24