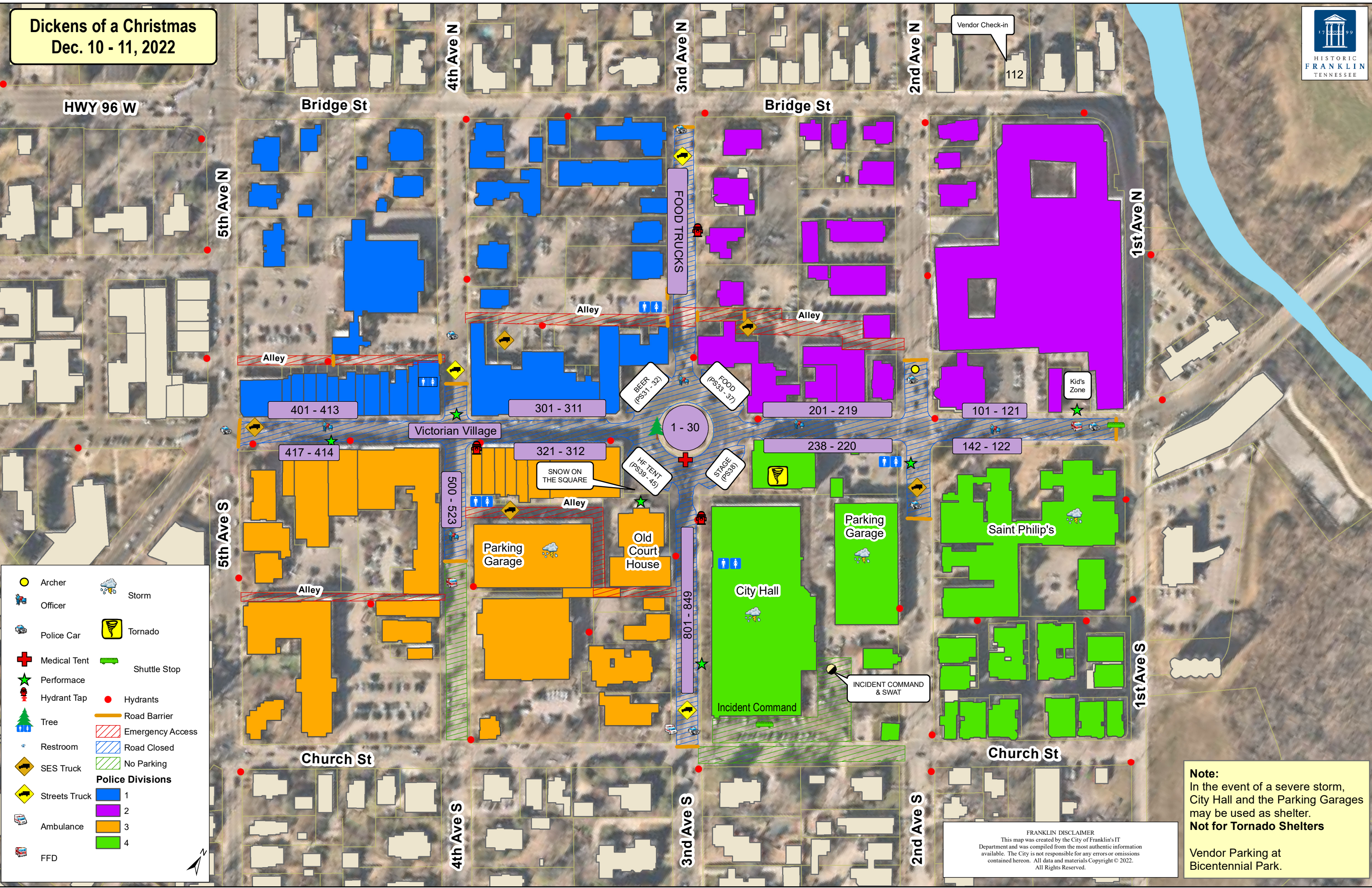


Dickens of a Christmas  
Dec. 10 - 11, 2022



Archer

Officer

Police Car

Medical Tent

Performance

Hydrant Tap

Tree

Restroom

SES Truck

Streets Truck

Ambulance

FFD

Storm

Tornado

Shuttle Stop

Hydrants

Road Barrier

Emergency Access

Road Closed

No Parking

**Police Divisions**

1

2

3

4

FRANKLIN DISCLAIMER  
This map was created by the City of Franklin's IT Department and was compiled from the most authentic information available. The City is not responsible for any errors or omissions contained hereon. All data and materials Copyright © 2022. All Rights Reserved.

**Note:**  
In the event of a severe storm, City Hall and the Parking Garages may be used as shelter.  
**Not for Tornado Shelters**

Vendor Parking at Bicentennial Park.