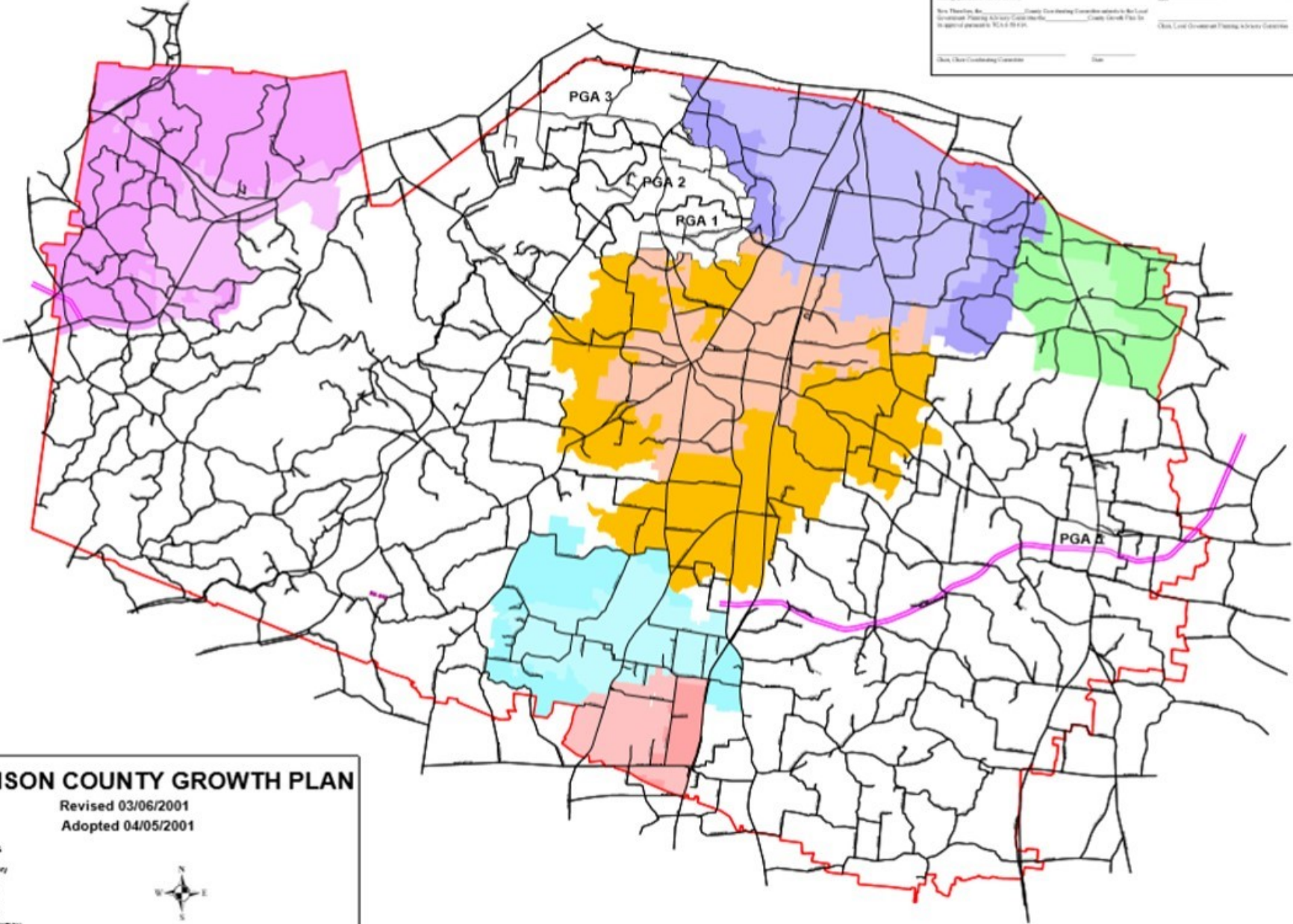


Resolution of County Growth Plan and Continuation of Subdivision	Resolution of Approval By The Local Government Planning Advisory Committee
Whereas, the _____ County Coordinating Committee has developed and recommended to the County and Planning Advisory Committee of _____ County a Growth Plan which complies with T.C.A. § 16-1-101, and	Whereas, the _____ County Coordinating Committee has submitted a County Growth Plan to _____ County, and in compliance, and
Whereas, the County and Planning Advisory Committee has approved the _____ Growth Plan in compliance with T.C.A. § 16-1-101, and	Whereas, the County Coordinating Committee has not had the plan previously approved pursuant to T.C.A. § 16-1-101,
Whereas, the _____ County Coordinating Committee has not had the plan previously approved pursuant to T.C.A. § 16-1-101,	Whereas, the _____ County Growth Plan is hereby approved and continues in force to the _____ date,
Now Therefore, the _____ County Coordinating Committee hereby recommends to the Local Government Planning Advisory Committee the _____ County Growth Plan for its approval pursuant to T.C.A. § 16-1-101.	That the Local Government Planning Advisory Committee _____ Date _____



# WILLIAMSON COUNTY GROWTH PLAN

Revised 03/06/2001

Adopted 04/05/2001

- INTERSTATE
- MAJOR ROAD
- County Boundary
- PGA
- Land Use
- GREENWOOD
- FARMINGTON
- NOLENVILLE
- SPRING HILL
- THOMPSON STATION



Note: Rural Areas are all properties outside the USGs and PGAs.

WILLIAMSON COUNTY PLANNING DEPARTMENT