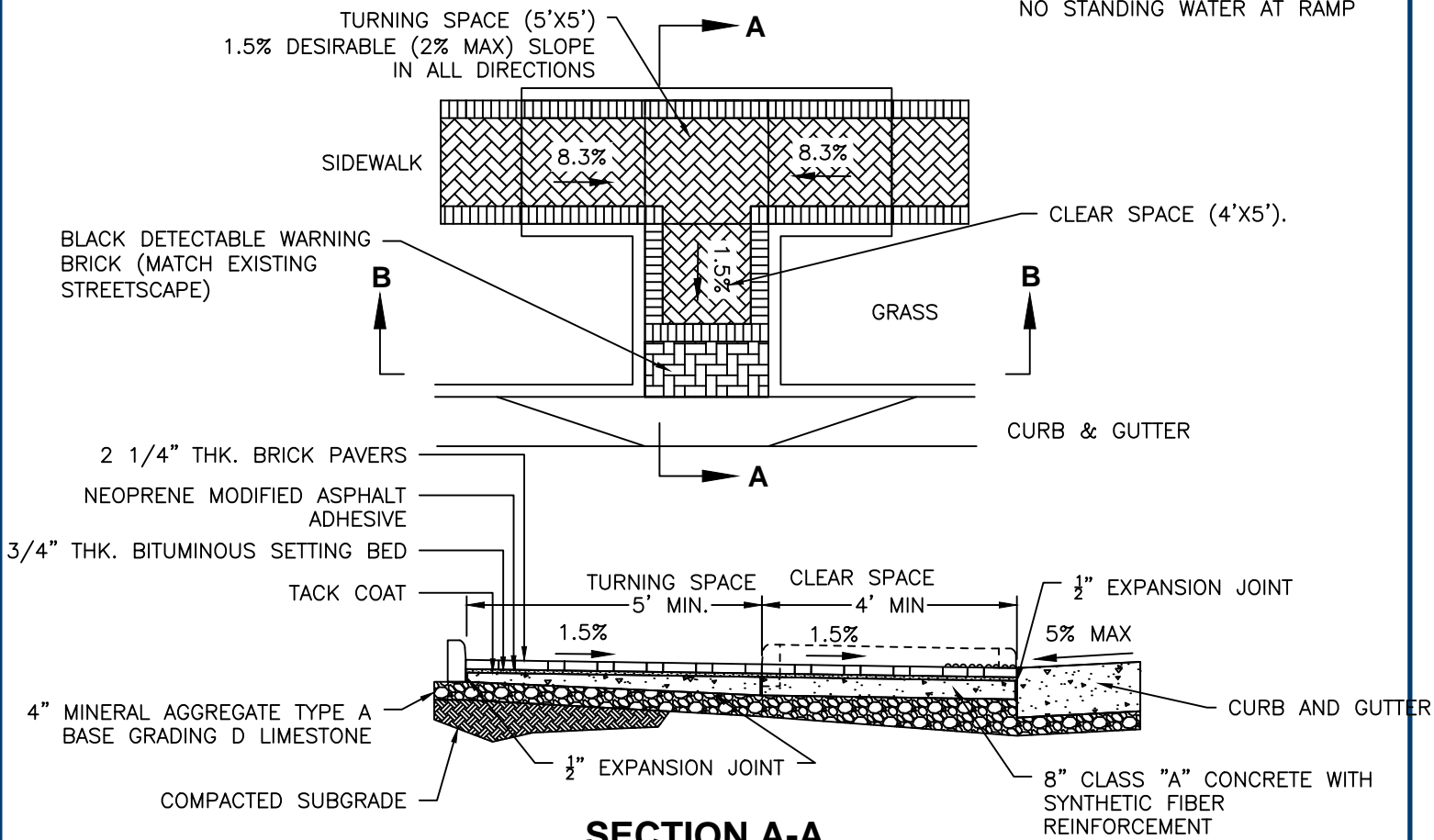
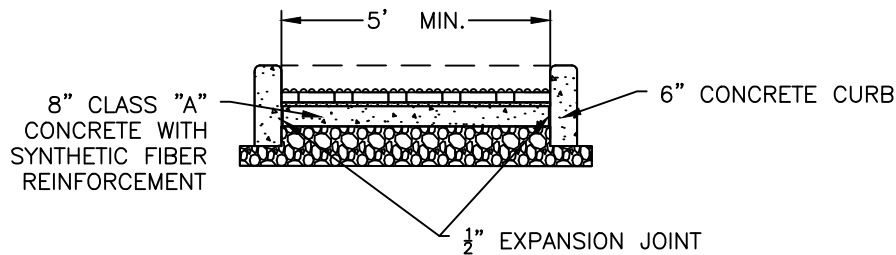


NOTE: CONTRACTOR TO ENSURE NO STANDING WATER AT RAMP



SECTION A-A



SECTION B-B

GENERAL NOTES

1. THIS DETAIL TO BE USED IN DOWNTOWN FRANKLIN GATEWAY CORRIDORS AND CONNECTOR STREETS.
2. PLACE PAVERS IN PATTERNS PER CITY OF FRANKLIN STREETSCAPE PLANS. PLACE PAVERS WITH HAND TIGHT JOINTS NOT TO EXCEED $\frac{1}{8}$ " (MIN $\frac{1}{16}$ "). SAW CUT PAVERS AS NEEDED TO MAINTAIN ABOVE JOINT TOLERANCES.
3. DO NOT USE FILLERS TO FILL JOINT VOIDS OF EXCESSIVE WIDTH. RESET AND SAW CUT PAVERS AS REQUIRED TO ELIMINATE EXCESSIVE JOINT WIDTHS.
4. CONCRETE UNDER BRICK PAVERS SHALL BE A MIN THICKNESS OF: 4" UNDER ALL SIDEWALKS, 6" UNDER ALL DRIVEWAYS AND 8" UNDER ALL RAMPS.
5. A VARIATION OF THE RAMP MAY BE USED IN CERTAIN CIRCUMSTANCES BUT MUST COMPLY WITH PROPOSED ACCESSIBILITY GUIDELINES FOR PEDESTRIAN FACILITIES IN THE PUBLIC RIGHT-OF-WAY
6. DESIRABLE SLOPE TO BE USED UNLESS OTHERWISE DIRECTED BY THE CITY OF FRANKLIN.
7. MINIMUM TURNING SPACE IS 5'X5' AND MIN CLEAR SPACE 4'X5' OUTSIDE TRAVEL WAY.
8. GRADE BREAKS AT THE TOP AND BOTTOM OF CURB RAMP RUNS SHALL BE PERPENDICULAR TO THE DIRECTION OF THE RAMP RUN. GRADE BREAKS SHALL NOT BE PERMITTED ON THE SURFACE OF RAMP RUNS AND TURNING SPACES. SURFACE SLOPE THAT MEET AT GRADE BREAKS SHALL BE FLUSH.
9. 4" MIN BASE STONE (303-01 MINERAL AGGREGATE, TYPE "A" BASE, GRADING "D" REQUIRED UNDER ALL SIDEWALKS AND CURB.
N.T.S

BRICK COMBINATION CURB RAMP

DWG. NO.

SS-11



HISTORIC
FRANKLIN
TENNESSEE

CITY OF FRANKLIN

NOT TO SCALE

CITY
ENGINEER:

Paul P. Hoge

DATE:

7/1/2021