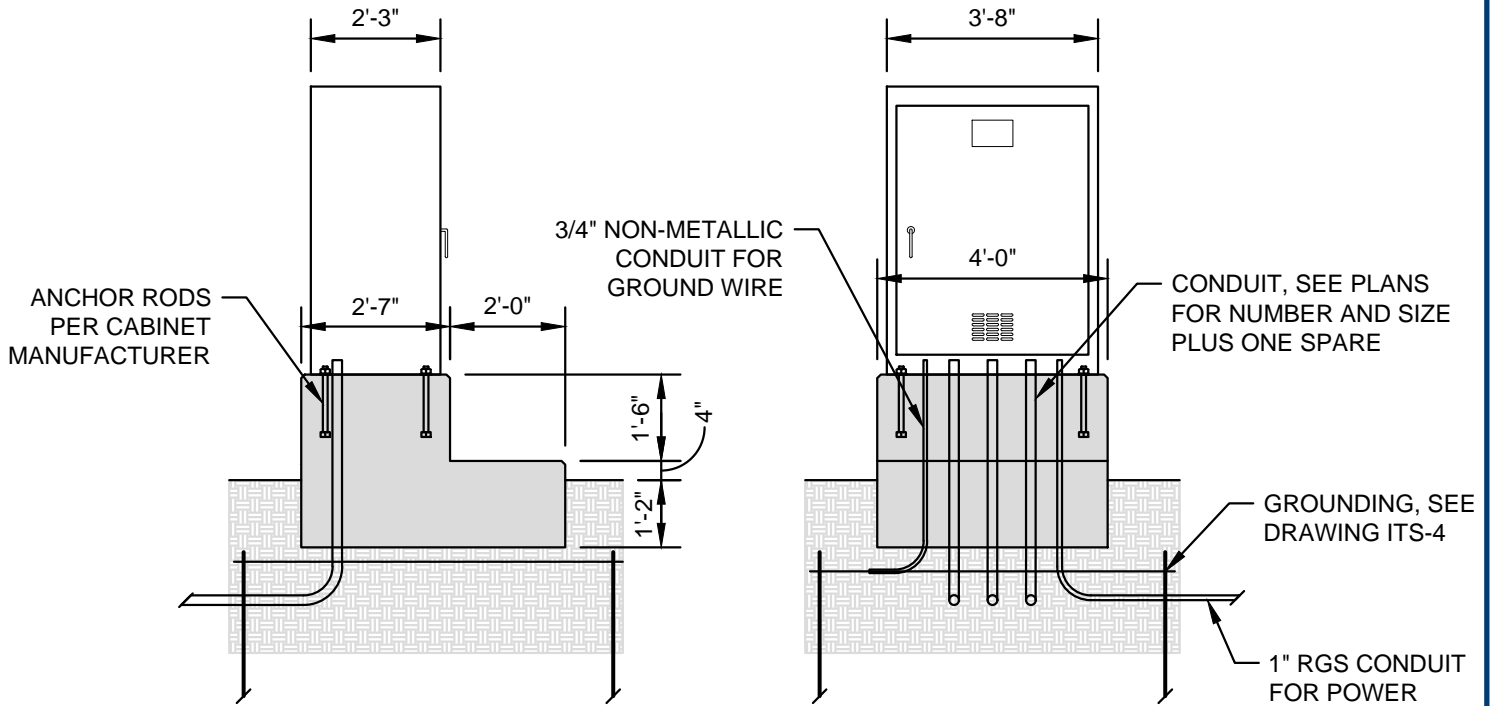
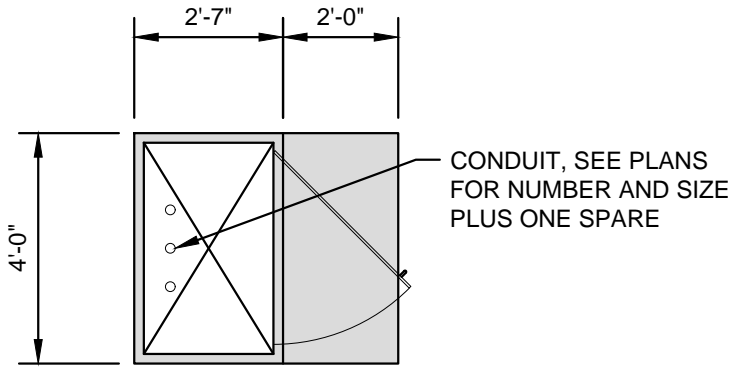


ROADWAY TRAFFIC
(SEE NOTE 3)



NOTES

1. DETAIL TO BE USED WITH COF 730FR TS-2 TYPE 1 CABINET.
2. FINISH SHALL BE POWDER COATED TO MATCH SHERWIN-WILLIAMS #PGS4-1059-FC (FRANKLIN GREEN) WHEN LOCATED IN HISTORIC DOWNTOWN FRANKLIN AREA OR VINYL WRAP AS APPROVED BY THE COF ENGINEERING DEPARTMENT.
3. BASE MOUNTED CABINET SHALL BE SITUATED IN THE OPTIMUM POSITION FOR VIEWING THE CONTROLLER OPERATION AND THE ON-STREET SIGNAL DISPLAYS SIMULTANEOUSLY.
4. CONCRETE: CLASS A (3,000 PSI, 6% AIR)
5. GROUNDING: SEE DRAWING ITS-4
6. CONDUIT:
 - A. SEE PLANS FOR NUMBER AND SIZE.
 - B. PROVIDE ADDITIONAL 2" SPARE CONDUIT.
 - C. PROVIDE 1" RGS CONDUIT FOR POWER.
 - D. PROVIDE 3/4" NON-METALLIC CONDUIT FOR GROUND WIRE.
 - E. ALL CONDUIT SHALL USE LONG SWEEP RADII (MINIMUM 6" RADIUS).



HISTORIC
FRANKLIN
TENNESSEE

TRAFFIC SIGNAL CABINET FOUNDATION

CITY OF FRANKLIN
NOT TO SCALE

CITY
ENGINEER:

Paul P. Hoyle

DATE:
7/1/2021

DWG. NO.

ITS-3