

2006 HOUSEHOLD SURVEY
City of Franklin, Tennessee
June 2006

Franklin Board of Mayor and Aldermen

Ernie Bacon	Beverly Burger
Dan Klatt	Robert Kriebel
Pam Lewis	Dana McLendon
Mayor Tom Miller	Dennis Phillips
Dodson Randolph	

Franklin Municipal Planning Commission

Carol Croop	Scott Harrison
Mike Hathaway	Roger Lindsey
Alma McLemore	Fred Reynolds
Ann Petersen	Dennis Phillips
Chris Ude	

City Administrator	Jay Johnson
Asst. City Administrator	Randy Whetmore
Planning Director	Bob Martin

Established 1799

Project Manager

Kelly C. Dannenfelser Planning Department

Project Team

Susan Coleman	Planning Department
Mike Person	MIT Department
Takesia Richardson	MIT Department
Adam Watts	Planning Department
Tracy Davis and Randy Carlson	Planning Department



2006 HOUSEHOLD SURVEY TABLE OF CONTENTS

- | | |
|--|-------------|
| 1. Executive Summary | iv |
| 2. City of Franklin Aldermanic Ward Map | viii |
| 3. 2006 Household Survey Results by
Aldermanic Ward and by Total Response | 1 |
| 4. Comparison of Past Survey Results of 1987,
1996 and 2000 | 41 |

2006 FRANKLIN HOUSEHOLD SURVEY EXECUTIVE SUMMARY

INTRODUCTION

Since 1987, the Franklin Household Survey has served as a reliable source of information for measuring its performance and for identifying the needs of the community. Although it is merely one aspect of the City's citizen-participation process, the survey is vital to the success of City departments and ultimately the community at large. The City Administrator, the Board of Mayor and Alderman (BOMA), the Franklin Municipal Planning Commission (FMPC), and various City departments will use the results of the 2006 Household Survey to assess their performance, to identify potential problems that affect City residents, and to identify issues that are important to Franklin households that might affect growth-management and decision-making efforts.

FINDINGS

- **Quality of Life:** The overwhelming majority of the Household Survey respondents (95 percent) are very satisfied or satisfied with the quality of life in Franklin.
- **Citizen Characteristics:** Over 90 percent of the respondents are not Franklin natives, and over 60 percent moved here within the past ten years. About 40 percent moved from some other state, and 20 percent moved from the Nashville/Davidson County area. Many factors brought them to Franklin, such as its small-town character, new jobs, Franklin's historic atmosphere, and the quality of schools.
- **City Services:** The respondents gave high marks to City services, such as Police and Fire services, as well as City conditions, such as street cleanliness and maintenance.
- **Water Quality:** Even though three-fourths of the respondents indicated that they were very satisfied or satisfied with the quality of water in Franklin, comments about its smell and taste was a consistent theme in the Comments section.
- **Neighborhoods:** The respondents like the proximity to activity centers, the beauty and landscaping of their neighborhoods, and that they are clean and well-maintained. Dislikes include traffic and congestion, the lack of sidewalks and connectivity, and speeding cars. However, the responses were generally weighted more toward "likes" than "dislikes".

- **The Pace and Types of Growth:** A majority of the respondents believe that Franklin’s population growth has been too fast within the last five years. Development should be permitted to continue, but there should be additional regulations to better control the quality of development; otherwise, the amount of additional development should be limited. Companies should be encouraged to locate their offices (for example, corporate headquarters and office developments) in Franklin, and only clean, light industries should be encouraged to come here. Not surprisingly, almost nine out of ten of those who responded to the survey indicated that the City should continue to charge fees for new development to cover the cost of providing municipal services to them.
- **City Direction and Status:** Overall, the City of Franklin is on the right track. It is doing a good job of keeping citizens informed about City issues, and City employees are responsive to citizens’ concerns. The largest percentage of the respondents neither agree nor disagree with the statements that the BOMA is responsive to the needs of the citizens, that the BOMA effectively represents the attitudes and opinions of Franklin residents, and that the City is doing a good job of managing its finances.
- **Community Facilities:** Exercise trails, playground equipment, picnic shelters, and athletic fields are the facilities used most often by the citizens. A performing arts center/amphitheater, a zoological or botanical garden, and more parks and open space would be beneficial. The City also needs more trails for recreational use, a public golf course, cultural facilities, and a museum.
- **Housing:** The City should encourage a mix of housing styles to serve changing preferences. Most of the respondents (80 percent) live in single-family homes. Almost one-half believe that it would not be appropriate to include multifamily housing with single-family housing in the same neighborhood, although about 35 percent feel that it might depend on the design of the dwellings. When asked if Franklin should have mixed-income neighborhoods, 38 percent said that it would depend on the design of the homes, 32 percent said yes, and 28 percent said no.
- **Proximate Commercial and Residential Development:** There should be some distance between commercial and residential development.
- **Traffic:** Four out of ten respondents perceive local streets to always or usually be congested, and one-half believe this to sometimes be true. Some of the most important traffic-related issues are congestion, time lost due to congestion, driving stress, lack of enforcement of traffic laws, the use of cell phones, rude drivers, and the need for better traffic-light coordination.
- **Commuting Patterns:** About one-half of the respondents commute out of town to work, primarily to Nashville (29 percent) and Brentwood (10 percent), but only about one-third of other household members work outside of Franklin.
- **Curbside Recycling:** Almost two-thirds of the respondents do not recycle glass, aluminum or paper, but they would like the City to implement a recycling program, although they would not be willing to pay a fee for this service.
- **Receiving Information:** Most of the respondents receive their information about the City through the newspaper, by word of mouth, on Cable TV Channel 10 on Comcast, and through homeowners’ association newsletters. E-mails and websites by the Aldermen are useful. The Franklin website is rarely or never visited, but, when it is, most view the sections on information, the calendar of events, and departments and services.

METHODOLOGY

The 2006 Franklin Household Survey update resulted from a review of the previous survey by the City departments. New questions were proposed, and the draft survey was reviewed by the FMPC, the Franklin Budget and Finance Committee, and the BOMA. Comments and suggestions from all bodies were considered in the revisions to the survey.

Following approval by the BOMA and the FMPC, a public information/marketing campaign was initiated to announce the survey and to encourage citizen participation. The City purchased advertisements in local newspapers and on radio and television stations. A story was run several times on the local NBC affiliate WSMV (Nashville Channel 4 News) to announce the survey release. Mayor Tom Miller was featured in a television commercial urging Franklin residents to participate in the survey, and it was the topic of discussion on a Comcast Cable Channel 10 show called “Community Outlook”. Flyers were mailed with City water bills to households. Several articles and even a cartoon were published in the local newspapers that asked residents to use this opportunity to voice their opinions and to get involved in local government.

The City relied upon the Hansen database for addressing to ensure that every dwelling unit in Franklin received a survey, which was mailed in late March, along with a flyer announcing its availability on-line. This was the first year that an on-line version was used, and approximately 20 percent of the respondents took advantage of this service.

Based on the results, two Excel spreadsheets were created. The first outlined the responses by Ward and by the total response to each question. About 15 percent of the respondents did not answer or did not know in which Ward they lived, and the total responses and percentages take this into account. The second spreadsheet made comparisons to the 1987, 1996, and 2000 survey results. The results of each question are provided in the actual number of responses and percentage of responses.

The 2006 survey included several open-ended questions that allowed respondents to provide additional comments or to explain further why they responded a particular way. Responses to these questions were categorized into various subjects and by consistent themes. For example, general comments and suggestions were categorized as comments such as water, growth, traffic, City leadership, development, schools, parks, housing, and so forth. Consistent themes were then identified for each subject, such as water quality and stormwater/drainage issues within the water category.

The results of the survey were released in June 2006 to the BOMA, the FMPC and to the public.

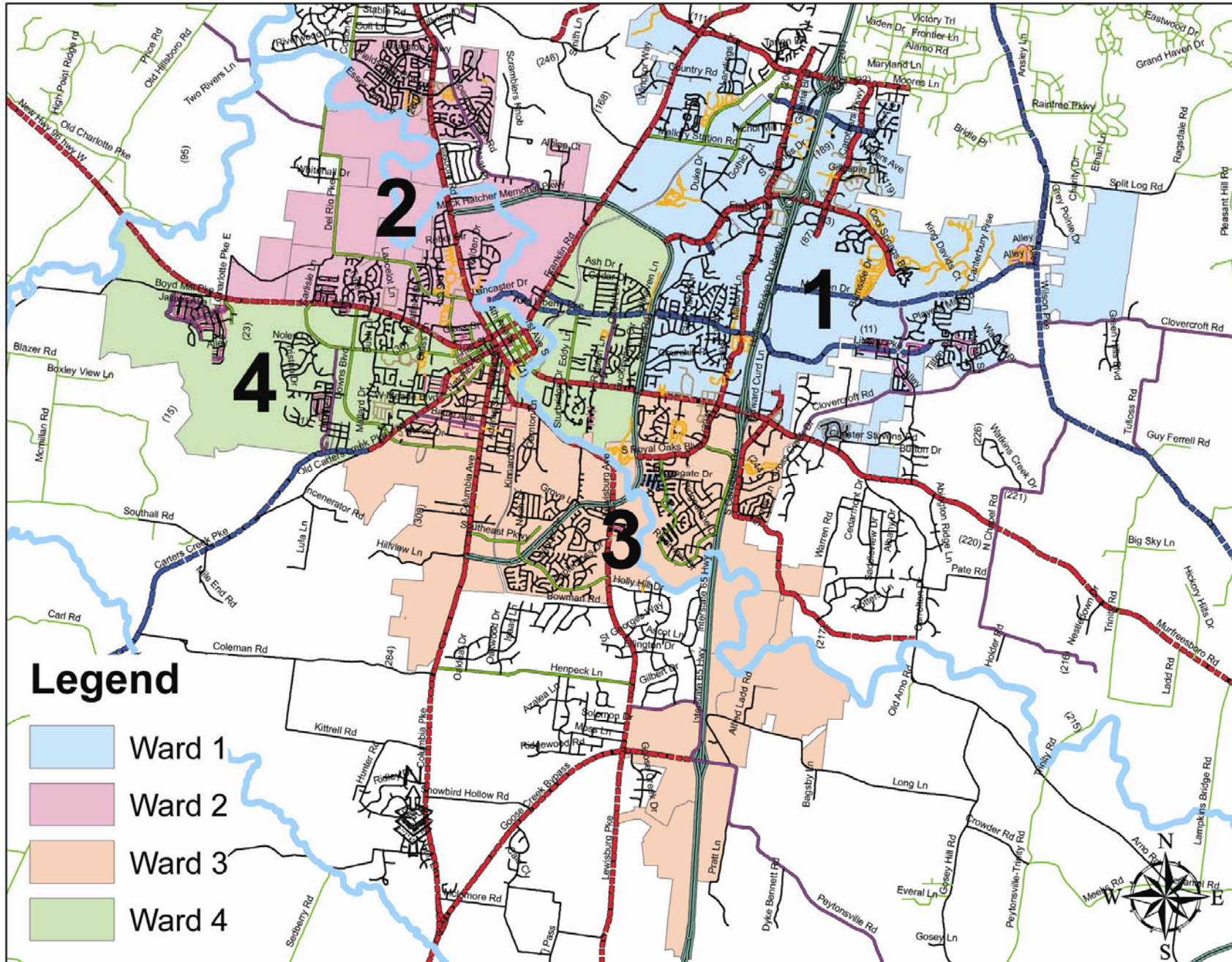
BACKGROUND

Since 1980, the City of Franklin has experienced dramatic increases in population size; the 2000 Census revealed that Franklin's population doubled between 1990 and 2000. The 2006 Special Census brought the population up to almost 50,000. The continuing influx of population has been accompanied by increases in residential and commercial construction, along with the need for water, sewer and street expansion. These changes have placed more demands on the City administration, services and infrastructure and consequently require frequent analysis of existing conditions. The Franklin Household Survey is one way in which the City can gauge its performance on a periodic basis.

The City of Franklin conducted its first Household Survey in 1987 to solicit public opinion about quality-of-life issues facing the community. Since then, a survey has been conducted in 1996, 2000 and, most recently, in 2006. The results of each survey have been used as a mechanism for guiding the BOMA and the FMPC in their planning and growth-management decision-making efforts. In 1987 a total of 6,839 surveys were hand delivered to every household, and 2,834 surveys were returned, for a response rate of 41 percent. The 1996 survey was mailed to 10,643 households and had a return of 3,684 surveys, giving it a return rate of 35 percent. The 2000 survey was mailed to 16,952 households and received a return of 5,092 surveys, or 30 percent. Comparatively, the 2006 survey was mailed to 22,250 households, and 6,572 were returned, for a response rate of 30 percent.

Over the years, the survey has been modified to address certain issues that have moved to the forefront of the City's agenda. The initial survey consisted of 53 questions that addressed City services, City and neighborhood conditions, growth and development, housing costs, transportation, and household demographics. The 1996 survey served as an update to the 1987 survey, and remained primarily the same, with the exception of a few questions added to address opinions on subdivision developments in Franklin and the elimination of questions regarding race, age and employment. The 2000 survey consisted of 80 questions, and it was expanded to include questions related to preferences for specific design characteristics and to include a heavier emphasis on transportation issues. The 2006 Household Survey reached 120 questions due to the inclusion of topics such as a new City Government section, including questions on how citizens receive information and their opinions on the status and direction of the City. New questions also solicited input regarding a potential Citywide recycling program, and additional transportation questions.

City of Franklin Aldermanic Wards as of March 2006



THE 2006 FRANKLIN HOUSEHOLD SURVEY CITYWIDE RESULTS

2006 Special Census Population - 49,412 (yet to be verified by the State)
 Number of Surveys Returned- 6,572

Number of Surveys Mailed - 22,250
 Percentage of Surveys Returned - 30%

GROWTH AND DEVELOPMENT

1. How should the City respond to the pace of development that is occurring?	Ward 1	Ward 2	Ward 3	Ward 4	Total	Percent
The City should not permit any additional development	79	48	132	85	440	7%
The City should limit the amount of additional development	441	408	633	394	2,178	33%
The City should permit development to continue, but should pass additional regulations to better control the quality of development	679	538	825	481	2,885	44%
The City should permit development to continue as is currently being regulated	219	170	259	174	923	14%
The City should permit development to continue without regulation	12	12	18	6	56	1%
No response	10	12	21	9	90	1%
TOTAL	1,440	1,188	1,888	1,149	6,572	100%

*2. Some cities recruit offices, industries, and commercial and retail businesses. What do you think Franklin should do?	Ward 1	Ward 2	Ward 3	Ward 4	Total	Percent
Encourage companies to locate their offices (for example, corporate headquarters, office developments) in Franklin	827	632	1,006	569	3,418	40%
Encourage more commercial businesses to come to Franklin	280	223	319	202	1,147	13%
Encourage only clean, light industries to come to Franklin	528	433	679	433	2,354	27%
Encourage industries of all kinds to come to Franklin	138	108	184	107	632	7%
Do not encourage businesses to come to Franklin	105	91	195	133	617	7%
Don't know/No opinion	74	75	121	85	460	5%
TOTAL	1,952	1,562	2,504	1,529	8,628	100%

3. Would you say the population growth in Franklin during the past five years has been:	Ward 1	Ward 2	Ward 3	Ward 4	Total	Percent
Too fast	868	739	1,249	738	4,182	64%
Just right	544	419	593	377	2,214	34%
Not enough	13	10	17	7	53	1%
No response	15	20	29	27	123	2%
TOTAL	1,440	1,188	1,888	1,149	6,572	100%

GROWTH AND DEVELOPMENT CONTINUED

4. Should Franklin continue to charge fees (for example, impact fees) to new development to cover the cost of providing streets, water, sewer, and other services which will be needed to serve the new development?	Ward 1	Ward 2	Ward 3	Ward 4	Total	Percent
Yes	1,292	1,087	1,713	1,034	5,844	89%
No	57	43	69	56	287	4%
Don't know/No opinion	83	49	99	57	402	6%
No response	8	9	7	2	39	1%
TOTAL	1,440	1,188	1,888	1,149	6,572	100%

5. Would you agree to increasing residential compactness in specific areas in the City if it ensured the permanent preservation of agricultural land and natural open space in other areas of the city and Williamson County?	Ward 1	Ward 2	Ward 3	Ward 4	Total	Percent
Yes	847	699	1,029	645	3,689	56%
No	421	327	609	351	1,915	29%
Don't know/No opinion	160	152	228	147	897	14%
No response	12	10	22	6	71	1%
TOTAL	1,440	1,188	1,888	1,149	6,572	100%

6. Is the City adequately protecting open space?	Ward 1	Ward 2	Ward 3	Ward 4	Total	Percent
Yes	439	408	610	423	2,095	32%
No	575	480	769	473	2,644	40%
Don't know/No opinion	419	292	491	243	1,778	27%
No response	7	8	18	10	55	1%
TOTAL	1,440	1,188	1,888	1,149	6,572	100%

7. Is the City adequately protecting water resources, including streams and rivers?	Ward 1	Ward 2	Ward 3	Ward 4	Total	Percent
Yes	342	269	438	304	1,522	23%
No	440	436	674	391	2,238	34%
Don't know/No opinion	647	292	491	243	2,752	42%
No response	7	8	18	10	60	1%
TOTAL	1,436	1,005	1,621	948	6,572	100%

GROWTH AND DEVELOPMENT CONTINUED

8. Is the City adequately addressing stormwater (drainage) issues?	Ward 1	Ward 2	Ward 3	Ward 4	Total	Percent
Yes	417	279	499	342	1,737	26%
No	316	324	510	281	1,629	25%
Don't know/No opinion	700	576	867	519	3,163	48%
No response	7	9	12	7	43	1%
TOTAL	1,440	1,188	1,888	1,149	6,572	100%

9. Is the City doing an adequate job of protecting its historic properties (for example, the downtown area, historic neighborhoods and historic park properties)?	Ward 1	Ward 2	Ward 3	Ward 4	Total	Percent
Yes	1,113	933	1,485	907	5,116	78%
No	168	143	233	161	798	12%
Don't know/No opinion	140	100	150	68	574	9%
No response	19	12	20	13	84	1%
TOTAL	1,440	1,188	1,888	1,149	6,572	100%

10. Is the City doing an adequate job of promoting its historic properties?	Ward 1	Ward 2	Ward 3	Ward 4	Total	Percent
Yes	882	755	1,209	739	4,149	63%
No	297	251	419	252	1,389	21%
Don't know/No opinion	246	168	241	145	947	14%
No response	15	14	19	13	87	1%
TOTAL	1,440	1,188	1,888	1,149	6,572	100%

11. Rate the general quality of life in Franklin:	Ward 1	Ward 2	Ward 3	Ward 4	Total	Percent
Very satisfied	706	603	858	524	3,058	47%
Satisfied	683	552	934	551	3,173	48%
Dissatisfied	31	17	56	46	191	3%
Very Dissatisfied	7	9	16	14	58	1%
Don't know/No opinion	3	1	8	4	33	1%
No response	10	6	16	10	59	1%
TOTAL	1,440	1,188	1,888	1,149	6,572	100%

NEIGHBORHOOD CONDITIONS (the area within ¼-mile of your home)

12. Street Cleanliness—dirt and litter	Ward 1	Ward 2	Ward 3	Ward 4	Total	Percent
Very satisfied	493	411	602	361	2,122	32%
Satisfied	818	671	1,108	639	3,749	57%
No opinion	28	8	25	24	107	2%
Dissatisfied	81	75	123	95	454	7%
Very Dissatisfied	9	10	15	15	55	1%
No response	11	13	14	15	85	1%
TOTAL	1,440	1,188	1,887	1,149	6,572	100%

13. Street Conditions—potholes, bumps, and pavement	Ward 1	Ward 2	Ward 3	Ward 4	Total	Percent
Very satisfied	308	254	365	206	1,278	19%
Satisfied	913	717	1,160	652	3,933	60%
No opinion	46	26	66	37	223	3%
Dissatisfied	133	162	246	210	925	14%
Very Dissatisfied	22	13	31	30	109	2%
No response	18	16	19	14	104	2%
TOTAL	1,440	1,188	1,887	1,149	6,572	100%

14. Sidewalk Conditions— sidewalks need to be built	Ward 1	Ward 2	Ward 3	Ward 4	Total	Percent
Very satisfied	299	234	313	198	1,186	18%
Satisfied	714	543	846	474	2,972	45%
No opinion	161	111	228	129	757	12%
Dissatisfied	195	198	353	238	1,136	17%
Very Dissatisfied	42	75	100	79	336	5%
No response	29	27	47	31	185	3%
TOTAL	1,440	1,188	1,887	1,149	6,572	100%

15. Sidewalk Conditions—sidewalks need to be repaired	Ward 1	Ward 2	Ward 3	Ward 4	Total	Percent
Very satisfied	284	244	293	197	1,150	17%
Satisfied	729	616	928	546	3,218	49%
No opinion	298	212	431	234	1,375	21%
Dissatisfied	61	75	132	96	444	7%
Very Dissatisfied	15	6	26	24	89	1%
No response	53	35	77	52	296	5%
TOTAL	1,440	1,188	1,887	1,149	6,572	100%

NEIGHBORHOOD CONDITIONS (the area within ¼-mile of your home) CONTINUED

16. Drainage Ditch Capacity—overflow during heavy rains	Ward 1	Ward 2	Ward 3	Ward 4	Total	Percent
Very satisfied	225	185	233	152	892	14%
Satisfied	720	565	930	503	3,084	47%
No opinion	287	227	357	269	1,371	21%
Dissatisfied	166	159	278	153	890	14%
Very Dissatisfied	22	32	59	44	187	3%
No response	20	20	30	28	148	2%
TOTAL	1,440	1,188	1,887	1,149	6,572	100%

*17. What do you like/dislike most about your neighborhood (the area within ¼-mile of your home) and why?	Ward 1	Ward 2	Ward 3	Ward 4	Total	Percent
LIKES						
Proximity to activity centers	262	222	301	181	1,125	27%
Beauty/landscaping/trees	128	122	150	89	569	13%
Clean/well maintained	93	104	153	67	460	11%
Sidewalks	75	70	102	51	438	10%
Quiet/peaceful	79	58	140	68	403	10%
Friendly/sense of community	55	61	129	63	364	9%
Safe/secure/low crime rate	44	64	94	37	307	7%
Low traffic flow	24	14	39	22	154	4%
Schools	5	33	13	9	96	2%
Streets	18	14	11	15	72	2%
Large lots	11	7	21	6	53	1%
Other	30	82	46	7	179	4%
TOTAL	824	851	1,199	615	4,220	100%

NEIGHBORHOOD CONDITIONS (the area within ¼-mile of your home) CONTINUED

*17. CONTINUED. What do you like/dislike most about your neighborhood (the area within ¼-mile of your home) and why?	Ward 1	Ward 2	Ward 3	Ward 4	Total	Percent
DISLIKES						
Traffic/congestion	55	125	326	145	989	27%
Lack of sidewalks/no connectivity	50	84	130	106	467	13%
Cars drive too fast	41	41	68	168	430	12%
Too much noise	32	12	75	28	172	5%
Properties not well maintained	14	20	45	53	150	4%
Too much new development	58	17	36	12	138	4%
Cars parked in street	18	29	38	30	130	4%
Streets in poor condition	10	12	31	40	130	4%
Poor drainage	22	24	38	14	117	3%
Need traffic lights	13	24	16	22	98	3%
Litter	14	28	30	18	90	2%
Unsafe/crime	5	2	6	11	35	1%
Other	55	226	210	125	717	20%
TOTAL	387	644	1,049	772	3,663	100%

18. Does your neighborhood (the area within ¼-mile of your home) have a diverse mix of land uses (residences, shops, workplaces)?	Ward 1	Ward 2	Ward 3	Ward 4	Total	Percent
Yes	1,091	912	1,102	669	4,376	67%
No	316	251	735	445	1,963	30%
Don't know/No opinion	20	13	30	25	148	2%
No response	13	12	20	10	85	1%
TOTAL	1,440	1,188	1,887	1,149	6,572	100%

19. Do you think your neighborhood (the area within ¼-mile of your home) is safe for pedestrians?	Ward 1	Ward 2	Ward 3	Ward 4	Total	Percent
Yes	1,085	850	1,349	725	4,588	70%
No	292	290	437	356	1,595	24%
Don't know/No opinion	30	17	39	30	163	2%
No response	33	31	62	38	226	3%
TOTAL	1,440	1,188	1,887	1,149	6,572	100%

CITYWIDE CONDITIONS

20. Street Cleanliness—dirt and litter	Ward 1	Ward 2	Ward 3	Ward 4	Total	Percent
Very satisfied	324	243	409	259	1,409	21%
Satisfied	979	804	1,235	754	4,317	66%
No opinion	46	28	63	32	221	3%
Dissatisfied	72	89	144	71	460	7%
Very Dissatisfied	3	13	14	13	51	1%
No response	16	11	22	20	114	2%
TOTAL	1,440	1,188	1,887	1,149	6,572	100%

21. Street Conditions—potholes, bumps, and pavement	Ward 1	Ward 2	Ward 3	Ward 4	Total	Percent
Very satisfied	184	125	224	132	764	12%
Satisfied	976	764	1,230	714	4,203	64%
No opinion	73	66	97	60	362	6%
Dissatisfied	173	197	284	205	1,025	16%
Very Dissatisfied	14	22	29	20	94	1%
No response	20	14	23	18	124	2%
TOTAL	1,440	1,188	1,887	1,149	6,572	100%

22. Sidewalk Conditions—sidewalks need to be built	Ward 1	Ward 2	Ward 3	Ward 4	Total	Percent
Very satisfied	146	104	183	115	643	10%
Satisfied	769	595	909	528	3,224	49%
No opinion	256	177	331	183	1,106	17%
Dissatisfied	200	241	344	231	1,151	18%
Very Dissatisfied	29	42	74	57	237	4%
No response	40	29	46	35	211	3%
TOTAL	1,440	1,188	1,887	1,149	6,572	100%

CITYWIDE CONDITIONS CONTINUED

23. Sidewalk Conditions—sidewalks need to be repaired	Ward 1	Ward 2	Ward 3	Ward 4	Total	Percent
Very satisfied	156	120	178	126	682	10%
Satisfied	783	643	1,007	597	3,445	52%
No opinion	364	271	469	263	1,589	24%
Dissatisfied	94	105	156	109	543	8%
Very Dissatisfied	4	13	22	19	69	1%
No response	39	36	55	35	244	4%
TOTAL	1,440	1,188	1,887	1,149	6,572	100%

24. Drainage Ditch Capacity— overflow during heavy rains	Ward 1	Ward 2	Ward 3	Ward 4	Total	Percent
Very satisfied	135	90	160	100	572	9%
Satisfied	683	553	844	517	2,956	45%
No opinion	429	354	535	328	1,900	29%
Dissatisfied	153	148	275	151	858	13%
Very Dissatisfied	11	19	39	27	115	2%
No response	29	24	34	26	171	3%
TOTAL	1,440	1,188	1,887	1,149	6,572	100%

CITY SERVICES

25. Wastewater Service	Ward 1	Ward 2	Ward 3	Ward 4	Total	Percent
Very satisfied	216	209	290	188	1,028	16%
Satisfied	815	657	1,114	663	3,682	56%
No opinion	317	235	356	218	1,370	21%
Dissatisfied	50	51	74	42	253	4%
Very Dissatisfied	8	13	11	6	46	1%
No response	34	23	42	32	193	3%
TOTAL	1,440	1,188	1,887	1,149	6,572	100%

26. Water Service— including water quality and pressure	Ward 1	Ward 2	Ward 3	Ward 4	Total	Percent
Very satisfied	269	220	319	198	1,148	17%
Satisfied	838	714	1,078	689	3,835	58%
No opinion	92	51	88	50	343	5%
Dissatisfied	179	161	314	166	934	14%
Very Dissatisfied	38	34	59	31	188	3%
No response	24	8	29	15	124	2%
TOTAL	1,440	1,188	1,887	1,149	6,572	100%

CITY SERVICES CONTINUED

27. Stormwater Management Services (Drainage)	Ward 1	Ward 2	Ward 3	Ward 4	Total	Percent
Very satisfied	189	151	215	135	782	12%
Satisfied	725	605	914	559	3,196	49%
No opinion	328	246	419	263	1,487	23%
Dissatisfied	149	145	263	143	811	12%
Very Dissatisfied	17	16	33	21	108	2%
No response	32	25	43	28	188	3%
TOTAL	1,440	1,188	1,887	1,149	6,572	100%

28. Household Garbage Collection	Ward 1	Ward 2	Ward 3	Ward 4	Total	Percent
Very satisfied	503	460	710	436	2,397	36%
Satisfied	764	636	1,020	640	3,548	54%
No opinion	111	35	57	24	284	4%
Dissatisfied	28	40	62	33	191	3%
Very Dissatisfied	11	5	12	3	38	1%
No response	23	12	26	13	114	2%
TOTAL	1,440	1,188	1,887	1,149	6,572	100%

29. Excess Trash/Bulk Pick-up	Ward 1	Ward 2	Ward 3	Ward 4	Total	Percent
Very satisfied	448	446	650	389	2,173	33%
Satisfied	665	581	946	583	3,211	49%
No opinion	234	93	167	93	712	11%
Dissatisfied	59	46	91	54	299	5%
Very Dissatisfied	10	8	12	13	53	1%
No response	24	14	21	17	124	2%
TOTAL	1,440	1,188	1,887	1,149	6,572	100%

30. Limb and Leaf Service	Ward 1	Ward 2	Ward 3	Ward 4	Total	Percent
Very satisfied	330	356	549	324	1,756	27%
Satisfied	612	541	896	531	2,984	45%
No opinion	393	216	303	200	1,320	20%
Dissatisfied	63	54	99	59	329	5%
Very Dissatisfied	10	7	13	15	52	1%
No response	32	14	27	20	131	2%
TOTAL	1,440	1,188	1,887	1,149	6,572	100%

CITY SERVICES CONTINUED

31. Fire Protection	Ward 1	Ward 2	Ward 3	Ward 4	Total	Percent
Very satisfied	487	469	650	425	2,321	35%
Satisfied	729	609	1,012	608	3,425	52%
No opinion	183	95	199	98	680	10%
Dissatisfied	18	2	8	4	40	1%
Very Dissatisfied	4	2	0	3	12	0%
No response	19	11	18	11	94	1%
TOTAL	1,440	1,188	1,887	1,149	6,572	100%

32. Police Protection	Ward 1	Ward 2	Ward 3	Ward 4	Total	Percent
Very satisfied	501	450	649	440	2,343	36%
Satisfied	766	635	1,026	590	3,469	53%
No opinion	104	66	122	66	438	7%
Dissatisfied	42	20	55	27	172	3%
Very Dissatisfied	7	4	9	10	40	1%
No response	20	13	26	16	110	2%
TOTAL	1,440	1,188	1,887	1,149	6,572	100%

33. Codes Enforcement	Ward 1	Ward 2	Ward 3	Ward 4	Total	Percent
Very satisfied	255	216	322	207	1,161	18%
Satisfied	642	550	897	532	2,983	45%
No opinion	358	285	440	257	1,589	24%
Dissatisfied	117	95	155	100	530	8%
Very Dissatisfied	33	25	42	34	151	2%
No response	35	17	31	19	158	2%
TOTAL	1,440	1,188	1,887	1,149	6,572	100%

34. Do you currently recycle glass, aluminum, or paper?	Ward 1	Ward 2	Ward 3	Ward 4	Total	Percent
Yes	512	523	740	488	2,560	39%
No	904	650	1,117	637	3,871	59%
Don't know/No opinion	9	7	14	17	72	1%
No response	15	8	16	7	69	1%
TOTAL	1,440	1,188	1,887	1,149	6,572	100%

CITY SERVICES CONTINUED

35. Do you want the City to implement a citywide curb-side recycling program?	Ward 1	Ward 2	Ward 3	Ward 4	Total	Percent
Yes	883	765	1,165	679	3,994	61%
No	311	232	416	273	1,425	22%
Don't know/No opinion	236	180	294	189	1,086	17%
No response	10	11	12	8	67	1%
TOTAL	1,440	1,188	1,887	1,149	6,572	100%

36. If the City were to implement a curb-side recycling program, how likely would you be to participate?	Ward 1	Ward 2	Ward 3	Ward 4	Total	Percent
Not very likely	246	169	298	176	1,058	16%
Somewhat likely	217	179	290	194	1,045	16%
Likely	243	198	355	211	1,177	18%
Very likely	723	634	926	564	3,205	49%
No response	11	8	18	4	87	1%
TOTAL	1,440	1,188	1,887	1,149	6,572	100%

37. Would you be willing to pay a minimum fee of \$10 a month to fund a curb-side recycling program?	Ward 1	Ward 2	Ward 3	Ward 4	Total	Percent
Yes	365	301	476	263	1,588	24%
No	929	773	1,254	785	4,341	66%
Don't know/No opinion	121	95	134	89	526	8%
No response	25	19	23	12	117	2%
TOTAL	1,440	1,188	1,887	1,149	6,572	100%

CITYWIDE COMMUNITY FACILITIES

38. Availability of park facilities for children under 13	Ward 1	Ward 2	Ward 3	Ward 4	Total	Percent
Very satisfied	335	396	458	376	1,787	27%
Satisfied	586	542	866	520	2,856	43%
Don't know/No opinion	377	201	405	194	1,428	22%
Dissatisfied	102	39	116	43	340	5%
Very Dissatisfied	17	1	14	3	41	1%
No response	23	9	28	13	120	2%
TOTAL	1,440	1,188	1,887	1,149	6,572	100%

CITYWIDE COMMUNITY FACILITIES CONTINUED

39. Availability of park facilities for teenagers	Ward 1	Ward 2	Ward 3	Ward 4	Total	Percent
Very satisfied	163	172	211	197	859	13%
Satisfied	403	371	560	406	1,994	30%
Don't know/No opinion	663	476	833	416	2,769	42%
Dissatisfied	166	143	221	99	725	11%
Very Dissatisfied	21	8	25	13	79	1%
No response	24	18	37	18	146	2%
TOTAL	1,440	1,188	1,887	1,149	6,572	100%

40. Availability of park facilities for adults ages 20 and older	Ward 1	Ward 2	Ward 3	Ward 4	Total	Percent
Very satisfied	240	267	309	264	1,232	19%
Satisfied	653	575	889	578	3,067	47%
Don't know/No opinion	368	228	441	203	1,499	23%
Dissatisfied	134	95	191	72	551	8%
Very Dissatisfied	21	8	25	15	79	1%
No response	24	15	32	17	144	2%
TOTAL	1,440	1,188	1,887	1,149	6,572	100%

41. Availability of day-care facilities	Ward 1	Ward 2	Ward 3	Ward 4	Total	Percent
Very satisfied	93	105	126	73	462	7%
Satisfied	254	225	333	196	1,171	18%
Don't know/No opinion	1,002	781	1,319	794	4,476	68%
Dissatisfied	55	49	65	50	256	4%
Very Dissatisfied	9	8	10	9	39	1%
No response	27	20	34	27	168	3%
TOTAL	1,440	1,188	1,887	1,149	6,572	100%

CITYWIDE COMMUNITY FACILITIES CONTINUED

*42. What recreational facilities do you or your family use in Franklin's parks?	Ward 1	Ward 2	Ward 3	Ward 4	Total	Percent
Athletic Fields	368	430	559	328	1,709	14%
Basketball Courts	120	163	164	111	558	5%
Exercise Trails	795	788	1,039	728	3,444	28%
Picnic Shelters	480	410	651	413	1,954	16%
Playground Equipment	517	527	774	466	2,284	19%
Tennis Courts	180	189	249	192	810	7%
Other (specify _____)	121	87	137	84	429	4%
<i>Williamson County Recreation Center</i>					114	
<i>Bike trails/sidewalks</i>					94	
<i>Dog park</i>					73	
<i>Open space/Harpeth River</i>					56	
<i>Swimming pools</i>					25	
<i>Public golf course</i>					17	
<i>YMCA</i>					15	
<i>Other</i>					35	
None	306	166	360	175	1,007	8%
TOTAL	2,887	2,760	3,933	2,497	12,195	100%

*43. What other community facilities would you like to have in Franklin? (e.g. parks, cultural facilities, community recreation center, museums, performing arts center, zoological garden, etc.)	Ward 1	Ward 2	Ward 3	Ward 4	Total	Percent
Performing arts centers/amphitheater	298	114	307	298	1,069	21%
Parks/open space/river park	188	72	267	118	701	14%
Community recreation center	113	31	150	94	412	8%
Museum	202	76	226	153	665	13%
Gardens (zoological or botanical)	242	91	276	172	800	16%
Trails/walking, biking, hiking or nature	108	40	117	78	352	7%
Cultural facilities	90	26	116	62	307	6%
Public golf course	47	15	78	33	189	4%
Athletics/tennis courts, pool, basketball courts, ball fields, golf courses	27	11	46	11	110	2%
Other	65	27	78	42	221	4%
None	43	25	81	53	214	4%
TOTAL	1,423	528	1,742	1,114	5,040	100%

CITY GOVERNMENT

44. In which Aldermanic Ward do you live?	Ward 1	Ward 2	Ward 3	Ward 4	Total	Percent
Response	1,440	1,188	1,887	1,149	5,664	86%
Don't know					538	8%
No response					370	6%
TOTAL					6,572	100%

*45. How do you receive information about local government?	Ward 1	Ward 2	Ward 3	Ward 4	Total	Percent
Newspaper	1,243	1,030	1,652	995	5,629	37%
Cable TV Channel 10 on Comcast	472	412	615	405	2,217	14%
City web site	179	148	213	160	741	5%
Public meeting attendance	118	79	105	131	476	3%
Homeowners association newsletter	450	395	479	289	1,802	12%
Local radio	243	201	342	238	1,193	8%
Word of mouth	648	577	887	567	3,040	20%
Other (specify _____)	84	45	70	80	318	2%
<i>TV/local news/channel 3</i>					101	
<i>Internet/blogs/Aldermen web sites</i>					66	
<i>Flyers/mailings/magazines</i>					30	
<i>E-mail/Aldermen</i>					42	
<i>Group involvement</i>					17	
<i>Do not receive information</i>					14	
<i>Other</i>					48	
TOTAL	3,437	2,887	4,363	2,865	15,416	100%

46. How often do you visit the City of Franklin website (www.franklin-gov.com)?	Ward 1	Ward 2	Ward 3	Ward 4	Total	Percent
Never	645	506	854	491	3,062	47%
Rarely	452	409	584	348	1,986	30%
Sometimes	280	227	368	242	1,204	18%
Frequently	48	33	58	50	204	3%
Very frequently	5	4	9	8	32	0%
No response	10	9	14	10	84	1%
TOTAL	1,440	1,188	1,887	1,149	6,572	100%

CITY GOVERNMENT CONTINUED

*47. Which sections do you frequently view?	Ward 1	Ward 2	Ward 3	Ward 4	Total	Percent
Information	414	336	514	360	1,788	29%
Departments	254	208	301	195	1,031	17%
Services	207	166	226	163	835	13%
Property Taxes	119	80	126	69	450	7%
Traffic	109	68	134	83	447	7%
Calendar of events	322	291	424	283	1,470	24%
Other (specify _____)	43	30	67	40	213	3%
<i>None</i>					48	
<i>Meeting minutes/agendas</i>					32	
<i>Employment</i>					29	
<i>Other links</i>					28	
<i>Survey/census</i>					11	
<i>Other</i>					65	
TOTAL	1,468	1,179	1,792	1,193	6,234	100%

48. Would you like to see any improvements made or additional information added to the website?	Ward 1	Ward 2	Ward 3	Ward 4	Total	Percent
Yes (specify _____)	81	56	76	60	295	6%
<i>Calendar/schedule of events</i>					25	
<i>Public meeting information/updates</i>					18	
<i>Need for updated information</i>					15	
<i>Maps/zoning, GIS, trolley, city</i>					14	
<i>More user friendly</i>					13	
<i>Pay bills online/without charge</i>					12	
<i>Development/planning calendar information</i>					11	
<i>Police information/tickets, arrests, seminars</i>					10	
<i>Traffic issues/status</i>					10	
<i>Better website layout/promotion</i>					10	
<i>Community links/yard sales, tourist information, seniors</i>					10	
<i>Access to public records</i>					10	
<i>Other</i>					137	
No	155	118	243	132	721	13%
Don't know/No opinion	947	804	1,245	742	4,331	81%
TOTAL					5,347	100%

CITY GOVERNMENT CONTINUED

49. How often do you watch City's TV channel, Comcast Cable Channel 10?	Ward 1	Ward 2	Ward 3	Ward 4	Total	Percent
I do not have Comcast Cable	172	144	232	151	810	12%
Never	367	282	465	252	1,582	24%
Rarely	445	386	529	317	1,922	29%
Sometimes	354	289	526	308	1,697	26%
Frequently	72	65	106	89	388	6%
Very frequently	12	12	19	17	87	1%
No response	18	10	10	15	86	1%
TOTAL	1,440	1,188	1,887	1,149	6,572	100%

*50. Which programs have you watched?	Ward 1	Ward 2	Ward 3	Ward 4	Total	Percent
Public meetings	570	484	812	530	2,725	36%
Cultural arts	164	161	215	145	783	10%
Interviews	163	147	236	116	767	10%
Perils for Pedestrians	18	22	33	15	98	1%
TraffiCast	262	189	383	172	1,136	15%
Information Billboard slide show	176	175	251	132	801	11%
Army Newswatch	20	19	44	21	135	2%
Education News	208	178	277	153	968	13%
Other (specify program subjects or show titles _____)	24	27	45	26	147	2%
<i>Don't watch/don't have cable</i>					50	
<i>School/programs/board meetings/closings/sports</i>					36	
<i>Events/local/historical/social/parades</i>					19	
<i>Special meetings/lectures/debates</i>					11	
<i>Other</i>					31	
TOTAL	1,605	1,402	2,296	1,310	7,560	100%

CITY GOVERNMENT CONTINUED

51. Would you like to see any additional programming added to Cable Channel 10?	Ward 1	Ward 2	Ward 3	Ward 4	Total	Percent
Yes (specify _____)	71	52	110	70	345	5%
<i>Franklin shows/events/highlights</i>					61	
<i>School programs/closings/events/information</i>					42	
<i>Public meetings/committees/debates/voting information</i>					36	
<i>Local news/weather</i>					31	
<i>Cultural arts</i>					25	
<i>Local sports/high school</i>					23	
<i>Citizen-developed programs</i>					22	
<i>Improvements to appearance/style/background music</i>					21	
<i>Long-term planning/issues/zoning</i>					20	
<i>Local business information/interviews</i>					14	
<i>Health/wellness/exercise</i>					12	
<i>Public safety/police/fire</i>					11	
<i>Other</i>					27	
No	183	148	257	149	842	13%
Don't know/No opinion	942	784	1,195	721	4,218	64%
No response	244	204	325	209	1,167	18%
TOTAL	1,440	1,188	1,887	1,149	6,572	100%

52. The overall direction of the City is on the right track.	Ward 1	Ward 2	Ward 3	Ward 4	Total	Percent
Strongly agree	240	176	234	168	921	14%
Agree somewhat	798	692	1,006	595	3,494	53%
Neither agree nor disagree	153	114	246	131	806	12%
Disagree somewhat	168	142	263	169	858	13%
Strongly disagree	45	40	85	59	278	4%
No response	36	24	53	27	215	3%
TOTAL	1,440	1,188	1,887	1,149	6,572	100%

53. The City does a good job of keeping citizens informed about City issues.	Ward 1	Ward 2	Ward 3	Ward 4	Total	Percent
Strongly agree	135	113	167	132	643	10%
Agree somewhat	645	597	797	484	2,854	43%
Neither agree nor disagree	382	265	510	279	1,670	25%
Disagree somewhat	199	155	294	167	941	14%
Strongly disagree	46	40	75	57	260	4%
No response	33	18	44	30	204	3%
TOTAL	1,440	1,188	1,887	1,149	6,572	100%

CITY GOVERNMENT CONTINUED

54. The Board of Mayor and Aldermen is responsive to the needs of citizens.	Ward 1	Ward 2	Ward 3	Ward 4	Total	Percent
Strongly agree	93	89	116	83	452	7%
Agree somewhat	463	414	574	379	2,075	32%
Neither agree nor disagree	630	490	785	422	2,693	41%
Disagree somewhat	166	124	252	153	789	12%
Strongly disagree	57	48	109	78	344	5%
No response	31	23	51	34	219	3%
TOTAL	1,440	1,188	1,887	1,149	6,572	100%

55. The Board of Mayor and Aldermen effectively represents the attitudes and opinions of the residents of Franklin.	Ward 1	Ward 2	Ward 3	Ward 4	Total	Percent
Strongly agree	76	69	94	54	350	5%
Agree somewhat	408	396	517	331	1,884	29%
Neither agree nor disagree	637	459	750	421	2,619	40%
Disagree somewhat	214	176	320	214	1,030	16%
Strongly disagree	73	62	153	98	462	7%
No response	32	26	53	31	227	3%
TOTAL	1,440	1,188	1,887	1,149	6,572	100%

56. The City employees are responsive to citizen concerns.	Ward 1	Ward 2	Ward 3	Ward 4	Total	Percent
Strongly agree	144	138	226	166	775	12%
Agree somewhat	597	519	797	510	2,725	41%
Neither agree nor disagree	549	410	645	351	2,289	35%
Disagree somewhat	91	71	131	63	419	6%
Strongly disagree	23	25	29	26	129	2%
No response	36	25	59	33	235	4%
TOTAL	1,440	1,188	1,887	1,149	6,572	100%

57. The City does a good job in managing its finances.	Ward 1	Ward 2	Ward 3	Ward 4	Total	Percent
Strongly agree	110	98	141	93	508	8%
Agree somewhat	478	426	607	363	2,117	32%
Neither agree nor disagree	660	508	792	481	2,836	43%
Disagree somewhat	107	83	194	124	580	9%
Strongly disagree	48	46	99	56	299	5%
No response	37	27	54	32	232	4%
TOTAL	1,440	1,188	1,887	1,149	6,572	100%

CITY GOVERNMENT CONTINUED

58. The City is making good progress in improving city streets.	Ward 1	Ward 2	Ward 3	Ward 4	Total	Percent
Strongly agree	131	109	143	120	581	9%
Agree somewhat	751	569	852	567	3,119	47%
Neither agree nor disagree	317	263	402	210	1,404	21%
Disagree somewhat	155	164	326	167	925	14%
Strongly disagree	57	57	116	56	331	5%
No response	29	26	48	29	212	3%
TOTAL	1,440	1,188	1,887	1,149	6,572	100%

59. The City should work towards building around town centers where people live close to places of work, shopping, and play.	Ward 1	Ward 2	Ward 3	Ward 4	Total	Percent
Strongly agree	272	254	302	216	1,193	18%
Agree somewhat	568	426	698	417	2,392	36%
Neither agree nor disagree	383	333	535	314	1,822	28%
Disagree somewhat	127	109	208	107	625	10%
Strongly disagree	57	41	85	68	309	5%
No response	33	25	59	27	231	4%
TOTAL	1,440	1,188	1,887	1,149	6,572	100%

60. The City should encourage a mix of housing styles to serve changing preferences.	Ward 1	Ward 2	Ward 3	Ward 4	Total	Percent
Strongly agree	385	314	400	271	1,553	24%
Agree somewhat	560	463	743	442	2,510	38%
Neither agree nor disagree	252	204	342	200	1,187	18%
Disagree somewhat	136	136	231	144	741	11%
Strongly disagree	75	53	112	61	361	5%
No response	32	18	59	31	220	3%
TOTAL	1,440	1,188	1,887	1,149	6,572	100%

61. Police visibility and responsiveness to the residential community is good.	Ward 1	Ward 2	Ward 3	Ward 4	Total	Percent
Strongly agree	565	475	717	491	2,554	39%
Agree somewhat	637	538	846	457	2,815	43%
Neither agree nor disagree	130	86	161	95	583	9%
Disagree somewhat	61	53	77	54	291	4%
Strongly disagree	23	22	44	32	151	2%
No response	24	14	42	20	178	3%
TOTAL	1,440	1,188	1,887	1,149	6,572	100%

CITY GOVERNMENT CONTINUED

62. The enforcement of traffic laws in the City is adequate.	Ward 1	Ward 2	Ward 3	Ward 4	Total	Percent
Strongly agree	376	359	497	348	1,819	28%
Agree somewhat	686	547	870	514	2,966	45%
Neither agree nor disagree	186	116	212	110	765	12%
Disagree somewhat	119	98	174	102	552	8%
Strongly disagree	48	51	90	56	290	4%
No response	25	17	44	19	180	3%
TOTAL	1,440	1,188	1,887	1,149	6,572	100%

63. Schools should be built in and around residential neighborhoods.	Ward 1	Ward 2	Ward 3	Ward 4	Total	Percent
Strongly agree	598	561	785	498	2,744	42%
Agree somewhat	482	392	637	376	2,142	33%
Neither agree nor disagree	237	137	290	170	1,012	15%
Disagree somewhat	61	41	86	52	289	4%
Strongly disagree	37	43	50	30	209	3%
No response	25	14	39	23	176	3%
TOTAL	1,440	1,188	1,887	1,149	6,572	100%

PROXIMITY TO ACTIVITY CENTERS

64. How close do you live to a grocery store?	Ward 1	Ward 2	Ward 3	Ward 4	Total	Percent
I can walk	239	422	191	97	1,131	17%
Less than 1/4 mile	140	172	216	82	721	11%
1/4 - 1/2 mile	290	212	386	137	1,190	18%
1/2 - 1 mile	428	214	594	334	1,768	27%
More than 1 mile	334	156	488	493	1,689	26%
No response	9	12	12	6	73	1%
TOTAL	1,440	1,188	1,887	1,149	6,572	100%

PROXIMITY TO ACTIVITY CENTERS CONTINUED

65. How close to a grocery store would you like to live?	Ward 1	Ward 2	Ward 3	Ward 4	Total	Percent
I can walk	189	286	157	155	937	14%
Less than 1/4 mile	152	193	241	128	837	13%
1/4 -1/2 mile	322	256	419	169	1,355	21%
1/2 - 1 mile	424	280	619	374	1,886	29%
More than 1 mile	291	106	387	276	1,217	19%
No response	62	67	64	47	340	5%
TOTAL	1,440	1,188	1,887	1,149	6,572	100%

66. How close do you live to restaurants or entertainment?	Ward 1	Ward 2	Ward 3	Ward 4	Total	Percent
I can walk	151	286	152	115	815	12%
Less than 1/4 mile	128	161	147	60	587	9%
1/4 -1/2 mile	235	206	327	165	1,090	17%
1/2 - 1 mile	439	232	568	280	1,716	26%
More than 1 mile	474	288	672	515	2,251	34%
No response	13	15	21	14	113	2%
TOTAL	1,440	1,188	1,887	1,149	6,572	100%

67. How close to restaurants or entertainment would you like to live?	Ward 1	Ward 2	Ward 3	Ward 4	Total	Percent
I can walk	140	195	115	136	687	10%
Less than 1/4 mile	125	167	161	80	626	10%
1/4 -1/2 mile	235	213	322	180	1,094	17%
1/2 - 1 mile	434	282	598	305	1,837	28%
More than 1 mile	453	271	626	399	2,000	30%
No response	53	60	65	49	328	5%
TOTAL	1,440	1,188	1,887	1,149	6,572	100%

68. How close do you live to other shopping?	Ward 1	Ward 2	Ward 3	Ward 4	Total	Percent
I can walk	109	107	118	68	465	7%
Less than 1/4 mile	110	55	86	45	347	5%
1/4 -1/2 mile	200	131	203	97	725	11%
1/2 - 1 mile	413	175	469	282	1,529	23%
More than 1 mile	592	707	983	641	3,385	52%
No response	16	13	28	16	121	2%
TOTAL	1,440	1,188	1,887	1,149	6,572	100%

PROXIMITY TO ACTIVITY CENTERS CONTINUED

69. How close to other shopping would you like to live?	Ward 1	Ward 2	Ward 3	Ward 4	Total	Percent
I can walk	84	85	90	98	422	6%
Less than 1/4 mile	100	72	103	61	397	6%
1/4 -1/2 mile	200	135	207	134	772	12%
1/2 - 1 mile	384	244	505	279	1,589	24%
More than 1 mile	616	595	912	518	3,050	46%
No response	56	57	70	59	342	5%
TOTAL	1,440	1,188	1,887	1,149	6,572	100%

70. How close do you live to a park?	Ward 1	Ward 2	Ward 3	Ward 4	Total	Percent
I can walk	94	401	126	324	1,097	17%
Less than 1/4 mile	69	110	82	105	433	7%
1/4 -1/2 mile	130	202	167	210	805	12%
1/2 - 1 mile	228	223	315	268	1,177	18%
More than 1 mile	893	236	1,173	225	2,910	44%
No response	26	16	24	17	150	2%
TOTAL	1,440	1,188	1,887	1,149	6,572	100%

71. How close to a park would you like to live?	Ward 1	Ward 2	Ward 3	Ward 4	Total	Percent
I can walk	285	421	311	374	1,582	24%
Less than 1/4 mile	143	134	181	131	695	11%
1/4 -1/2 mile	217	208	290	206	1,040	16%
1/2 - 1 mile	369	231	491	260	1,522	23%
More than 1 mile	377	129	542	132	1,393	21%
No response	49	65	72	46	340	5%
TOTAL	1,440	1,188	1,887	1,149	6,572	100%

DESIGN PREFERENCES

72. Cul-de-sacs	Ward 1	Ward 2	Ward 3	Ward 4	Total	Percent
Like	1,155	957	1,490	807	4,986	76%
Dislike	92	94	143	122	523	8%
Don't know/No opinion	169	116	216	187	869	13%
No response	24	21	38	33	194	3%
TOTAL	1,440	1,188	1,887	1,149	6,572	100%

73. Developments with mixed housing types, shops, and offices	Ward 1	Ward 2	Ward 3	Ward 4	Total	Percent
Like	872	742	1,007	652	3,698	56%
Dislike	345	263	521	291	1,644	25%
Don't know/No opinion	192	153	318	171	1,016	15%
No response	31	30	41	35	214	3%
TOTAL	1,440	1,188	1,887	1,149	6,572	100%

74. Front-loading garages	Ward 1	Ward 2	Ward 3	Ward 4	Total	Percent
Like	273	270	394	228	1,341	20%
Dislike	860	658	1,067	636	3,700	56%
Don't know/No opinion	287	243	397	261	1,390	21%
No response	20	17	29	24	141	2%
TOTAL	1,440	1,188	1,887	1,149	6,572	100%

75. Front porches	Ward 1	Ward 2	Ward 3	Ward 4	Total	Percent
Like	1,297	1,083	1,711	1,050	5,907	90%
Dislike	39	26	40	20	152	2%
Don't know/No opinion	90	63	111	59	389	6%
No response	14	16	25	20	124	2%
TOTAL	1,440	1,188	1,887	1,149	6,572	100%

DESIGN PREFERENCES CONTINUED

76. Small lot sizes (4,000 to 9,000 square feet or 0.1 to 0.2 acre)	Ward 1	Ward 2	Ward 3	Ward 4	Total	Percent
Like	304	265	365	307	1,475	22%
Dislike	927	724	1,223	619	3,882	59%
Don't know/No opinion	179	158	259	181	980	15%
No response	30	41	40	42	235	4%
TOTAL	1,440	1,188	1,887	1,149	6,572	100%

77. Medium lot sizes (10,000 to 19,999 square feet or 0.23 to 0.46 acre)	Ward 1	Ward 2	Ward 3	Ward 4	Total	Percent
Like	975	799	1,290	795	4,355	66%
Dislike	255	180	323	159	1,045	16%
Don't know/No opinion	183	173	219	157	934	14%
No response	27	36	55	38	238	4%
TOTAL	1,440	1,188	1,887	1,149	6,572	100%

78. Large lot sizes (20,000 square feet or greater or 0.46 acre or greater)	Ward 1	Ward 2	Ward 3	Ward 4	Total	Percent
Like	1,032	849	1,361	746	4,488	68%
Dislike	154	126	180	147	700	11%
Don't know/No opinion	222	177	283	215	1,121	17%
No response	32	36	63	41	263	4%
TOTAL	1,440	1,188	1,887	1,149	6,572	100%

79. Rear-entry garages	Ward 1	Ward 2	Ward 3	Ward 4	Total	Percent
Like	1,112	890	1,430	863	4,930	75%
Dislike	109	100	157	90	534	8%
Don't know/No opinion	203	179	270	171	965	15%
No response	16	19	30	25	143	2%
TOTAL	1,440	1,188	1,887	1,149	6,572	100%

DESIGN PREFERENCES CONTINUED

80. On-street parking	Ward 1	Ward 2	Ward 3	Ward 4	Total	Percent
Like	264	209	302	227	1,133	17%
Dislike	1,041	857	1,399	776	4,657	71%
Don't know/No opinion	114	104	153	117	622	9%
No response	21	18	33	29	160	2%
TOTAL	1,440	1,188	1,887	1,149	6,572	100%

81. Single-family developments	Ward 1	Ward 2	Ward 3	Ward 4	Total	Percent
Like	1,281	1,062	1,684	1,008	5,750	87%
Dislike	33	40	42	23	167	3%
Don't know/No opinion	105	67	130	88	495	8%
No response	21	19	31	30	160	2%
TOTAL	1,440	1,188	1,887	1,149	6,572	100%

82. Street connectivity	Ward 1	Ward 2	Ward 3	Ward 4	Total	Percent
Like	1,034	882	1,330	795	4,597	70%
Dislike	141	102	181	112	606	9%
Don't know/No opinion	227	168	325	193	1,119	17%
No response	38	36	51	49	250	4%
TOTAL	1,440	1,188	1,887	1,149	6,572	100%

83. Smaller residential lots clustered around open spaces and parks	Ward 1	Ward 2	Ward 3	Ward 4	Total	Percent
Like	878	706	1,044	711	3,804	58%
Dislike	285	264	450	219	1,400	21%
Don't know/No opinion	248	197	358	186	1,173	18%
No response	29	21	35	33	195	3%
TOTAL	1,440	1,188	1,887	1,149	6,572	100%

DESIGN PREFERENCES CONTINUED

84. Alleys/rear-service drives	Ward 1	Ward 2	Ward 3	Ward 4	Total	Percent
Like	647	451	748	553	2,726	41%
Dislike	506	462	751	333	2,357	36%
Don't know/No opinion	261	252	349	225	1,296	20%
No response	26	23	39	38	193	3%
TOTAL	1,440	1,188	1,887	1,149	6,572	100%

85. Bicycle facilities—Shared on street (bike lanes or wide outside lanes)	Ward 1	Ward 2	Ward 3	Ward 4	Total	Percent
Like	847	698	1,002	640	3,631	55%
Dislike	393	355	595	334	1,933	29%
Don't know/No opinion	172	120	258	144	841	13%
No response	28	15	32	31	167	3%
TOTAL	1,440	1,188	1,887	1,149	6,572	100%

86. Bicycle facilities—shared off street (along streets but separated on bike paths)	Ward 1	Ward 2	Ward 3	Ward 4	Total	Percent
Like	1,125	960	1,424	856	4,965	76%
Dislike	95	79	159	98	504	8%
Don't know/No opinion	190	123	267	164	913	14%
No response	30	26	37	31	190	3%
TOTAL	1,440	1,188	1,887	1,149	6,572	100%

*87. Which do you think the City should give more importance to when evaluating new subdivision developments?	Ward 1	Ward 2	Ward 3	Ward 4	Total	Percent
Design	165	118	208	116	692	9%
Density	217	186	270	168	944	13%
Location	135	123	203	121	673	9%
All three	1,115	912	1,428	867	4,943	66%
Don't know/No opinion	26	20	57	37	220	3%
TOTAL	1,658	1,359	2,166	1,309	7,472	100%

DESIGN PREFERENCES CONTINUED

88. Cool Springs/Galleria	Ward 1	Ward 2	Ward 3	Ward 4	Total	Percent
Like	1,256	1,017	1,568	936	5,503	84%
Dislike	107	113	184	126	615	9%
Don't know/No opinion	53	41	88	66	304	5%
No response	24	17	47	21	150	2%
TOTAL	1,440	1,188	1,887	1,149	6,572	100%

89. Downtown/Main Street area	Ward 1	Ward 2	Ward 3	Ward 4	Total	Percent
Like	1,289	1,104	1,689	1,023	5,828	89%
Dislike	46	39	76	46	249	4%
Don't know/No opinion	82	34	87	60	354	5%
No response	23	11	35	20	141	2%
TOTAL	1,440	1,188	1,887	1,149	6,572	100%

90. Fieldstone Farms Shopping Center (Hillsboro Road at Fieldstone Parkway)	Ward 1	Ward 2	Ward 3	Ward 4	Total	Percent
Like	374	958	558	546	2,818	43%
Dislike	54	32	60	45	227	3%
Don't know/No opinion	977	187	1,227	529	3,354	51%
No response	35	11	42	29	173	3%
TOTAL	1,440	1,188	1,887	1,149	6,572	100%

91. Independence Square (Hillsboro Road at Del Rio Pike)	Ward 1	Ward 2	Ward 3	Ward 4	Total	Percent
Like	189	399	370	387	1,640	25%
Dislike	358	577	588	470	2,186	33%
Don't know/No opinion	853	187	889	260	2,538	39%
No response	40	25	40	32	208	3%
TOTAL	1,440	1,188	1,887	1,149	6,572	100%

DESIGN PREFERENCES CONTINUED

92. Maples/Alexander Plaza/Watson Glen Shopping Center (Murfreesboro Road near I-65)	Ward 1	Ward 2	Ward 3	Ward 4	Total	Percent
Like	557	447	1,039	544	2,976	45%
Dislike	342	259	387	223	1,334	20%
Don't know/No opinion	500	446	411	349	2,031	31%
No response	41	36	50	33	231	4%
TOTAL	1,440	1,188	1,887	1,149	6,572	100%

93. Franklin Plaza (Columbia Avenue)	Ward 1	Ward 2	Ward 3	Ward 4	Total	Percent
Like	225	222	458	268	1,432	22%
Dislike	243	373	500	377	1,638	25%
Don't know/No opinion	915	556	852	457	3,203	49%
No response	57	37	77	47	299	5%
TOTAL	1,440	1,188	1,887	1,149	6,572	100%

94. Parkway Commons (Columbia Avenue near Mack Hatcher Parkway)	Ward 1	Ward 2	Ward 3	Ward 4	Total	Percent
Like	607	711	1,315	792	3,825	58%
Dislike	46	47	56	60	240	4%
Don't know/No opinion	736	400	459	261	2,264	34%
No response	51	30	57	36	243	4%
TOTAL	1,440	1,188	1,887	1,149	6,572	100%

95. Quail Hollow (Murfreesboro Road at North Carothers Road)	Ward 1	Ward 2	Ward 3	Ward 4	Total	Percent
Like	188	153	267	155	878	13%
Dislike	75	28	92	49	271	4%
Don't know/No opinion	1,122	975	1,457	903	5,139	78%
No response	55	32	71	42	284	4%
TOTAL	1,440	1,188	1,887	1,149	6,572	100%

DESIGN PREFERENCES CONTINUED

96. McKays Mill Neighborhood Center (Liberty Pike at Oxford Glen Drive)	Ward 1	Ward 2	Ward 3	Ward 4	Total	Percent
Like	639	263	391	239	1,735	26%
Dislike	85	39	90	71	335	5%
Don't know/No opinion	679	857	1,343	804	4,266	65%
No response	37	29	63	35	236	4%
TOTAL	1,440	1,188	1,887	1,149	6,572	100%

HOUSING

97. In what type of home do you live?	Ward 1	Ward 2	Ward 3	Ward 4	Total	Percent
Apartment	196	49	111	29	494	8%
Condominium	128	70	66	55	427	6%
Duplex	24	10	15	19	88	1%
Manufactured home (mobile home)	1	1	10	24	51	1%
Single family home	1,022	1,021	1,603	969	5,233	80%
Town house	42	23	56	38	197	3%
Other (specify _____)	0	0	0	0	0	0%
No response	13	10	15	11	82	1%
TOTAL	1,426	1,184	1,876	1,145	6,572	100%

98. Do you think it would be appropriate to include multifamily housing with single family houses in the same neighborhood?	Ward 1	Ward 2	Ward 3	Ward 4	Total	Percent
Yes	228	185	253	205	1,032	16%
No	685	576	1,017	499	3,188	49%
Depending on the design of the dwellings	511	408	591	425	2,228	34%
No response	16	19	26	20	124	2%
TOTAL	1,440	1,188	1,887	1,149	6,572	100%

HOUSING CONTINUED

99. Do you think there should be mixed-income neighborhoods in Franklin, so that families with the starting salary of an elementary school teacher and that of a corporate executive could own a home on the same street in a neighborhood?	Ward 1	Ward 2	Ward 3	Ward 4	Total	Percent
Yes	413	392	561	418	2,105	32%
No	418	345	584	270	1,820	28%
Depending on the design of the homes	589	431	707	437	2,499	38%
No response	20	20	35	24	148	2%
TOTAL	1,440	1,188	1,887	1,149	6,572	100%

TRANSPORTATION

100. Do you think that there is a need for expanded public transportation routes in the City?	Ward 1	Ward 2	Ward 3	Ward 4	Total	Percent
Yes	417	397	538	364	2,052	31%
No	479	375	690	390	2,139	33%
Don't know/No opinion	529	401	639	383	2,283	35%
No response	15	15	20	12	98	1%
TOTAL	1,440	1,188	1,887	1,149	6,572	100%

*101. If you answered yes to the previous question, what other areas of the City would you like to see serviced by public transportation?	Ward 1	Ward 2	Ward 3	Ward 4	Total	Percent
Forrest Crossing	120	99	255	103	662	16%
Fieldstone Farms	145	310	179	143	901	21%
Goose Creek area	144	119	189	115	575	13%
Sullivan Farms	90	77	223	77	529	12%
Westhaven	109	116	137	144	568	13%
McKays Mill	217	73	146	78	593	14%
Other (specify _____)	80	65	103	103	434	10%
<i>All of Franklin</i>					58	
<i>Franklin Green/Willowsprings/Hardison Hills</i>					40	
<i>New Highway 96 West/Founders Pointe/Reid Hill</i>					36	
<i>Cool Springs</i>					32	
<i>Lewisburg Pike/Dallas Downs/Moore's Landing/Sullivan Farms/ Hunters Chase</i>					29	
<i>Mallory Station/Morningside/Jackson Lake/Brentwood Pointe</i>					21	
<i>Other</i>					218	
TOTAL	905	859	1,232	763	4,262	100%

TRANSPORTATION CONTINUED

102. If the trolley service were available on Sundays, would you use the service on Sundays?	Ward 1	Ward 2	Ward 3	Ward 4	Total	Percent
Yes	165	133	201	126	754	11%
No	784	656	1,077	650	3,568	54%
Don't know/No opinion	455	365	555	344	2,040	31%
No response	36	34	54	29	210	3%
TOTAL	1,440	1,188	1,887	1,149	6,572	100%

103. If the trolley service were available in the evenings, would you use the service in the evenings?	Ward 1	Ward 2	Ward 3	Ward 4	Total	Percent
Yes	248	205	310	209	1,144	17%
No	728	603	1,009	578	3,302	50%
Don't know/No opinion	426	348	510	332	1,912	29%
No response	38	32	58	30	214	3%
TOTAL	1,440	1,188	1,887	1,149	6,572	100%

104. Would you use a shuttle service from Franklin to downtown Nashville for special events, such as concerts at the Schermerhorn Symphony Center, performances at the Tennessee Performing Arts Center, or events at the Gaylord Entertainment Center?	Ward 1	Ward 2	Ward 3	Ward 4	Total	Percent
Yes	788	657	944	584	3,457	53%
No	389	310	585	348	1,838	28%
Don't know/No opinion	228	196	302	189	1,078	16%
No response	35	25	56	28	199	3%
TOTAL	1,440	1,188	1,887	1,149	6,572	100%

TRANSPORTATION CONTINUED

*105. How many of the following forms of transportation would you use if they were available?	Ward 1	Ward 2	Ward 3	Ward 4	Total	Percent
Carpool	116	103	139	88	529	6%
Vanpool	80	76	96	64	388	4%
Bus	271	219	315	199	1,206	13%
Commuter train	650	532	784	504	2,789	31%
Trolley service	449	362	501	340	1,962	22%
Bicycle/pedestrian facilities	402	391	537	348	1,837	21%
Other (specify _____)	32	32	66	50	229	3%
<i>Tax service</i>					53	
<i>None</i>					39	
<i>Prefer personal transportation/car</i>					30	
<i>Special event transportation/shuttles</i>					19	
<i>Shuttle service to airport</i>					15	
<i>Sidewalks/trails/greenways</i>					10	
<i>Other</i>					63	
TOTAL	2,000	1,715	2,438	1,593	8,940	100%

106. How congested do you perceive the local streets of Franklin?	Ward 1	Ward 2	Ward 3	Ward 4	Total	Percent
Always/Usually	531	392	916	506	2,725	41%
Sometimes	812	713	890	591	3,444	52%
Rarely	62	64	44	28	236	4%
Never	1	1	1	0	7	0%
No response	34	18	36	24	160	2%
TOTAL	1,440	1,188	1,887	1,149	6,572	100%

107. Do you work outside of Franklin?	Ward 1	Ward 2	Ward 3	Ward 4	Total	Percent
Yes	789	604	961	490	3,179	48%
No	609	560	860	622	3,146	48%
Don't know/No opinion	19	11	25	14	90	1%
No response	23	13	41	23	157	2%
TOTAL	1,440	1,188	1,887	1,149	6,572	100%

TRANSPORTATION CONTINUED

108. If you answered yes to the previous question, indicate your place of work:	Ward 1	Ward 2	Ward 3	Ward 4	Total	Percent
Brentwood	128	126	202	99	633	10%
Fairview	5	1	2	2	12	0%
Nashville/Davidson County	473	378	520	289	1,888	29%
Nolensville	4	1	0	1	7	0%
Spring Hill	33	21	70	24	161	2%
Williamson County	37	20	33	26	170	3%
Other (specify _____)	129	84	169	84	469	7%
<i>Maury County</i>					25	
<i>Rutherford County</i>					83	
<i>Other counties</i>					113	
<i>Other states</i>					48	
<i>Other</i>					200	
No response	631	557	891	624	3,232	49%
TOTAL	1,440	1,188	1,887	1,149	6,572	100%

109. Do other persons in your household work outside of Franklin?	Ward 1	Ward 2	Ward 3	Ward 4	Total	Percent
Yes	481	382	645	334	2,085	32%
No	875	763	1,163	755	4,111	63%
Don't know/No opinion	36	22	27	27	136	2%
No response	48	21	52	33	240	4%
TOTAL	1,440	1,188	1,887	1,149	6,572	100%

110. If you answered yes to the previous question, indicate their place of work:	Ward 1	Ward 2	Ward 3	Ward 4	Total	Percent
Brentwood	80	66	136	71	393	6%
Fairview	3	0	1	5	9	0%
Nashville/Davidson County	280	238	333	186	1,179	18%
Nolensville	5	2	2	3	15	0%
Spring Hill	24	13	44	10	99	2%
Williamson County	21	19	44	19	129	2%
Other (specify _____)	85	59	95	63	353	5%
<i>Maury County</i>					18	
<i>Rutherford County</i>					56	
<i>Other counties</i>					106	
<i>Other states</i>					53	
<i>Other</i>					120	
No response	942	791	1,232	792	4,395	67%
TOTAL	1,440	1,188	1,887	1,149	6,572	100%

TRANSPORTATION CONTINUED

*111. What are the most important traffic-related issues?	Ward 1	Ward 2	Ward 3	Ward 4	Total	Percent
Air pollution	398	289	480	291	1,683	9%
Driving stress	586	445	812	457	2,685	15%
Congestion	1,174	949	1,604	903	5,304	29%
Not enough modes of transportation	149	129	170	124	673	4%
Not enough bicycle facilities	169	179	233	159	823	4%
Not enough sidewalks	250	287	426	302	1,444	8%
Personal safety	375	275	434	282	1,576	9%
Time lost in congestion	826	682	1,222	683	3,895	21%
Other (specify _____)	99	91	106	75	389	2%
<i>Police enforcement/violations/speeding/running red lights</i>					77	
<i>Cell phones/rude/dangerous drivers</i>					46	
<i>Better traffic light coordination/timing</i>					40	
<i>Improve intersections/turn lanes/lighting/signage</i>					33	
<i>Road completion/planning and timing</i>					26	
<i>More interconnectivity/access to I-65</i>					25	
<i>Need street widening</i>					23	
<i>Hillsboro Road/Franklin High School access improvements</i>					21	
<i>Mack Hatcher Parkway completion/widening</i>					16	
<i>Noise</i>					15	
<i>Public transit/gas prices/wasting fuel</i>					12	
<i>Pedestrians and bicyclists on the road/safety/sidewalks</i>					11	
<i>Other</i>					44	
TOTAL	4,026	3,326	5,487	3,276	18,472	100%

112. Do you use the City's cable TV channel or the Traffic Operations Center website to check traffic conditions?	Ward 1	Ward 2	Ward 3	Ward 4	Total	Percent
Never	890	780	1,114	749	4,098	62%
Once or twice	222	155	293	133	890	14%
Sometimes	260	213	386	200	1,216	19%
Frequently	26	21	35	27	139	2%
Very frequently	10	6	13	9	48	1%
No response	32	13	46	31	181	3%
TOTAL	1,440	1,188	1,887	1,149	6,572	100%

TRANSPORTATION CONTINUED

113. If you do use the service in the previous question, how beneficial is this to your travel planning?	Ward 1	Ward 2	Ward 3	Ward 4	Total	Percent
Not very useful	161	140	237	130	754	11%
Somewhat useful	296	200	405	202	1,259	19%
Useful	78	52	101	52	338	5%
Very useful	16	16	22	16	89	1%
No response	889	780	1,122	749	4,132	63%
TOTAL	1,440	1,188	1,887	1,149	6,572	100%

HOUSEHOLD PROFILE

114. How long have you lived in Franklin?	Ward 1	Ward 2	Ward 3	Ward 4	Total	Percent
Less than 1 year	164	73	118	71	500	8%
1 - 5 years	527	378	507	320	1,976	30%
6 - 10 years	321	341	442	214	1,496	23%
Over 10 years	355	314	643	383	1,964	30%
All of my life	56	72	150	144	536	8%
No response	17	10	27	17	100	2%
TOTAL	1,440	1,188	1,887	1,149	6,572	100%

115. How long have you lived in your present dwelling?	Ward 1	Ward 2	Ward 3	Ward 4	Total	Percent
Less than 1 year	242	115	192	121	771	12%
1 - 5 years	684	540	757	496	2,801	43%
6 - 10 years	263	309	443	188	1,390	21%
Over 10 years	228	215	461	316	1,468	22%
All of my life	3	0	12	10	41	1%
No response	20	9	22	18	101	2%
TOTAL	1,440	1,188	1,887	1,149	6,572	100%

HOUSEHOLD PROFILE CONTINUED

116. Where did you live before moving to Franklin?	Ward 1	Ward 2	Ward 3	Ward 4	Total	Percent
Have always lived in Franklin	53	60	141	122	455	7%
Brentwood	185	98	130	74	552	8%
Fairview	5	5	4	5	25	0%
Rural Williamson County	34	33	82	83	288	4%
Nashville/Davidson County	342	257	343	229	1,361	21%
Spring Hill	14	20	28	8	80	1%
Other area in Tennessee	190	153	296	168	899	14%
<i>West Tennessee Counties</i>					210	
<i>Middle Tennessee Counties</i>					426	
<i>East Tennessee Counties</i>					201	
<i>In Tennessee but none specified</i>					62	
Outside of Tennessee	579	536	796	418	2,671	41%
<i>Western United States</i>					286	
<i>Midwestern United States</i>					677	
<i>Southeastern United States</i>					1,138	
<i>Northeastern United States</i>					335	
<i>Outside of Tennessee but none specified</i>					186	
<i>Outside United States</i>					49	
No response	38	26	67	42	241	4%
TOTAL	1,440	1,188	1,887	1,149	6,572	100%

HOUSEHOLD PROFILE CONTINUED

*117. Why did you move to Franklin?	Ward 1	Ward 2	Ward 3	Ward 4	Total	Percent
Have always lived here	46	58	125	109	414	4%
Desired to leave a larger city	120	116	170	104	579	6%
Small town, historic atmosphere	432	450	632	442	2,197	22%
New job	535	439	717	360	2,286	23%
Quality of schools	382	386	528	270	1,732	17%
To live closer to family	238	210	325	222	1,196	12%
Retirement	128	98	113	85	530	5%
Other (specify _____)	316	222	332	205	1,200	12%
<i>Quality of life</i>					283	
<i>Conveniences</i>					211	
<i>Job transfer</i>					184	
<i>New home purchase/downsizing home</i>					119	
<i>Marriage/divorce</i>					85	
<i>Family and friends</i>					69	
<i>More affordable</i>					60	
<i>Liked neighborhood</i>					47	
<i>Schools</i>					29	
<i>Good investment</i>					26	
<i>Hurricane Katrina</i>					13	
<i>Close to music industry</i>					10	
<i>Other</i>					64	
TOTAL	2,197	1,979	2,942	1,797	10,134	100%

DEMOGRAPHICS

118. Highest educational level of head of household:	Ward 1	Ward 2	Ward 3	Ward 4	Total	Percent
K-8	3	1	6	4	31	0%
9-12	11	8	26	27	124	2%
High school graduate or GED	53	74	127	90	465	7%
Some college	242	199	328	199	1,160	18%
College graduate	650	490	817	459	2,700	41%
Graduate school or professional school	461	404	547	354	1,959	30%
No response	20	12	36	16	133	2%
TOTAL	1,440	1,188	1,887	1,149	6,572	100%

119. Indicate the number of children under 18 who live in your household _____.	Ward 1	Ward 2	Ward 3	Ward 4	Total	Percent
0	895	592	1,096	722	4,113	63%
1-2	444	481	657	355	2,022	31%
3-4	95	108	126	66	410	6%
5	3	5	4	5	17	0%
>5	3	2	4	1	10	0%
TOTAL	1,440	1,188	1,887	1,149	6,572	100%

ADDITIONAL COMMENTS

120. Please state the most important issues to the members of your household about the future growth and appearance of Franklin. Also, for the items for which you checked "Dissatisfied," or "Very Dissatisfied," in the previous sections, provide examples or suggestions for improvements.	Ward 1	Ward 2	Ward 3	Ward 4	Total	Percent
Comments on water					196	6%
<i>Poor quality/needs improvement</i>					106	
<i>Stormwater/drainage issues</i>					90	
Comments on growth					592	18%
<i>Too fast/need to control</i>					303	
<i>Want to maintain "small town" charm/character</i>					206	
<i>Positive</i>					34	
<i>Lower and middle class neglect</i>					26	
<i>Immigration issues</i>					23	
Comments on traffic					909	28%
<i>Infrastructure/need for new roads, sidewalks</i>					427	
<i>Congestion/delays</i>					352	
<i>Street conditions</i>					130	
<i>Noise</i>					20	
Comments on city leadership/administration/employees					205	6%
<i>Positive</i>					45	
<i>Negative</i>					146	
<i>Need more citizen participation</i>					14	
Comments on development					265	8%
<i>Housing is not affordable</i>					154	
<i>Residential lot sizes are too small/close together</i>					33	
<i>Good design/planning</i>					22	
<i>Bad design/planning</i>					56	
Comments on schools					108	3%
<i>High quality of education</i>					35	
<i>Rezoning issues</i>					21	
<i>Too crowded/can't keep up</i>					52	

ADDITIONAL COMMENTS CONTINUED

120. Continued. Please state the most important issues to the members of your household about the future growth and appearance of Franklin. Also, for the items for which you checked “Dissatisfied,” or “Very Dissatisfied,” in the previous sections, provide examples or suggestions for improvements.	Ward 1	Ward 2	Ward 3	Ward 4	Total	Percent
Comments on Parks					64	2%
<i>Positive</i>					29	
<i>Negative</i>					12	
Comments on history					165	5%
<i>Support property acquisition/preservation</i>					61	
<i>Do not support property acquisition/preservation</i>					104	
Comments on appearance of city					118	4%
<i>Good/cleanliness</i>					22	
<i>Bad/litter</i>					96	
Comments on city services					162	5%
<i>Stricter code enforcement</i>					56	
<i>Need for better city services/recycling, trash, etc.</i>					106	
Comments on quality of life					147	5%
<i>Good</i>					118	
<i>Bad</i>					29	
Comments on police protection					126	4%
<i>Good</i>					13	
<i>Bad</i>					39	
<i>Need better traffic enforcement</i>					61	
<i>Concern of crime increase</i>					13	
Other comments					149	5%
<i>Need for better public transportation</i>					79	
<i>Need a performing arts center</i>					11	
<i>Taxes are too high/improperly used</i>					36	
<i>Other</i>					23	
TOTAL					3,206	100%

THE 2006 FRANKLIN HOUSEHOLD SURVEY PAST COMPARISON

Historical Survey Data	1987	1996	2000	2006
Total surveys mailed	6,389	10,643	16,952	22,250
Total surveys returned	2,834	3,684	5,092	6,572
Response rate	41%	35%	30%	30%

GROWTH AND DEVELOPMENT

1. How should the City respond to the pace of development that is occurring?	1987		1996		2000		2006	
The City should not permit any additional development	266	11%	31	1%	660	13%	440	7%
The City should limit the amount of additional development	*	*	*	*	*	*	2,178	33%
The City should permit development to continue, but should pass additional regulations to better control the quality of development	2,064	85%	2,427	66%	3,258	64%	2,885	44%
The City should permit development to continue as is currently being regulated	99	4%	386	10%	877	17%	923	14%
The City should permit development to continue without regulation	*	*	708	19%	34	1%	56	1%
No response	*	*	132	4%	74	1%	90	1%

**2. Some cities recruit offices, industries, and commercial and retail businesses. What do you think Franklin should do?	1987		1996		2000		2006	
Encourage companies to locate their offices (for example, corporate headquarters, office developments) in Franklin	1,443	29%	2,371	39%	3,366	66%	3,418	40%
Encourage more commercial businesses to come to Franklin	1,412	29%	1,123	19%	1,210	24%	1,147	13%
Encourage only clean, light industries to come to Franklin	1,309	27%	1,687	28%	2,368	47%	2,354	27%
Encourage industries of all kinds to come to Franklin	386	8%	347	6%	397	8%	632	7%
Do not encourage businesses to come to Franklin	*	*	*	*	*	*	617	7%
Don't know/No opinion	214	4%	229	4%	176	3%	460	5%

3. Would you say the population growth in Franklin during the past five years has been:	1987		1996		2000		2006	
Too fast	*	*	*	*	*	*	4,182	64%
Just right	*	*	*	*	*	*	2,214	34%
Not enough	*	*	*	*	*	*	53	1%
No response	*	*	*	*	*	*	123	2%

GROWTH AND DEVELOPMENT CONTINUED

4. Should Franklin continue to charge fees (for example, impact fees) to new development to cover the cost of providing streets, water, sewer, and other services which will be needed to serve the new development?	1987		1996		2000		2006	
Yes	1,969	83%	2,801	76%	4,236	83%	5,844	89%
No	203	9%	384	10%	438	9%	287	4%
Don't know/No opinion	196	8%	407	11%	374	7%	402	6%
No response	*	*	92	2%	44	1%	39	1%

5. Would you agree to increasing residential compactness in specific areas in the City if it ensured the permanent preservation of agricultural land and natural open space in other areas of the city and Williamson County?	1987		1996		2000		2006	
Yes	*	*	*	*	2,342	46%	3,689	56%
No	*	*	*	*	1,981	39%	1,915	29%
Don't know/No opinion	*	*	*	*	600	12%	897	14%
No response	*	*	*	*	169	3%	71	1%

6. Is the City adequately protecting open space?	1987		1996		2000		2006	
Yes	*	*	*	*	*	*	2,095	32%
No	*	*	*	*	*	*	2,644	40%
Don't know/No opinion	*	*	*	*	*	*	1,778	27%
No response	*	*	*	*	*	*	55	1%

7. Is the City adequately protecting water resources, including streams and rivers?	1987		1996		2000		2006	
Yes	*	*	*	*	*	*	1,522	23%
No	*	*	*	*	*	*	2,238	34%
Don't know/No opinion	*	*	*	*	*	*	2,752	42%
No response	*	*	*	*	*	*	60	1%

GROWTH AND DEVELOPMENT CONTINUED

8. Is the City adequately addressing stormwater (drainage) issues?	1987		1996		2000		2006	
Yes	*	*	*	*	*	*	1,737	26%
No	*	*	*	*	*	*	1,629	25%
Don't know/No opinion	*	*	*	*	*	*	3,163	48%
No response	*	*	*	*	*	*	43	1%

9. Is the City doing an adequate job of protecting its historic properties (for example, the downtown area, historic neighborhoods and historic park properties)?	1987		1996		2000		2006	
Yes	*	*	2,242	61%	3,325	65%	5,116	78%
No	*	*	615	17%	787	15%	798	12%
Don't know/No opinion	*	*	769	21%	932	18%	574	9%
No response	*	*	58	2%	48	1%	84	1%

10. Is the City doing an adequate job of promoting its historic properties?	1987		1996		2000		2006	
Yes	*	*	1,928	52%	3,001	59%	4,149	63%
No	*	*	972	26%	1,182	23%	1,389	21%
Don't know/No opinion	*	*	715	19%	864	17%	947	14%
No response	*	*	69	2%	45	1%	87	1%

11. Rate the general quality of life in Franklin:	1987		1996		2000		2006	
Very satisfied	928	36%	1,792	49%	2,493	49%	3,058	47%
Satisfied	1,425	55%	1,735	47%	2,422	48%	3,173	48%
Dissatisfied	115	4%	44	1%	87	2%	191	3%
Very Dissatisfied	52	2%	38	1%	44	1%	58	1%
Don't know/No opinion	51	2%	33	1%	20	0%	33	1%
No response	*	*	42	1%	26	1%	59	1%

NEIGHBORHOOD CONDITIONS (the area within ¼-mile of your home)

12. Street Cleanliness—dirt and litter	1987		1996		2000		2006	
Very satisfied	*	*	724	20%	1,516	30%	2,122	32%
Satisfied	1,439	57%	2,318	63%	3,080	60%	3,749	57%
No opinion	25	1%	36	1%	20	0%	107	2%
Dissatisfied	690	27%	390	11%	304	6%	454	7%
Very Dissatisfied	356	14%	24	1%	83	2%	55	1%
No response	*	*	74	2%	89	2%	85	1%

13. Street Conditions—potholes, bumps, and pavement	1987		1996		2000		2006	
Very satisfied	*	*	451	12%	1,023	20%	1,278	19%
Satisfied	977	39%	2,173	59%	3,162	62%	3,933	60%
No opinion	19	1%	95	3%	41	1%	223	3%
Dissatisfied	910	36%	669	18%	607	12%	925	14%
Very Dissatisfied	621	25%	207	6%	138	3%	109	2%
No response	*	*	89	2%	121	2%	104	2%

14. Sidewalk Conditions—sidewalks need to be built	1987		1996		2000		2006	
Very satisfied	*	*	410	11%	832	16	1,186	18%
Satisfied	773	33%	1,636	44%	2,418	47	2,972	45%
No opinion	235	10%	467	13%	545	11	757	12%
Dissatisfied	638	27%	718	19%	674	13	1,136	17%
Very Dissatisfied	721	30%	305	8%	301	6	336	5%
No response	*	*	148	4%	322	6	185	3%

15. Sidewalk Conditions—sidewalks need to be repaired	1987		1996		2000		2006	
Very satisfied	*	*	410	11%	771	15	1,150	17%
Satisfied	773	33%	1,636	44%	2,587	51	3,218	49%
No opinion	235	10%	467	13%	869	17	1,375	21%
Dissatisfied	638	27%	718	19%	296	6	444	7%
Very Dissatisfied	721	30%	305	8%	101	2	89	1%
No response	*	*	148	4%	468	9	296	5%

NEIGHBORHOOD CONDITIONS (the area within ¼-mile of your home) CONTINUED

16. Drainage Ditch Capacity—overflow during heavy rains	1987		1996		2000		2006	
Very satisfied	*	*	322	9%	681	13%	892	14%
Satisfied	986	39%	1,871	51%	2,737	54%	3,084	47%
No opinion	170	7%	549	15%	661	13%	1,371	21%
Dissatisfied	685	27%	574	16%	593	12%	890	14%
Very Dissatisfied	701	28%	260	7%	223	4%	187	3%
No response	*	*	108	3%	197	4%	148	2%

**17. What do you like/dislike most about your neighborhood (the area within ¼-mile of your home) and why?	1987		1996		2000		2006	
LIKES								
Proximity to activity centers	*	*	*	*	1,368	37%	1,125	27%
Beauty/landscaping/trees	*	*	*	*	108	4%	569	13%
Clean/well maintained	*	*	*	*	137	4%	460	11%
Sidewalks	*	*	*	*	181	5%	438	10%
Quiet/peaceful	*	*	*	*	151	4%	403	10%
Friendly/sense of community	*	*	*	*	277	8%	364	9%
Safe/secure/low crime rate	*	*	*	*	558	15%	307	7%
Low traffic flow	*	*	*	*	99	3%	154	4%
Schools	*	*	*	*	289	8%	96	2%
Streets	*	*	*	*	123	3%	72	2%
Large lots	*	*	*	*	23	1%	53	1%
Other	*	*	*	*	352	10%	179	4%

NEIGHBORHOOD CONDITIONS (the area within ¼-mile of your home) CONTINUED

**17. CONTINUED. What do you like/dislike most about your neighborhood (the area within ¼-mile of your home) and why?	1987		1996		2000		2006	
DISLIKES								
Traffic/congestion	*	*	*	*	*	*	989	27%
Lack of sidewalks/no connectivity	*	*	*	*	*	*	467	13%
Cars drive too fast	*	*	*	*	*	*	430	12%
Too much noise	*	*	*	*	*	*	172	5%
Properties not well maintained	*	*	*	*	*	*	150	4%
Too much new development	*	*	*	*	*	*	138	4%
Cars parked in street	*	*	*	*	*	*	130	4%
Streets in poor condition	*	*	*	*	*	*	130	4%
Poor drainage	*	*	*	*	*	*	117	3%
Need traffic lights	*	*	*	*	*	*	98	3%
Litter	*	*	*	*	*	*	90	2%
Unsafe/crime	*	*	*	*	*	*	35	1%
Other	*	*	*	*	*	*	717	20%

18. Does your neighborhood (the area within ¼-mile of your home) have a diverse mix of land uses (residences, shops, workplaces)?	1987		1996		2000		2006	
Yes	*	*	*	*	3,114	61%	4,376	67%
No	*	*	*	*	1,836	36%	1,963	30%
Don't know/No opinion	*	*	*	*	86	2%	148	2%
No response	*	*	*	*	56	1%	85	1%

19. Do you think your neighborhood (the area within ¼-mile of your home) is safe for pedestrians?	1987		1996		2000		2006	
Yes	*	*	*	*	4,118	81%	4,588	70%
No	*	*	*	*	826	16%	1,595	24%
Don't know/No opinion	*	*	*	*	108	2%	163	2%
No response	*	*	*	*	40	1%	226	3%

CITYWIDE CONDITIONS

20. Street Cleanliness—dirt and litter	1987		1996		2000		2006	
Very satisfied	*	*	489	12%	1,061	21%	1,409	21%
Satisfied	1,363	56%	2,609	71%	3,500	69%	4,317	66%
No opinion	31	1%	132	4%	59	1%	221	3%
Dissatisfied	813	33%	346	9%	296	6%	460	7%
Very Dissatisfied	246	10%	51	1%	53	1%	51	1%
No response	*	*	107	3%	123	2%	114	2%

21. Street Conditions—potholes, bumps, and pavement	1987		1996		2000		2006	
Very satisfied	*	*	233	6%	728	14%	764	12%
Satisfied	717	28%	2,323	63%	3,470	68%	4,203	64%
No opinion	35	1%	187	5%	88	2%	362	6%
Dissatisfied	1,117	44%	688	19%	570	11%	1,025	16%
Very Dissatisfied	660	26%	118	3%	81	2%	94	1%
No response	*	*	135	4%	155	3%	124	2%

22. Sidewalk Conditions—sidewalks need to be built	1987		1996		2000		2006	
Very satisfied	*	*	202	5%	502	10%	643	10%
Satisfied	975	39%	1,808	49%	2,718	53%	3,224	49%
No opinion	224	9%	650	18%	701	14%	1,106	17%
Dissatisfied	745	30%	712	19%	666	13%	1,151	18%
Very Dissatisfied	539	22%	175	5%	177	3%	237	4%
No response	*	*	137	4%	328	3%	211	3%

CITYWIDE CONDITIONS CONTINUED

23. Sidewalk Conditions—sidewalks need to be repaired	1987		1996		2000		2006	
Very satisfied	*	*	202	5%	489	10%	682	10%
Satisfied	975	39%	1,808	49%	2,836	56%	3,445	52%
No opinion	224	9%	650	18%	898	18%	1,589	24%
Dissatisfied	745	30%	712	19%	385	8%	543	8%
Very Dissatisfied	539	22%	175	5%	70	1%	69	1%
No response	*	*	137	4%	414	8%	244	4%

24. Drainage Ditch Capacity— overflow during heavy rains	1987		1996		2000		2006	
Very satisfied	*	*	186	5%	523	10%	572	9%
Satisfied	740	30%	1,854	50%	2,892	57%	2,956	45%
No opinion	394	16%	909	25%	805	16%	1,900	29%
Dissatisfied	737	29%	476	13%	534	10%	858	13%
Very Dissatisfied	629	25%	119	3%	130	3%	115	2%
No response	*	*	140	4%	208	4%	171	3%

CITY SERVICES

25. Wastewater Service	1987		1996		2000		2006	
Very satisfied	*	*	648	18%	1,100	22%	1,028	16%
Satisfied	1,553	68%	2,509	68%	3,164	62%	3,682	56%
No opinion	291	13%	338	9%	215	4%	1,370	21%
Dissatisfied	279	12%	69	2%	313	6%	253	4%
Very Dissatisfied	171	7%	31	1%	160	3%	46	1%
No response	*	*	89	2%	140	3%	193	3%

26. Water Service— including water quality and pressure	1987		1996		2000		2006	
Very satisfied	*	*	612	17%	1,062	21%	1,148	17%
Satisfied	1,564	71%	2,306	63%	3,073	60%	3,835	58%
No opinion	176	8%	133	4%	96	2%	343	5%
Dissatisfied	221	10%	420	11%	598	12%	934	14%
Very Dissatisfied	241	11%	145	4%	147	3%	188	3%
No response	*	*	68	2%	116	2%	124	2%

CITY SERVICES CONTINUED

27. Stormwater Management Services (Drainage)	1987		1996		2000		2006	
Very satisfied	*	*	*	*	*	*	782	12%
Satisfied	*	*	*	*	*	*	3,196	49%
No opinion	*	*	*	*	*	*	1,487	23%
Dissatisfied	*	*	*	*	*	*	811	12%
Very Dissatisfied	*	*	*	*	*	*	108	2%
No response	*	*	*	*	*	*	188	3%

28. Household Garbage Collection	1987		1996		2000		2006	
Very satisfied	*	*	755	20%	1,705	33%	2,397	36%
Satisfied	1,908	76%	2,381	65%	2,871	56%	3,548	54%
No opinion	105	4%	155	4%	191	4%	284	4%
Dissatisfied	353	14%	250	7%	186	4%	191	3%
Very Dissatisfied	131	5%	77	2%	34	1%	38	1%
No response	*	*	66	2%	105	2%	114	2%

29. Excess Trash/Bulk Pick-up	1987		1996		2000		2006	
Very satisfied	*	*	*	*	*	*	2,173	33%
Satisfied	*	*	*	*	*	*	3,211	49%
No opinion	*	*	*	*	*	*	712	11%
Dissatisfied	*	*	*	*	*	*	299	5%
Very Dissatisfied	*	*	*	*	*	*	53	1%
No response	*	*	*	*	*	*	124	2%

30. Limb and Leaf Service	1987		1996		2000		2006	
Very satisfied	*	*	*	*	1,220	24%	1,756	27%
Satisfied	*	*	*	*	2,592	51%	2,984	45%
No opinion	*	*	*	*	836	16%	1,320	20%
Dissatisfied	*	*	*	*	276	5%	329	5%
Very Dissatisfied	*	*	*	*	59	1%	52	1%
No response	*	*	*	*	109	2%	131	2%

CITY SERVICES CONTINUED

31. Fire Protection	1987		1996		2000		2006	
Very satisfied	*	*	837	23%	1,691	33%	2,321	35%
Satisfied	1,960	79%	2,275	62%	2,863	56%	3,425	52%
No opinion	283	11%	480	13%	444	9%	680	10%
Dissatisfied	173	7%	16	0%	15	0%	40	1%
Very Dissatisfied	67	3%	9	0%	9	0%	12	0%
No response	*	*	67	2%	70	1%	94	1%

32. Police Protection	1987		1996		2000		2006	
Very satisfied	*	*	858	23%	1,672	33%	2,343	36%
Satisfied	1,784	72%	2,303	63%	2,908	57%	3,469	53%
No opinion	221	9%	331	9%	302	6%	438	7%
Dissatisfied	351	14%	95	3%	100	2%	172	3%
Very Dissatisfied	137	5%	27	1%	43	1%	40	1%
No response	*	*	70	2%	67	1%	110	2%

33. Codes Enforcement	1987		1996		2000		2006	
Very satisfied	*	*	402	11%	923	18%	1,161	18%
Satisfied	*	*	1,783	48%	2,692	53%	2,983	45%
No opinion	*	*	974	26%	869	17%	1,589	24%
Dissatisfied	*	*	275	7%	358	7%	530	8%
Very Dissatisfied	*	*	104	3%	145	3%	151	2%
No response	*	*	146	4%	105	2%	158	2%

34. Do you currently recycle glass, aluminum, or paper?	1987		1996		2000		2006	
Yes	*	*	*	*	*	*	2,560	39%
No	*	*	*	*	*	*	3,871	59%
Don't know/No opinion	*	*	*	*	*	*	72	1%
No response	*	*	*	*	*	*	69	1%

CITY SERVICES CONTINUED

35. Do you want the City to implement a citywide curb-side recycling program?	1987		1996		2000		2006	
Yes	*	*	*	*	*	*	3,994	61%
No	*	*	*	*	*	*	1,425	22%
Don't know/No opinion	*	*	*	*	*	*	1,086	17%
No response	*	*	*	*	*	*	67	1%

36. If the City were to implement a curb-side recycling program, how likely would you be to participate?	1987		1996		2000		2006	
Not very likely	*	*	*	*	*	*	1,058	16%
Somewhat likely	*	*	*	*	*	*	1,045	16%
Likely	*	*	*	*	*	*	1,177	18%
Very likely	*	*	*	*	*	*	3,205	49%
No response	*	*	*	*	*	*	87	1%

37. Would you be willing to pay a minimum fee of \$10 a month to fund a curb-side recycling program?	1987		1996		2000		2006	
Yes	*	*	*	*	*	*	1,588	24%
No	*	*	*	*	*	*	4,341	66%
Don't know/No opinion	*	*	*	*	*	*	526	8%
No response	*	*	*	*	*	*	117	2%

CITYWIDE COMMUNITY FACILITIES

38. Availability of park facilities for children under 13	1987		1996		2000		2006	
Very satisfied	*	*	702	19%	1,219	24%	1,787	27%
Satisfied	590	24%	1,737	47%	2,505	49%	2,856	43%
Don't know/No opinion	575	23%	865	23%	904	18%	1,428	22%
Dissatisfied	676	27%	218	6%	283	6%	340	5%
Very Dissatisfied	657	26%	35	1%	36	1%	41	1%
No response	*	*	127	3%	145	3%	120	2%

CITYWIDE COMMUNITY FACILITIES CONTINUED

39. Availability of park facilities for teenagers	1987		1996		2000		2006	
Very satisfied	*	*	238	6%	581	11%	859	13%
Satisfied	284	11%	1,112	30%	2,048	40%	1,994	30%
Don't know/No opinion	525	21%	1,627	44%	1,634	32%	2,769	42%
Dissatisfied	619	25%	480	13%	585	11%	725	11%
Very Dissatisfied	1,074	43%	90	2%	80	2%	79	1%
No response	*	*	137	4%	164	3%	146	2%

40. Availability of park facilities for adults ages 20 and older	1987		1996		2000		2006	
Very satisfied	*	*	*	*	868	17%	1,232	19%
Satisfied	*	*	*	*	2,764	54%	3,067	47%
Don't know/No opinion	*	*	*	*	766	15%	1,499	23%
Dissatisfied	*	*	*	*	473	9%	551	8%
Very Dissatisfied	*	*	*	*	64	1%	79	1%
No response	*	*	*	*	157	3%	144	2%

41. Availability of day-care facilities	1987		1996		2000		2006	
Very satisfied	*	*	174	5%	377	7%	462	7%
Satisfied	*	*	895	24%	1,493	29%	1,171	18%
Don't know/No opinion	*	*	2,168	59%	2,763	54%	4,476	68%
Dissatisfied	*	*	227	6%	189	4%	256	4%
Very Dissatisfied	*	*	46	1%	42	1%	39	1%
No response	*	*	174	5%	228	4%	168	3%

CITYWIDE COMMUNITY FACILITIES CONTINUED

**42. What recreational facilities do you or your family use in Franklin's parks?	1987		1996		2000		2006	
Athletic Fields	*	*	*	*	1,233	28%	1,709	14%
Basketball Courts	*	*	*	*	530	5%	558	5%
Exercise Trails	*	*	*	*	2,889	28%	3,444	28%
Picnic Shelters	*	*	*	*	1,878	18%	1,954	16%
Playground Equipment	*	*	*	*	1,935	19%	2,284	19%
Tennis Courts	*	*	*	*	433	4%	810	7%
Other (specify _____)	*	*	*	*	201	2%	429	4%
<i>Williamson County Recreation Center</i>	*	*	*	*	*	*	114	
<i>Bike trails/sidewalks</i>	*	*	*	*	*	*	94	
<i>Dog park</i>	*	*	*	*	*	*	73	
<i>Open space/Harpeth River</i>	*	*	*	*	*	*	56	
<i>Swimming pools</i>	*	*	*	*	*	*	25	
<i>Public golf course</i>	*	*	*	*	*	*	17	
<i>YMCA</i>	*	*	*	*	*	*	15	
<i>Other</i>	*	*	*	*	*	*	35	
None	*	*	*	*	969	9%	1,007	8%

**43. What other community facilities would you like to have in Franklin? (e.g. parks, cultural facilities, community recreation center, museums, performing arts center, zoological garden, etc.)	1987		1996		2000		2006	
Performing arts centers/amphitheater	*	*	*	*	679	27%	1,069	21%
Parks/open space/river park	*	*	*	*	529	21%	701	14%
Community recreation center	*	*	*	*	83	3%	412	8%
Museum	*	*	*	*	361	14%	665	13%
Gardens (zoological or botanical)	*	*	*	*	230	9%	800	16%
Trails/walking, biking, hiking or nature	*	*	*	*	241	10%	352	7%
Cultural facilities	*	*	*	*	97	4%	307	6%
Public golf course	*	*	*	*	*	*	189	4%
Athletics/tennis courts, pool, basketball courts, ball fields, golf courses	*	*	*	*	154	6%	110	2%
Other	*	*	*	*	118	5%	221	4%
None	*	*	*	*	*	*	214	4%

CITY GOVERNMENT

44. In which Aldermanic Ward do you live?	1987		1996		2000		2006	
Response	*	*	*	*	*	*	5,664	86%
Don't know	*	*	*	*	*	*	538	8%
No response	*	*	*	*	*	*	370	6%

**45. How do you receive information about local government?	1987		1996		2000		2006	
Newspaper	*	*	*	*	*	*	5,629	37%
Cable TV Channel 10 on Comcast	*	*	*	*	*	*	2,217	14%
City web site	*	*	*	*	*	*	741	5%
Public meeting attendance	*	*	*	*	*	*	476	3%
Homeowners association newsletter	*	*	*	*	*	*	1,802	12%
Local radio	*	*	*	*	*	*	1,193	8%
Word of mouth	*	*	*	*	*	*	3,040	20%
Other (specify _____)	*	*	*	*	*	*	318	2%
<i>TV/local news/channel 3</i>	*	*	*	*	*	*	101	
<i>Internet/blogs/Aldermen web sites</i>	*	*	*	*	*	*	66	
<i>Flyers/mailings/magazines</i>	*	*	*	*	*	*	30	
<i>E-mail/Aldermen</i>	*	*	*	*	*	*	42	
<i>Group involvement</i>	*	*	*	*	*	*	17	
<i>Do not receive information</i>	*	*	*	*	*	*	14	
<i>Other</i>	*	*	*	*	*	*	48	

46. How often do you visit the City of Franklin website (www.franklin-gov.com)?	1987		1996		2000		2006	
Never	*	*	*	*	*	*	3,062	47%
Rarely	*	*	*	*	*	*	1,986	30%
Sometimes	*	*	*	*	*	*	1,204	18%
Frequently	*	*	*	*	*	*	204	3%
Very frequently	*	*	*	*	*	*	32	0%
No response	*	*	*	*	*	*	84	1%

CITY GOVERNMENT CONTINUED

**47. Which sections do you frequently view?	1987		1996		2000		2006	
Information	*	*	*	*	*	*	1,788	29%
Departments	*	*	*	*	*	*	1,031	17%
Services	*	*	*	*	*	*	835	13%
Property Taxes	*	*	*	*	*	*	450	7%
Traffic	*	*	*	*	*	*	447	7%
Calendar of events	*	*	*	*	*	*	1,470	24%
Other (specify _____)	*	*	*	*	*	*	213	3%
<i>None</i>	*	*	*	*	*	*	48	
<i>Meeting minutes/agendas</i>	*	*	*	*	*	*	32	
<i>Employment</i>	*	*	*	*	*	*	29	
<i>Other links</i>	*	*	*	*	*	*	28	
<i>Survey/census</i>	*	*	*	*	*	*	11	
<i>Other</i>	*	*	*	*	*	*	65	

48. Would you like to see any improvements made or additional information added to the website?	1987		1996		2000		2006	
Yes (specify _____)	*	*	*	*	*	*	295	6%
<i>Calendar/schedule of events</i>	*	*	*	*	*	*	25	
<i>Public meeting information/updates</i>	*	*	*	*	*	*	18	
<i>Need for updated information</i>	*	*	*	*	*	*	15	
<i>Maps/zoning, GIS, trolley, city</i>	*	*	*	*	*	*	14	
<i>More user friendly</i>	*	*	*	*	*	*	13	
<i>Pay bills online/without charge</i>	*	*	*	*	*	*	12	
<i>Development/planning calendar information</i>	*	*	*	*	*	*	11	
<i>Police information/tickets, arrests, seminars</i>	*	*	*	*	*	*	10	
<i>Traffic issues/status</i>	*	*	*	*	*	*	10	
<i>Better website layout/promotion</i>	*	*	*	*	*	*	10	
<i>Community links/yard sales, tourist information, seniors</i>	*	*	*	*	*	*	10	
<i>Access to public records</i>	*	*	*	*	*	*	10	
<i>Other</i>	*	*	*	*	*	*	137	
No	*	*	*	*	*	*	721	13%
Don't know/No opinion	*	*	*	*	*	*	4,331	81%

CITY GOVERNMENT CONTINUED

49. How often do you watch City's TV channel, Comcast Cable Channel 10?	1987		1996		2000		2006	
I do not have Comcast Cable	*	*	*	*	*	*	810	12%
Never	*	*	*	*	*	*	1,582	24%
Rarely	*	*	*	*	*	*	1,922	29%
Sometimes	*	*	*	*	*	*	1,697	26%
Frequently	*	*	*	*	*	*	388	6%
Very frequently	*	*	*	*	*	*	87	1%
No response	*	*	*	*	*	*	86	1%

**50. Which programs have you watched?	1987		1996		2000		2006	
Public meetings	*	*	*	*	*	*	2,725	36%
Cultural arts	*	*	*	*	*	*	783	10%
Interviews	*	*	*	*	*	*	767	10%
Perils for Pedestrians	*	*	*	*	*	*	98	1%
TraffiCast	*	*	*	*	*	*	1,136	15%
Information Billboard slide show	*	*	*	*	*	*	801	11%
Army Newswatch	*	*	*	*	*	*	135	2%
Education News	*	*	*	*	*	*	968	13%
Other (specify program subjects or show titles _____)	*	*	*	*	*	*	147	2%
<i>Don't watch/don't have cable</i>	*	*	*	*	*	*	50	
<i>School/programs/board meetings/closings/sports</i>	*	*	*	*	*	*	36	
<i>Events/local/historical/social/parades</i>	*	*	*	*	*	*	19	
<i>Special meetings/lectures/debates</i>	*	*	*	*	*	*	11	
<i>Other</i>	*	*	*	*	*	*	31	

CITY GOVERNMENT CONTINUED

51. Would you like to see any additional programming added to Cable Channel 10?	1987		1996		2000		2006	
Yes (specify _____)	*	*	*	*	*	*	345	5%
<i>Franklin shows/events/highlights</i>	*	*	*	*	*	*	61	
<i>School programs/closings/events/information</i>	*	*	*	*	*	*	42	
<i>Public meetings/committees/debates/voting information</i>	*	*	*	*	*	*	36	
<i>Local news/weather</i>	*	*	*	*	*	*	31	
<i>Cultural arts</i>	*	*	*	*	*	*	25	
<i>Local sports/high school</i>	*	*	*	*	*	*	23	
<i>Citizen-developed programs</i>	*	*	*	*	*	*	22	
<i>Improvements to appearance/style/background music</i>	*	*	*	*	*	*	21	
<i>Long-term planning/issues/zoning</i>	*	*	*	*	*	*	20	
<i>Local business information/interviews</i>	*	*	*	*	*	*	14	
<i>Health/wellness/exercise</i>	*	*	*	*	*	*	12	
<i>Public safety/police/fire</i>	*	*	*	*	*	*	11	
<i>Other</i>	*	*	*	*	*	*	27	
No	*	*	*	*	*	*	842	13%
Don't know/No opinion	*	*	*	*	*	*	4,218	64%
No response	*	*	*	*	*	*	1,167	18%

52. The overall direction of the City is on the right track.	1987		1996		2000		2006	
Strongly agree	*	*	*	*	*	*	921	14%
Agree somewhat	*	*	*	*	*	*	3,494	53%
Neither agree nor disagree	*	*	*	*	*	*	806	12%
Disagree somewhat	*	*	*	*	*	*	858	13%
Strongly disagree	*	*	*	*	*	*	278	4%
No response	*	*	*	*	*	*	215	3%

53. The City does a good job of keeping citizens informed about City issues.	1987		1996		2000		2006	
Strongly agree	*	*	*	*	*	*	643	10%
Agree somewhat	*	*	*	*	*	*	2,854	43%
Neither agree nor disagree	*	*	*	*	*	*	1,670	25%
Disagree somewhat	*	*	*	*	*	*	941	14%
Strongly disagree	*	*	*	*	*	*	260	4%
No response	*	*	*	*	*	*	204	3%

CITY GOVERNMENT CONTINUED

54. The Board of Mayor and Aldermen is responsive to the needs of citizens.	1987		1996		2000		2006	
Strongly agree	*	*	*	*	*	*	452	7%
Agree somewhat	*	*	*	*	*	*	2,075	32%
Neither agree nor disagree	*	*	*	*	*	*	2,693	41%
Disagree somewhat	*	*	*	*	*	*	789	12%
Strongly disagree	*	*	*	*	*	*	344	5%
No response	*	*	*	*	*	*	219	3%

55. The Board of Mayor and Aldermen effectively represents the attitudes and opinions of the residents of Franklin.	1987		1996		2000		2006	
Strongly agree	*	*	*	*	*	*	350	5%
Agree somewhat	*	*	*	*	*	*	1,884	29%
Neither agree nor disagree	*	*	*	*	*	*	2,619	40%
Disagree somewhat	*	*	*	*	*	*	1,030	16%
Strongly disagree	*	*	*	*	*	*	462	7%
No response	*	*	*	*	*	*	227	3%

56. The City employees are responsive to citizen concerns.	1987		1996		2000		2006	
Strongly agree	*	*	*	*	*	*	775	12%
Agree somewhat	*	*	*	*	*	*	2,725	41%
Neither agree nor disagree	*	*	*	*	*	*	2,289	35%
Disagree somewhat	*	*	*	*	*	*	419	6%
Strongly disagree	*	*	*	*	*	*	129	2%
No response	*	*	*	*	*	*	235	4%

57. The City does a good job in managing its finances.	1987		1996		2000		2006	
Strongly agree	*	*	*	*	*	*	508	8%
Agree somewhat	*	*	*	*	*	*	2,117	32%
Neither agree nor disagree	*	*	*	*	*	*	2,836	43%
Disagree somewhat	*	*	*	*	*	*	580	9%
Strongly disagree	*	*	*	*	*	*	299	5%
No response	*	*	*	*	*	*	232	4%

CITY GOVERNMENT CONTINUED

58. The City is making good progress in improving city streets.	1987		1996		2000		2006	
Strongly agree	*	*	*	*	*	*	581	9%
Agree somewhat	*	*	*	*	*	*	3,119	47%
Neither agree nor disagree	*	*	*	*	*	*	1,404	21%
Disagree somewhat	*	*	*	*	*	*	925	14%
Strongly disagree	*	*	*	*	*	*	331	5%
No response	*	*	*	*	*	*	212	3%

59. The City should work towards building around town centers where people live close to places of work, shopping, and play.	1987		1996		2000		2006	
Strongly agree	*	*	*	*	*	*	1,193	18%
Agree somewhat	*	*	*	*	*	*	2,392	36%
Neither agree nor disagree	*	*	*	*	*	*	1,822	28%
Disagree somewhat	*	*	*	*	*	*	625	10%
Strongly disagree	*	*	*	*	*	*	309	5%
No response	*	*	*	*	*	*	231	4%

60. The City should encourage a mix of housing styles to serve changing preferences.	1987		1996		2000		2006	
Strongly agree	*	*	*	*	*	*	1,553	24%
Agree somewhat	*	*	*	*	*	*	2,510	38%
Neither agree nor disagree	*	*	*	*	*	*	1,187	18%
Disagree somewhat	*	*	*	*	*	*	741	11%
Strongly disagree	*	*	*	*	*	*	361	5%
No response	*	*	*	*	*	*	220	3%

61. Police visibility and responsiveness to the residential community is good.	1987		1996		2000		2006	
Strongly agree	*	*	*	*	*	*	2,554	39%
Agree somewhat	*	*	*	*	*	*	2,815	43%
Neither agree nor disagree	*	*	*	*	*	*	583	9%
Disagree somewhat	*	*	*	*	*	*	291	4%
Strongly disagree	*	*	*	*	*	*	151	2%
No response	*	*	*	*	*	*	178	3%

CITY GOVERNMENT CONTINUED

62. The enforcement of traffic laws in the City is adequate.	1987		1996		2000		2006	
Strongly agree	*	*	*	*	*	*	1,819	28%
Agree somewhat	*	*	*	*	*	*	2,966	45%
Neither agree nor disagree	*	*	*	*	*	*	765	12%
Disagree somewhat	*	*	*	*	*	*	552	8%
Strongly disagree	*	*	*	*	*	*	290	4%
No response	*	*	*	*	*	*	180	3%

63. Schools should be built in and around residential neighborhoods.	1987		1996		2000		2006	
Strongly agree	*	*	*	*	*	*	2,744	42%
Agree somewhat	*	*	*	*	*	*	2,142	33%
Neither agree nor disagree	*	*	*	*	*	*	1,012	15%
Disagree somewhat	*	*	*	*	*	*	289	4%
Strongly disagree	*	*	*	*	*	*	209	3%
No response	*	*	*	*	*	*	176	3%

PROXIMITY TO ACTIVITY CENTERS

64. How close do you live to a grocery store?	1987		1996		2000		2006	
I can walk	*	*	*	*	*	*	1,131	17%
Less than 1/4 mile	802	17%	646	18%	1,024	20%	721	11%
1/4 -1/2 mile	630	13%	825	22%	1,279	25%	1,190	18%
1/2 - 1 mile	629	13%	1,056	29%	1,590	31%	1,768	27%
More than 1 mile	624	13%	955	26%	1,161	23%	1,689	26%
No response	*	*	43	1%	38	1%	73	1%

PROXIMITY TO ACTIVITY CENTERS CONTINUED

65. How close to a grocery store would you like to live?	1987		1996		2000		2006	
I can walk	*	*	*	*	*	*	937	14%
Less than 1/4 mile	577	25%	462	13%	754	15%	837	13%
1/4 -1/2 mile	416	18%	776	21%	1,243	24%	1,355	21%
1/2 - 1 mile	707	30%	1,260	34%	1,639	32%	1,886	29%
More than 1 mile	651	28%	955	26%	1,110	22%	1,217	19%
No response	*	*	231	6%	346	7%	340	5%

66. How close do you live to restaurants or entertainment?	1987		1996		2000		2006	
I can walk	*	*	*	*	*	*	815	12%
Less than 1/4 mile	*	*	*	*	*	*	587	9%
1/4 -1/2 mile	*	*	*	*	*	*	1,090	17%
1/2 - 1 mile	*	*	*	*	*	*	1,716	26%
More than 1 mile	*	*	*	*	*	*	2,251	34%
No response	*	*	*	*	*	*	113	2%

67. How close to restaurants or entertainment would you like to live?	1987		1996		2000		2006	
I can walk	*	*	*	*	*	*	687	10%
Less than 1/4 mile	*	*	*	*	*	*	626	10%
1/4 -1/2 mile	*	*	*	*	*	*	1,094	17%
1/2 - 1 mile	*	*	*	*	*	*	1,837	28%
More than 1 mile	*	*	*	*	*	*	2,000	30%
No response	*	*	*	*	*	*	328	5%

68. How close do you live to other shopping?	1987		1996		2000		2006	
I can walk	*	*	*	*	*	*	465	7%
Less than 1/4 mile	416	15%	297	8%	454	9%	347	5%
1/4 -1/2 mile	671	24%	517	14%	770	15%	725	11%
1/2 - 1 mile	709	25%	938	25%	1,380	27%	1,529	23%
More than 1 mile	1,007	36%	1,861	51%	2,393	47%	3,385	52%
No response	*	*	71	2%	95	2%	121	2%

PROXIMITY TO ACTIVITY CENTERS CONTINUED

69. How close to other shopping would you like to live?	1987		1996		2000		2006	
I can walk	*	*	*	*	*	*	422	6%
Less than 1/4 mile	*	*	226	6%	341	7%	397	6%
1/4 - 1/2 mile	*	*	463	13%	689	14%	772	12%
1/2 - 1 mile	*	*	941	26%	1,337	26%	1,589	24%
More than 1 mile	*	*	1,806	49%	2,389	47%	3,050	46%
No response	*	*	71	2%	336	7%	342	5%

70. How close do you live to a park?	1987		1996		2000		2006	
I can walk	*	*	*	*	*	*	1,097	17%
Less than 1/4 mile	*	*	*	*	773	15%	433	7%
1/4 - 1/2 mile	*	*	*	*	767	15%	805	12%
1/2 - 1 mile	*	*	*	*	1,083	21%	1,177	18%
More than 1 mile	*	*	*	*	2,340	46%	2,910	44%
No response	*	*	*	*	129	3%	150	2%

71. How close to a park would you like to live?	1987		1996		2000		2006	
I can walk	*	*	*	*	*	*	1,582	24%
Less than 1/4 mile	*	*	*	*	914	18%	695	11%
1/4 - 1/2 mile	*	*	*	*	979	19%	1,040	16%
1/2 - 1 mile	*	*	*	*	1,503	30%	1,522	23%
More than 1 mile	*	*	*	*	1,349	26%	1,393	21%
No response	*	*	*	*	347	7%	340	5%

DESIGN PREFERENCES

72. Cul-de-sacs	1987		1996		2000		2006	
Like	*	*	*	*	3,847	76%	4,986	76%
Dislike	*	*	*	*	316	6%	523	8%
Don't know/No opinion	*	*	*	*	494	10%	869	13%
No response	*	*	*	*	435	9%	194	3%

73. Developments with mixed housing types, shops, and offices	1987		1996		2000		2006	
Like	*	*	*	*	2,215	43%	3,698	56%
Dislike	*	*	*	*	1,861	37%	1,644	25%
Don't know/No opinion	*	*	*	*	658	13%	1,016	15%
No response	*	*	*	*	358	7%	214	3%

74. Front-loading garages	1987		1996		2000		2006	
Like	*	*	*	*	1,543	30%	1,341	20%
Dislike	*	*	*	*	2,595	51%	3,700	56%
Don't know/No opinion	*	*	*	*	693	14%	1,390	21%
No response	*	*	*	*	261	5%	141	2%

75. Front porches	1987		1996		2000		2006	
Like	*	*	*	*	4,553	89%	5,907	90%
Dislike	*	*	*	*	130	3%	152	2%
Don't know/No opinion	*	*	*	*	216	4%	389	6%
No response	*	*	*	*	193	4%	124	2%

DESIGN PREFERENCES CONTINUED

76. Small lot sizes (4,000 to 9,000 square feet or 0.1 to 0.2 acre)	1987		1996		2000		2006	
Like	*	*	*	*	1,366	27%	1,475	22%
Dislike	*	*	*	*	2,629	52%	3,882	59%
Don't know/No opinion	*	*	*	*	556	11%	980	15%
No response	*	*	*	*	541	11%	235	4%

77. Medium lot sizes (10,000 to 19,999 square feet or 0.23 to 0.46 acre)	1987		1996		2000		2006	
Like	*	*	*	*	3,575	70%	4,355	66%
Dislike	*	*	*	*	606	12%	1,045	16%
Don't know/No opinion	*	*	*	*	476	9%	934	14%
No response	*	*	*	*	435	9%	238	4%

78. Large lot sizes (20,000 square feet or greater or 0.46 acre or greater)	1987		1996		2000		2006	
Like	*	*	*	*	3,556	70%	4,488	68%
Dislike	*	*	*	*	419	8%	700	11%
Don't know/No opinion	*	*	*	*	559	11%	1,121	17%
No response	*	*	*	*	558	11%	263	4%

79. Rear-entry garages	1987		1996		2000		2006	
Like	*	*	*	*	4,080	80%	4,930	75%
Dislike	*	*	*	*	282	6%	534	8%
Don't know/No opinion	*	*	*	*	467	9%	965	15%
No response	*	*	*	*	263	5%	143	2%

DESIGN PREFERENCES CONTINUED

80. On-street parking	1987		1996		2000		2006	
Like	*	*	*	*	1,009	20%	1,133	17%
Dislike	*	*	*	*	3,436	67%	4,657	71%
Don't know/No opinion	*	*	*	*	385	8%	622	9%
No response	*	*	*	*	262	5%	160	2%

81. Single-family developments	1987		1996		2000		2006	
Like	*	*	*	*	4,365	86%	5,750	87%
Dislike	*	*	*	*	177	3%	167	3%
Don't know/No opinion	*	*	*	*	304	6%	495	8%
No response	*	*	*	*	246	5%	160	2%

82. Street connectivity	1987		1996		2000		2006	
Like	*	*	*	*	*	*	4,597	70%
Dislike	*	*	*	*	*	*	606	9%
Don't know/No opinion	*	*	*	*	*	*	1,119	17%
No response	*	*	*	*	*	*	250	4%

83. Smaller residential lots clustered around open spaces and parks	1987		1996		2000		2006	
Like	*	*	*	*	*	*	3,804	58%
Dislike	*	*	*	*	*	*	1,400	21%
Don't know/No opinion	*	*	*	*	*	*	1,173	18%
No response	*	*	*	*	*	*	195	3%

DESIGN PREFERENCES CONTINUED

84. Alleys/rear-service drives	1987		1996		2000		2006	
Like	*	*	*	*	*	*	2,726	41%
Dislike	*	*	*	*	*	*	2,357	36%
Don't know/No opinion	*	*	*	*	*	*	1,296	20%
No response	*	*	*	*	*	*	193	3%

85. Bicycle facilities—Shared on street (bike lanes or wide outside lanes)	1987		1996		2000		2006	
Like	*	*	*	*	*	*	3,631	55%
Dislike	*	*	*	*	*	*	1,933	29%
Don't know/No opinion	*	*	*	*	*	*	841	13%
No response	*	*	*	*	*	*	167	3%

86. Bicycle facilities—shared off street (along streets but separated on bike paths)	1987		1996		2000		2006	
Like	*	*	*	*	*	*	4,965	76%
Dislike	*	*	*	*	*	*	504	8%
Don't know/No opinion	*	*	*	*	*	*	913	14%
No response	*	*	*	*	*	*	190	3%

**87. Which do you think the City should give more importance to when evaluating new subdivision developments?	1987		1996		2000		2006	
Design	*	*	*	*	612	12%	692	9%
Density	*	*	*	*	385	8%	944	13%
Location	*	*	*	*	*	*	673	9%
All three	*	*	*	*	*	*	4,943	66%
Don't know/No opinion	*	*	*	*	*	*	220	3%

DESIGN PREFERENCES CONTINUED

88. Cool Springs/Galleria	1987		1996		2000		2006	
Like	*	*	*	*	4,619	91%	5,503	84%
Dislike	*	*	*	*	307	6%	615	9%
Don't know/No opinion	*	*	*	*	75	1%	304	5%
No response	*	*	*	*	91	2%	150	2%

89. Downtown/Main Street area	1987		1996		2000		2006	
Like	*	*	*	*	4,686	92%	5,828	89%
Dislike	*	*	*	*	155	3%	249	4%
Don't know/No opinion	*	*	*	*	161	3%	354	5%
No response	*	*	*	*	90	2%	141	2%

90. Fieldstone Farms Shopping Center (Hillsboro Road at Fieldstone Parkway)	1987		1996		2000		2006	
Like	*	*	*	*	2,828	56%	2,818	43%
Dislike	*	*	*	*	304	6%	227	3%
Don't know/No opinion	*	*	*	*	1,812	36%	3,354	51%
No response	*	*	*	*	148	3%	173	3%

91. Independence Square (Hillsboro Road at Del Rio Pike)	1987		1996		2000		2006	
Like	*	*	*	*	1,883	37%	1,640	25%
Dislike	*	*	*	*	1,586	31%	2,186	33%
Don't know/No opinion	*	*	*	*	1,436	28%	2,538	39%
No response	*	*	*	*	187	4%	208	3%

DESIGN PREFERENCES CONTINUED

92. Maples/Alexander Plaza/Watson Glen Shopping Center (Murfreesboro Road near I-65)	1987		1996		2000		2006	
Like	*	*	*	*	3,203	63%	2,976	45%
Dislike	*	*	*	*	1,009	20%	1,334	20%
Don't know/No opinion	*	*	*	*	708	14%	2,031	31%
No response	*	*	*	*	172	3%	231	4%

93. Franklin Plaza (Columbia Avenue)	1987		1996		2000		2006	
Like	*	*	*	*	1,083	21%	1,432	22%
Dislike	*	*	*	*	1,653	32%	1,638	25%
Don't know/No opinion	*	*	*	*	2,130	42%	3,203	49%
No response	*	*	*	*	226	4%	299	5%

94. Parkway Commons (Columbia Avenue near Mack Hatcher Parkway)	1987		1996		2000		2006	
Like	*	*	*	*	*	*	3,825	58%
Dislike	*	*	*	*	*	*	240	4%
Don't know/No opinion	*	*	*	*	*	*	2,264	34%
No response	*	*	*	*	*	*	243	4%

95. Quail Hollow (Murfreesboro Road at North Carothers Road)	1987		1996		2000		2006	
Like	*	*	*	*	*	*	878	13%
Dislike	*	*	*	*	*	*	271	4%
Don't know/No opinion	*	*	*	*	*	*	5,139	78%
No response	*	*	*	*	*	*	284	4%

DESIGN PREFERENCES CONTINUED

96. McKays Mill Neighborhood Center (Liberty Pike at Oxford Glen Drive)	1987		1996		2000		2006	
Like	*	*	*	*	*	*	1,735	26%
Dislike	*	*	*	*	*	*	335	5%
Don't know/No opinion	*	*	*	*	*	*	4,266	65%
No response	*	*	*	*	*	*	236	4%

HOUSING

97. In what type of home do you live?	1987		1996		2000		2006	
Apartment	354	14%	436	12%	633	12%	494	8%
Condominium	337	7%	256	7%	337	7%	427	6%
Duplex	91	3%	66	2%	63	1%	88	1%
Manufactured home (mobile home)	107	4%	77	2%	68	1%	51	1%
Single family home	1,834	70%	2,809	76%	3,937	77%	5,233	80%
Town house	38	1%	14	0%	20	0%	197	3%
Other (specify _____)	*	*	*	*	*	*	0	0%
No response	*	*	26	1%	34	1%	82	1%

98. Do you think it would be appropriate to include multifamily housing with single family houses in the same neighborhood?	1987		1996		2000		2006	
Yes	*	*	*	*	1,582	31%	1,032	16%
No	*	*	*	*	2,830	56%	3,188	49%
Depending on the design of the dwellings	*	*	*	*	*	*	2,228	34%
No response	*	*	*	*	96	2%	124	2%

HOUSING CONTINUED

99. Do you think there should be mixed-income neighborhoods in Franklin, so that families with the starting salary of an elementary school teacher and that of a corporate executive could own a home on the same street in a neighborhood?	1987		1996		2000		2006	
	*	*	*	*	*	*	*	*
Yes	*	*	*	*	1,885	37%	2,105	32%
No	*	*	*	*	2,666	52%	1,820	28%
Depending on the design of the homes	*	*	*	*	*	*	2,499	38%
No response	*	*	*	*	92	2%	148	2%

TRANSPORTATION

100. Do you think that there is a need for expanded public transportation routes in the City?	1987		1996		2000		2006	
	*	*	*	*	*	*	*	*
Yes	*	*	1,366	37%	1,906	37%	2,052	31%
No	*	*	1,318	36%	2,037	40%	2,139	33%
Don't know/No opinion	*	*	892	24%	1,089	21%	2,283	35%
No response	*	*	108	3%	60	1%	98	1%

**101. If you answered yes to the previous question, what other areas of the City would you like to see serviced by public transportation?	1987		1996		2000		2006	
	*	*	*	*	*	*	*	*
Forrest Crossing	*	*	*	*	*	*	662	16%
Fieldstone Farms	*	*	*	*	*	*	901	21%
Goose Creek area	*	*	*	*	*	*	575	13%
Sullivan Farms	*	*	*	*	*	*	529	12%
Westhaven	*	*	*	*	*	*	568	13%
McKays Mill	*	*	*	*	*	*	593	14%
Other (specify _____)	*	*	*	*	*	*	434	10%
<i>All of Franklin</i>	*	*	*	*	*	*	58	
<i>Franklin Green/Willowsprings/Hardison Hills</i>	*	*	*	*	*	*	40	
<i>New Highway 96 West/Founders Pointe/Reid Hill</i>	*	*	*	*	*	*	36	
<i>Cool Springs</i>	*	*	1,149	28%	1,667	33%	32	
<i>Lewisburg Pike/Dallas Downs/Moore's Landing/Sullivan Farms/ Hunters Chase</i>	*	*	*	*	*	*	29	
<i>Mallory Station/Morningside/Jackson Lake/Brentwood Pointe</i>	*	*	*	*	*	*	21	
<i>Other</i>	*	*	3,032	73%	4,144	82%	218	

TRANSPORTATION CONTINUED

102. If the trolley service were available on Sundays, would you use the service on Sundays?	1987		1996		2000		2006	
Yes	*	*	*	*	*	*	754	11%
No	*	*	*	*	*	*	3,568	54%
Don't know/No opinion	*	*	*	*	*	*	2,040	31%
No response	*	*	*	*	*	*	210	3%

103. If the trolley service were available in the evenings, would you use the service in the evenings?	1987		1996		2000		2006	
Yes	*	*	*	*	*	*	1,144	17%
No	*	*	*	*	*	*	3,302	50%
Don't know/No opinion	*	*	*	*	*	*	1,912	29%
No response	*	*	*	*	*	*	214	3%

104. Would you use a shuttle service from Franklin to downtown Nashville for special events, such as concerts at the Schermerhorn Symphony Center, performances at the Tennessee Performing Arts Center, or events at the Gaylord Entertainment Center?	1987		1996		2000		2006	
Yes	*	*	*	*	*	*	3,457	53%
No	*	*	*	*	*	*	1,838	28%
Don't know/No opinion	*	*	*	*	*	*	1,078	16%
No response	*	*	*	*	*	*	199	3%

TRANSPORTATION CONTINUED

**105. How many of the following forms of transportation would you use if they were available?	1987		1996		2000		2006	
Carpool	*	*	389	11%	324	6%	529	6%
Vanpool	*	*	235	6%	322	6%	388	4%
Bus	*	*	717	20%	1,403	28%	1,206	13%
Commuter train	*	*	1,064	29%	1,708	34%	2,789	31%
Trolley service	*	*	*	*	*	*	1,962	22%
Bicycle/pedestrian facilities	*	*	*	*	1,652	32%	1,837	21%
Other (specify _____)	*	*	*	*	*	*	229	3%
<i>Tax service</i>	*	*	*	*	*	*	53	
<i>None</i>	*	*	*	*	*	*	39	
<i>Prefer personal transportation/car</i>	*	*	*	*	*	*	30	
<i>Special event transportation/shuttles</i>	*	*	*	*	*	*	19	
<i>Shuttle service to airport</i>	*	*	*	*	*	*	15	
<i>Sidewalks/trails/greenways</i>	*	*	*	*	*	*	10	
<i>Other</i>	*	*	1,252	34%	301	5%	63	

106. How congested do you perceive the local streets of Franklin?	1987		1996		2000		2006	
Always/Usually	*	*	*	*	1,768	35%	2,725	41%
Sometimes	*	*	*	*	2,941	58%	3,444	52%
Rarely	*	*	*	*	295	6%	236	4%
Never	*	*	*	*	13	0%	7	0%
No response	*	*	*	*	75	1%	160	2%

107. Do you work outside of Franklin?	1987		1996		2000		2006	
Yes	*	*	*	*	2,910	57%	3,179	48%
No	*	*	*	*	2,035	40%	3,146	48%
Don't know/No opinion	*	*	*	*	55	1%	90	1%
No response	*	*	*	*	92	2%	157	2%

TRANSPORTATION CONTINUED

108. If you answered yes to the previous question, indicate your place of work:	1987		1996		2000		2006	
Brentwood	*	*	*	*	605	12%	633	10%
Fairview	*	*	*	*	55	1%	12	0%
Nashville/Davidson County	*	*	*	*	1,552	30%	1,888	29%
Nolensville	*	*	*	*	2	0%	7	0%
Spring Hill	*	*	*	*	251	5%	161	2%
Williamson County	*	*	*	*	138	3%	170	3%
Other (specify _____)	*	*	*	*	*	*	469	7%
<i>Maury County</i>	*	*	*	*	*	*	25	
<i>Rutherford County</i>	*	*	*	*	*	*	83	
<i>Other counties</i>	*	*	*	*	*	*	113	
<i>Other states</i>	*	*	*	*	*	*	48	
<i>Other</i>	*	*	*	*	382	8%	200	
No response	*	*	*	*	2,107	41%	3,232	49%

109. Do other persons in your household work outside of Franklin?	1987		1996		2000		2006	
Yes	*	*	*	*	*	*	2,085	32%
No	*	*	*	*	*	*	4,111	63%
Don't know/No opinion	*	*	*	*	*	*	136	2%
No response	*	*	*	*	*	*	240	4%

110. If you answered yes to the previous question, indicate their place of work:	1987		1996		2000		2006	
Brentwood	*	*	*	*	*	*	393	6%
Fairview	*	*	*	*	*	*	0	0%
Nashville/Davidson County	*	*	*	*	*	*	1,179	18%
Nolensville	*	*	*	*	*	*	15	0%
Spring Hill	*	*	*	*	*	*	99	2%
Williamson County	*	*	*	*	*	*	129	2%
Other (specify _____)	*	*	*	*	*	*	353	5%
<i>Maury County</i>	*	*	*	*	*	*	18	-
<i>Rutherford County</i>	*	*	*	*	*	*	56	-
<i>Other counties</i>	*	*	*	*	*	*	106	-
<i>Other states</i>	*	*	*	*	*	*	53	-
<i>Other</i>	*	*	*	*	*	*	120	-
No response	*	*	*	*	*	*	4,395	67%

TRANSPORTATION CONTINUED

**111. What are the most important traffic-related issues?	1987		1996		2000		2006	
Air pollution	*	*	*	*	1,051	21%	1,683	9%
Driving stress	*	*	*	*	1,962	39%	2,685	15%
Congestion	*	*	*	*	3,204	63%	5,304	29%
Not enough modes of transportation	*	*	*	*	756	15%	673	4%
Not enough bicycle facilities	*	*	*	*	*	*	823	4%
Not enough sidewalks	*	*	*	*	905	18%	1,444	8%
Personal safety	*	*	*	*	2,937	58%	1,576	9%
Time lost in congestion	*	*	*	*	2,858	56%	3,895	21%
Other (specify _____)	*	*	*	*	*	*	389	2%
<i>Police enforcement/violations/speeding/running red lights</i>	*	*	*	*	*	*	77	
<i>Cell phones/rude/dangerous drivers</i>	*	*	*	*	*	*	46	
<i>Better traffic light coordination/timing</i>	*	*	*	*	*	*	40	
<i>Improve intersections/turn lanes/lighting/signage</i>	*	*	*	*	*	*	33	
<i>Road completion/planning and timing</i>	*	*	*	*	*	*	26	
<i>More interconnectivity/access to I-65</i>	*	*	*	*	*	*	25	
<i>Need street widening</i>	*	*	*	*	*	*	23	
<i>Hillsboro Road/Franklin High School access improvements</i>	*	*	*	*	*	*	21	
<i>Mack Hatcher Parkway completion/widening</i>	*	*	*	*	*	*	16	
<i>Noise</i>	*	*	*	*	*	*	15	
<i>Public transit/gas prices/wasting fuel</i>	*	*	*	*	*	*	12	
<i>Pedestrians and bicyclists on the road/safety/sidewalks</i>	*	*	*	*	*	*	11	
<i>Other</i>	*	*	*	*	*	*	44	

112. Do you use the City's cable TV channel or the Traffic Operations Center website to check traffic conditions?	1987		1996		2000		2006	
Never	*	*	*	*	*	*	4,098	62%
Once or twice	*	*	*	*	*	*	890	14%
Sometimes	*	*	*	*	*	*	1,216	19%
Frequently	*	*	*	*	*	*	139	2%
Very frequently	*	*	*	*	*	*	48	1%
No response	*	*	*	*	*	*	181	3%

TRANSPORTATION CONTINUED

113. If you do use the service in the previous question, how beneficial is this to your travel planning?	1987		1996		2000		2006	
Not very useful	*	*	*	*	*	*	754	11%
Somewhat useful	*	*	*	*	*	*	1,259	19%
Useful	*	*	*	*	*	*	338	5%
Very useful	*	*	*	*	*	*	89	1%
No response	*	*	*	*	*	*	4,132	63%

HOUSEHOLD PROFILE

114. How long have you lived in Franklin?	1987		1996		2000		2006	
Less than 1 year	255	10%	424	12%	416	8%	500	8%
1 - 5 years	678	26%	1,348	37%	2,102	41%	1,976	30%
6 - 10 years	300	11%	562	15%	935	18%	1,496	23%
Over 10 years	735	28%	859	23%	1,161	23%	1,964	30%
All of my life	645	25%	462	13%	444	9%	536	8%
No response	*	*	29	1%	34	1%	100	2%

115. How long have you lived in your present dwelling?	1987		1996		2000		2006	
Less than 1 year	447	18%	639	17%	640	13%	771	12%
1 - 5 years	887	36%	1,748	47%	2,636	52%	2,801	43%
6 - 10 years	375	15%	535	15%	852	17%	1,390	21%
Over 10 years	715	29%	693	19%	902	18%	1,468	22%
All of my life	54	2%	39	1%	32	1%	41	1%
No response	*	*	30	1%	30	1%	101	2%

HOUSEHOLD PROFILE CONTINUED

116. Where did you live before moving to Franklin?	1987		1996		2000		2006	
Have always lived in Franklin	481	19%	373	10%	359	7%	455	7%
Brentwood	110	4%	238	6%	407	8%	552	8%
Fairview	10	0%	17	0%	18	0%	25	0%
Rural Williamson County	382	15%	327	9%	313	6%	288	4%
Nashville/Davidson County	497	19%	708	19%	1,132	22%	1,361	21%
Spring Hill	17	1%	21	1%	31	1%	80	1%
Other area in Tennessee	368	14%	419	11%	599	12%	899	14%
<i>West Tennessee Counties</i>	*	*	*	*	*	*	210	
<i>Middle Tennessee Counties</i>	*	*	*	*	*	*	426	
<i>East Tennessee Counties</i>	*	*	*	*	*	*	201	
<i>In Tennessee but none specified</i>	*	*	*	*	*	*	62	
Outside of Tennessee	722	28%	1,512	41%	2,135	42%	2,671	41%
<i>Western United States</i>	*	*	*	*	*	*	286	
<i>Midwestern United States</i>	*	*	*	*	*	*	677	
<i>Southeastern United States</i>	*	*	*	*	*	*	1,138	
<i>Northeastern United States</i>	*	*	*	*	*	*	335	
<i>Outside of Tennessee but none specified</i>	*	*	*	*	*	*	186	
<i>Outside United States</i>	*	*	*	*	*	*	49	
No response	*	*	69	2%	98	2%	241	4%

HOUSEHOLD PROFILE CONTINUED

**117. Why did you move to Franklin?	1987		1996		2000		2006	
Have always lived here	462	17%	390	11%	360	7%	414	4%
Desired to leave a larger city	174	6%	202	5%	590	12%	579	6%
Small town, historic atmosphere	684	25%	886	24%	2,089	41%	2,197	22%
New job	659	24%	1,256	34%	1,983	39%	2,286	23%
Quality of schools	*	*	*	*	999	20%	1,732	17%
To live closer to family	297	11%	330	9%	708	14%	1,196	12%
Retirement	*	*	*	*	*	*	530	5%
Other (specify _____)	*	*	*	*	*	*	1,200	12%
<i>Quality of life</i>	*	*	*	*	*	*	283	
<i>Conveniences</i>	*	*	*	*	*	*	211	
<i>Job transfer</i>	*	*	*	*	*	*	184	
<i>New home purchase/downsizing home</i>	*	*	*	*	*	*	119	
<i>Marriage/divorce</i>	*	*	*	*	*	*	85	
<i>Family and friends</i>	*	*	*	*	*	*	69	
<i>More affordable</i>	*	*	*	*	*	*	60	
<i>Liked neighborhood</i>	*	*	*	*	*	*	47	
<i>Schools</i>	*	*	*	*	*	*	29	
<i>Good investment</i>	*	*	*	*	*	*	26	
<i>Hurricane Katrina</i>	*	*	*	*	*	*	13	
<i>Close to music industry</i>	*	*	*	*	*	*	10	
<i>Other</i>	428	16%	489	13%	51	1%	64	

DEMOGRAPHICS

118. Highest educational level of head of household:	1987		1996		2000		2006	
K-8	980	20%	84	2%	47	1%	31	0%
9-12	544	11%	146	4%	110	2%	124	2%
High school graduate or GED	1,739	35%	437	12%	423	8%	465	7%
Some college	*	*	801	22%	916	18%	1,160	18%
College graduate	1,730	35%	1,351	37%	2,042	40%	2,700	41%
Graduate school or professional school	*	*	816	22%	1,458	29%	1,959	30%
No response	4,993	100%	49	1%	96	2%	133	2%

119. Indicate the number of children under 18 who live in your household	1987		1996		2000		2006	
0	*	*	1,854	50%	2,479	49%	4,113	63%
1-2	*	*	1,370	37%	1,697	33%	2,022	31%
3-4	*	*	239	6%	308	6%	410	6%
5	*	*	5	0%	8	0%	8	0%
>5	*	*	3	0%	6	0%	6	0%

ADDITIONAL COMMENTS

120. Please state the most important issues to the members of your household about the future growth and appearance of Franklin. Also, for the items for which you checked "Dissatisfied," or "Very Dissatisfied," in the previous sections, provide examples or suggestions for improvements.	1987		1996		2000		2006	
Comments on water	*	*	*	*	521	13%	196	6%
<i>Poor quality/needs improvement</i>	*	*	*	*	*	*	106	
<i>Stormwater/drainage issues</i>	*	*	*	*	141	3%	90	
Comments on growth	*	*	*	*	479	12%	592	18%
<i>Too fast/need to control</i>	*	*	*	*	*	*	303	
<i>Want to maintain "small town" charm/character</i>	*	*	*	*	198	5%	206	
<i>Positive</i>	*	*	*	*	*	*	34	
<i>Lower and middle class neglect</i>	*	*	*	*	*	*	26	
<i>Immigration issues</i>	*	*	*	*	*	*	23	
Comments on traffic	*	*	*	*	484	12%	909	28%
<i>Infrastructure/need for new roads, sidewalks</i>	*	*	*	*	479	12%	427	
<i>Congestion/delays</i>	*	*	*	*	*	*	352	
<i>Street conditions</i>	*	*	*	*	*	*	130	
<i>Noise</i>	*	*	*	*	*	*	20	
Comments on city leadership/administration/employees	*	*	*	*	*	*	205	6%
<i>Positive</i>	*	*	*	*	*	*	45	
<i>Negative</i>	*	*	*	*	*	*	146	
<i>Need more citizen participation</i>	*	*	*	*	*	*	14	
Comments on development	*	*	*	*	495	12%	265	8%
<i>Housing is not affordable</i>	*	*	*	*	*	*	154	
<i>Residential lot sizes are too small/close together</i>	*	*	*	*	*	*	33	
<i>Good design/planning</i>	*	*	*	*	*	*	22	
<i>Bad design/planning</i>	*	*	*	*	*	*	56	
Comments on schools	*	*	*	*	313	8%	108	3%
<i>High quality of education</i>	*	*	*	*	*	*	35	
<i>Rezoning issues</i>	*	*	*	*	*	*	21	
<i>Too crowded/can't keep up</i>	*	*	*	*	*	*	52	

ADDITIONAL COMMENTS CONTINUED

120. Continued. Please state the most important issues to the members of your household about the future growth and appearance of Franklin. Also, for the items for which you checked "Dissatisfied," or "Very Dissatisfied," in the previous sections, provide examples or suggestions for improvements.	1987		1996		2000		2006	
	*	*	*	*				
Comments on Parks	*	*	*	*	142	3%	64	2%
<i>Positive</i>	*	*	*	*	*	*	29	
<i>Negative</i>	*	*	*	*	*	*	12	
Comments on history	*	*	*	*	*	*	165	5%
<i>Support property acquisition/preservation</i>	*	*	*	*	*	*	61	
<i>Do not support property acquisition/preservation</i>	*	*	*	*	*	*	104	
Comments on appearance of city	*	*	*	*	*	*	118	4%
<i>Good/cleanliness</i>	*	*	*	*	*	*	22	
<i>Bad/litter</i>	*	*	*	*	*	*	96	
Comments on city services	*	*	*	*	*	*	162	5%
<i>Stricter code enforcement</i>	*	*	*	*	*	*	56	
<i>Need for better city services/recycling, trash, etc.</i>	*	*	*	*	*	*	106	
Comments on quality of life	*	*	*	*	*	*	147	5%
<i>Good</i>	*	*	*	*	*	*	118	
<i>Bad</i>	*	*	*	*	*	*	29	
Comments on police protection	*	*	*	*	*	*	126	4%
<i>Good</i>	*	*	*	*	*	*	13	
<i>Bad</i>	*	*	*	*	*	*	39	
<i>Need better traffic enforcement</i>	*	*	*	*	*	*	61	
<i>Concern of crime increase</i>	*	*	*	*	*	*	13	
Other comments	*	*	*	*	818	20%	149	5%
<i>Need for better public transportation</i>	*	*	*	*	*	*	79	
<i>Need a performing arts center</i>	*	*	*	*	*	*	11	
<i>Taxes are too high/improperly used</i>	*	*	*	*	*	*	36	
<i>Other</i>	*	*	*	*	*	*	23	