

RESOLUTION 2014-23

TO BE ENTITLED: "A RESOLUTION APPROVING LEAF COLLECTION ON PRIVATE STREETS WITHIN THE CITY LIMITS."

WHEREAS, for over 30 years the City of Franklin has provided its citizens with curbside leaf collection service on all public streets; and

WHEREAS, the City collects leaves on public streets from early October through January; and

WHEREAS, the City has been requested by several citizens to collect leaves on private streets within the City limits; and

WHEREAS, the Board of Mayor and Aldermen believes that extending leaf collection to private streets within the City limits is in the best interest of the City of Franklin.

NOW THEREFORE BE IT RESOLVED by the Board of Mayor and Aldermen for the City of Franklin, Tennessee that:

SECTION I. The City Street Department is authorized to collect leaves on private streets and/or within gated communities within the City limits when requested by citizens.

SECTION II. Should a private gated community desire to have the City collect leaves on its private streets, a representative from the community residents association shall contact the Director of the Street Department to provide the City with any access code required for the City to enter the community to perform such leaf collection.

IT IS SO RESOLVED AND DONE on this ___ day of _____, 2014.

ATTEST:

CITY OF FRANKLIN, TENNESSEE

By: _____
ERIC S. STUCKEY
City Administrator

By: _____
DR. KEN MOORE
Mayor

Approved as to Form

By: _____
Kristen L. Corn
Staff Attorney




HISTORIC
FRANKLIN
TENNESSEE

ITEM #8
WRKS
02/25/14

MEMORANDUM

February 14, 2014

TO: Board of Mayor and Aldermen

FROM: Eric Stuckey, City Administrator 
Joe York, Director of Street Department
Steve Grubb, Asst. Director of Street Department

SUBJECT: Curbside Leaf Collection – private streets

Purpose

The purpose of this memorandum is to provide the Board of Mayor and Aldermen (BOMA) with information to consider extending curbside leaf collection service to residents within the private and gated communities throughout the City of Franklin.

Background

The City of Franklin has for over 30 years provided for its citizens a curbside leaf collection service on all public streets. At its inception, the collection season operated from early October until the end of December until the mid-2000's when due to public requests the collection season was extended one additional month through January, which continues to be standard practice to the present.

A collection season will last 18 weeks and excluding holidays will provide a minimum 80 scheduled work days. Inclement weather conditions (Rain, Freezing Rain, or Snow) could reduce the total number of available days. Throughout the leaf collection season, the Streets Department will utilize five (5) collection units and fifteen (15) employees with expenditures of approximately \$110,000 of scheduled labor and approximately \$35,000 in fuel cost. Each season the department will experience a peak period for collection lasting approximately from late October to mid-December (a 6 week period), with an expenditure of approximately \$16,000 in overtime.

In the past two seasons, the department has experienced a 35% to 40% increase in total leaf collection volume of between 2,500 to 3,500 Cubic Yards each year. The total volume collected for FY13 was 9,100 Cubic Yards. The increase in volume is believed to have occurred due to the greater public awareness of the program and availability of the Leaf Collection map posted on the Franklntn.gov website along with ever maturing trees through Franklin neighborhoods. Attached is a map of the collection areas and a pamphlet that explains the leaf collection program.

Recently, the City received a request from a citizen who resides on a private street requesting the provision of leaf pick-up in his neighborhood. Staff has reviewed neighborhoods throughout the City that have private streets. Attached is a list of 14 residential communities with private streets (many are gated communities) that currently do not receive seasonal leaf collection services. Collectively, these neighborhoods with private streets will add approximately 40 lane miles to the leaf collection service. It is estimated that these areas will produce approximately 80 additional truckloads generating between 960 and 1,040 cubic yards of leaves. Currently, these citizens can have their leaves picked up through the City's weekly Sanitation and Environmental Services Department by using brown yard waste bags.

It is the assessment of the Street Department that the City's leaf collection efforts are at or near full capacity in terms of equipment and staff time. Adding collection areas will require both additional equipment and staff time. In terms of equipment, there are two primary options: 1) new Dump Truck (\$90,000), Container Box (\$5,000),



HISTORIC
FRANKLIN
TENNESSEE

MEMORANDUM

Leaf Vac. Machine (\$24,000), a total of \$119,000; 2) a specialized vacuum truck is also being considered at a cost of \$200,000 that can provide both leaf pick-up and storm sewer clean-out throughout the year. This specialized vacuum truck would be eligible for funding through the Stormwater Fund. Ongoing operational costs include an estimated additional fuel cost of \$5,500 and staffing costs of \$37,000 (includes additional overtime).

Financial Impact

It is estimated that the private and gated communities will produce a volume of 950 to 1040 Cubic Yards, requiring an additional purchase of equipment ranging from \$119,000 to \$200,000 and ongoing operational costs include an estimated additional fuel cost of \$5,500 and staffing costs of \$37,000 (includes additional overtime). Should the Board direct that these services be provided to residents on private streets, these costs would need to be incorporated in future budgets.

Options

The Board could:

1. Continue to provide leaf collection services only in neighborhoods with public streets. Residents on private streets would need to continue to rely on yard waste (brown bag) pick up only for leaf disposal.
2. Expand the leaf collection program to residential neighborhoods with private streets in the same manner as is currently provided on public streets (weekly pick-up).
3. Expand leaf collection to private streets on a limited basis, providing collection less frequently than on public streets such as twice per month as opposed to weekly pick-up.

Recommendation

Board direction is sought on this issue.



HISTORIC
FRANKLIN
TENNESSEE

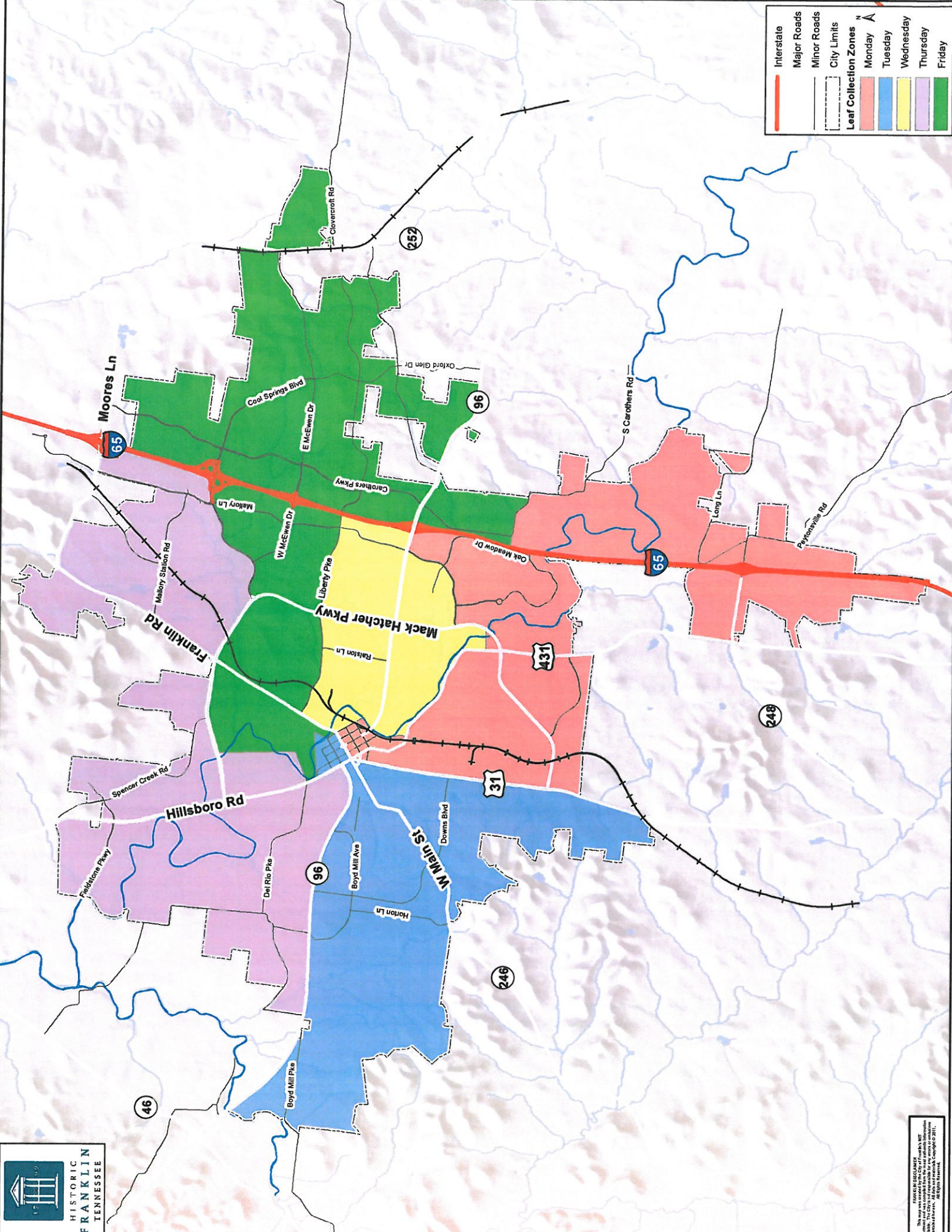
MEMORANDUM

PRIVATE-GATED COMMUNITIES

- 1) ASHTON PARK
- 2) AVALON
- 3) THE HAMLET OF AVALON
- 4) THE MEADE OF AVALON
- 5) BURGLEY PLACE
- 6) CARLISLE
- 7) THE ENCLAVE @ CARRONBRIDGE
- 8) MILLGATE
- 9) THE RESERVE @ SPENCER CREEK
(Located at Fieldstone Farms)
- 10) TREEMONT

PRIVATE COMMUNITIES

- 1) MAYTIME @ Fieldstone Farms
- 2) PRESCOTT PLACE @ Fieldstone Farms
- 3) TRENT PARK @ Fieldstone Farms
- 4) WINDSOR PARK @ Fieldstone Farms



THIS MAP WAS PREPARED BY THE HISTORIC FRANKLIN TENNESSEE COMMISSION. THE COMMISSION IS A PUBLIC BODY AND IS NOT A GOVERNMENT AGENCY. THE COMMISSION IS NOT RESPONSIBLE FOR ANY ERRORS OR OMISSIONS. ALL RIGHTS RESERVED.

Leaf Collection Options

The City of Franklin offers two collection options to meet the needs of its residents. Biodegradable Paper Bag Collection and the Bulk Loose Leaf Collection program.

Option One: Biodegradable Paper Bag Collection

Curbside collection of biodegradable paper bags containing leaves, grass clippings, small twigs and shrub trimmings are collected weekly throughout the year by the Solid Waste Department on your regularly scheduled Trash pickup day. Please place the biodegradable paper bags at least five (5) feet from your roll-out container.

Please do not place stones, rocks, dirt or Household Waste inside the Biodegradable Paper Bag.

On Holiday weeks, the Solid Waste Department, may or may not collect yard waste and brush. Please contact the Solid Waste Department concerning their Holiday work schedule at (615) 794-1516 between the hours of 7:00 am and 4:00 pm (Monday through Friday) or at www.franklin.tn.gov

Option Two: Bulk Loose Leaf Collection

Each year beginning on October 1st until the following January 31st the Street Department provides residents with an alternative way to dispose of their leaves. Using specialized mechanical equipment, Street Department crews collect leaves from the curbside.

The City of Franklin is divided into five (5) Collection Zones, with each zone having a scheduled day of the week for collection. (Please see the map on the reverse side of this handout for your neighborhoods scheduled collection day).

Monday: RED Zone
Tuesday: BLUE Zone
Wednesday: YELLOW Zone
Thursday: PURPLE Zone
Friday: GREEN Zone

Special Notes:

On the day of collection leaves should be raked curbside by 6:30 am. Please rake leaf piles as close to the streets edge as possible.

Please do not place leaves on or atop of storm drains.

Please do not park vehicles atop of leaf piles; this will result in a delay of collection.

Place only leaves in leaf piles. Items such as branches, tree limbs, twigs, rocks, Halloween decorations (Corn Stalks and pumpkins) can

cause equipment breakdowns. Leaf piles that contain these items will be left behind. Please contact the Solid Waste department for questions concerning the proper disposal of these items.

The week of Thanksgiving the Street Department will be closed on Thursday and Friday. Residents living in Purple & Green Zones can expect their leaves to be collected the following week.

Leaf volume and weather uncertainties make it impossible to guarantee leaf collection on a specific day, but every effort to safely do so will be made.

Should you have questions concerning your collection day or where to place leaf piles for collection please contact the Street Department at (615) 791-3254 between the hours of 7:00 am to 4:00 pm (Monday through Friday) or at www.franklin.tn.gov