

**RESOLUTION 2013-74**

**A RESOLUTION TO BE ENTITLED: "A RESOLUTION TO AMEND THE ESTIMATE OF REVENUES AND EXPENDITURES FOR THE WATER AND SANITARY SEWER UTILITY FUND RELATIVE TO THE CITY OF FRANKLIN ORGANIZATION AND PERSONNEL CHARTS. RELATIVE TO THE CITY OF FRANKLIN POSITION TABLE ORGANIZATION CHART AND PAY STRUCTURE."**

**WHEREAS**, the Board of Mayor and Aldermen established the Estimate of Revenues and Expenditures for the Water and Sanitary Sewer Utility Fund for the fiscal year 2013-14, by Resolution 2013-51, effective August 13, 2013; and

**WHEREAS**, on August 27, 2013 the Board of Mayor and Aldermen adopted a revised Position Classification Plan and Pay Plan through Resolution 2013-45; and

**WHEREAS**, the job titles and pay grades for City employees were previously in numerical categories, and the new Position Classification Plan and Pay Plan reduced the number of pay grades and changed the categories from a numeric system to an alphabetic system; and

**WHEREAS**, the new Position Classification Plan and Pay Plan also included adjustments to several job titles; and

**WHEREAS**, the Organizational and Personnel Charts within the FY 2013-14 Estimate of Revenues and Expenditures for the Water and Sanitary Sewer Utility Fund for the City and the Water and Sanitary Sewer Utility Fund must be modified to reflect the changes resulting from the adopted Position Classification Plan and Pay Plan; and

**WHEREAS**, the Board of Mayor and Aldermen desires to amend the FY 2013-14 Estimate of Revenues and Expenditures for the Water and Sanitary Sewer Utility Funds to adopt the amended Organizational and Personnel Charts.

**NOW, THEREFORE, BE IT RESOLVED**, by the Board of Mayor and Aldermen for the City of Franklin as follows:

**Section 1.** The City of Franklin hereby adopts the amended Organizational and Personnel Charts, to be incorporated within the FY 2013-14 Estimate of Revenues and Expenditures for the Water and Sanitary Sewer Utility Fund, as shown in Exhibit A, attached. The page numbers on the bottom of the pages in Exhibit A correspond to the page numbers to be replaced in the FY 2013-14 Estimate of Revenues and Expenditures for the Water and Sanitary Sewer Utility Fund.

**Section 2.** That this Resolution shall be effective upon adoption.

IT IS SO RESOLVED AND DONE on this \_\_\_\_ day of December, 2013.

ATTEST:

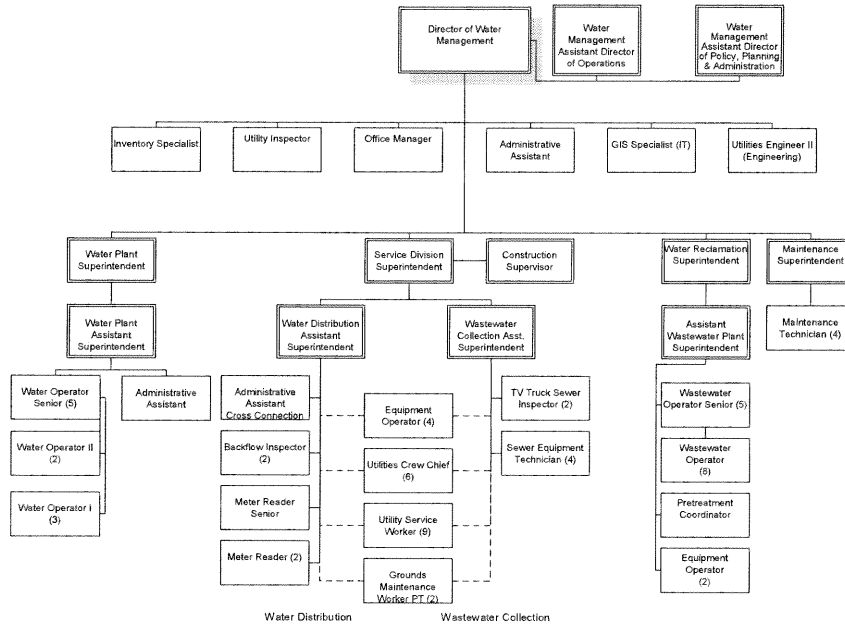
CITY OF FRANKLIN, TENNESSEE

BY:

\_\_\_\_\_  
**ERIC S. STUCKEY**  
City Administrator

BY:

\_\_\_\_\_  
**DR. KEN MOORE**  
Mayor



**WATER SECTION - Proposed Personnel**

**UTILITY BILLING**

POSITION	PAY GRADE	ANTICIPATED PAY GRADE	BUDGETED FY 2012	BUDGETED FY 2013	AMENDED FY 2013	BUDGETED FY 2014	BUDGETED FY 2015
Meter Reader Sr	10	C	1	1	1	1	1
Meter Reader	9	B	2	2	2	2	2
<b>TOTALS</b>			<b>3</b>	<b>3</b>	<b>3</b>	<b>3</b>	<b>3</b>

**WATER DISTRIBUTION**

POSITION	PAY GRADE	ANTICIPATED PAY GRADE	BUDGETED FY 2012 FULL-TIME	BUDGETED FY 2013 FULL-TIME	AMENDED FY 2013 FULL-TIME	BUDGETED FY 2014	BUDGETED FY 2015
Service Division Superintendent	20	I	1	1	1	1	1
Water Distribution Assistant Superintendent	19	G	1	1	1	1	1
Utilities Crew Chief	13	E	3	3	3	3	3
Backflow Inspector	16	E	2	2	2	2	2
Administrative Assistant	12	D	1	1	1	1	1
Inventory Specialist	12	D	1	1	1	1	1
Equipment Operator	11	D	2	3	2	2	2
Utility Service Worker	10	C	4	5	4	4	4
<b>TOTALS</b>			<b>15</b>	<b>17</b>	<b>15</b>	<b>15</b>	<b>15</b>

**WATER TREATMENT PLANT**

POSITION	PAY GRADE	PAY GRADE	BUDGETED	BUDGETED	AMENDED FY	BUDGETED FY 2014	BUDGETED FY 2015
			ANTICIPATED FY 2012 FULL- TIME	FY 2013 FULL- TIME	2013 FULL- TIME		
Water Treatment Superintendent	20	H	1	1	1	1	1
Water Treatment Assistant Superintendent	19	G	1	1	1	1	1
Water Operator Sr	16	E	5	5	5	5	5
Water Operator 2	13	TBD	2	2	2	2	2
Administrative Assistant	12	D	1	1	1	1	1
Water Operator 1	11	D	3	3	3	3	3
<b>TOTALS</b>			<b>13</b>	<b>13</b>	<b>13</b>	<b>13</b>	<b>13</b>
<b>WATER SECTION TOTALS</b>			<b>31</b>	<b>33</b>	<b>31</b>	<b>31</b>	<b>31</b>

**WASTEWATER SECTION - Proposed Personnel****UTILITY ADMINISTRATION**

POSITION	PAY GRADE	PAY GRADE	BUDGETED	BUDGETED	AMENDED FY	BUDGETED FY 2014	BUDGETED FY 2015
			ANTICIPATED FY 2012 FULL- TIME	FY 2013 FULL- TIME	2013 FULL- TIME		
Director	25	L	1	1	1	1	1
Assistant Director of Operations	23	J	1	1	1	1	1
Assistant Director of Administration and Policy	23	J	0	0	1	1	1
GIS Analyst	17	E	1	1	1	1	1
Administrative Assistant	12	D	1	1	1	1	1
Utility Inspector	17	F	3	3	3	3	3
Secretary	9	-	1	1	1	0	0
Office Manager	16	F	0	0	0	1	1
Utilities Engineer II	21	H	1	1	1	1	1
Grounds Worker (Seasonal)	9	B	0	0	0	2	2
<b>TOTALS</b>			<b>9</b>	<b>9</b>	<b>10</b>	<b>12</b>	<b>12</b>

**WASTEWATER COLLECTION**

POSITION	PAY GRADE	PAY GRADE	BUDGETED	BUDGETED	AMENDED FY	BUDGETED FY 2014	BUDGETED FY 2015
			ANTICIPATED FY 2012 FULL- TIME	FY 2013 FULL- TIME	2013 FULL- TIME		
Wastewater Collection Assistant Superintendent	19	G	1	1	1	1	1
Construction Supervisor	16	TBD	1	1	1	1	1
TV Truck Sewer Inspector	15	D	2	2	2	2	2
Lift Station Technician	14	E	4	4	0	0	0
Utilities Crew Chief	13	E	4	4	4	3	3
Equipment Operator	11	D	2	2	2	2	2
Sewer Equipment Technician	11	D	4	4	4	4	4
Utility Service Worker	10	C	5	5	5	5	5
<b>TOTALS</b>			<b>23</b>	<b>23</b>	<b>19</b>	<b>18</b>	<b>18</b>

**WATER RECLAMATION**

POSITION	PAY GRADE	PAY GRADE	BUDGETED	BUDGETED	AMENDED FY	BUDGETED FY 2014	BUDGETED FY 2015
			ANTICIPATED FY 2012 FULL- TIME	FY 2013 FULL- TIME	2013 FULL- TIME		
Water Reclamation Superintendent	20	I	1	1	1	1	1
Assistant Water Reclamation Superintendent	19	G	1	1	1	1	1
Pretreatment Coordinator	17	F	1	1	1	1	1
Wastewater Operator Sr	16	E	3	3	3	5	5
Wastewater Maintenance Technician	14	E	1	1	0	0	0
Equipment Operator	12	D	2	2	2	2	2
Wastewater Operator 1	11	D	10	10	10	8	8
Secretary	9	-	1	1	1	0	0
<b>TOTALS</b>			<b>20</b>	<b>20</b>	<b>19</b>	<b>18</b>	<b>18</b>

**MAINTENANCE**

POSITION	PAY GRADE	PAY GRADE	BUDGETED	BUDGETED	AMENDED FY	BUDGETED FY 2014	BUDGETED FY 2015
			ANTICIPATED FY 2012 FULL- TIME	FY 2013 FULL- TIME	2013 FULL- TIME		
Maintenance Supervisor	19 EST	TBD	0	0	1	1	1
Maintenance Technician	14 EST	E	0	0	4	4	4
<b>TOTALS</b>			<b>0</b>	<b>0</b>	<b>5</b>	<b>5</b>	<b>5</b>

**WASTEWATER SECTION TOTALS**

<b>52</b>	<b>52</b>	<b>53</b>	<b>53</b>	<b>53</b>
-----------	-----------	-----------	-----------	-----------

**TOTAL WATER MANAGEMENT**

<b>83</b>	<b>85</b>	<b>84</b>	<b>84</b>	<b>84</b>
-----------	-----------	-----------	-----------	-----------