


MEMORANDUM

TO: Board of Mayor and Alderman

FROM: Eric Stuckey, City Administrator 
Shirley Harmon, Director of Human Resources

DATE: November 1, 2013

SUBJECT: Consideration of Revised Organizational Charts and Personnel Charts

Purpose

The purpose of this memorandum is to provide the Board of Mayor and Aldermen (BOMA) with information to consider a resolution that will revise organizational and personnel charts to be consistent with the actions taken earlier in the year adopting the City of Franklin's new compensation and classification plan.

Background

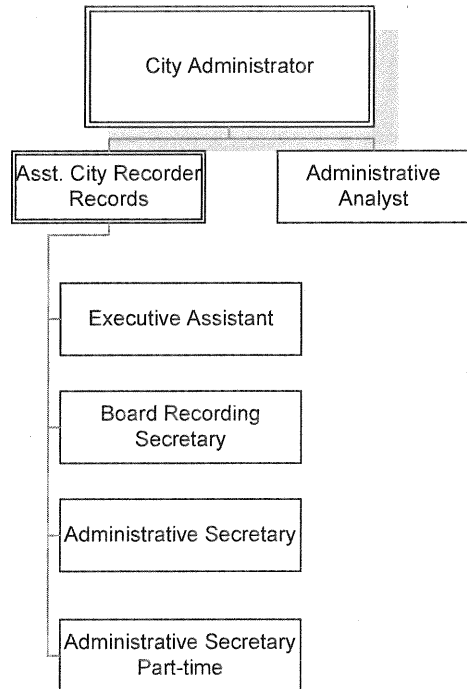
As a part of the budget process, the Board approves positions and the organizational structure of the City departments. Final budget approval takes place in June of each year prior to the start of the City's fiscal year on July 1st. Over the past year, the City completed Comprehensive Classification and Compensation Study. Through the study, various positions within the City organization were assigned new and more appropriate position titles. The departmental organizational charts were altered to reflect more accurate reporting and classification of positions, and all pay grades were changed for each position from a numeric system to an alpha system. These changes are a result of the recommendations from the City of Franklin Comprehensive Classification and Compensation Study and Resolution 2013-45 passed by the Board of Mayor and Aldermen on August 27, 2013.

Financial Impact

There is no financial impact in this resolution. The financial impact was recognized August 27, 2013, when Resolution 2013-45 was passed implementing the recommendations of the Comprehensive Classification and Compensation Study, resulting in the implementation of a new compensation plan. Resolution 2013-72 is for the correction of titles, organizational charts, and pay grade assignments only.

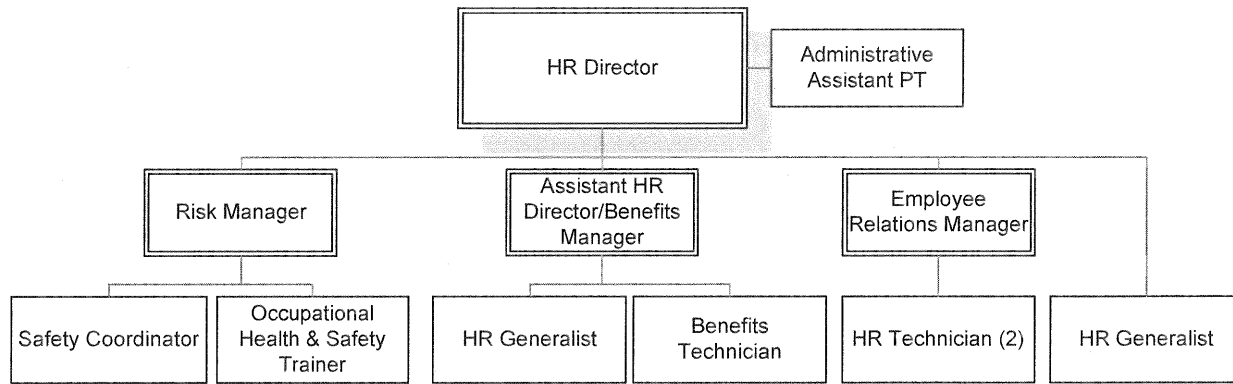
Recommendation

Staff recommends approval to clarify position titles, organizational charts, and the alpha pay grades.



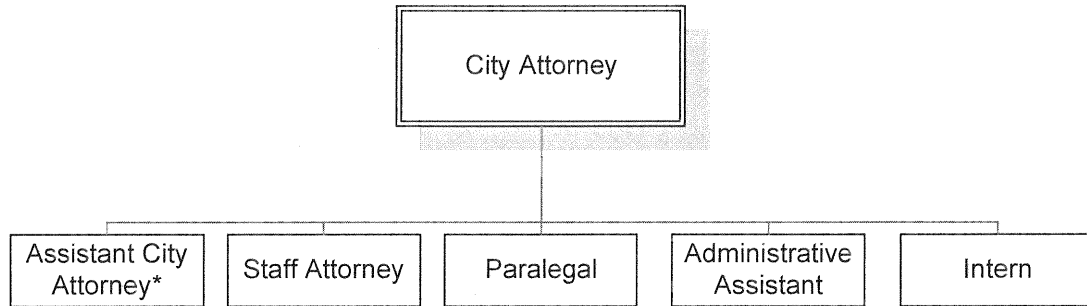
City of Franklin
 2013-2014 Fiscal Year Budget
 General Fund - Administration
 Personnel by Position

Position	Pay	FY 2013		Not Funded	Pay	FY 2014		Not Funded
	Grade	Full-Time	Part-Time		Grade	Full-Time	Part-Time	
City Administrator	28	1	0	0	P	1	0	0
Assistant City Recorder/Records	21	1	0	0	G	1	0	0
Executive Assistant	13	1	0	0	E	1	0	0
Recording Secretary to BOMA	12	1	0	0	C	1	0	0
Administrative Secretary	10	1	0	0	B	1	0	0
Administrative Secretary	10	0	1	0	B	0	1	0
Administrative Analyst (Internship)	TBD	0	0	0	TBD	1	0	0
	TOTALS	5	1	0	TOTALS	6	1	0



City of Franklin
 2013-2014 Fiscal Year Budget
 General Fund - Human Resources
 Personnel by Position

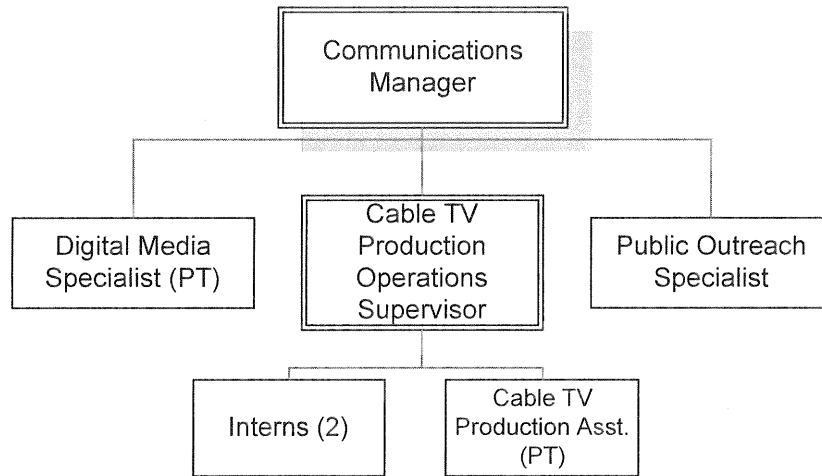
Position	Pay Grade	FY 2013		Pay Grade	FY 2014	
		Full-Time	Part-Time		Full-Time	Part-Time
Human Resources Director	25	1	0	L	1	0
Risk Manager	23	1	0	J	1	0
Human Resources Asst Dir/Benefits Mgr	---	0	0	K	1	0
Human Resources Asst Dir	22	1	0	---	0	0
Benefits Manager	21	1	0	J	0	0
Employee Relations Manager	20	1	0	I	1	0
Occupational Health/Safety Trainer	20	1	0	G	1	0
Safety Coordinator	TBD	0	0	G	1	0
Risk Analyst	18	1	0	G	0	0
Human Resources Generalist	---	0	0	F	2	0
Human Resources Analyst	19	1	0	F	0	0
Benefits Analyst	16	1	0	E	0	0
Benefits Technician	---	0	0	D	1	0
Human Resources Technician	12	2	0	D	2	0
Administrative Assistant	12	0	1	D	0	1
TOTALS		11	1	TOTALS	11	1



* = Unfunded

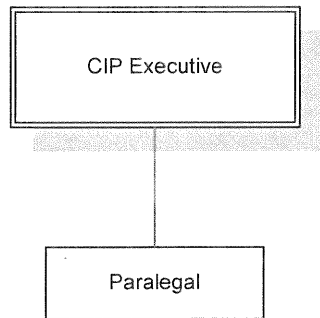
City of Franklin
 2013-2014 Fiscal Year Budget
 General Fund - Legal
 Personnel by Position

Position	Pay Grade	FY 2013			Pay Grade	FY 2014		
		Full-Time	Part-Time	Not Funded		Full-Time	Part-Time	Not Funded
City Attorney	25	1	0	0	M	1	0	0
Asst City Attorney	23	1	0	1	K	1	0	1
Staff Attorney	22	1	0	0	J	1	0	0
Paralegal	16	1	0	0	F	1	0	0
Administrative Assistant	12	0	0	0	D	1	0	0
Intern		0	1	0		0	1	0
	TOTALS	4	1	1	TOTALS	5	1	1



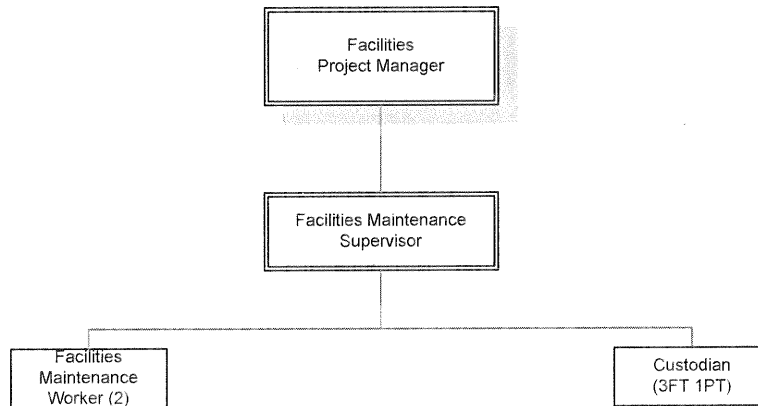
**City of Franklin
2013-2014 Fiscal Year Budget
General Fund - Communications
Personnel by Position**

Position	Pay Grade	FY 2013		Pay Grade	FY 2014	
		Full-Time	Part-Time		Full-Time	Part-Time
Communications Manager	22	1	0	I	1	0
Cable TV Production Operations Supervisor	---	0	0	G	1	0
Cable TV Coordinator	21	1	0	---	0	0
Public Outreach Specialist	21	1	0	G	1	0
Digital Media Specialist	16	0	1	C	0	1
Video/Production Assistant	13	0	1	B	0	1
Intern	---	0	3	---	0	2
TOTALS		3	5	TOTALS	3	4



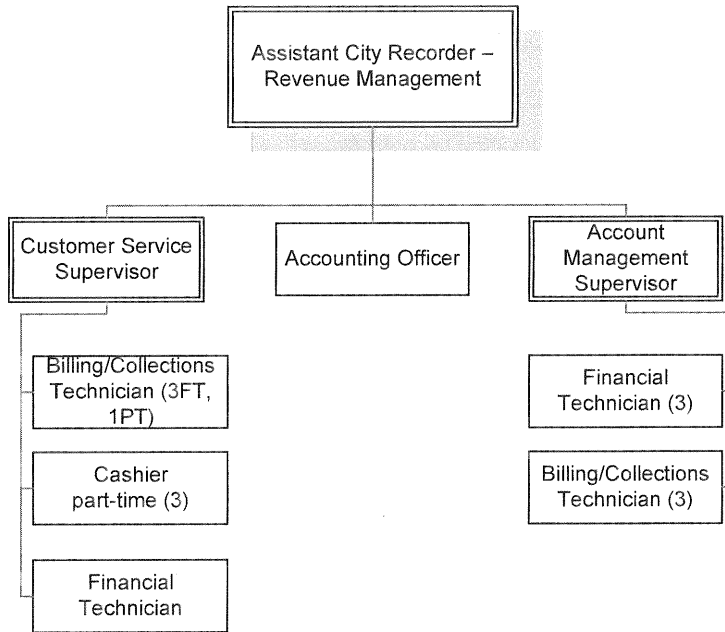
City of Franklin
 2013-2014 Fiscal Year Budget
 General Fund-Capital Investment Planning
 Personnel by Position

Position	Pay Grade	FY 2013		Pay Grade	FY 2014	
		Full-Time	Part-Time		Full-Time	Part-Time
City Engineer/CIP Executive	26	1	0	M	1	0
Paralegal	16	0	0	F	1	0
Administrative Assistant	12	0	1	D	0	0
	TOTALS	1	1	TOTALS	2	0



City of Franklin
 2013-2014 Fiscal Year Budget
 General Fund - Project & Facilities Management
 Personnel by Position

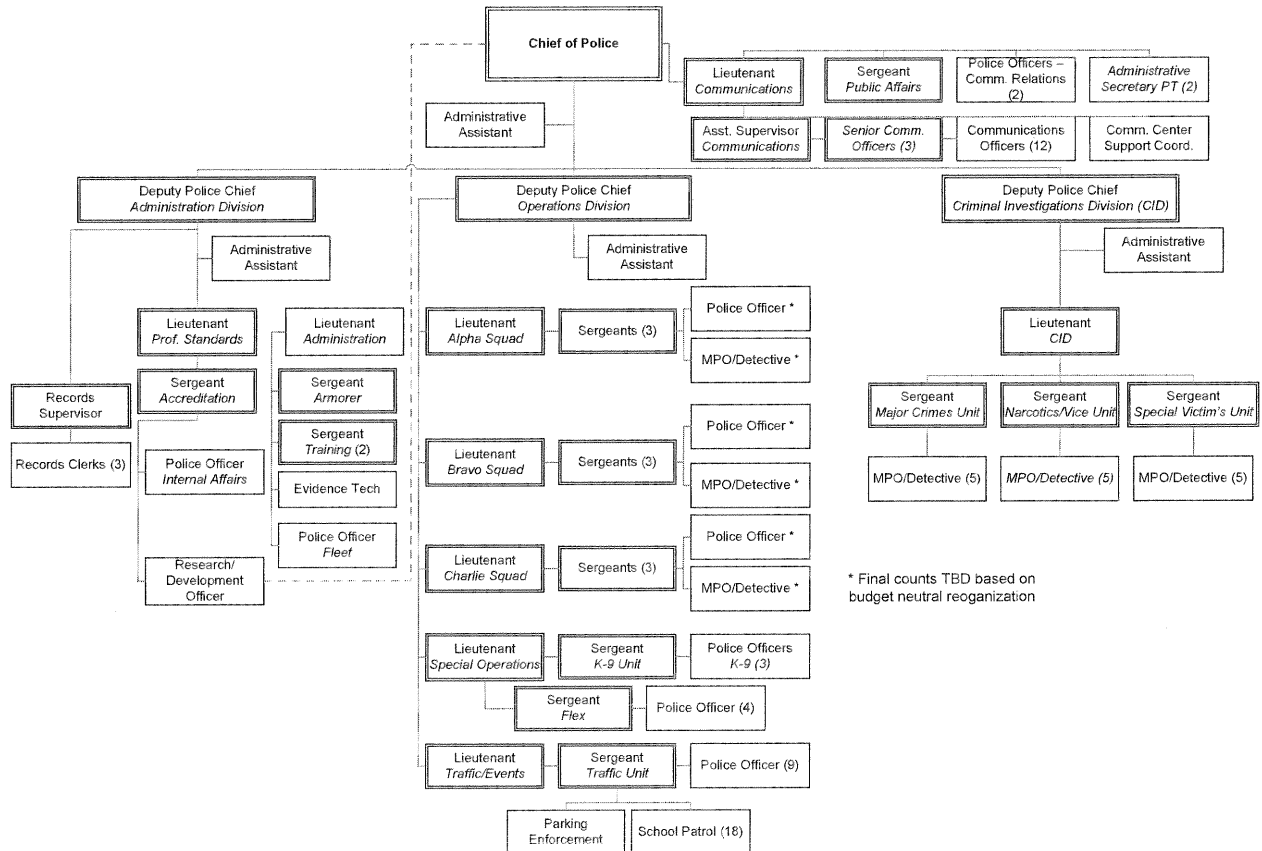
Position	Pay	FY 2013		Pay	FY 2014	
	Grade	Full-Time	Part-Time	Grade	Full-Time	Part-Time
Facilities Project Manager	22	1	0	I	1	0
Facilities Maintenance Supervisor	14	1	0	F	1	0
Facilities Maintenance Worker	10	1	0	C	2	0
Custodian	7	3	1	B	3	1
	TOTALS	6	1	TOTALS	7	1



City of Franklin
2013-2014 Fiscal Year Budget
General Fund - Revenue Management
Personnel by Position

Position	Pay Grade	FY 2013		Pay Grade	FY 2014	
		Full-Time	Part-Time		Full-Time	Part-Time
Business Process Improvement Mgr & City Court Clerk	21	1	0	H	0	0
Asst City Recorder - Revenue Mgmt	21	1	0	G	1	0
Account Management Supervisor	18	1	0	F	1	0
Customer Service Supervisor	18	1	0	F	1	0
Accounting Officer	17	1	0	E	1	0
Billing / Collection Supervisor	14	1	0	---	0	0
Financial Technician I	12	3	0	D	4	0
Billing & Collection Tech	12	6	1	C	6	1
Cashier	9	0	3	B	0	3
TOTALS		15	4	TOTALS	14	4

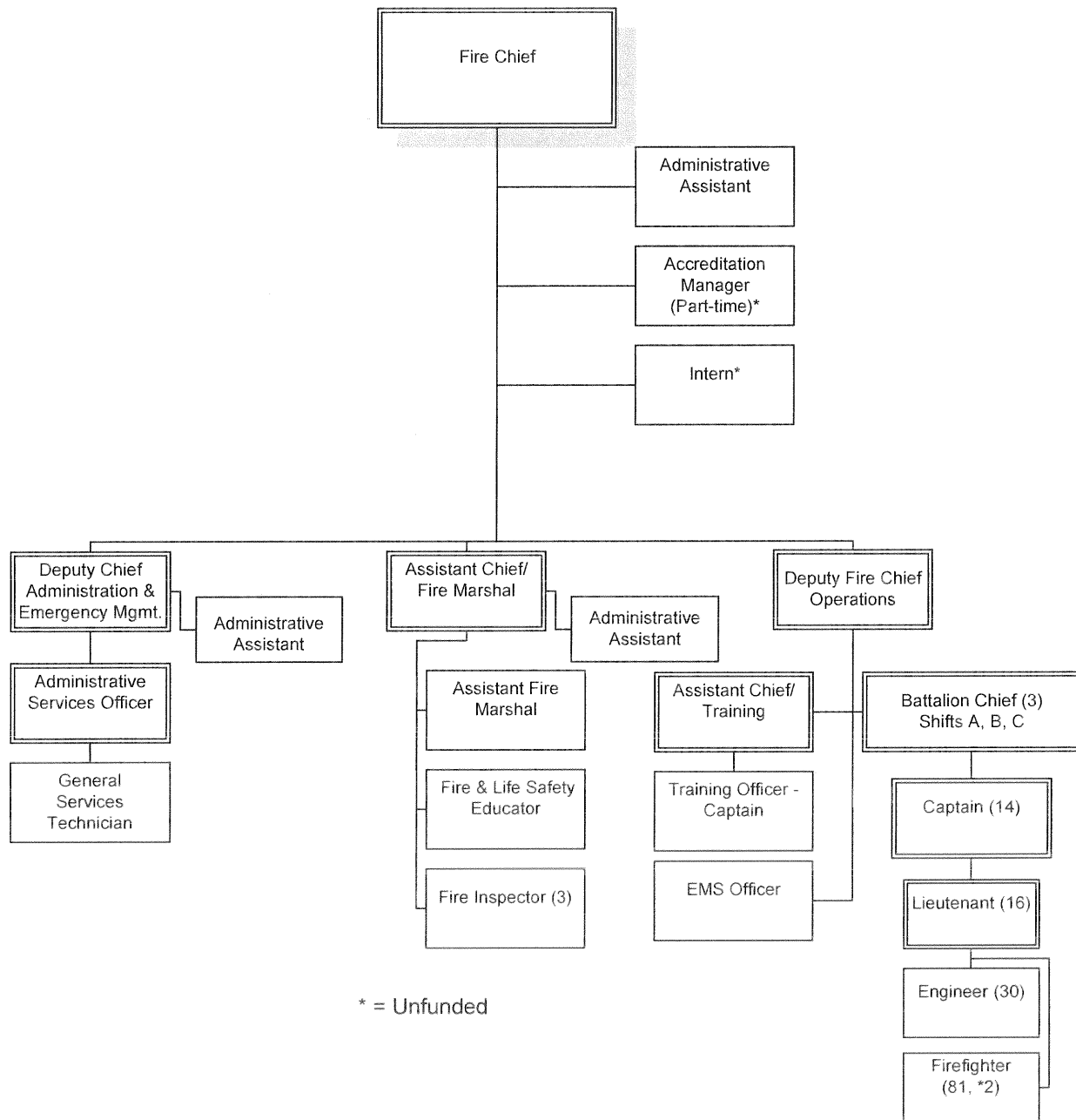
Note: 4 part-time positions are budgeted as equivalent to 2 FTE's.



City of Franklin
2013-2014 Fiscal Year Budget
General Fund - Police
Personnel by Position

Position	Pay	FY 2013			Pay	FY 2014		
	Grade	Full-Time	Part-Time	Not-Funded	Grade	Full-Time	Part-Time	Not-Funded
SWORN OFFICERS:								
Police Chief	25	1	0	0	M	1	0	0
Police Deputy Chief	23	3	0	0	K	3	0	0
Police Lieutenant	19	7	0	0	I	9	0	0
Police Sergeant	17	23	0	2	G	22	0	2
Detective/Master Patrol*	15	18	0	2	F	18	0	3
Police Officers*	13	92	0	11	E	92	0	12
Police Officer (Research & Dev)	13	1	0	0	E	1	0	0
ADMIN & COMMUNICATIONS:								
Asst Communications Supervisor	14	1	0	0	E	1	0	0
Records Supervisor	14	1	0	0	E	1	0	0
Sr. Communications Officer	12	3	0	0	E	3	0	0
Administrative Assistant	12	4	0	0	D	4	0	0
Comm Center Support Coord	12	1	0	0	D	1	0	0
Evidence Technician	12	1	0	0	D	1	0	0
Communications Officer	11	14	0	2	D	14	0	2
Administrative Secretary	10	0	2	0	B	0	2	0
Records Clerk	9	4	0	1	B	4	0	1
Parking Enforcement Officer	7	1	0	0	B	1	0	0
School Patrol (Part-Time)	---	0	18	0	---	0	18	0
TOTALS		175	20	18	TOTALS	176	20	20

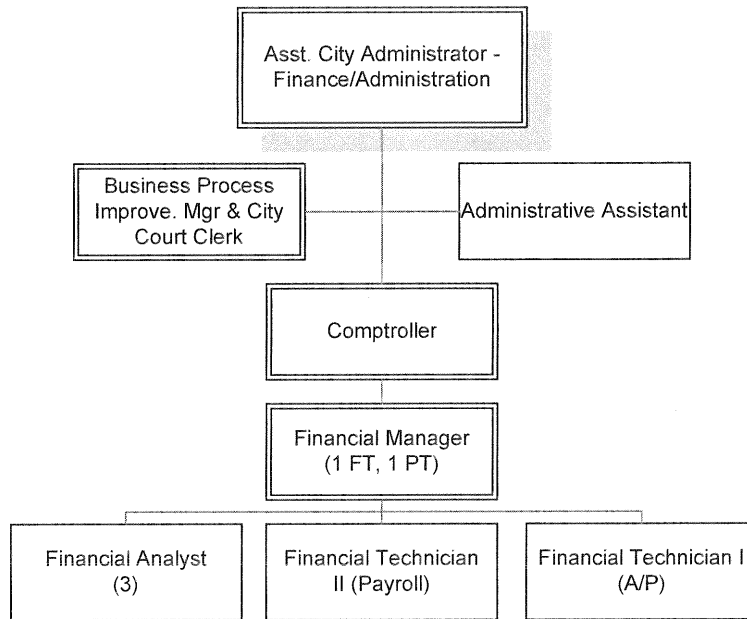
* Final counts to be determined based on budget neutral reorganization



* = Unfunded

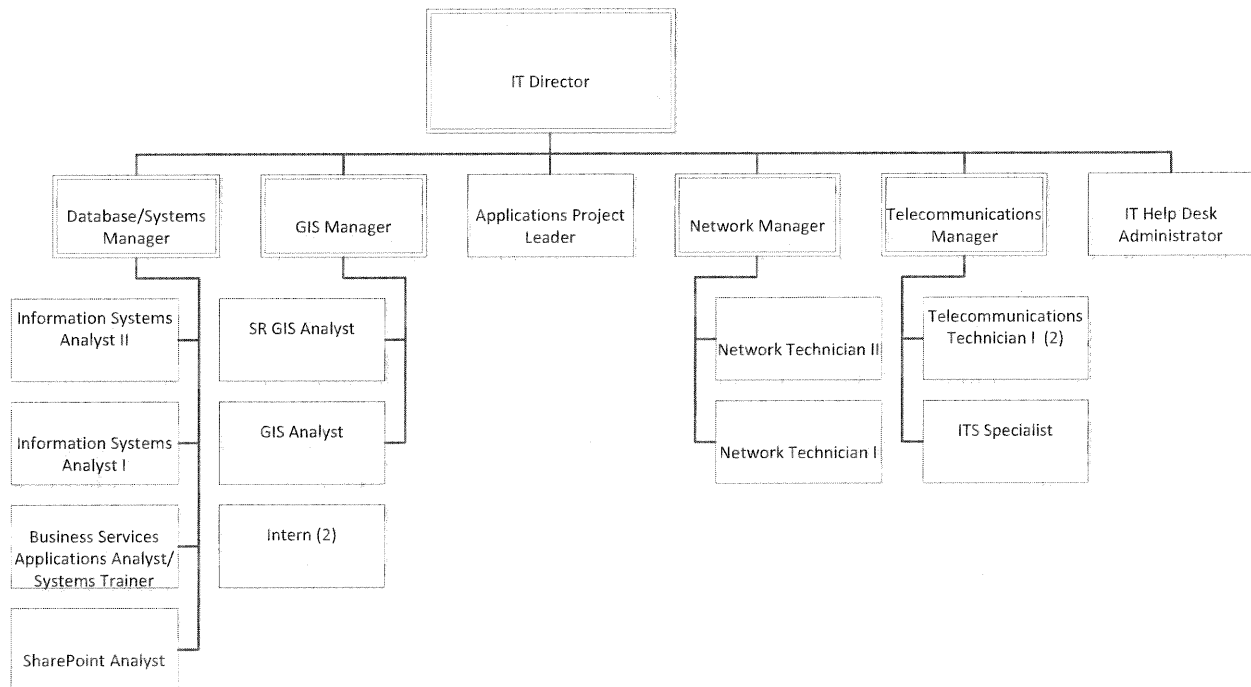
City of Franklin
2013-2014 Fiscal Year Budget
General Fund - Fire
Personnel by Position

Position	HR	Pay	FY 2013		Not Funded	Pay	FY 2014		Not Funded
	Code	Grade	Full-Time	Part-Time		Grade	Full-Time	Part-Time	
Fire Chief	1406	25	1	0	0	L	1	0	0
Fire Deputy Chief	1415	23	1	0	0	K	1	0	0
Fire Deputy Chief/Administration	1415	23	0	0	0	K	1	0	0
Assistant Chief/Administration	1401	21	1	0	0	J	0	0	0
Assistant Chief/Shift Commander	1401	21	3	0	0	---	0	0	0
Battalion Chief	1401	---	0	0	0	J	3	0	0
Assistant Chief/Training	TBD	21	1	0	0	J	1	0	0
Assistant Chief/ Fire Marshal	1420	21	1	0	0	J	1	0	0
EMS Officer	1419	20	1	0	0	I	1	0	0
Fire Captain	1404	19	14	0	0	I	14	0	0
Training Officer (Captain)	1411	19	1	0	0	I	1	0	0
Administrative Services Officer	1417	18	1	0	0	I	1	0	0
Assistant Fire Marshal	1412	17	1	0	0	H	1	0	0
Fire & Life Safety Educator	1421	17	1	0	0	G	1	0	0
Fire Lieutenant	1409	17	16	0	0	G	16	0	0
Fire Inspector	1418	16	2	0	0	G	3	0	0
Fire Engineer	1405	15	30	0	0	F	30	0	0
Firefighter	1407	13	81	0	2	E	81	0	2
Administrative Assistant	0016	12	3	0	0	D	3	0	0
General Services Technician	1416	9	1	0	0	D	1	0	0
Intern	0014	---	0	1	1	---	0	1	1
Accreditation Manager	TBD	---	0	1	1	TBD	0	1	1
		TOTALS	160	2	4	TOTALS	161	2	4



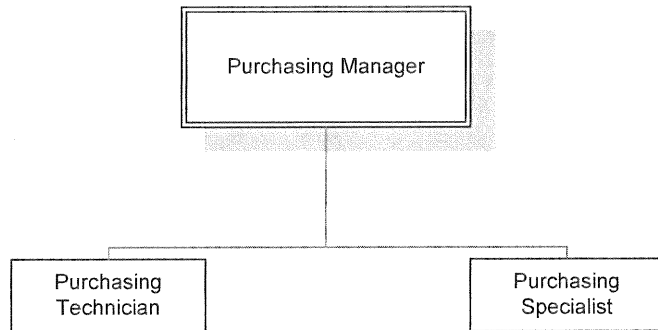
City of Franklin
2013-2014 Fiscal Year Budget
General Fund - Finance
Personnel by Position

Position	FY 2013				FY 2014			
	Pay Grade	Full-Time	Part-Time	Not Funded	Pay Grade	Full-Time	Part-Time	Not Funded
Asst City Administrator-Finance/Administration	26	1	0	0	N	1	0	0
Comptroller	23	1	0	0	K	1	0	0
Business Process Improvement Mgr & City Court Clerk	21	0	0	0	H	1	0	0
Financial Manager	19	1	1	0	H	1	1	0
Financial Analyst	17	3	0	0	F	3	0	0
Financial Technician II (Payroll Specialist)	---	0	0	0	E	1	0	0
Financial Technician I (A/P Specialist)	---	0	0	0	D	1	0	0
Financial Technician	12	2	0	0	D	0	0	0
Administrative Assistant	12	1	0	0	D	1	0	0
TOTALS		9	1	0	TOTALS	10	1	0



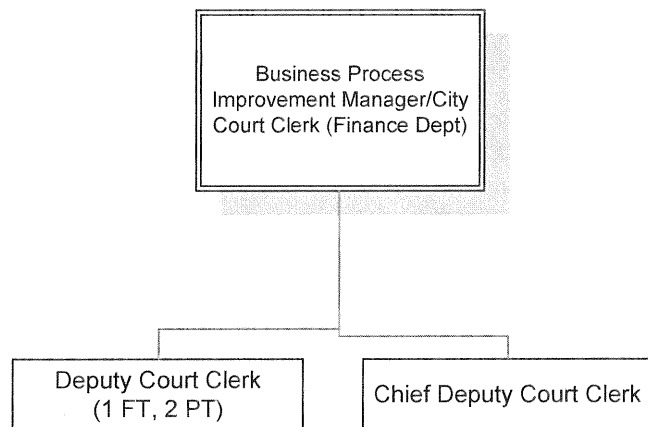
City of Franklin
2013-2014 Fiscal Year Budget
General Fund - IT
Personnel by Position

Position	Pay Grade	FY 2013			Pay Grade	FY 2014		
		Full-Time	Part-Time	Not Funded		Full-Time	Part-Time	Not Funded
IT Director	24	1	0	0	L	1	0	0
Applications Development Manager	22	1	0	1	TBD	1	0	1
Systems/Database Manager	22	1	0	0	J	1	0	0
Telecommunications Manager	---	0	0	0	J	1	0	0
Communications Services Manager	21	1	0	0	---	0	0	0
Applications Project Leader	---	0	0	0	J	1	0	0
Financial Applications Manager	21	1	0	0	---	0	0	0
Enterprise Applications Manager	20	1	0	1	TBD	1	0	1
Network Manager	20	1	0	0	J	1	0	0
GIS Manager	21	1	0	0	I	1	0	0
Sharepoint Analyst	---	0	0	0	H	1	0	0
Database Adm/Webmaster	21	1	0	0	---	0	0	0
Information Systems Analyst II	---	0	0	0	H	1	0	0
Public Safety Applications Manager	20	1	0	0	---	0	0	0
Business Services Appl Analyst/Systems Trainer	---	0	0	0	G	1	0	0
Business Services Application Manager	20	1	0	0	---	0	0	0
GIS Analyst Sr	19	2	0	0	G	1	0	0
Network Technician II	18	1	0	0	G	1	0	0
Telecommunication Technician II	---	0	0	0	G	0	0	0
ITS Specialist	17	0	0	0	F	1	0	0
Telecommunications Technician I	---	0	0	0	F	2	0	0
Communications Technician	16	2	0	0	---	0	0	0
Network Technician I	16	1	0	0	F	1	0	0
Information Systems Analyst I	---	0	0	0	F	1	0	0
Application Support Analyst	16	1	0	0	---	0	0	0
GIS Analyst	---	0	0	0	E	1	0	0
IT Help Desk Administrator	---	0	0	0	E	1	0	0
Help Desk Technician	13	1	0	0	---	0	0	0
Intern	---	0	2	0	---	0	2	0
TOTALS		19	2	2	TOTALS	20	2	2



City of Franklin
2013-2014 Fiscal Year Budget
General Fund - Purchasing
Personnel by Position

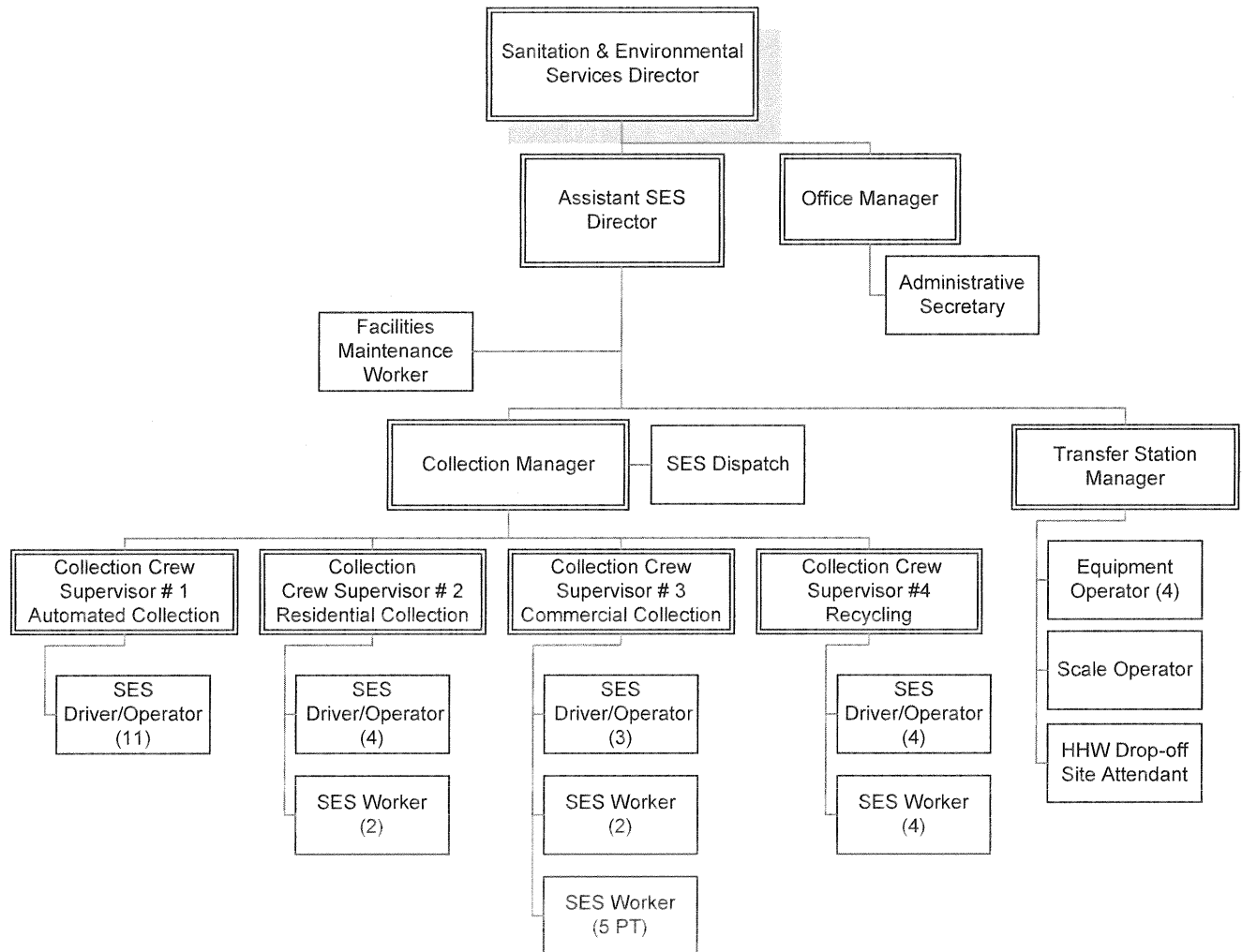
Position	Pay Grade	FY 2013		Pay Grade	FY 2014	
		Full-Time	Part-Time		Full-Time	Part-Time
Purchasing Manager	21	1	0	I	1	0
Purchasing Specialist	14	1	0	E	1	0
Purchasing Technician	12	1	0	C	1	0
	TOTALS	3	0	TOTALS	3	0



City of Franklin
 2013-2014 Fiscal Year Budget
 General Fund - Court
 Personnel by Position

Position	Pay	FY 2013		Pay	FY 2014	
	Grade	Full-Time	Part-Time	Grade	Full-Time	Part-Time
Chief Deputy Court Clerk	12	1	0	E	1	0
Deputy Court Clerk	10	1	2	C	1	2
TOTAL		2	2		2	2

Note: The City Judge is also paid from within this department.



City of Franklin
 2013-2014 Fiscal Year Budget
 Special Revenue Fund - Sanitation & Environmental Services
 Personnel by Position

Sanitation & Environmental Services-Administration

Position	Pay	FY 2013		Not Funded	Pay	FY 2014		Not Funded
	Grade	Full-Time	Part-Time		Grade	Full-Time	Part-Time	
Sanitation & Environmental Services Director	24	1	0	0	K	1	0	0
Assistant Sanitation & Env Services Director	22	1	0	1	I	1	0	0
Office Manager	16	1	0	0	F	1	0	0
Facilities Maintenance Worker	10	1	0	0	C	1	0	0
Administrative Secretary	10	1	0	0	B	1	0	0
Totals		5	0	1	Totals	5	0	0

Sanitation & Environmental Services-Collection

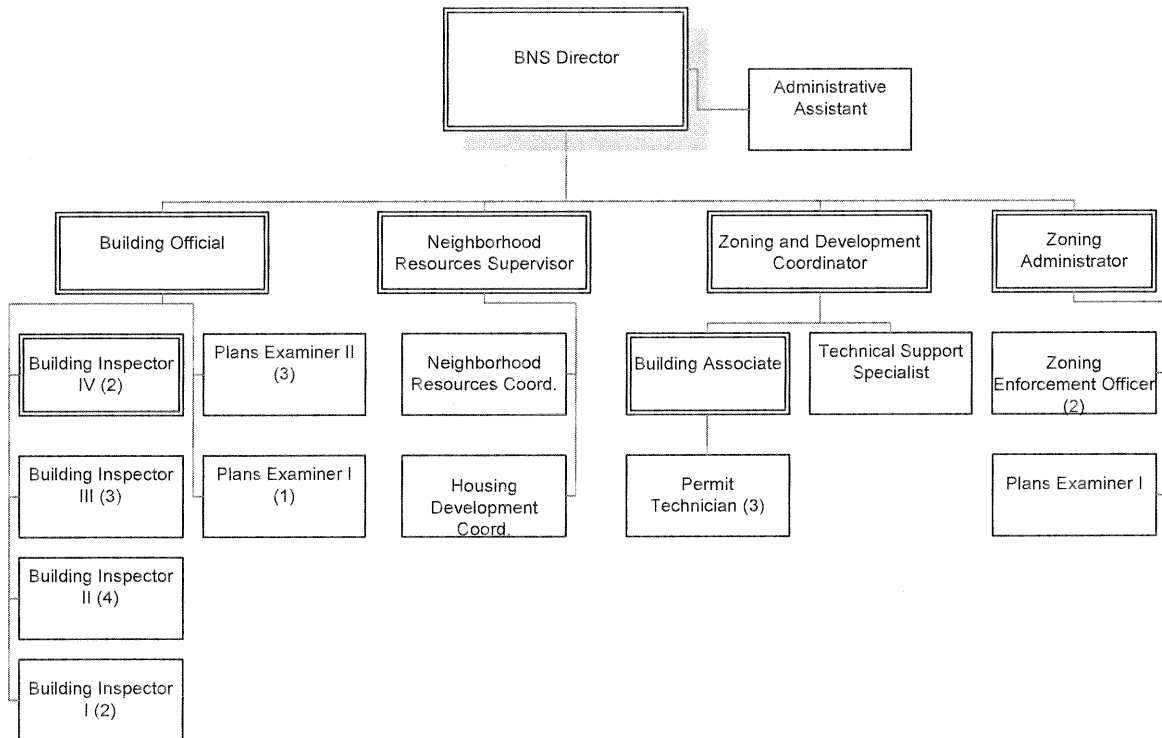
Position	Pay	FY 2013		Not	Pay	FY 2014		Not
	Grade	Full-Time	Part-Time	Funded	Grade	Full-Time	Part-Time	Funded
Collection Manager	---	0	0	0	G	1	0	0
SES Supervisor	17	1	0	0	---	0	0	0
Sanitation & Env Services Crew Supervisor	---	0	0	0	E	4	0	0
SES Crew Foreman	14	4	0	0	---	0	0	0
Sanitation & Env Services Driver/Operator	11	21	0	0	C	21	0	0
HHW Drop Off Site Attendant	TBD	1	0	0	C	1	0	0
Sanitation & Env Services Dispatcher	---	0	0	0	B	1	0	0
Administrative Secretary (Dispatch)	10	1	0	0	---	0	0	0
Sanitation & Env Services Worker	10	6	4	0	B	6	4	0
Totals		34	4	0	Totals	34	4	0

Sanitation & Environmental Services-Disposal

Position	Pay	FY 2013		Not	Pay	FY 2014		Not
	Grade	Full-Time	Part-Time	Funded	Grade	Full-Time	Part-Time	Funded
Transfer Station Manager	---	0	0	0	F	1	0	0
Transfer Station Supervisor	17	1	0	0	---	0	0	0
Equipment Operator	---	0	0	0	D	4	0	0
Tractor-Trailer Driver	12	5	0	1	---	0	0	0
Scale Operator	9	1	0	0	C	1	0	0
Totals		7	0	1	Totals	6	0	0

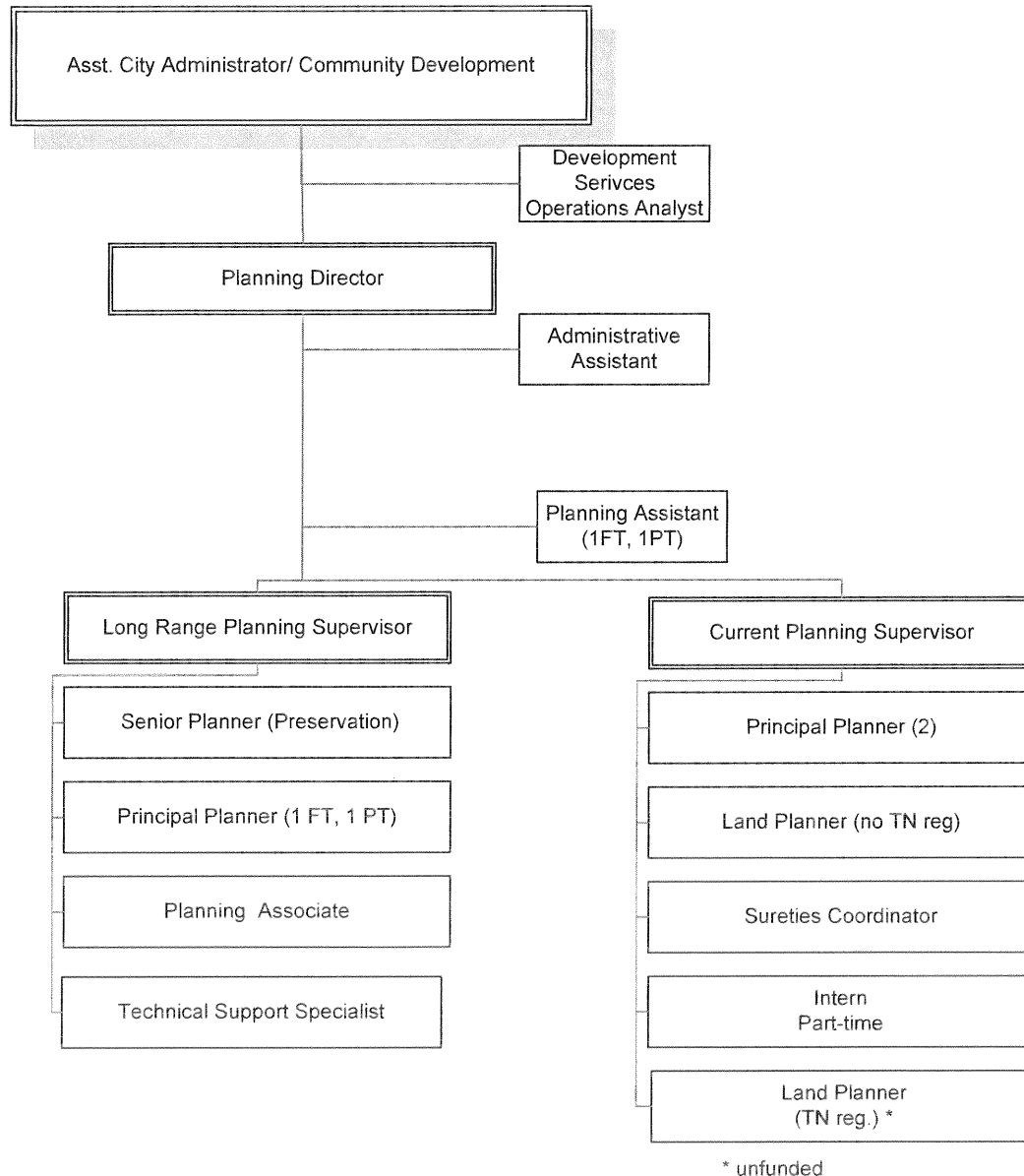
Sanitation & Environmental Services-Recycling

Position	Pay	FY 2013		Not	Pay	FY 2014		Not
	Grade	Full-Time	Part-Time	Funded	Grade	Full-Time	Part-Time	Funded
Sanitation & Env Services Driver/Operator	11	1	0	0	C	1	0	0
Sanitation & Env Services Worker	10	2	0	0	B	2	0	0
Sanitation & Env Services Worker (Part-time)	10	0	1	0	B	0	1	0
Totals		3	1	0	Totals	3	1	0



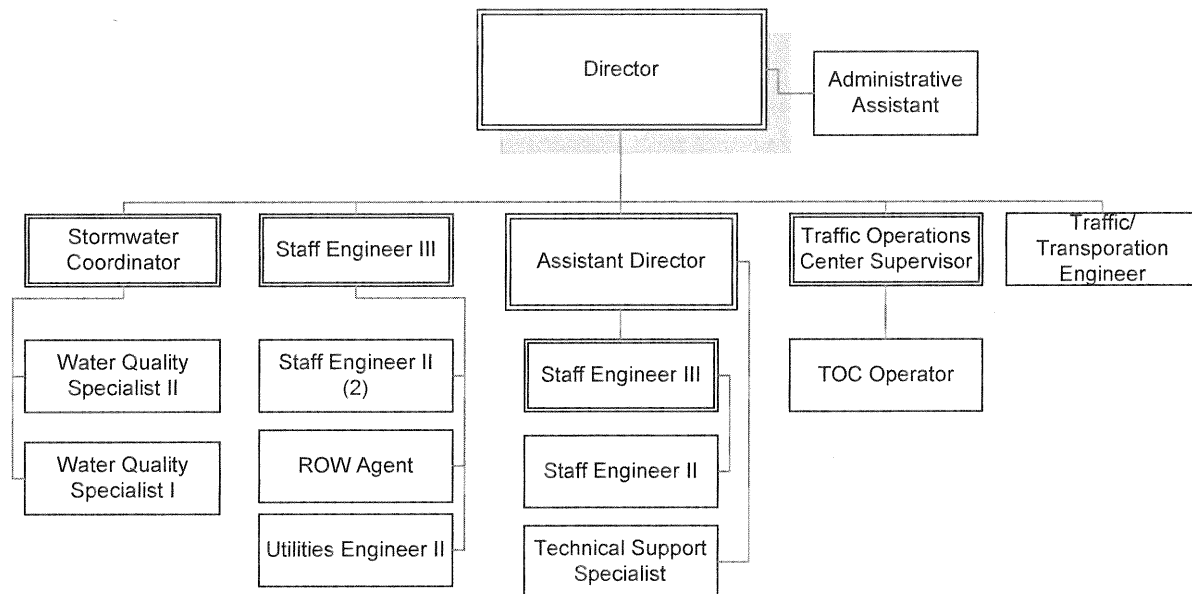
City of Franklin
 2013-2014 Fiscal Year Budget
 General Fund - Building & Neighborhood Services
 Personnel by Position

Position	HR Code	Pay Grade	FY 2013			Pay Grade	FY 2014		
			Full-Time	Part-Time	Unfunded		Full-Time	Part-Time	Unfunded
Bldg & Neighborhood Svcs Director	1106	24	1	0	0	K	1	0	0
Building Official	1118	22	1	0	0	I	1	0	0
Zoning & Development Coordinator	1115	20	1	0	0	H	1	0	0
Building Inspector IV	1111	---	0	0	0	G	2	0	0
Sr Building Inspector	1111	18	1	0	0	---	0	0	0
Sr Building Inspector/Electrical	1111E	18	1	0	0	---	0	0	0
Plans Examiner II	1113	---	0	0	0	G	3	0	0
Building Inspector-Plans Ex Sr	1113	17	1	0	0	---	0	0	0
Building Inspector-Electrical Plans Ex Sr	1119	17	1	0	0	---	0	0	0
Building Inspector-Plumbing/Mech Plans Ex Sr	1107	17	1	0	0	---	0	0	0
Zoning Administrator	1114	17	1	0	0	G	1	0	0
Neighborhood Resources Supervisor	1117	18	1	0	0	F	1	0	0
Housing Development Coordinator	1122	17	1	0	0	F	1	0	0
Plans Examiner I	1422	---	0	0	0	F	2	0	0
Fire Code Plans Examiner	1422	17	1	0	0	---	0	0	0
Residential Plans Ex	TBD	17	1	0	1	---	0	0	0
Building Associate	1101	16	1	0	0	F	1	0	0
Building Inspector III	1102	---	0	0	0	F	3	0	0
Building Inspector II	TBD	---	0	0	0	E	4	0	0
Technical Support Specialist	2006	15	0	0	0	E	1	0	0
Zoning Enforcement Officer	TBD	14	1	0	0	E	2	0	0
Signs/Design Standards Administrator	1116	14	1	0	0	E	0	0	0
Neighborhood Resources Coordinator	1110	12	1	0	0	E	1	0	0
Bldg Inspector I	1102E	---	0	0	0	D	2	0	0
Building Inspector-Electrical	1102E	16	3	0	0	---	0	0	0
Building Inspector	1102	16	5	0	0	---	0	0	0
Permit Technician	0015	12	4	0	0	D	3	0	0
Administrative Assistant	0016	12	1	0	0	D	1	0	0
TOTALS			30	0	1	TOTALS			31



City of Franklin
2013-2014 Fiscal Year Budget
General Fund - Planning & Sustainability
Personnel by Position

Position	Pay Grade	FY 2013		Not Funded	Pay Grade	FY 2014		Not Funded
		Full-Time	Part-Time			Full-Time	Part-Time	
ACA Community Development	26	1	0	0	N	1	0	0
Planning Director	25	1	0	0	L	1	0	0
Long Range Planning Supervisor	22	1	0	0	I	1	0	0
Current Planning Supervisor	22	1	0	0	I	1	0	0
Principal Planner	21	2	0	0	H	3	1	0
Land Planner (TN reg)	21	1	0	1	G	1	0	1
Preservation Planner/Planner Sr	19	1	0	0	G	1	0	0
Development Services Operations Analyst	—	0	0	0	G	1	0	0
Operational Analyst	TBD	0	0	0	—	0	0	0
Sustainability and Grants Coordinator	17	1	0	0	G	0	0	0
Land Planner (No Tn. reg)	19	1	0	0	F	1	0	0
Sureties Coordinator	17	1	0	0	F	1	0	0
Technical Support Specialist	15	0	0	0	E	1	0	0
Planning Assistant	14	1	1	0	E	1	1	0
Planning Associate	14	1	0	0	D	1	0	0
Administrative Assistant	12	1	0	0	D	1	0	0
Permit Technician	12	1	0	0	D	0	0	0
Planner (Part-Time)	—	0	1	0	—	0	0	0
Intern	—	0	1	0	—	0	1	0
TOTAL		15	3	1		16	3	1



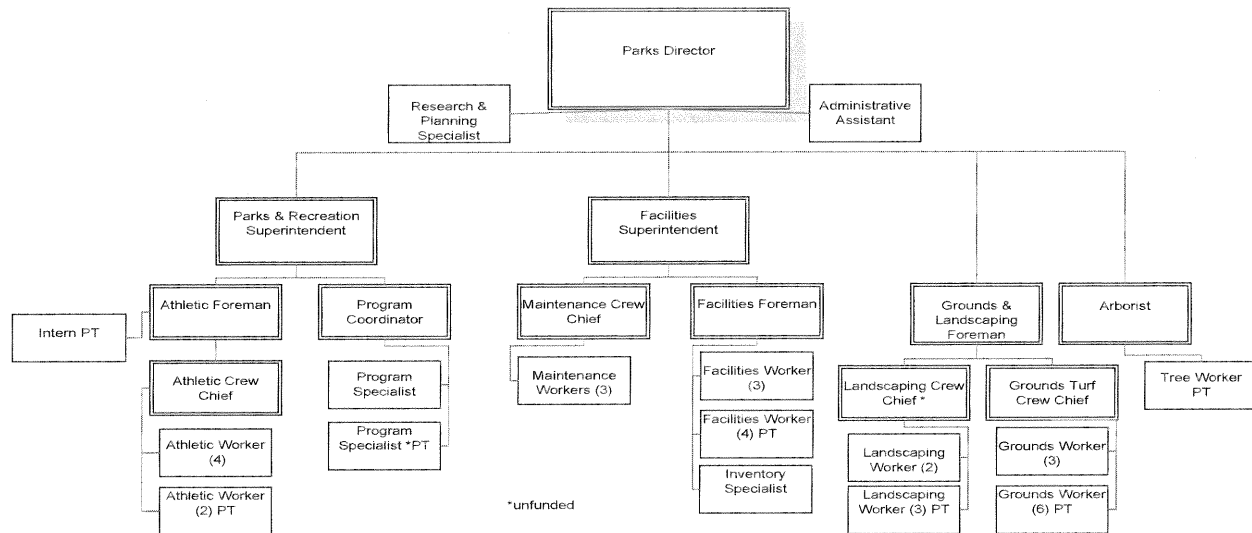
City of Franklin
2013-2014 Fiscal Year Budget
Personnel by Position

Engineering Department

Position	Pay	FY 2013			Pay	FY 2014		
	Grade	Full-Time	Part-Time	Not Funded	Grade	Full-Time	Part-Time	Not Funded
Director of Engineering	25	1	0	0	L	1	0	0
Assistant Director of Engineering	23	1	0	0	J	1	0	0
Staff Engineer III	---	0	0	0	I	2	0	0
Engineering Supervisor	22	2	0	0	---	0	0	0
Staff Engineer II	21	3	0	0	H	3	0	0
Staff Engineer I	20	0	0	0	G	0	0	0
Right of Way Agent	18	1	0	0	G	1	0	0
Technical Support Specialist	15	0	0	0	E	1	0	0
Administrative Asst.	12	2	0	0	D	1	0	0
TOTALS		10	0	0	TOTALS	10	0	0

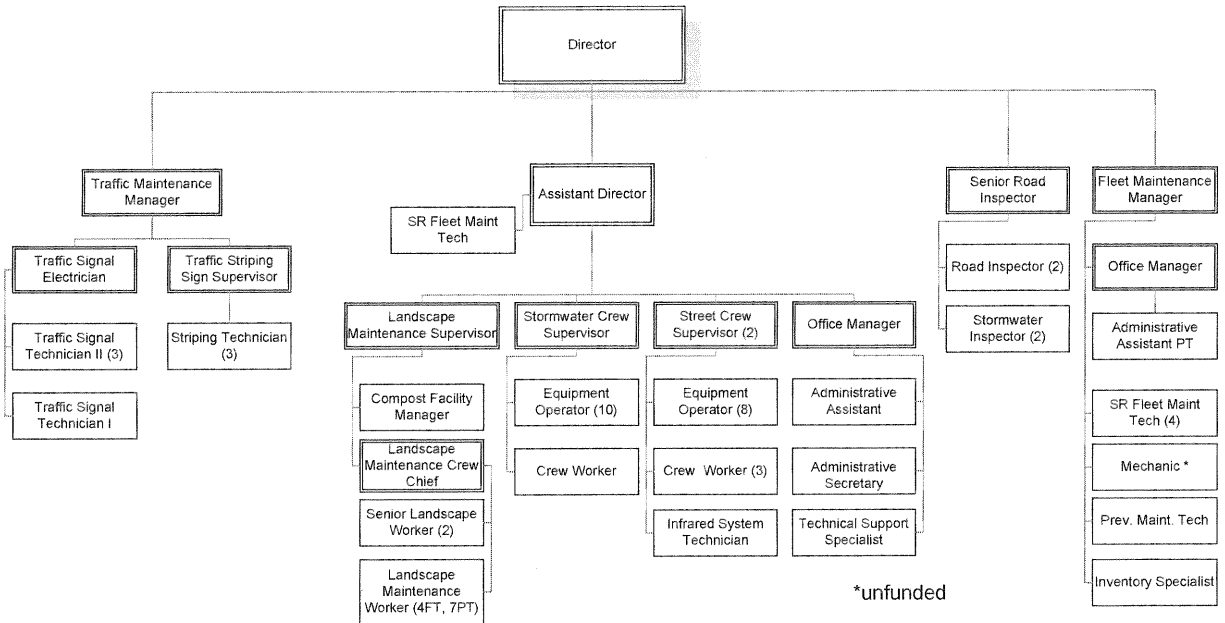
Traffic Operations Center (TOC)

Position	Pay	FY 2013		Pay	FY 2014	
	Grade	Full-Time	Part-Time	Grade	Full-Time	Part-Time
Traffic/Transportation Engineer	23	1	0	I	1	0
TOC Supervisor I	---	0	0	G	1	0
ITS Project Manager	19	1	0	---	0	0
ITS Specialist	17	1	0	F	0	0
TOC Operator	14	1	0	E	1	0
TOTALS		4	0	TOTALS	3	0



City of Franklin
2013-2014 Fiscal Year Budget
General Fund - Parks
Personnel by Position

Position	Pay Grade	FY 2013		Not Funded	Pay Grade	FY 2014		Not Funded
		Full-Time	Part-Time			Full-Time	Part-Time	
Parks Director	24	1	0	0	L	1	0	0
Facilities Superintendent	19	1	0	0	H	1	0	0
Parks & Recreation Superintendent	21	1	0	0	G	1	0	0
Athletic Foreman	17	1	0	0	F	1	0	0
Grounds & Landscape Foreman	15	1	0	0	F	1	0	0
Facilities Foreman	---	0	0	0	F	1	0	0
Facilities Crew Chief	14	1	0	0	---	0	0	0
Programming Coordinator	16	1	0	0	E	1	0	0
Arborist	16	1	0	0	E	1	0	0
Research & Planning Specialist	14	1	0	0	E	1	0	0
Athletics Crew Chief	13	1	0	0	E	1	0	0
Grounds Turf Crew Chief	13	1	0	1 FT	E	1	0	0
Landscape Crew Chief	13	1	0	1 FT	E	1	0	1 FT
Maintenance Crew Chief	13	1	0	0	E	1	0	0
Program Specialist	13	1	1	1 PT	D	1	1	1 PT
Admin Assistant	12	1	0	0	D	1	0	0
Equipment Operator	12	1	0	0	D	0	0	0
Inventory Specialist	---	0	0	0	D	1	0	0
Facilities Inventory Clerk	9	1	0	0	---	0	0	0
Maintenance Worker	9	2	0	0	C	3	0	0
Athletic Workers	11	3	1	1 FT	B	5	2	1 FT
Athletic Turf Worker	11	2	1	0	B	0	0	0
Tree Worker	11	0	1	0	B	0	1	0
Facilities Worker	9	3	4	1 FT	B	3	4	0
Grounds Worker	9	4	6	1 FT	B	4	6	1 FT
Landscaping Worker	9	2	1	0	B	2	3	0
Intern	---	0	0	0	---	0	1	0
TOTALS		33	15	6	TOTALS	33	18	4



**City of Franklin
2013-2014 Fiscal Year Budget
Personnel by Position**

Street-Maintenance Division

Position	Pay Grade	FY 2013		Pay Grade	FY 2014	
		Full-Time	Part-Time		Full-Time	Part-Time
Street Director	24	1	0	K	1	0
Assistant Director	22	1	0	J	1	0
Senior Road Inspector	17	1	0	G	1	0
Landscape Maint Supervisor	16	1	0	F	1	0
Road Inspector	16	2	0	F	2	0
Office Manager	16	1	0	F	1	0
Sr.Fleet Maintenance Technician	15	1	0	F	1	0
Compost Facility Manager	16	1	0	E	1	0
Technical Support Specialist	15	1	0	E	1	0
Street Crew Supervisor	14	2	0	E	2	0
Infrared System Technician	---	0	0	E	1	0
Landscape Maintenance Crew Chief	---	0	0	E	1	0
Administrative Assistant	12	1	0	D	1	0
Equipment Operator	9	1	0	D	8	0
Heavy Equipment Operator	12	3	0	---	0	0
Sr. Equipment Operator	11	5	0	---	0	0
Landscape Maint Worker Sr	12	2	0	C	2	0
Administrative Secretary	10	1	0	B	1	0
Landscape Maint Worker	9	4	5	B	4	7
Crew Worker	8	3	0	B	3	0
TOTALS		32	5	TOTALS	33	7

Street - Stormwater Fund

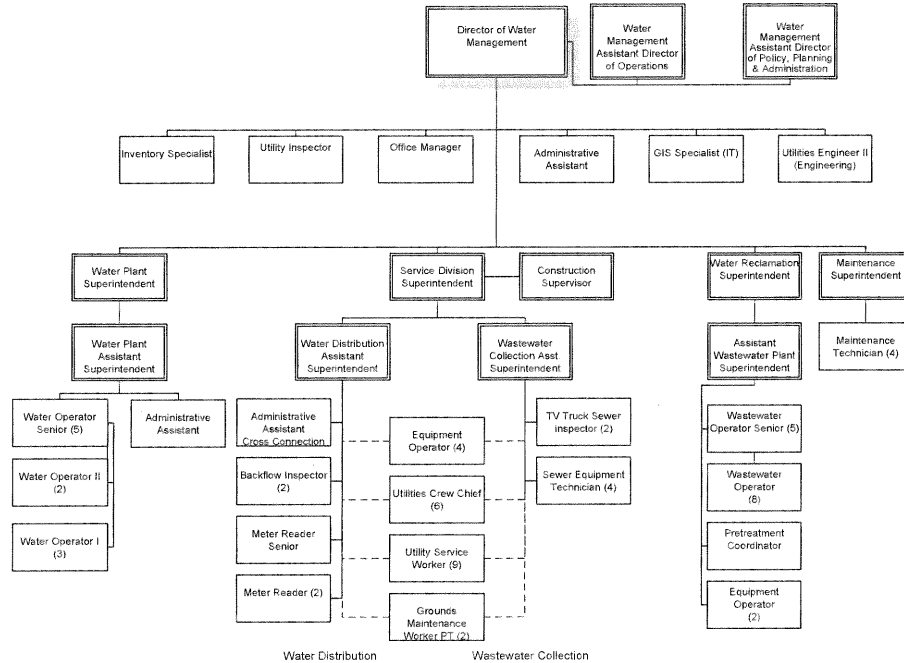
Position	Pay	FY 2013		Pay	FY 2014	
	Grade	Full-Time	Part-Time	Grade	Full-Time	Part-Time
Stormwater Coordinator	21	1	0	H	1	0
Water Quality Specialist II	---	0	0	G	1	0
Water Quality Compliance Inspector	TBD	0	0	---	0	0
Water Quality Specialist I	17	1	0	F	1	0
Stormwater Inspector	16	2	0	F	2	0
Stormwater Supervisor	14	1	0	E	1	0
Equipment Operator	9	1	0	D	10	0
Heavy Equipment Operator	12	2	0	---	0	0
Equipment Operator Sr	11	7	0	---	0	0
Crew Worker	8	1	0	B	1	0
Intern	---	0	1	---	0	0
	TOTALS	16	1	TOTALS	17	0

Street-Traffic Division

Position	Pay Grade	FY 2013		Pay Grade	FY 2014	
		Full-Time	Part-Time		Full-Time	Part-Time
Traffic Maint Manager	---	0	0	H	1	0
Traffic Maint Supervisor	18	1	0	---	0	0
Traffic Sign/Mnt Electrician	16	1	0	F	1	0
Traffic Striping/Sign Prod Supervisor	16	1	0	F	1	0
Traffic Signal Technician II	---	0	0	F	3	0
Traffic Signal Technician I	---	0	0	E	1	0
Traffic Signal Technician	14	4	0	---	0	0
Striping Technician	---	0	0	D	3	0
Asst Traffic Striping Technician	12	2	0	---	0	0
	TOTALS	9	0	TOTALS	10	0

Street-Fleet Maintenance

Position	Pay Grade	FY 2013			Pay Grade	FY 2014		
		Full-Time	Part-Time	Unfunded		Full-Time	Part-Time	Unfunded
Fleet Maintenance Manager	---	0	0	0	H	1	0	0
Fleet Maintenance Supervisor	17	1	0	0	---	0	0	0
Sr Fleet Maintenance Technician	15	3	0	0	F	4	0	0
Office Manager	---	0	0	0	F	1	0	0
Mechanic	12	1	0	0	E	1	0	1
Administrative Assistant	12	1	1	0	D	0	1	0
Inventory Specialist	---	0	0	0	D	1	0	0
Parts Specialist	10	1	0	0	---	0	0	0
Preventive Maintenance PM Technician	10	1	0	0	TBD	1	0	0
Total		8	1	0		9	1	1



WATER SECTION - Proposed Personnel

UTILITY BILLING

POSITION	PAY GRADE	ANTICIPATED PAY GRADE	BUDGETED FY 2012	BUDGETED FY 2013	AMENDED FY 2013	BUDGETED FY 2014	BUDGETED FY 2015
Meter Reader Sr	10	C	1	1	1	1	1
Meter Reader	9	B	2	2	2	2	2
TOTALS			3	3	3	3	3

WATER DISTRIBUTION

POSITION	PAY GRADE	ANTICIPATED PAY GRADE	BUDGETED FY 2012 FULL- TIME	BUDGETED FY 2013 FULL- TIME	AMENDED FY 2013 FULL- TIME	BUDGETED FY 2014	BUDGETED FY 2015
Service Division Superintendent	20	I	1	1	1	1	1
Water Distribution Assistant Superintendent	19	G	1	1	1	1	1
Utilities Crew Chief	13	E	3	3	3	3	3
Backflow Inspector	16	E	2	2	2	2	2
Administrative Assistant	12	D	1	1	1	1	1
Inventory Specialist	12	D	1	1	1	1	1
Equipment Operator	11	D	2	3	2	2	2
Utility Service Worker	10	C	4	5	4	4	4
TOTALS			15	17	15	15	15

WATER TREATMENT PLANT

POSITION	PAY GRADE	ANTICIPATED PAY GRADE	BUDGETED	BUDGETED	AMENDED FY	BUDGETED FY 2014	BUDGETED FY 2015
			FY 2012 FULL- TIME	FY 2013 FULL- TIME	2013 FULL- TIME		
Water Treatment Superintendent	20	H	1	1	1	1	1
Water Treatment Assistant Superintendent	19	G	1	1	1	1	1
Water Operator Sr	16	E	5	5	5	5	5
Water Operator 2	13	TBD	2	2	2	2	2
Administrative Assistant	12	D	1	1	1	1	1
Water Operator 1	11	D	3	3	3	3	3
TOTALS			13	13	13	13	13
WATER SECTION TOTALS			31	33	31	31	31

WASTEWATER SECTION - Proposed Personnel**UTILITY ADMINISTRATION**

POSITION	PAY GRADE	ANTICIPATED PAY GRADE	BUDGETED	BUDGETED	AMENDED FY	BUDGETED FY 2014	BUDGETED FY 2015
			FY 2012 FULL- TIME	FY 2013 FULL- TIME	2013 FULL- TIME		
Director	25	L	1	1	1	1	1
Assistant Director of Operations	23	J	1	1	1	1	1
Assistant Director of Administration and Policy	23	J	0	0	1	1	1
GIS Analyst	17	E	1	1	1	1	1
Administrative Assistant	12	D	1	1	1	1	1
Utility Inspector	17	F	3	3	3	3	3
Secretary	9	-	1	1	1	0	0
Office Manager	16	F	0	0	0	1	1
Utilities Engineer II	21	H	1	1	1	1	1
Grounds Worker (Seasonal)	9	B	0	0	0	2	2
TOTALS			9	9	10	12	12

WASTEWATER COLLECTION

POSITION	PAY GRADE	ANTICIPATED PAY GRADE	BUDGETED	BUDGETED	AMENDED FY	BUDGETED FY 2014	BUDGETED FY 2015
			FY 2012 FULL- TIME	FY 2013 FULL- TIME	2013 FULL- TIME		
Wastewater Collection Assistant Superintendent	19	G	1	1	1	1	1
Construction Supervisor	16	TBD	1	1	1	1	1
TV Truck Sewer Inspector	15	D	2	2	2	2	2
Lift Station Technician	14	E	4	4	0	0	0
Utilities Crew Chief	13	E	4	4	4	3	3
Equipment Operator	11	D	2	2	2	2	2
Sewer Equipment Technician	11	D	4	4	4	4	4
Utility Service Worker	10	C	5	5	5	5	5
TOTALS			23	23	19	18	18

WATER RECLAMATION

POSITION	PAY GRADE	ANTICIPATED PAY GRADE	BUDGETED	BUDGETED	AMENDED FY	BUDGETED FY 2014	BUDGETED FY 2015
			FY 2012 FULL- TIME	FY 2013 FULL- TIME	2013 FULL- TIME		
Water Reclamation Superintendent	20	I	1	1	1	1	1
Assistant Water Reclamation Superintendent	19	G	1	1	1	1	1
Pretreatment Coordinator	17	F	1	1	1	1	1
Wastewater Operator Sr	16	E	3	3	3	5	5
Wastewater Maintenance Technician	14	E	1	1	0	0	0
Equipment Operator	12	D	2	2	2	2	2
Wastewater Operator 1	11	D	10	10	10	8	8
Secretary	9	-	1	1	1	0	0
TOTALS			20	20	19	18	18

MAINTENANCE

POSITION	PAY GRADE	ANTICIPATED PAY GRADE	BUDGETED	BUDGETED	AMENDED FY	BUDGETED FY 2014	BUDGETED FY 2015
			FY 2012 FULL- TIME	FY 2013 FULL- TIME	2013 FULL- TIME		
Maintenance Supervisor	19 EST	TBD	0	0	1	1	1
Maintenance Technician	14 EST	E	0	0	4	4	4
TOTALS			0	0	5	5	5
WASTEWATER SECTION TOTALS			52	52	53	53	53

TOTAL WATER MANAGEMENT

83 85 84 84 84