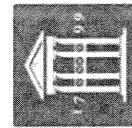


Overview of City of Franklin Standards:

Storage of Recreational Vehicles

Presented to the BOMA Work Session
August 27, 2013

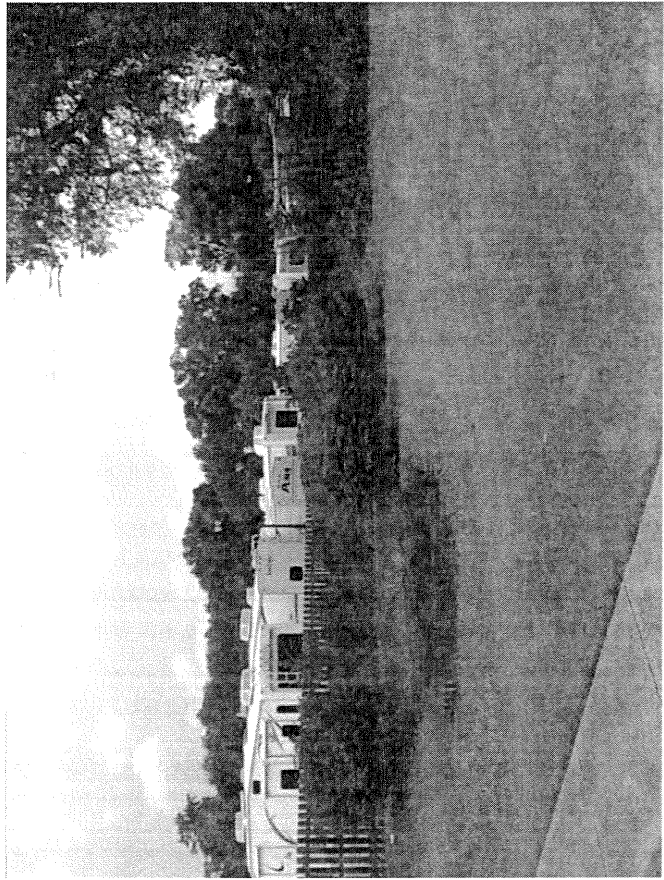


HISTORIC
FRANKLIN
TENNESSEE

- The Zoning Ordinance states that the customary or continual parking of certain vehicles and equipment is prohibited ... within yards adjacent to public streets in residential neighborhoods since the presence of such vehicles runs contrary to the intended residential character of such neighborhoods.

Intent of Zoning Ordinance section 4.1.6 (14)

Parking of RV's in Self Storage



- The standards in the Zoning Ordinance apply to:
 - Heavy trucks with more than two axles
 - Heavy trucks that exceed 20,000 pounds of gross vehicle weight,
 - Trailers with more than one axle
 - Major recreational equipment, including, but not limited to, boats, campers, recreational vehicles, motor homes, and travel trailers.

Applicability

- Storage or Parking of Recreational Equipment is **not allowed** in the front or side yard adjacent to a public street in any residential district

- Storage or Parking of Recreational Equipment is allowed in **rear yards only**:

- AG, ER, R-1, R-2, and Cl.

- Storage or Parking of Recreational Equipment is **not allowed** in:

- R-3, R-6, RX, OR, GO, NC, CC, GC, MN, ML, MX, LI and HI

Restrictions Based on Zoning District

Example of Allowed Parking in Rear Yard

