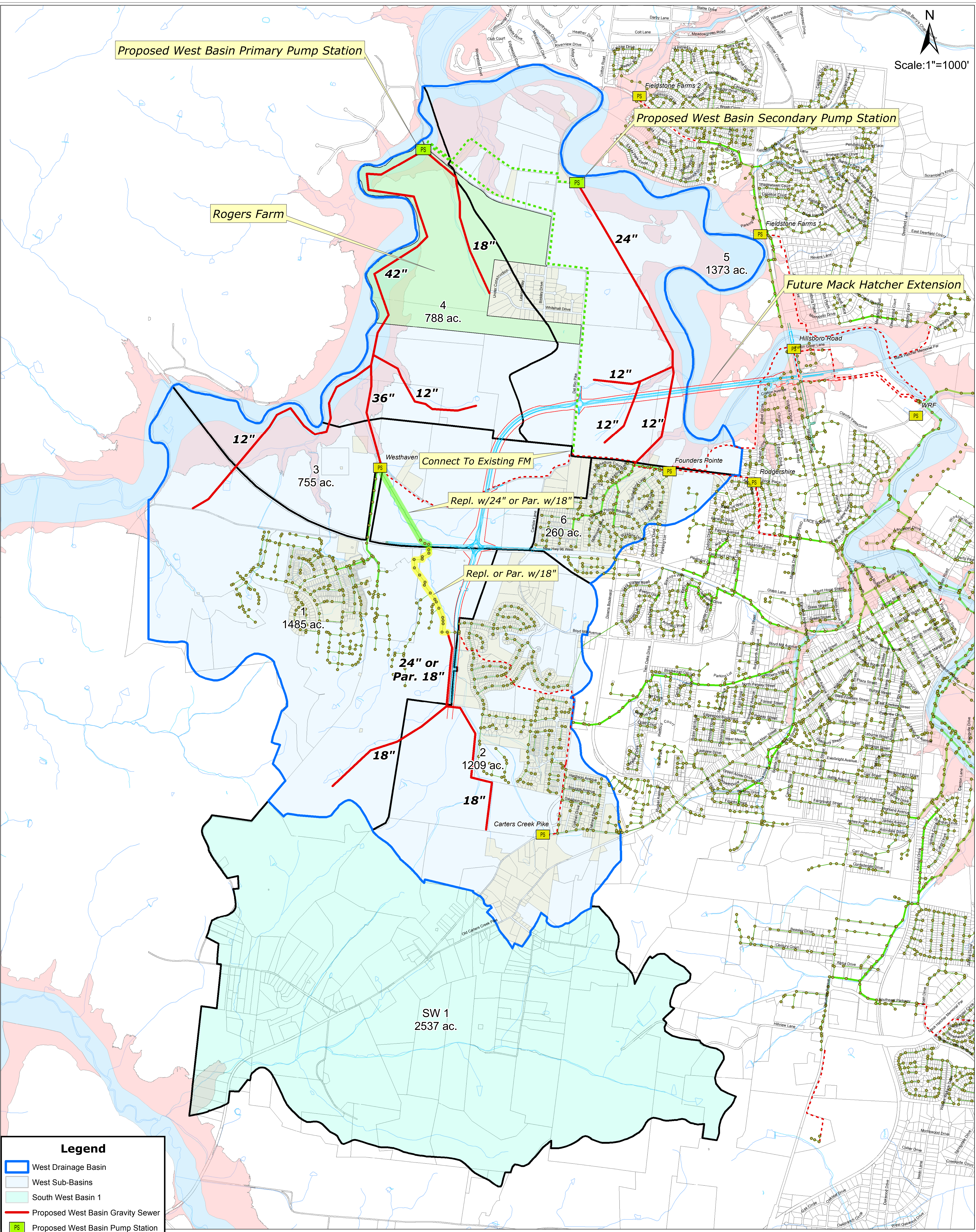


Proposed West Basin Primary Pump Station

Proposed West Basin Secondary Pump Station

Rogers Farm

Future Mack Hatcher Extension



Legend

- West Drainage Basin
- West Sub-Basins
- South West Basin 1
- Proposed West Basin Gravity Sewer
- Proposed West Basin Pump Station
- Proposed West Basin Force Main
- Existing Pump Station
- Existing Collector Sewer >= 10"
- Existing Gravity Sewer
- Existing Force Main
- Parcels <=10 AC. = 857 Ac.
- Rogers Farm Development

**City of Franklin, TN
West Drainage Basin
Exhibit B-2**