


A low-angle, close-up photograph of a gravel path. The path is composed of small, dark grey and brown stones, leading from the foreground towards the background. In the background, there is a dense line of green plants and grasses, slightly out of focus. The sky is bright and clear, suggesting a sunny day. The overall scene is natural and serene.

**McEwen & Carothers Corridor  
Integrated Growth Plan**

# Area Overview



VANDERBILT UNIVERSITY  MEDICAL CENTER



# How Much Density?



×

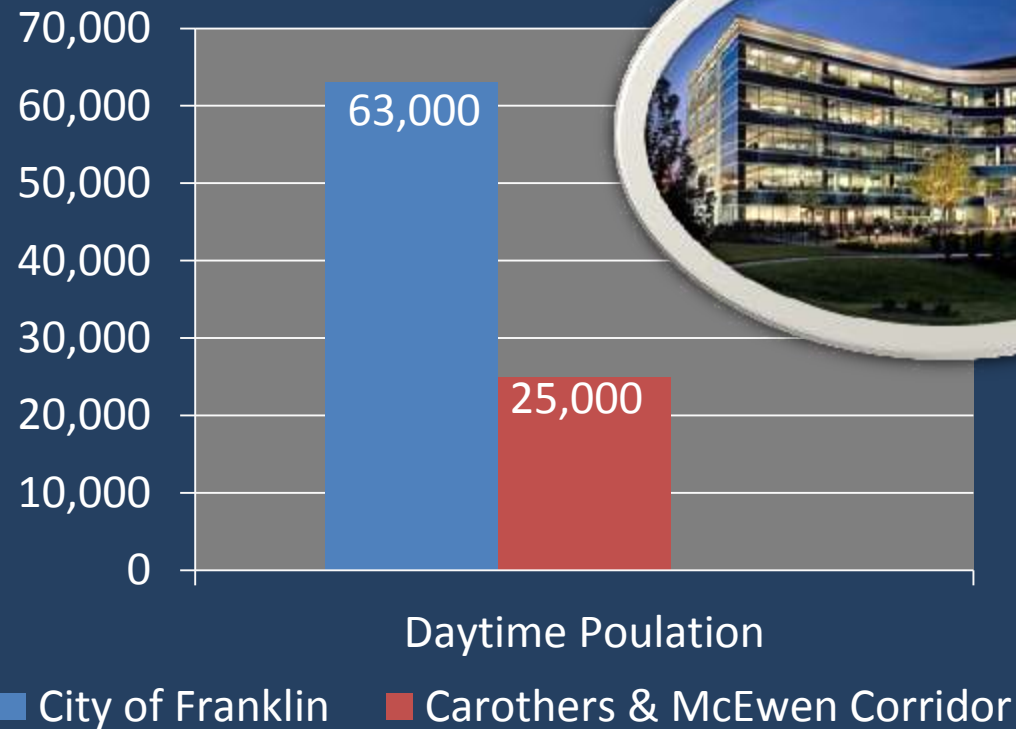
12



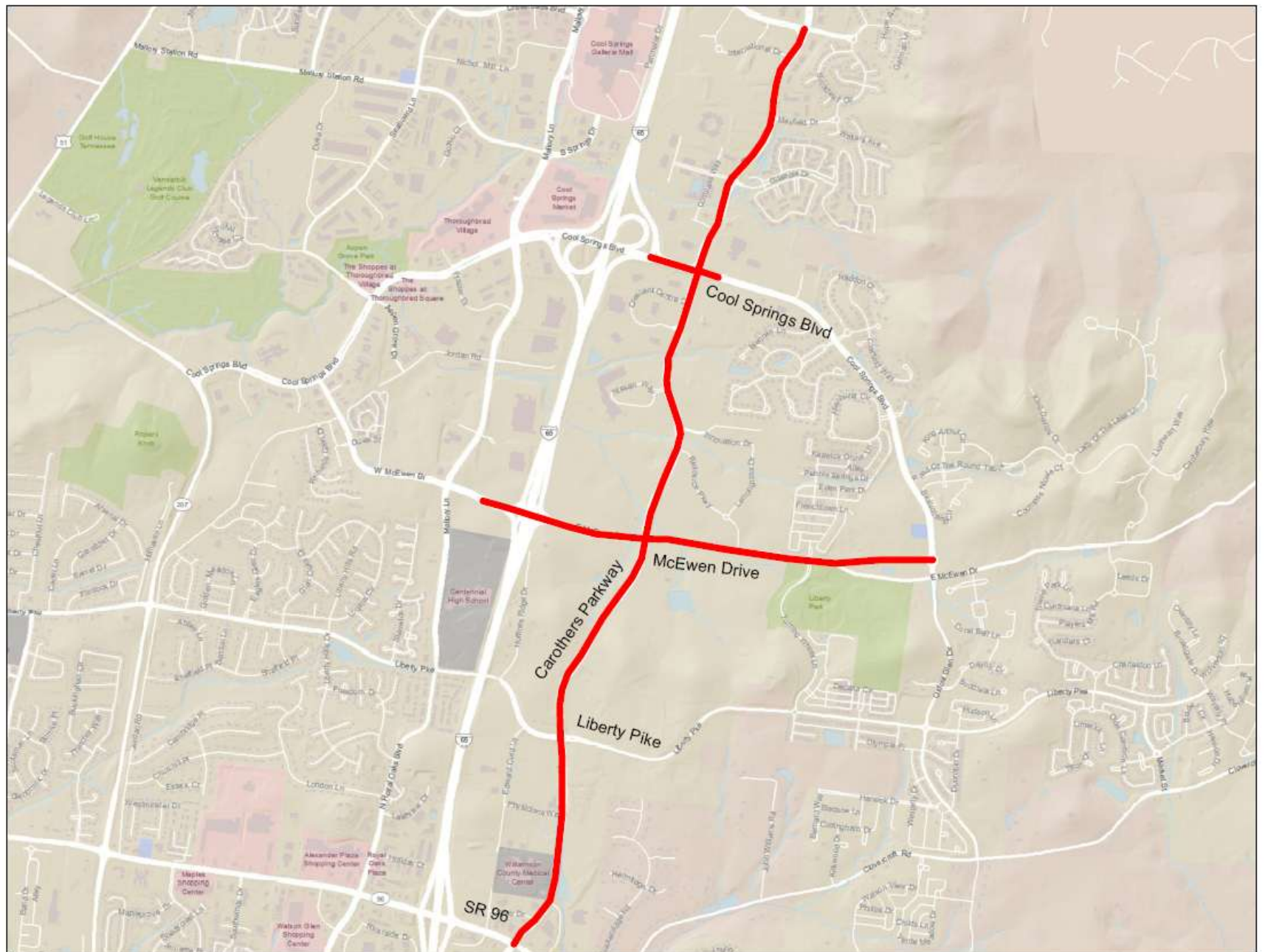
# Daytime Population

An estimated 25,000 people will inhabit the Carothers & McEwen corridor during the day.

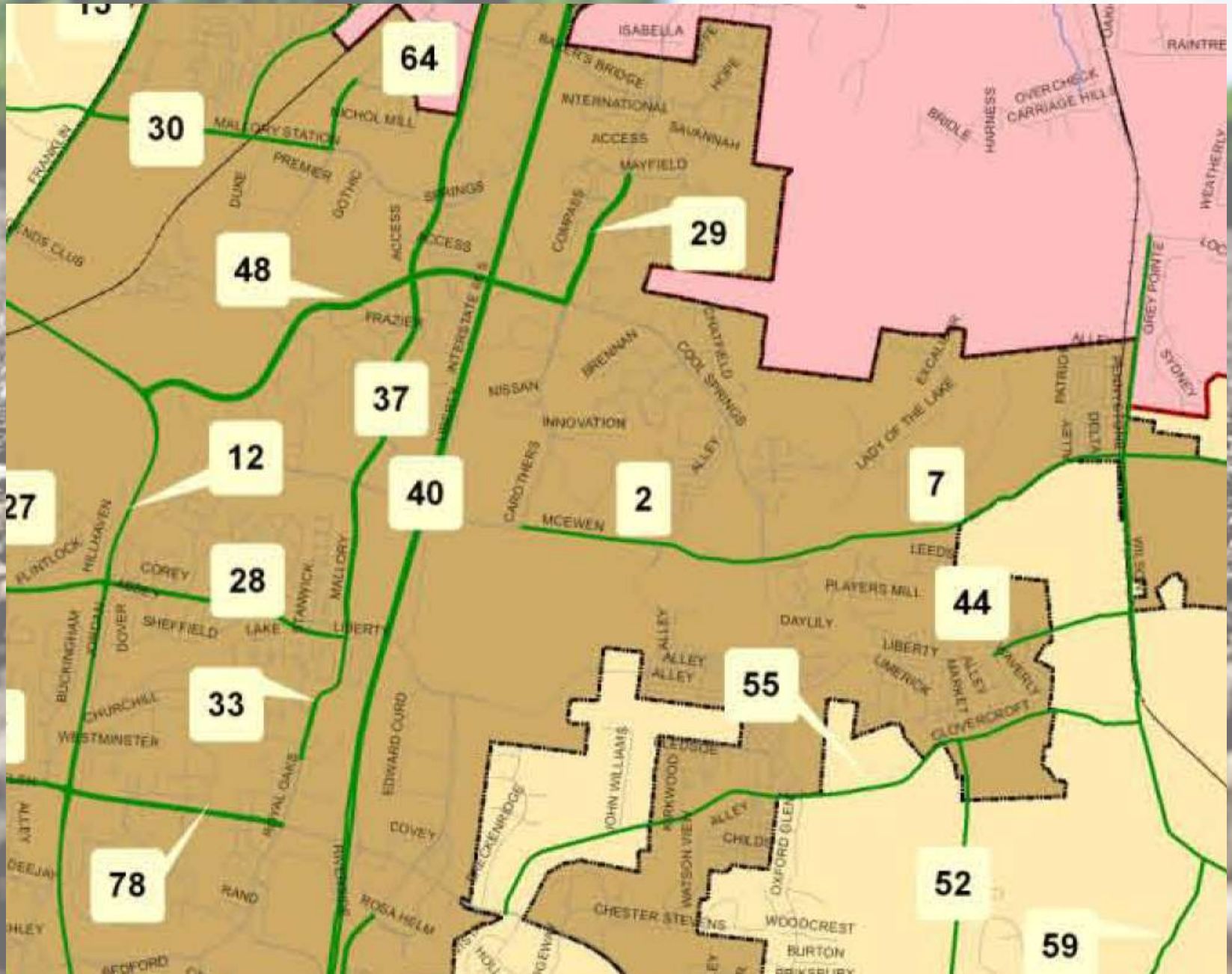
That's roughly **40%** of the City of Franklin's population in 2010!



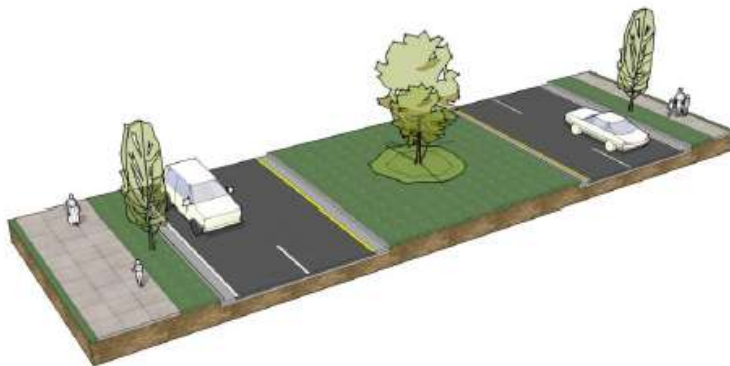
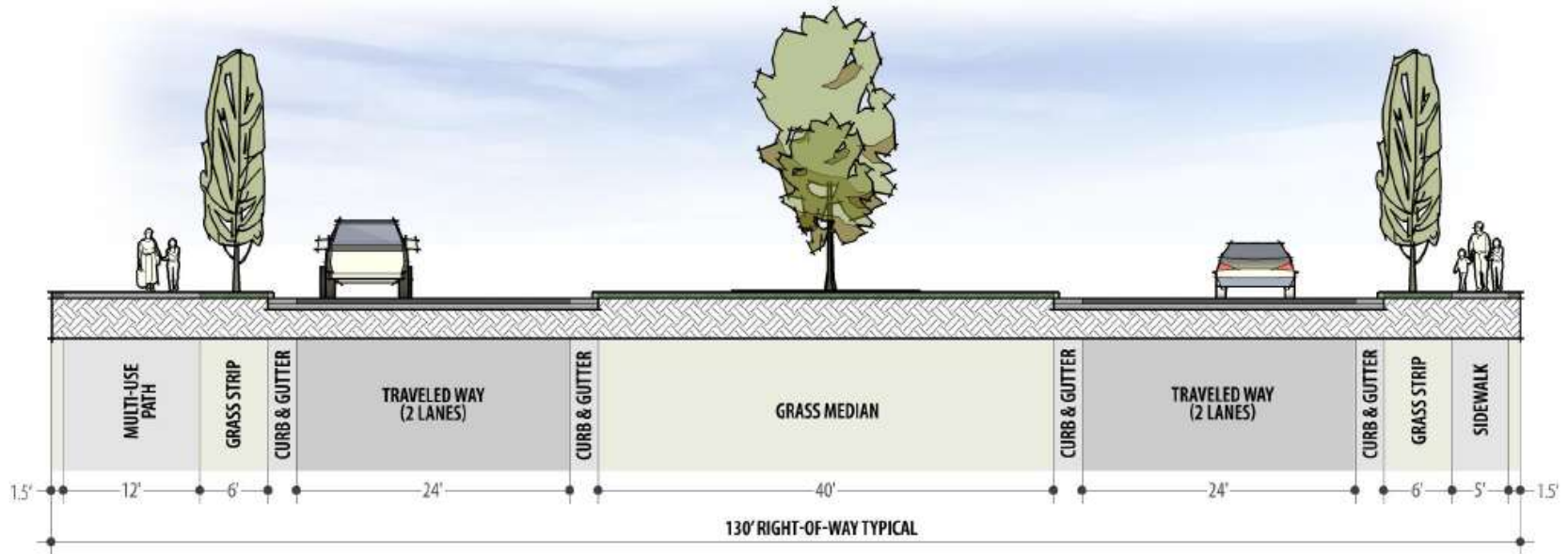
# Overview of Study Area



# 2010 Major Thoroughfare Plan



# Carothers - Existing Typical Section



Isometric View

**Notes:**

Additional right-of-way may be required near intersections.  
 Elements of this typical section may be revised if approved by the City Engineer in dense commercial areas.

Major Arterial  
 130' Right-of-Way  
 Conventional Areas

City of Franklin  
 Engineering Department

Date: 5/27/11  
 NTS

Std Dwg No:  
 TS-2

# Summary of Needed Improvements

- Widen Carothers Parkway from 4 to 6 lanes from Bakers Bridge to Highway 96
- Widen McEwen Drive from 4 to 6 lanes from Mallory Lane to Resource Parkway
- Multiple Sewer Line Upgrades in the Area
- Multiple Turn Lanes, Additional ROW, and Several Large Utility Relocations
- Construction of a Significant Intersection at McEwen and Carothers





# What Is the Next Step?

## Immediate Needs:

- Endorse a Resolution Adopting a Specific Option from the Integrated Growth Plan
- Collaborate with Franklin Transit Authority to Perform a Regional Transit Feasibility Study for the Cool Springs Area

## Long Term Needs:

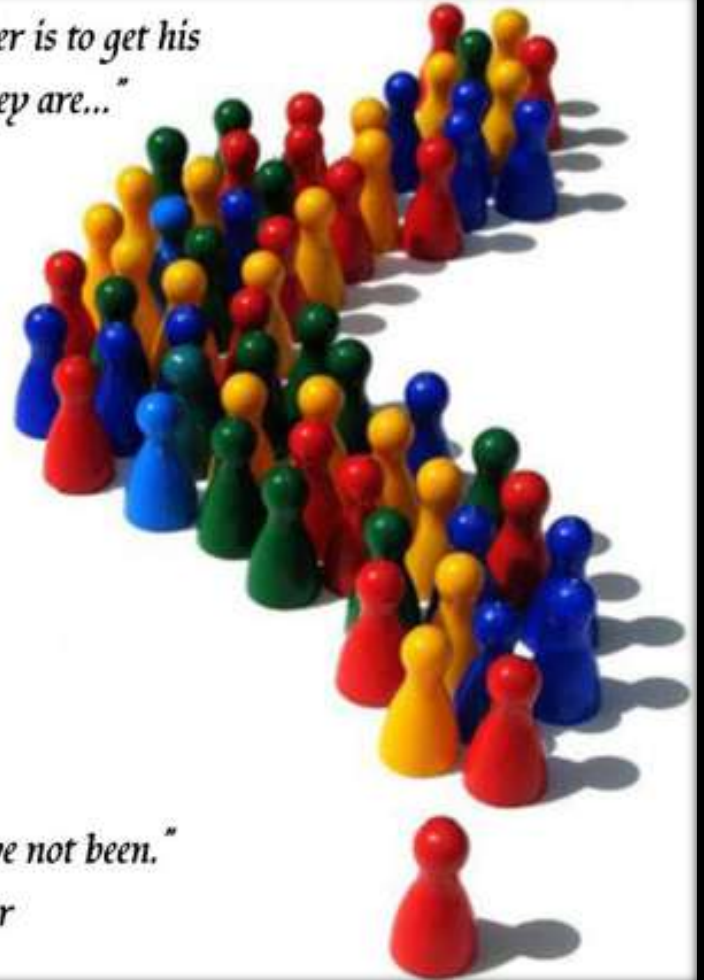
- Establish Comprehensive Transportation Plan
- Implement Adaptive Signal Timing in Cool Springs Area
- Create a series of phased CIP projects



# Questions?



*"The task of the leader is to get his people from where they are..."*



*"...to where they have not been."  
- Henry Kissinger*