



HISTORIC
FRANKLIN
TENNESSEE

Public Hearing

Long Lane over I-65

Franklin, Tennessee

January 10, 2013

AGENDA

- 6:00 Sign In
- 6:10 Formal Presentation
Question and Answer
- 6:30 Informal Display Viewing
- 7:00 Adjourn



Public Hearing
Long Lane over I-65
Franklin, Tennessee
January 10, 2013

Presented by:
Paul Holzen, PE
City of Franklin

Sammie McCoy, PE
Alfred Benesch and Company





HISTORIC
FRANKLIN
TENNESSEE

MEETING PURPOSE

- **To provide the public with up to date information on the development of the project**
- **To display the proposed improvements**



HISTORIC
FRANKLIN
TENNESSEE

PROJECT HISTORY

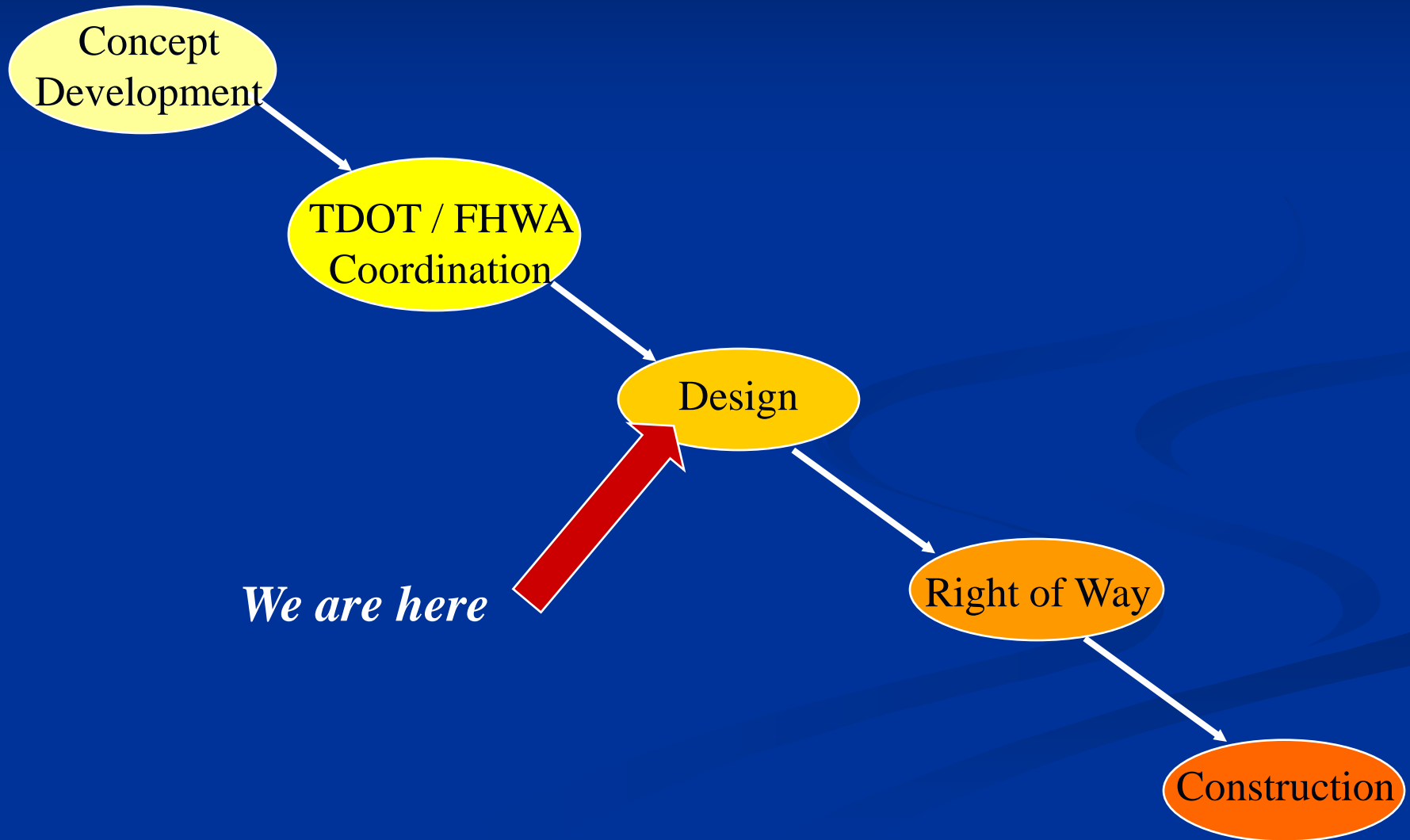
- **May 2007 – Alignment Study completed with two options**
 - **Option 1 – Overpass**
 - **Option 2 – Underpass**
- **September 2007 – First Public Meeting**
 - **Based on public input and review by the City the preferred option was Option 2 – Underpass**
 - **Began initial coordination with TDOT**
- **June 2012 – Option 1 – Overpass approved by TDOT**
 - **Decision based on constructability issues and future maintenance on I-65 associated with the bridges for the underpass**
- **August 2012 – Current phase of design began**



17 99

HISTORIC
FRANKLIN
TENNESSEE

PROJECT DEVELOPMENT PROCESS



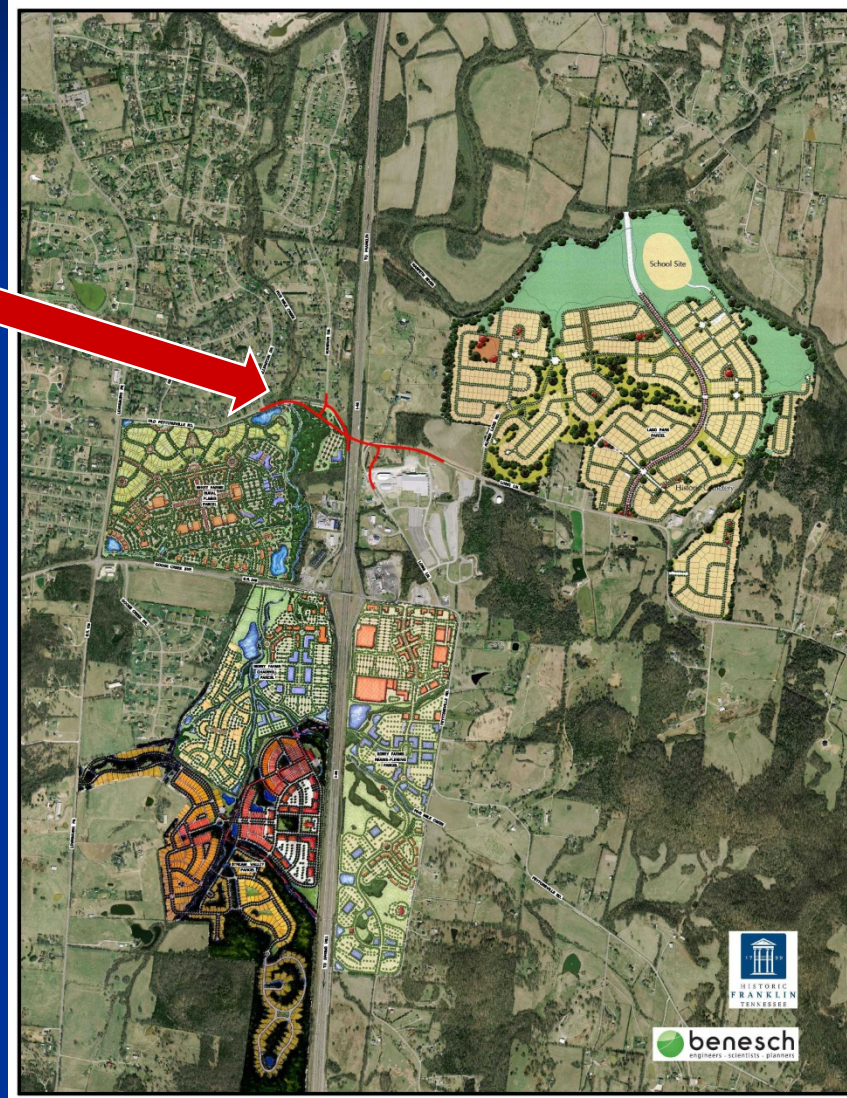


17 99

HISTORIC
FRANKLIN
TENNESSEE

PROJECT STUDY AREA

*Proposed
Long Lane
over I-65*



benesch
engineers · scientists · planners



HISTORIC
FRANKLIN
TENNESSEE

PROJECT INFORMATION

- **The City of Franklin is developing the project**
- **The project is noted as a Short Term Priority in the City's Major Thoroughfare Plan**
- **Funded and constructed by the City of Franklin**
- **Estimated Construction cost is \$6,732,500**
- **Long Lane is a Minor Collector**
- **Design Speed Limit = 40 MPH**
- **Posted Speed Limit = 35 MPH**



HISTORIC
FRANKLIN
TENNESSEE

PROJECT INFORMATION

- **With the City's support TDOT has committed to construct and fund construction of the three bridge piers within the TDOT Right-of-Way as part of the I-65 widening**
 - **Allows for coordination of utilities, drainage, signage, minimizes impacts to I-65 traffic, ease of construction, reduced construction cost to the City**



HISTORIC
FRANKLIN
TENNESSEE

PROJECT NEED

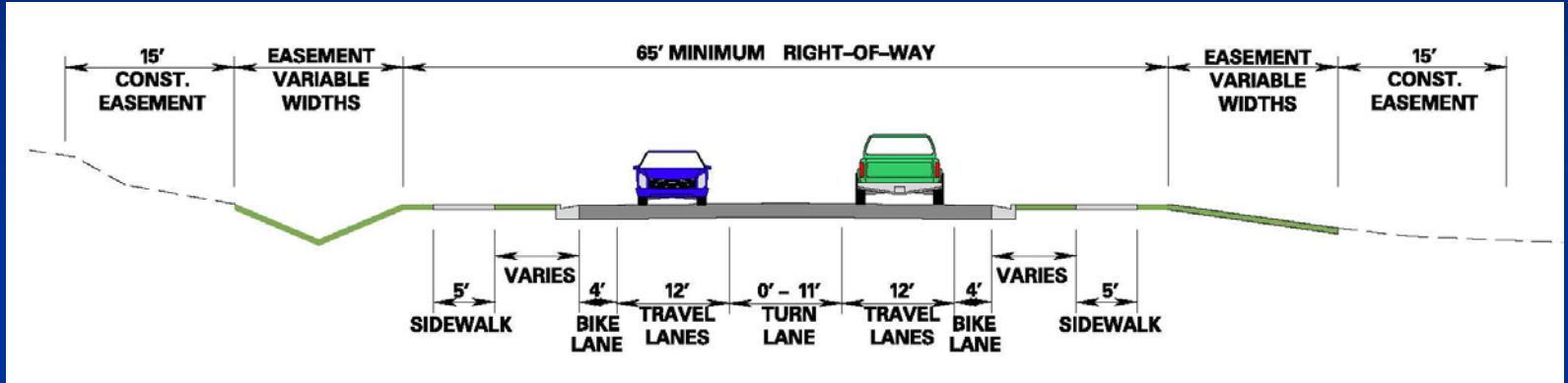
- **Provides alternate access across I-65 for emergency vehicles and local residents**
- **Logical point for community connectivity north of Goose Creek exit**
- **Provides an alternate to the six signals proposed on Goose Creek between Lewisburg Pike and Long Lane**
- **Relieve future traffic at the Goose Creek Interchange**



17 99

HISTORIC
FRANKLIN
TENNESSEE

TYPICAL SECTION



Long Lane over I-65



17 99

HISTORIC
FRANKLIN
TENNESSEE

PROPOSED CROSSING



**LONG LANE OVER I-65
CITY OF FRANKLIN, TENNESSEE
WILLIAMSON COUNTY**



benesch
ENGINEERS • ARCHITECTS • PLANNERS





HISTORIC
FRANKLIN
TENNESSEE

CONTACTS

Paul Holzen, P.E.
City of Franklin
Director of Engineering
109 3rd Avenue South
Franklin, TN 37064
(615) 791-3218



HISTORIC
FRANKLIN
TENNESSEE

QUESTIONS

Question and Answer



HISTORIC
FRANKLIN
TENNESSEE

THANK YOU . . .

**For your attendance and participation
in this Public Hearing**