



MEMORANDUM

January 15, 2013

TO: Board of Mayor and Aldermen

FROM: Eric S. Stuckey, City Administrator
David Parker, P.E., City Engineer
Paul P. Holzen, P.E, Director of Engineering
William Banks, Staff Engineer

SUBJECT: Discussion regarding a possible Sidewalk Project along Franklin Road, from the Harpeth River Bridge to Liberty Pike (Update #1)

Purpose

The purpose of this memorandum is to provide the Board of Mayor and Aldermen (BOMA) with the necessary information regarding options for and the feasibility of a sidewalk project along Franklin Road (Harpeth River Bridge to Liberty Pike).

Background

Ordinance 2006-18 approved the concept plan for Jamison Station located along Liberty Pike. Sidewalks and connectivity with downtown were discussed in length during the Public Hearings on April 11, 2006 and May 9, 2006. The original staff recommendation stated the Applicant (Jamison Station) would fund the construction of sidewalks from Liberty Pike to the river, on both sides, and reimburses the City for right-of-way acquisition and its costs. Within the final conditions of approval, this was changed to state: *The applicant shall be required to contribute the sum of \$1,800.00 per residential unit to the city for construction of road improvements to Franklin Road, including but not limited to sidewalks as part of the Franklin Corridor and Connector Streets Economic Development project. Each such payment to be due prior to issuance of certificate of occupancy for each unit and a separate document memorializing this understanding be drafted by the City and returned to this Board for approval (amended 5/9/06 BOMA).*

The Fiscal Year 2013 budget included funding of \$528,000 for a sidewalk project along Franklin Road connecting downtown and the Factory. As part of this request staff has looked at multiple options and routes for sidewalk to connect the development to downtown. The main two options would be along Franklin Road, and the other being along Eddy Lane and connecting through Fort Granger and Pinkerton Park. The latter option was not recommended because the sidewalk would mostly serve the development. The Franklin Road sidewalks were recommended because it would also connect The Factory and the adjacent neighborhoods off Franklin Road.

Financial Impact

The City has collected \$466,200.00 in fees from Jamison Station for their first two (2) phases (\$1,800.00 per unit, and 259 units completed). The FY 2013 budget includes a total of \$528,000 the Engineering Capital budget for the Franklin Road sidewalk project. This amount includes the accumulated developer contributions to the sidewalk.



A cost estimate was created in the Spring of 2012 that showed constructing a sidewalk on the east side of Franklin Road, from the Harpeth River Bridge to Liberty Pike, would cost approximately \$528,000. This estimate included a possible \$114,000.00 in ROW/Easement acquisition costs. As part of the Engineering Departments FY 2013 budget the BOMA approved funding in the amount of \$528,000 for the construction of a sidewalk along Franklin Road.

An older 2009 estimate for the total Franklin Road Streetscape Project totaled \$9,740,203.00. This project begins at the Harpeth River Bridge and ends just past Harpeth Industrial Court.

As of December 2012, updated cost estimates were prepared by the Engineering Department. These were based upon recent CIP Projects that went out to bid. Using these updated construction bid line item numbers, the revised costs are as follows:

Franklin Road Sidewalk

1/11/2013

	Sidewalk Only	Eastside Streetscape Only - Harpeth River Bridge to Liberty Pike	Full Streetscape - Harpeth River Bridge to Liberty Pike	Full Streetscape - Harpeth River Bridge to Harpeth Industrial Court
Construction Estimate	\$456,018.85	\$1,997,079.00	\$5,998,504.00	\$8,379,000.00
Construction Contingency	\$10,000.00	\$100,000.00	\$250,000.00	\$450,000.00
Easement Acquisition	\$71,250.00	\$35,000.00	\$60,000.00	\$100,000.00
Final Design	\$15,000.00	\$150,000.00	\$150,000.00	\$150,000.00
Construction Administration	\$0.00	\$300,000.00	\$500,000.00	\$650,000.00
TOTAL PROJECT COST	\$552,268.85*	\$2,582,079.00*	\$6,958,504.00	\$9,729,000.00

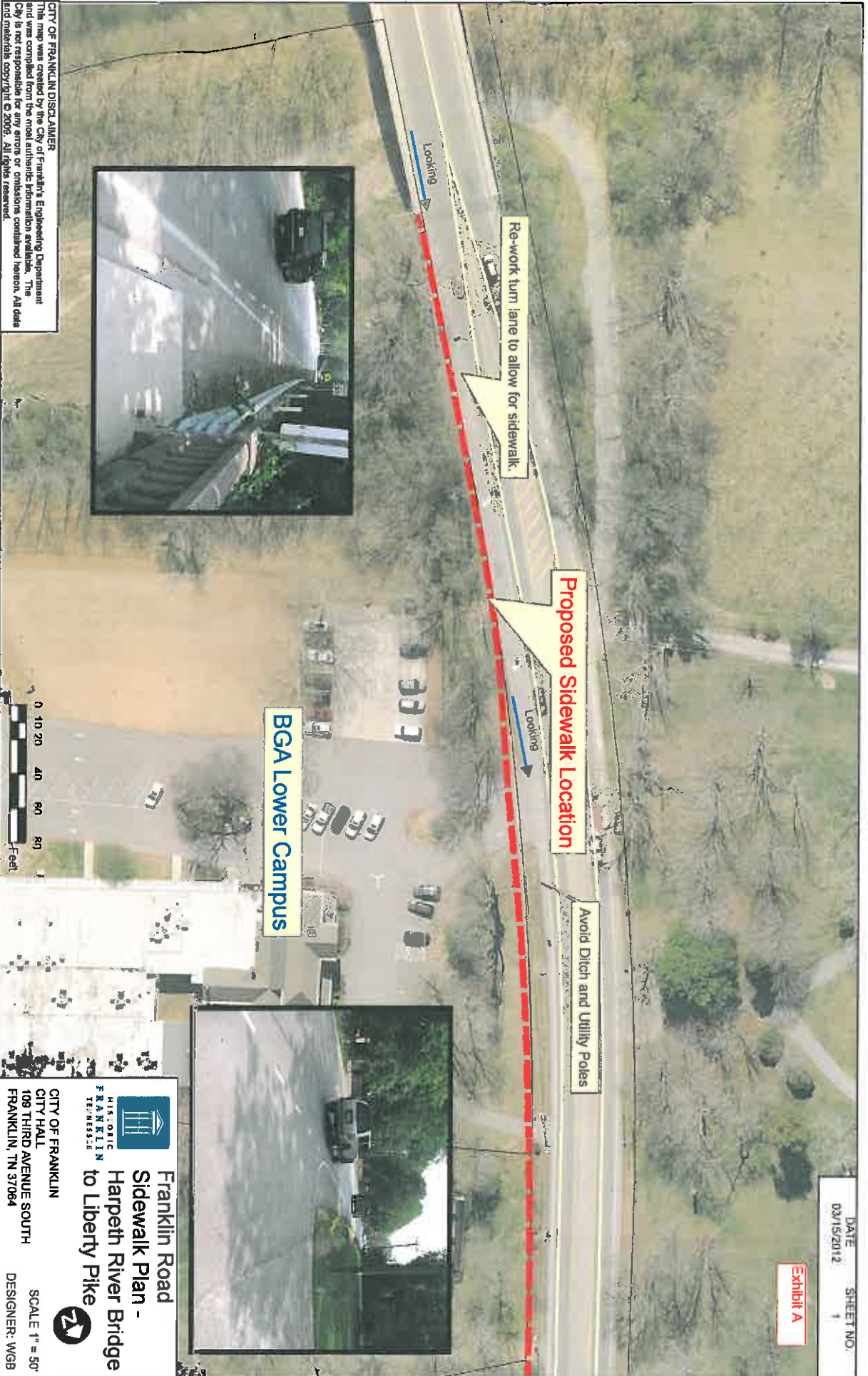
*Cost does not include possible utility relocations

Recommendation

At this time the Engineering Department does not recommend moving forward with a sidewalk only project mainly due to the location of the proposed sidewalk and impacts it would likely have on property owners. The sidewalk only project would impact existing fences, staked stone walls, landscaping and would require additional Right-of-Way. It is thus recommended that the BOMA considering the full Franklin Rd Streetscape Project as part of a future CIP funding plan.


DATE: 03/15/2012
SHEET NO. 1

Exhibit A



CITY OF FRANKLIN DISCLAIMER
This map was created by the City of Franklin's Engineering Department and was compiled from the most accurate information available. The City is not responsible for any errors or omissions contained hereon. All data and materials copyright © 2009. All rights reserved.


Franklin Road
Sidewalk Plan -
Harpeth River Bridge
to Liberty Pike



MIS.OTIC
FRANKLIN
TENNESSEE

CITY OF FRANKLIN
CITY HALL
109 THIRD AVENUE SOUTH
FRANKLIN, TN 37064

SCALE 1" = 50'
DESIGNER: WGB



BGA Lower Campus

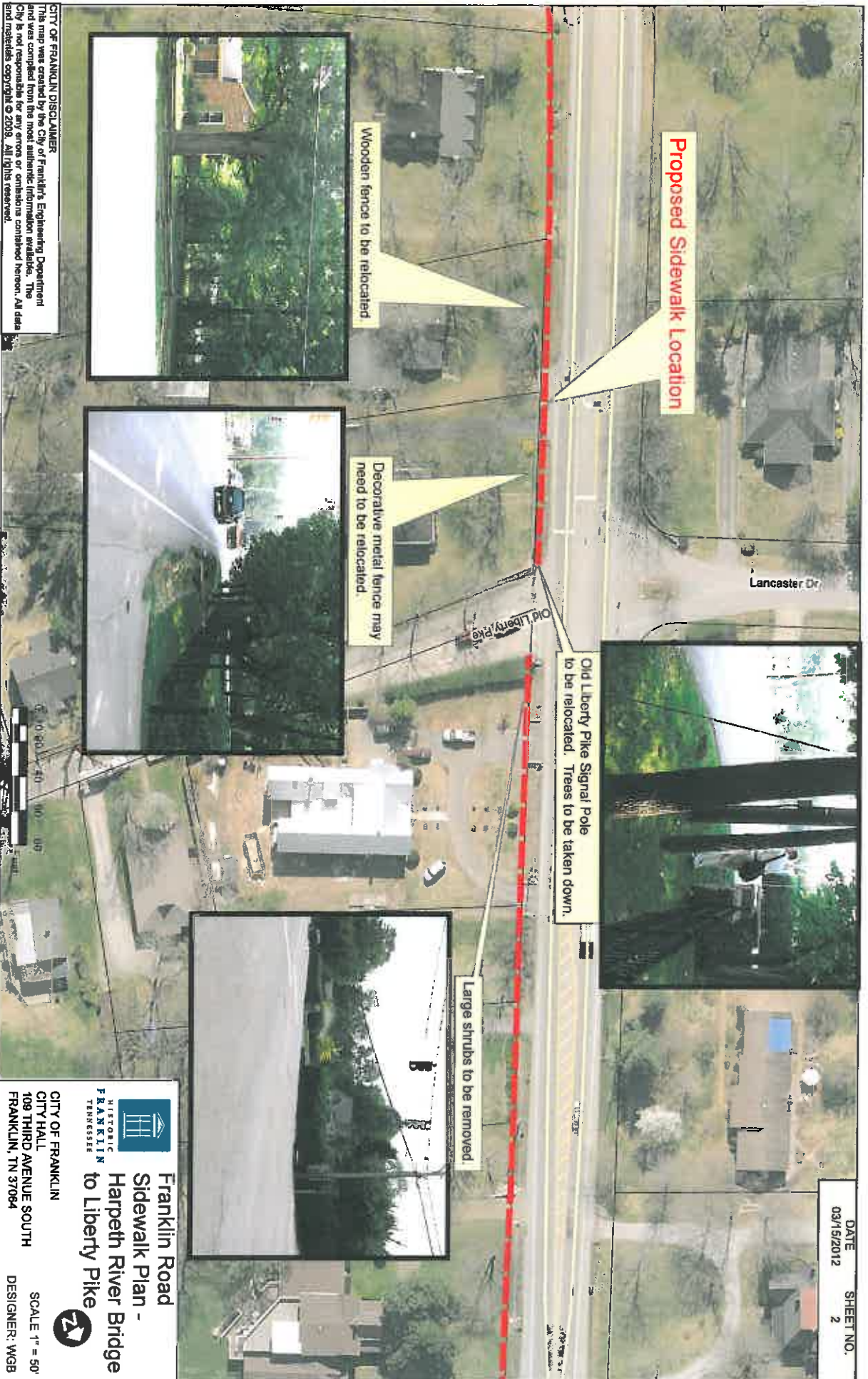
Proposed Sidewalk Location

Re-work turn lane to allow for sidewalk.

Avoid Ditch and Utility Poles

Looking

Looking



**Franklin Road
Sidewalk Plan -
Harpeth River Bridge
to Liberty Pike**

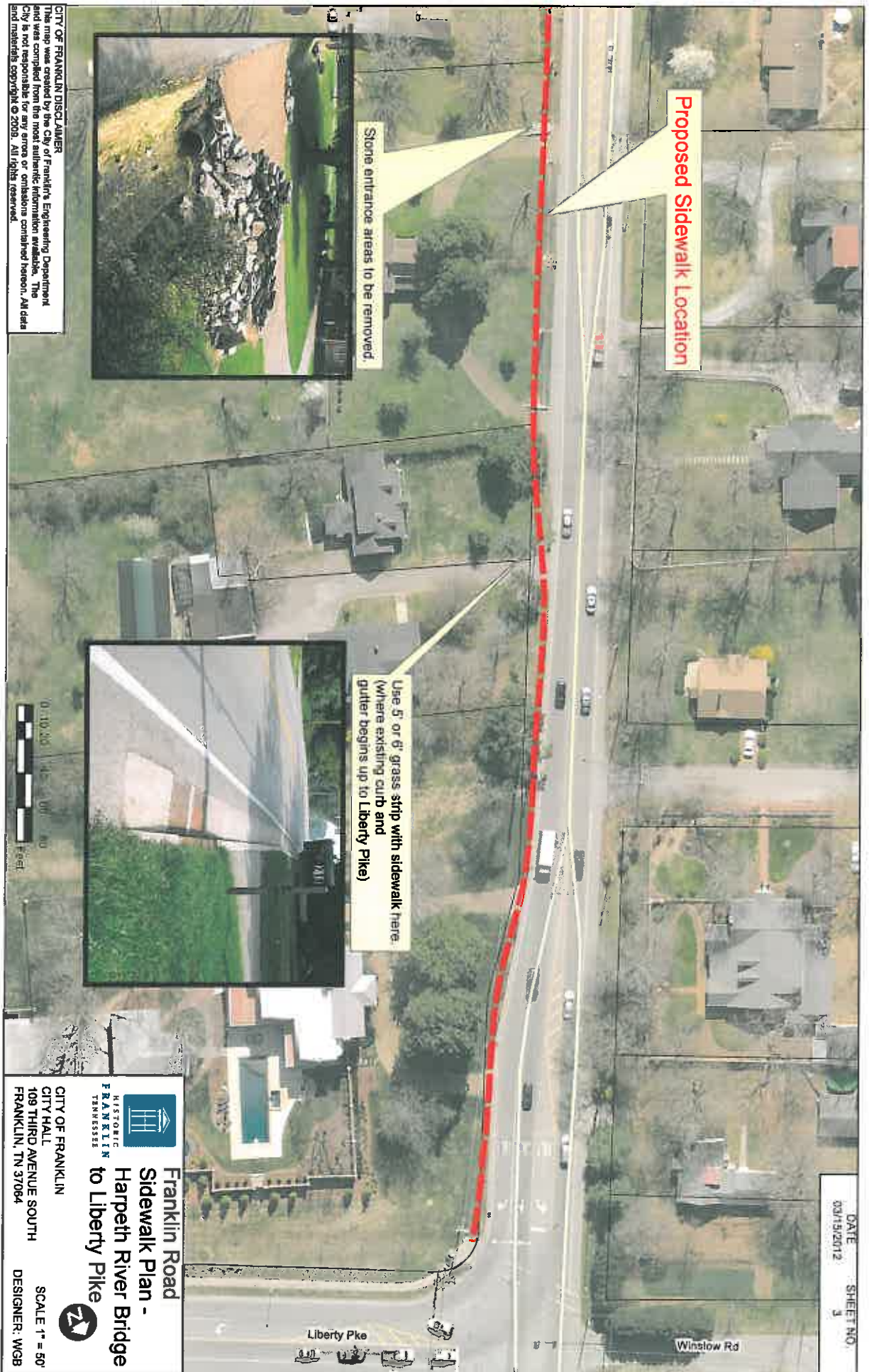

HISTORIC
FRANKLIN
TENNESSEE

CITY OF FRANKLIN
CITY HALL
109 THIRD AVENUE SOUTH
FRANKLIN, TN 37064

SCALE 1" = 50'
DESIGNER: WGB



CITY OF FRANKLIN DISCLAIMER
This map was created by the City of Franklin's Engineering Department and was compiled from the most accurate information available. The City is not responsible for any errors or omissions contained herein. All data and materials copyright © 2008. All rights reserved.



DATE: 03/15/2012
 SHEET NO: 3

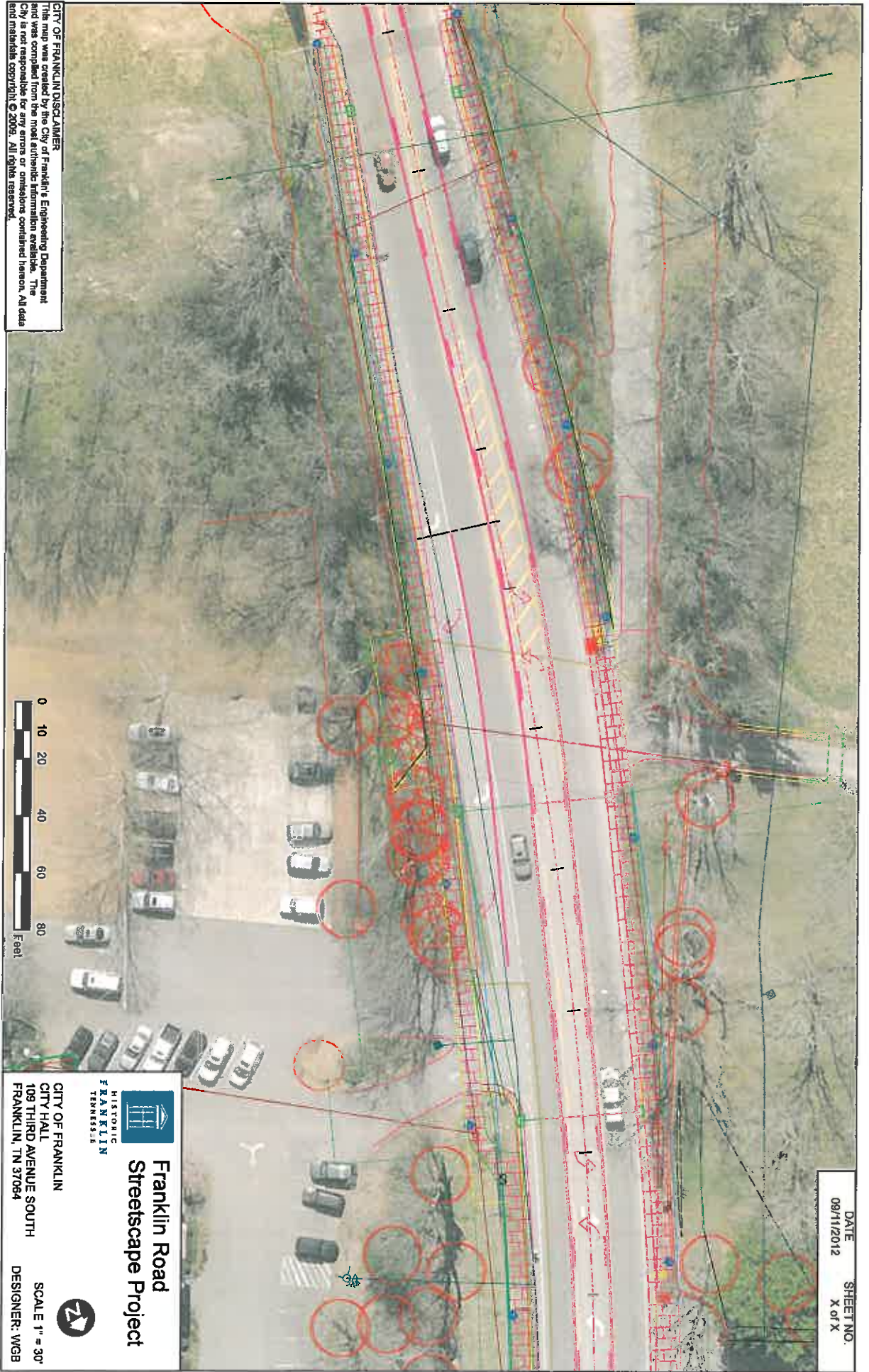
**Franklin Road -
 Sidewalk Plan -
 Harpeth River Bridge
 to Liberty Pike**

CITY OF FRANKLIN
 HISTORIC
 FRANKLIN
 TENNESSEE

CITY HALL
 109 THIRD AVENUE SOUTH
 FRANKLIN, TN 37064

SCALE: 1" = 50'
 DESIGNER: WGB


CITY OF FRANKLIN DISCLAIMER
 This map was created by the City of Franklin's Engineering Department and was compiled from the most authentic information available. The City is not responsible for any errors or omissions contained herein. All data and materials copyright © 2009. All rights reserved.

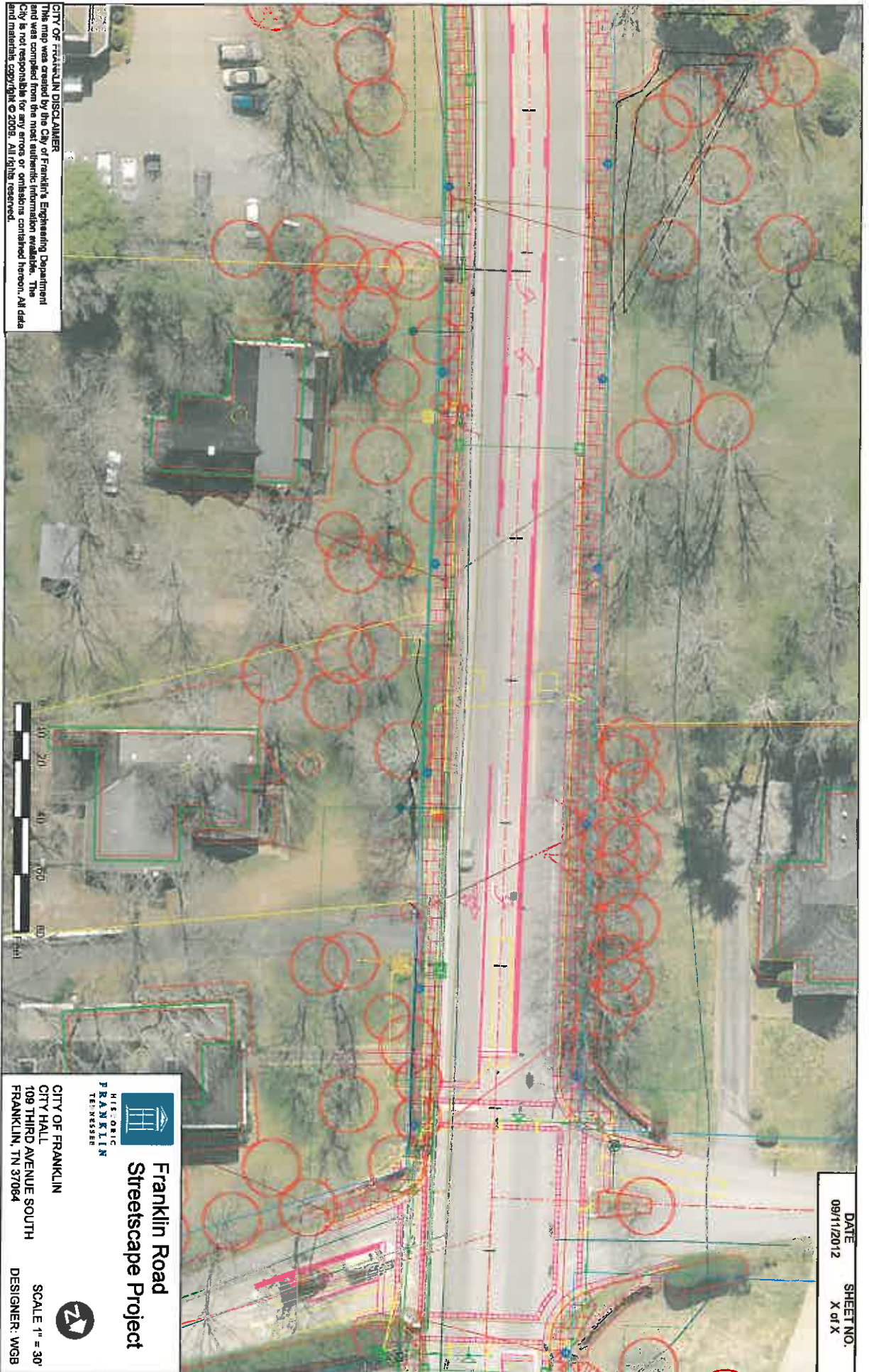


DATE 09/11/2012
 SHEET NO. X of X

CITY OF FRANKLIN DISCLAIMER
 This map was created by the City of Franklin's Engineering Department and was compiled from the most authentic information available. The City is not responsible for any errors or omissions contained hereon. All data and materials copyright © 2009. All rights reserved.





Franklin Road Streetscape Project
 CITY OF FRANKLIN
 CITY HALL
 109 THIRD AVENUE SOUTH
 FRANKLIN, TN 37064
 SCALE 1" = 30'
 DESIGNER: WGB



CITY OF FRANKLIN DISCLAIMER
This map was created by the City of Franklin's Engineering Department and was compiled from the most authentic information available. The City is not responsible for any errors or omissions contained hereon. All data and materials copyright © 2009. All rights reserved.


DATE: 09/11/2012
SHEET NO.: X of X

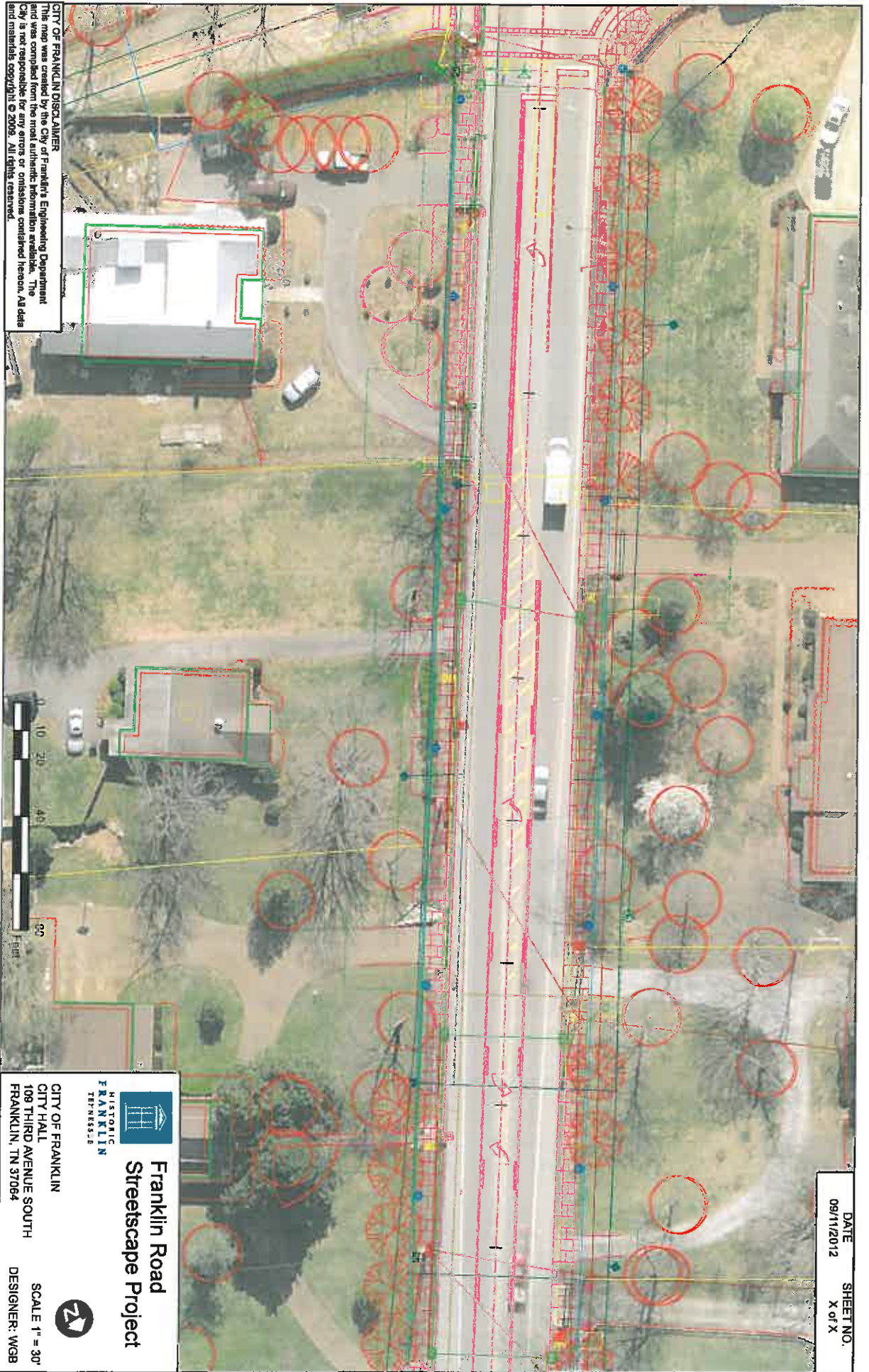

HIE, ORIG
FRANKLIN
TENNESSEE

**Franklin Road
Streetscape Project**

CITY OF FRANKLIN
CITY HALL
109 THIRD AVENUE SOUTH
FRANKLIN, TN 37064

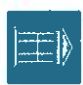
SCALE: 1" = 30'
DESIGNER: WGB

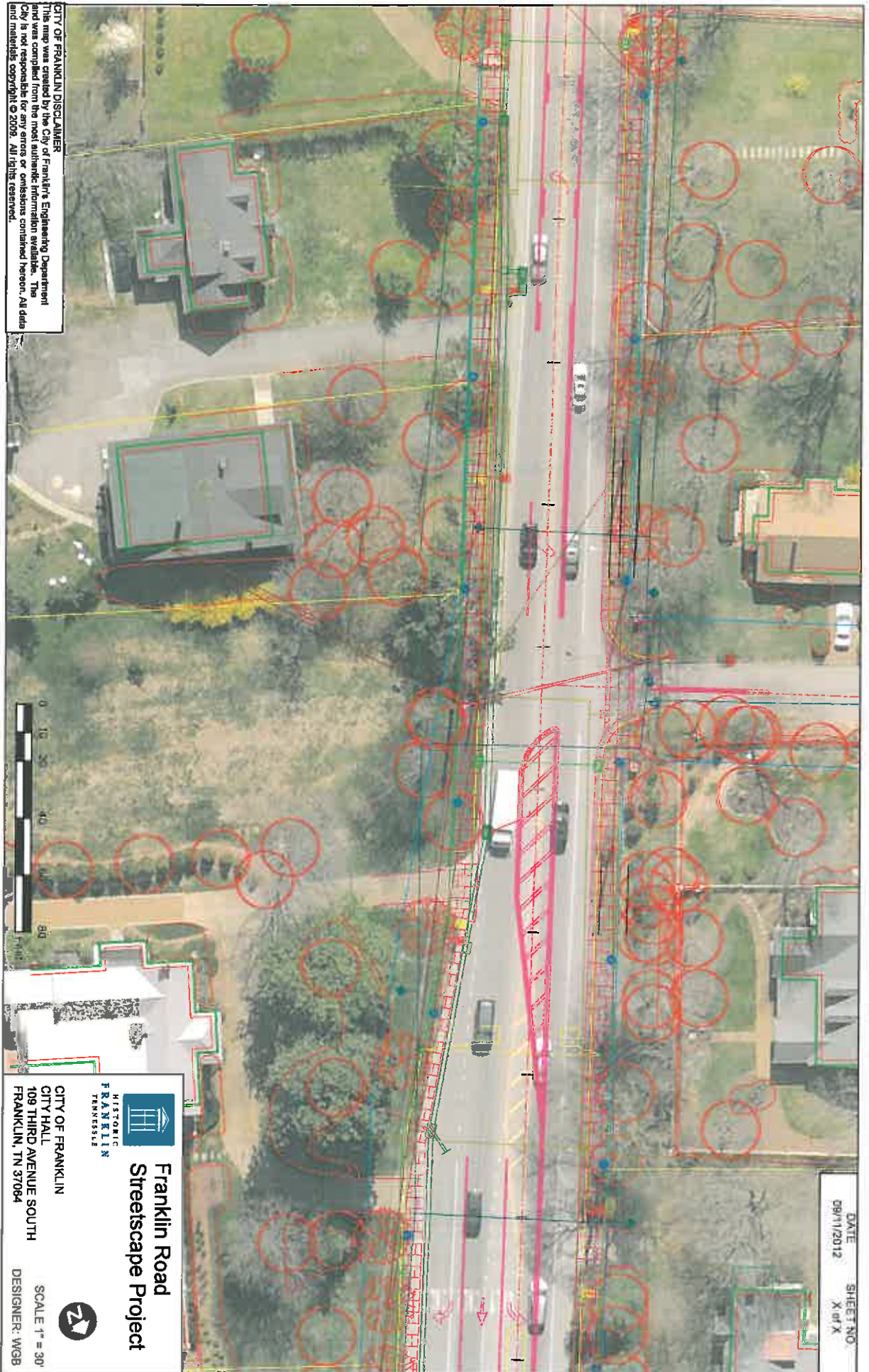




CITY OF FRANKLIN DISCLAIMER
 This map was created by the City of Franklin's Engineering Department and was compiled from the most authentic information available. The City is not responsible for any errors or omissions contained hereon. All data and materials copyright © 2009. All rights reserved.

DATE: 09/11/2012
 SHEET NO.: X of X

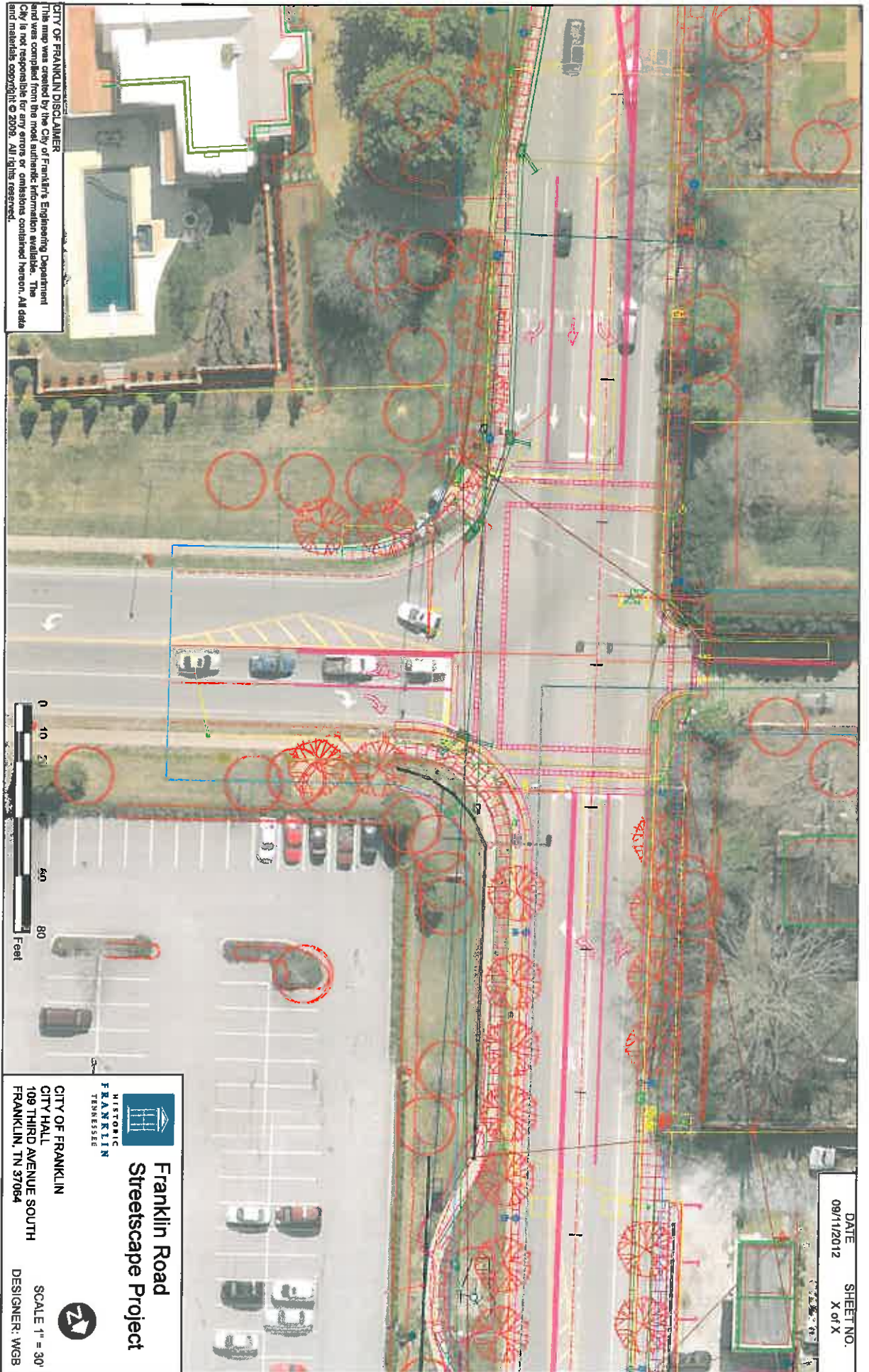

Franklin Road
Streetscape Project
 CITY OF FRANKLIN
 CITY HALL
 109 THIRD AVENUE SOUTH
 FRANKLIN, TN 37064
 SCALE 1" = 30'
 DESIGNER: WGB



DATE: 09/11/2012
 SHEET NO: X of X

CITY OF FRANKLIN DISCLAIMER
 This map was created by the City of Franklin's Engineering Department and was compiled from the most authentic information available. The City is not responsible for any errors or omissions contained hereon. All data and materials copyright © 2009. All rights reserved.


Historic Franklin Tennessee
Franklin Road Streetscape Project
 CITY OF FRANKLIN
 CITY HALL
 109 THIRD AVENUE SOUTH
 FRANKLIN, TN 37064
 SCALE: 1" = 30'
 DESIGNER: WGB



CITY OF FRANKLIN DISCLAIMER
This map was created by the City of Franklin's Engineering Department and was compiled from the most accurate information available. The City is not responsible for any errors or omissions contained hereon. All data and materials copyright © 2009. All rights reserved.

DATE: 08/11/2012
SHEET NO.: X of X


Franklin Road Streetscape Project
 CITY OF FRANKLIN
 CITY HALL
 109 THIRD AVENUE SOUTH
 FRANKLIN, TN 37064
 SCALE 1" = 30'
 DESIGNER: WGB

CITY OF FRANKLIN, TENNESSEE

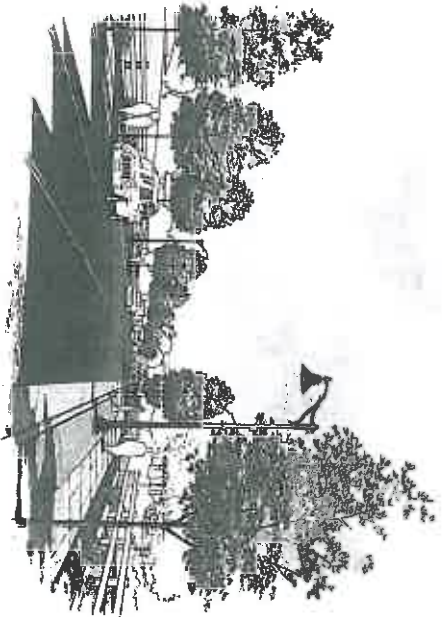
FRANKLIN CORRIDOR AND CONNECTOR STREETS ECONOMIC DEVELOPMENT PROJECT

SEGMENT ONE - FRANKLIN ROAD

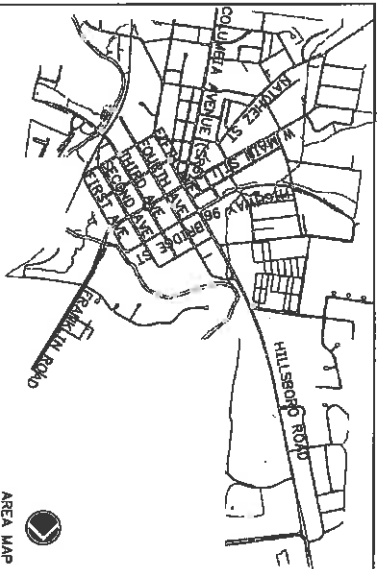
PROJECT LIMITS:

INDEX OF SHEETS

1.0	TITLE SHEET
2.0-2.3	SUMMARY OF QUANTITIES
3.0-3.1	PROPERTY MAP AND ACQUISITION TABLE
4.0-4.2	TYPICAL SECTIONS
5.0-5.1	GENERAL NOTES
6.0-6.4	PRESENT LAYOUTS
7.0-7.4	DEMOLITION PLANS
8.0-8.4	PROPOSED LAYOUTS
9.0-9.4	UTILITY LAYOUTS / PROPOSED PROFILES
10.0	NOT USED
11.0-11.4	EXISTING GRADING PLANS
12.0-12.4	PROPOSED GRADING PLANS
13.0-13.3	EROSION AND SEDIMENT CONTROL PLANS
14.0-14.6	TRAFFIC CONTROL PLANS
15.0-15.5	SIGNING AND PAVEMENT MARKING PLANS
16.0-16.5	PLANTING PLANS & DETAILS
17.0	NOT USED
18.0-18.4	TRAFFIC SIGNAL PLANS
19.0-19.2	DETAIL SHEETS
20.0-20.4	LIGHTING PLANS
21.0-21.10	DISTRIBUTION PLANS
22.0-22.24	CROSS SECTIONS



PROJECT LENGTH:



AREA MAP

SPECIAL NOTES

PROPOSALS MAY BE REQUESTED BY THE CITY OF FRANKLIN IF ANY OF THE LIMIT PRICES CONTAINED HEREIN ARE DEEMED UNREASONABLY EXCESSIVE OR BELOW THE REASONABLE COST ANALYSIS VALUE.

THIS PROJECT TO BE CONSTRUCTED UNDER THE STANDARD SPECIFICATIONS OF THE CITY OF FRANKLIN, TENNESSEE. ALL SPECIFICATIONS AND SPECIAL PROVISIONS CONTAINED IN THE PLANS AND IN THE PROPOSAL CONTRACT.

CITY OF FRANKLIN ENGINEERING DEPARTMENT **ERIC A. GARDNER, P.E.**
 DIRECTOR OF ENGINEERING

DESIGNED BY _____
 DRAWN BY _____
 CHECKED BY _____

E. G. & G., INC. LANDSCAPE ARCHITECTURE-ENGINEERING-PLANNING
 ARDOR, OHIO (530) 575-2780

PETERS, TSCHANITZ & ASSOCIATES, INC. CONSULTING ELECTRICAL ENGINEERS
 ARDOR, OHIO (530) 585-3702

ELKINS SURVEY COMPANY SURVEYOR
 MANFRESSBURG, TENNESSEE (615) 897-8825

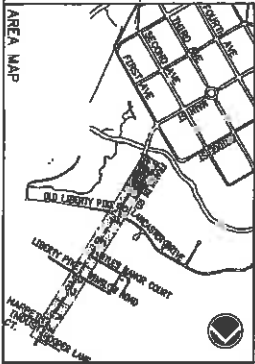
APPROVED: **DAVID PARKER, P.E.** DATE _____
 CITY OF FRANKLIN PUBLIC WORKS DIRECTOR

NOTES:
1. SEE SHEET 3.1, GENERAL NOTES FOR LEGEND

POINT NO.	STATION	OFFSET & SIDE	POINT NO.	STATION	OFFSET & SIDE
70	70+89.08	25.1'	70	70+89.08	25.1'
71	71+73.30	28.2'	71	71+73.30	28.2'
72	72+48.31	31.2'	72	72+48.31	31.2'
73	73+16.27	31.3'	73	73+16.27	31.3'
74	73+21.43	27.6'	74	73+21.43	27.6'
75	73+25.93	38.0'	75	73+25.93	38.0'
76	74+00.00	39.3'	76	74+00.00	39.3'
77	74+50.41		77	74+50.41	
78	74+57.32	40.0'	78	74+57.32	40.0'
79	75+06.45	28.2'	79	75+06.45	28.2'
80	75+18.62	27.5'	80	75+18.62	27.5'

CURVE DATA

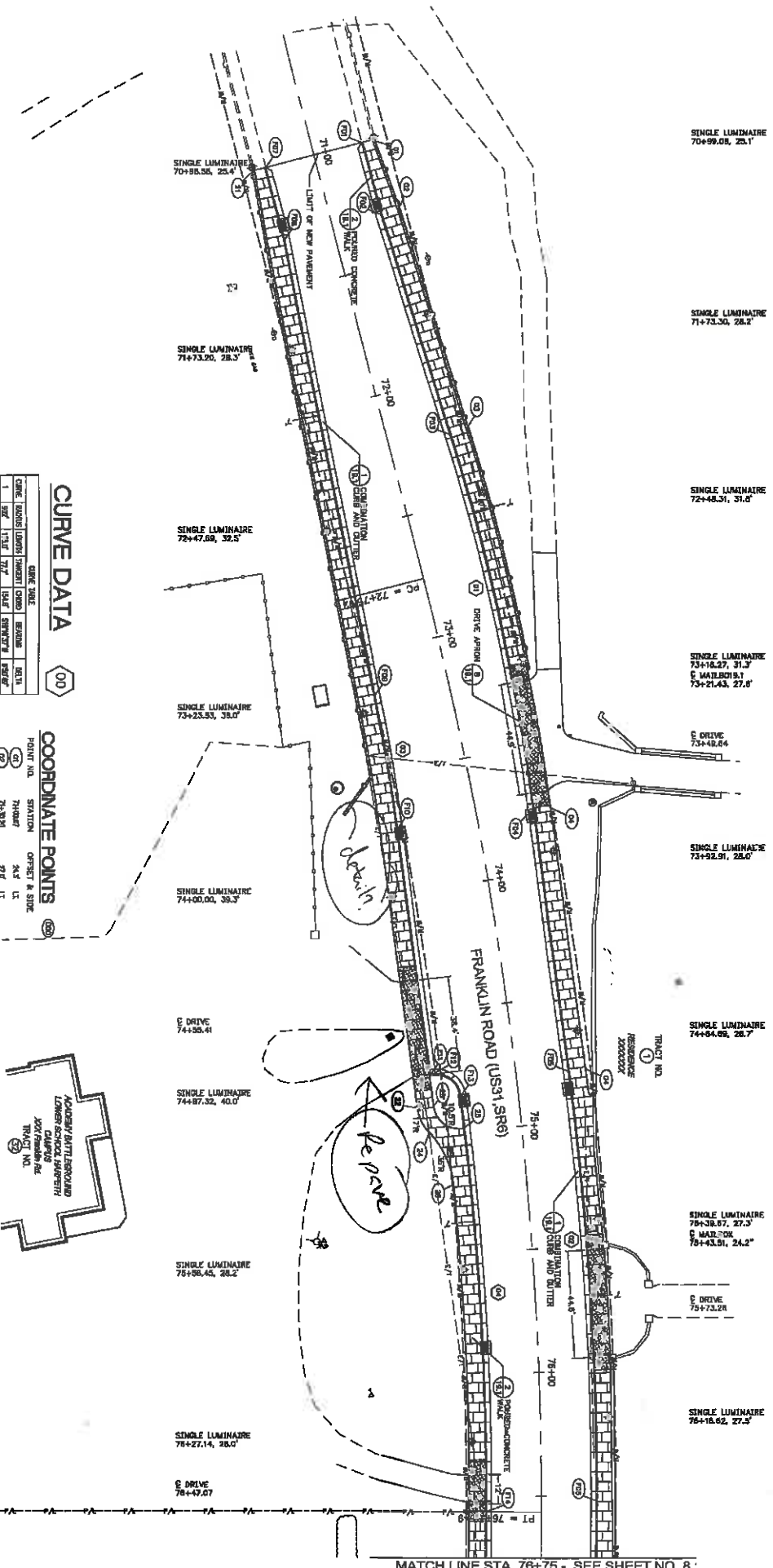
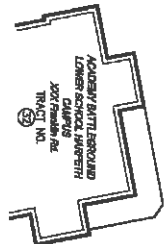
CHORD BEARS	LENGTH	TANGENT	CHORD	BEARING	DELTA
1	173.32	71.7	173.32	90.00	90.00
2	173.32	71.7	173.32	90.00	90.00
3	173.32	71.7	173.32	90.00	90.00
4	173.32	71.7	173.32	90.00	90.00
5	173.32	71.7	173.32	90.00	90.00
6	173.32	71.7	173.32	90.00	90.00
7	173.32	71.7	173.32	90.00	90.00
8	173.32	71.7	173.32	90.00	90.00
9	173.32	71.7	173.32	90.00	90.00
10	173.32	71.7	173.32	90.00	90.00
11	173.32	71.7	173.32	90.00	90.00
12	173.32	71.7	173.32	90.00	90.00
13	173.32	71.7	173.32	90.00	90.00
14	173.32	71.7	173.32	90.00	90.00
15	173.32	71.7	173.32	90.00	90.00
16	173.32	71.7	173.32	90.00	90.00
17	173.32	71.7	173.32	90.00	90.00
18	173.32	71.7	173.32	90.00	90.00
19	173.32	71.7	173.32	90.00	90.00
20	173.32	71.7	173.32	90.00	90.00
21	173.32	71.7	173.32	90.00	90.00
22	173.32	71.7	173.32	90.00	90.00
23	173.32	71.7	173.32	90.00	90.00
24	173.32	71.7	173.32	90.00	90.00
25	173.32	71.7	173.32	90.00	90.00
26	173.32	71.7	173.32	90.00	90.00
27	173.32	71.7	173.32	90.00	90.00
28	173.32	71.7	173.32	90.00	90.00
29	173.32	71.7	173.32	90.00	90.00
30	173.32	71.7	173.32	90.00	90.00
31	173.32	71.7	173.32	90.00	90.00
32	173.32	71.7	173.32	90.00	90.00
33	173.32	71.7	173.32	90.00	90.00
34	173.32	71.7	173.32	90.00	90.00
35	173.32	71.7	173.32	90.00	90.00
36	173.32	71.7	173.32	90.00	90.00
37	173.32	71.7	173.32	90.00	90.00
38	173.32	71.7	173.32	90.00	90.00
39	173.32	71.7	173.32	90.00	90.00
40	173.32	71.7	173.32	90.00	90.00



FRANKLIN CORRIDOR AND CONNECTOR STREETS ECONOMIC DEVELOPMENT PROJECT

E. G. & G., Inc.
 280 SOUTH MAIN STREET, SUITE 200, ARROW, OHIO 44801 / (330) 376-2700 FAX (330) 376-2701
 www.egandg.com
 11/11/09 © E. G. & G., Inc.

Prepared by E.G. & G.	Checked by E.G. & G.	Scale Title
Drawn by E.G. & G.	Designed by E.G. & G.	PROPOSED LAYOUT
DATE: MARCH, 2009	PROJECT NO.: 24012.14	FRANKLIN ROAD (US31 SR6)
PROJECT INC.	SHEET NO.	5/16, 15+00 TO 76+50
		8.0



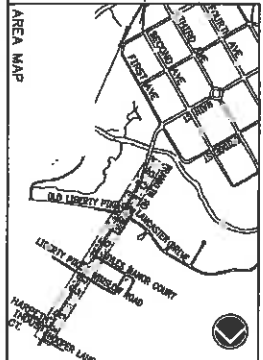
MATCH LINE STA. 76+75 - SEE SHEET NO. 8.

MATCH LINE STA. 76+75 - SEE SHEET NO. 8.0

NOTES:
1. SEE SHEET 5.1, GENERAL NOTES, FOR LEGEND

COORDINATE POINTS

POINT NO.	STATION	OFFSET & SIDE
20	77+00.00	20.0' LT
21	77+00.00	20.0' LT
22	77+00.00	20.0' LT
23	77+00.00	20.0' LT
24	77+00.00	20.0' LT
25	77+00.00	20.0' LT
26	77+00.00	20.0' LT
27	77+00.00	20.0' LT
28	77+00.00	20.0' LT
29	77+00.00	20.0' LT
30	77+00.00	20.0' LT
31	77+00.00	20.0' LT
32	77+00.00	20.0' LT
33	77+00.00	20.0' LT
34	77+00.00	20.0' LT
35	77+00.00	20.0' LT
36	77+00.00	20.0' LT
37	77+00.00	20.0' LT
38	77+00.00	20.0' LT
39	77+00.00	20.0' LT
40	77+00.00	20.0' LT



FRANKLIN CORRIDOR AND CONNECTOR STREETS ECONOMIC DEVELOPMENT PROJECT

E. G. & G., Inc.
 Landscaping Architecture Planning Engineering
 300 SOUTH MAIN STREET, SUITE 200, AUBURN, MA 01501 / (508) 226-2200 FAX: (508) 226-2201

CURVE DATA

LINE NAME	CHORD	INSIDE	LEAVE	WARRANT	CHORD	BEARING	BELEN
1	30.0'	27.7'	N 4.0° E	N 75.0° W	27.7'	75.0°	30.0'
2	30.0'	27.7'	N 4.0° E	N 75.0° W	27.7'	75.0°	30.0'
3	30.0'	27.7'	N 4.0° E	N 75.0° W	27.7'	75.0°	30.0'
4	30.0'	27.7'	N 4.0° E	N 75.0° W	27.7'	75.0°	30.0'
5	30.0'	27.7'	N 4.0° E	N 75.0° W	27.7'	75.0°	30.0'
6	30.0'	27.7'	N 4.0° E	N 75.0° W	27.7'	75.0°	30.0'
7	30.0'	27.7'	N 4.0° E	N 75.0° W	27.7'	75.0°	30.0'
8	30.0'	27.7'	N 4.0° E	N 75.0° W	27.7'	75.0°	30.0'
9	30.0'	27.7'	N 4.0° E	N 75.0° W	27.7'	75.0°	30.0'
10	30.0'	27.7'	N 4.0° E	N 75.0° W	27.7'	75.0°	30.0'

Revisions:

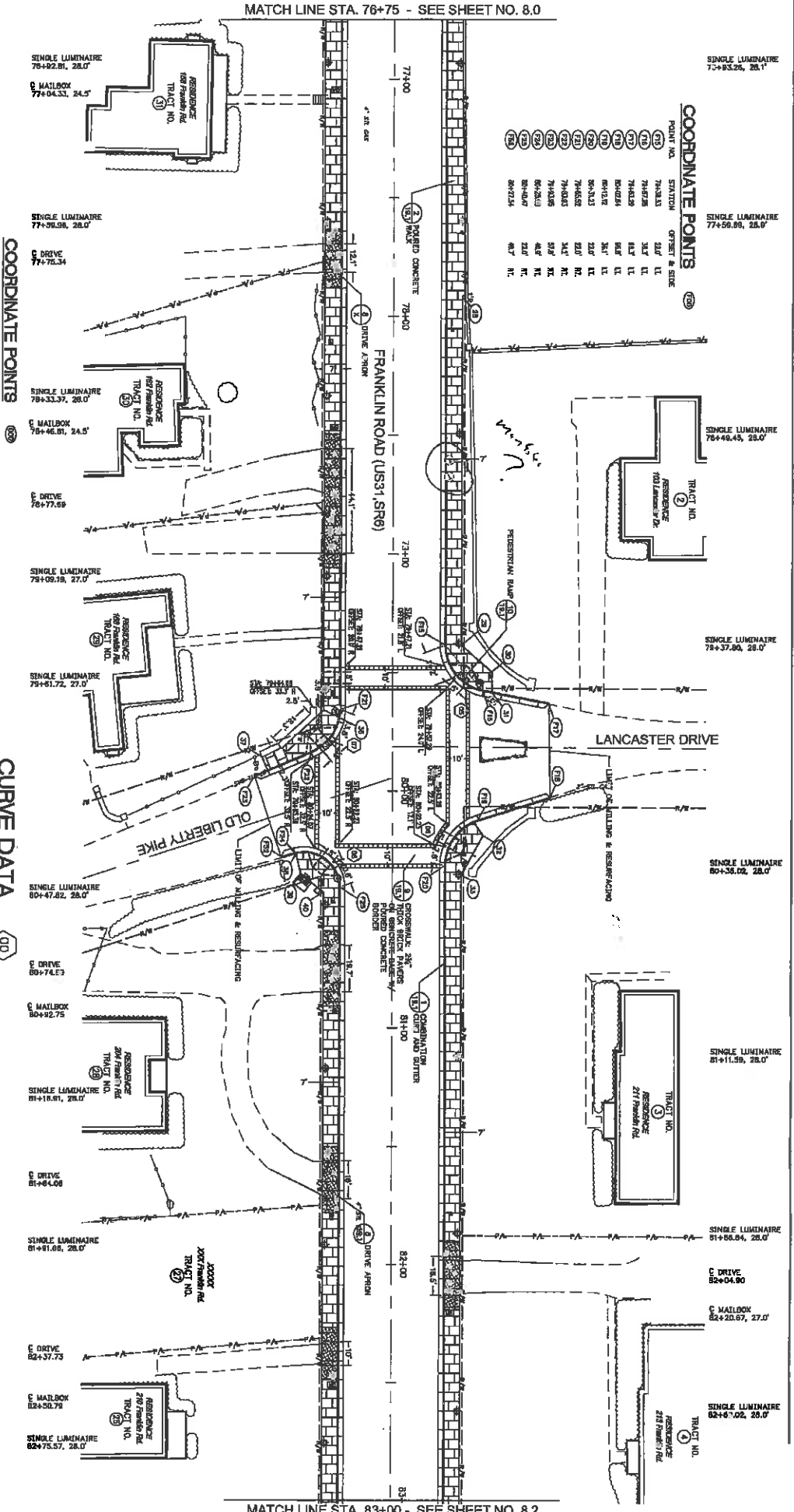
Revised By	Date	Description

Designed by: **SK**
 Drawn by: **SK**
 Checked by: **SK**
MARCH, 2008

Project No: **24012.14**

Sheet Title: **FRANKLIN ROAD (US31 SR6) PROPOSED LAYOUT**
 Scale: **5/8" = 1' @ 24" x 36"**

Start No: **8.1**



COORDINATE POINTS

POINT NO.	STATION	OFFSET & SIDE
73	76+83.26	28.0' LT
74	76+83.26	28.0' LT
75	76+83.26	28.0' LT
76	76+83.26	28.0' LT
77	76+83.26	28.0' LT
78	76+83.26	28.0' LT
79	76+83.26	28.0' LT
80	76+83.26	28.0' LT
81	76+83.26	28.0' LT
82	76+83.26	28.0' LT
83	76+83.26	28.0' LT
84	76+83.26	28.0' LT
85	76+83.26	28.0' LT
86	76+83.26	28.0' LT
87	76+83.26	28.0' LT
88	76+83.26	28.0' LT
89	76+83.26	28.0' LT
90	76+83.26	28.0' LT
91	76+83.26	28.0' LT
92	76+83.26	28.0' LT
93	76+83.26	28.0' LT
94	76+83.26	28.0' LT
95	76+83.26	28.0' LT
96	76+83.26	28.0' LT
97	76+83.26	28.0' LT
98	76+83.26	28.0' LT
99	76+83.26	28.0' LT
100	76+83.26	28.0' LT

MATCH LINE STA. 83+00 - SEE SHEET NO. 8.2

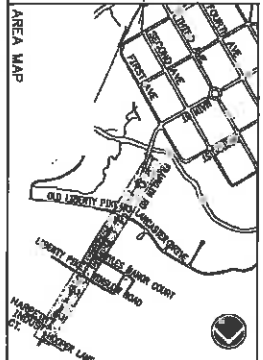
MATCH LINE STA. 83+00 - SEE SHEET NO. 8.1

CURVE DATA

LINE	START	END	LENGTH	PC	PT	PI	PT	EC	CHORD BEARING	CHORD DIST.
1	83+00.00	83+43.73	43.73	83+00.00	83+11.88	83+23.71	83+35.54	83+43.73	S100°00'00"E	43.73

COORDINATE POINTS

POINT NO.	STATION	EASTING	NORTHING
1	83+00.00	1000.00	1000.00
2	83+05.00	1000.00	1005.00
3	83+10.00	1000.00	1010.00
4	83+15.00	1000.00	1015.00
5	83+20.00	1000.00	1020.00
6	83+25.00	1000.00	1025.00
7	83+30.00	1000.00	1030.00
8	83+35.00	1000.00	1035.00
9	83+40.00	1000.00	1040.00
10	83+43.73	1000.00	1043.73



FRANKLIN CORRIDOR AND CONNECTOR STREETS ECONOMIC DEVELOPMENT PROJECT

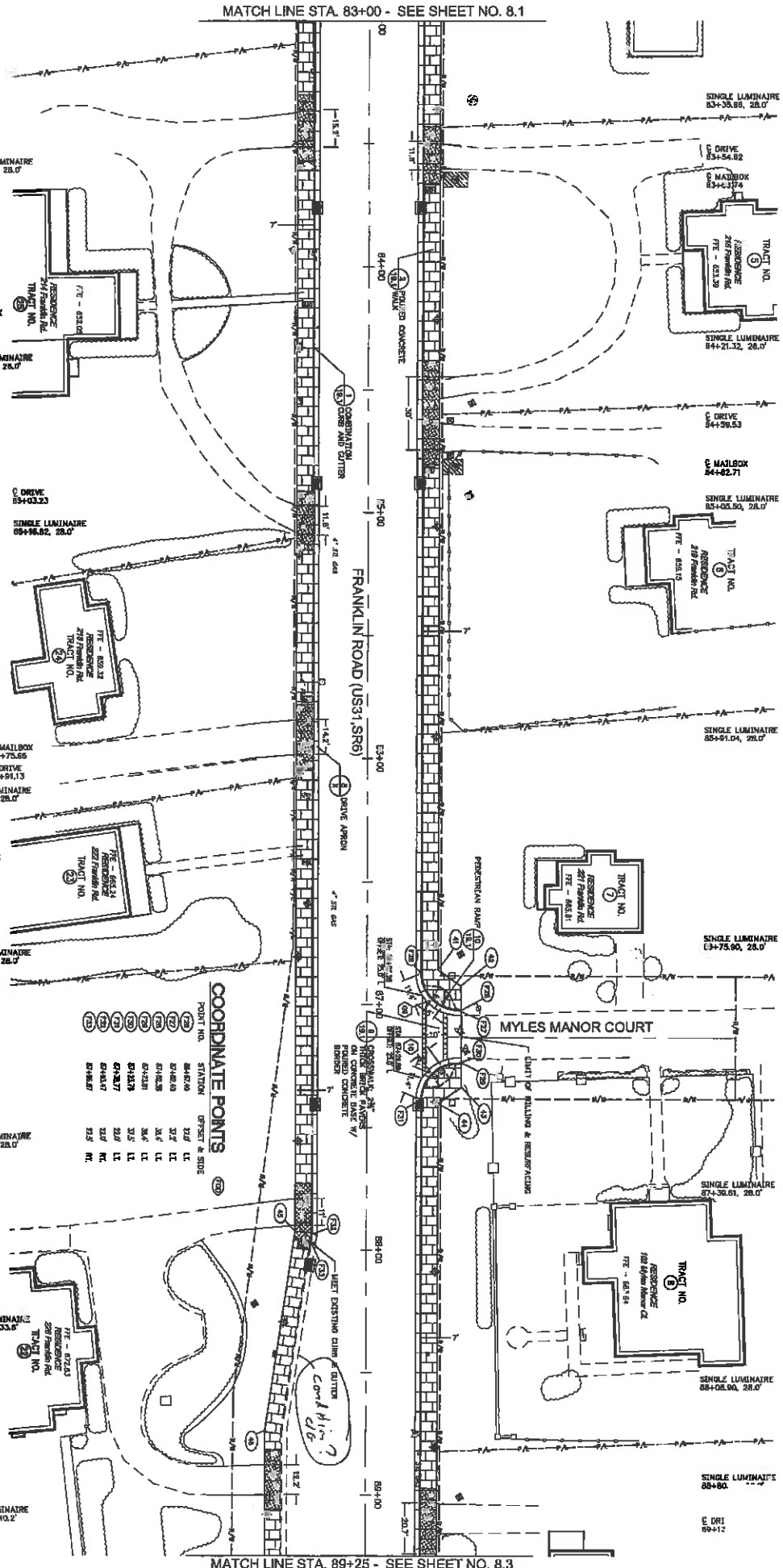
E. G. & G., Inc.
 Landscape Architecture and Planning
 300 SOUTH MAIN STREET, SUITE 501, ANTON, MO 64001 | (660) 236-2900 FAX (660) 236-2901

Scale: 1" = 20'

Project No. 24012.14

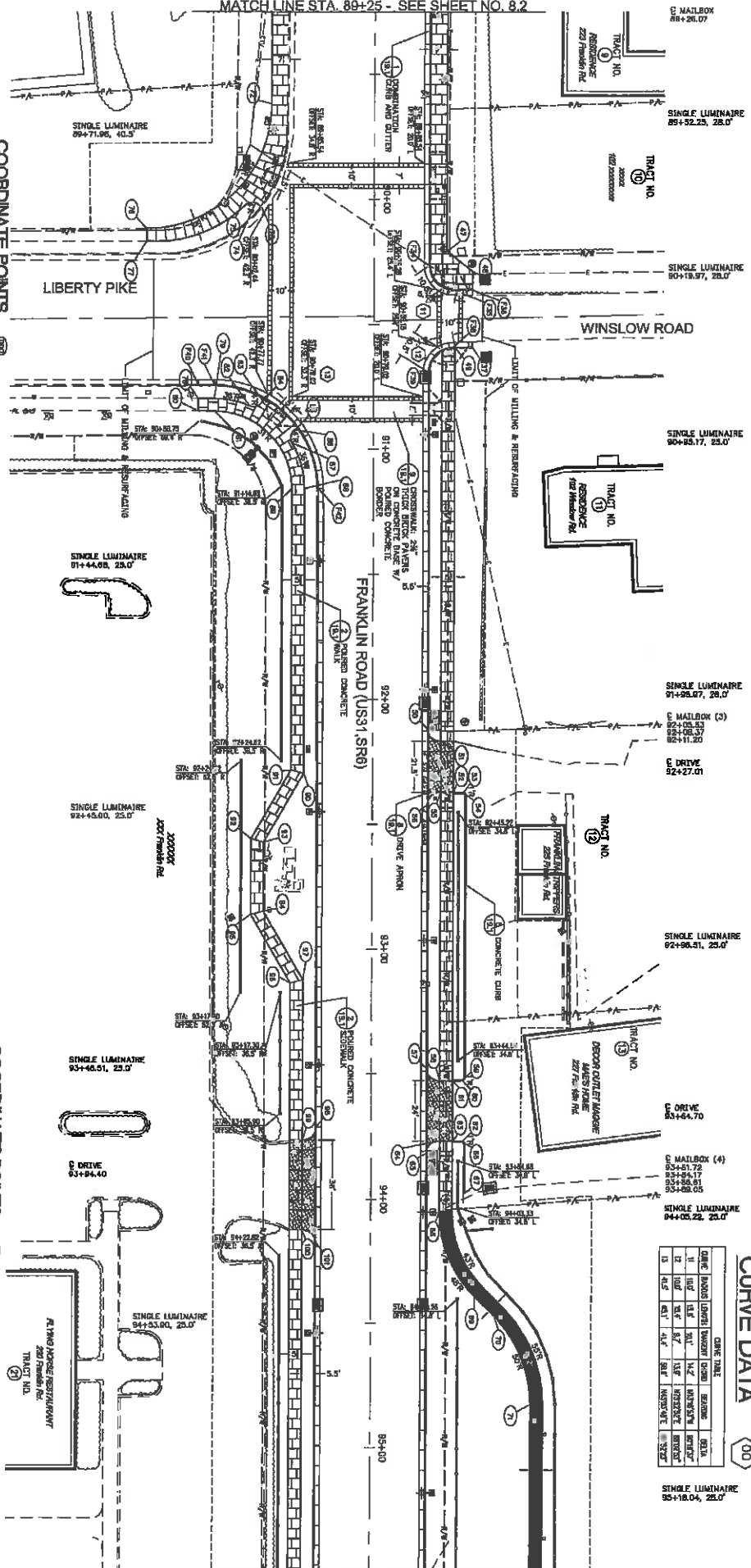
Scale: 1" = 20'

Sheet No. 8.2



MATCH LINE STA. 89+25 - SEE SHEET NO. 8.3

MATCH LINE STA. 89+25 - SEE SHEET NO. 8.2



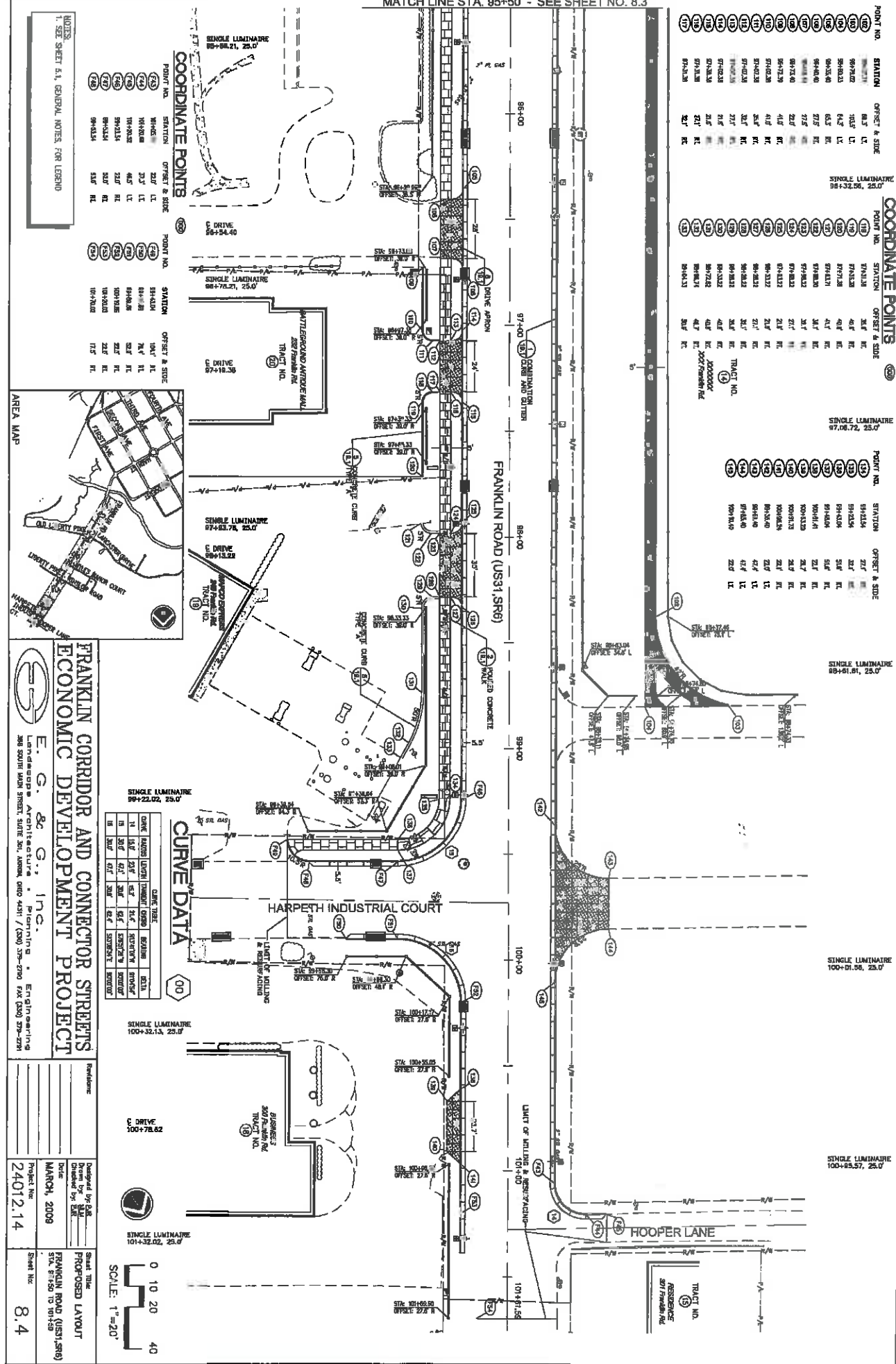
COORDINATE POINTS

POINT NO.	STATION	OFFSET & SIDE	POINT NO.	STATION	OFFSET & SIDE
1	89+25.00	2.00' LT	101	89+25.00	2.00' LT
2	89+25.00	2.00' LT	102	89+25.00	2.00' LT
3	89+25.00	2.00' LT	103	89+25.00	2.00' LT
4	89+25.00	2.00' LT	104	89+25.00	2.00' LT
5	89+25.00	2.00' LT	105	89+25.00	2.00' LT
6	89+25.00	2.00' LT	106	89+25.00	2.00' LT
7	89+25.00	2.00' LT	107	89+25.00	2.00' LT
8	89+25.00	2.00' LT	108	89+25.00	2.00' LT
9	89+25.00	2.00' LT	109	89+25.00	2.00' LT
10	89+25.00	2.00' LT	110	89+25.00	2.00' LT
11	89+25.00	2.00' LT	111	89+25.00	2.00' LT
12	89+25.00	2.00' LT	112	89+25.00	2.00' LT
13	89+25.00	2.00' LT	113	89+25.00	2.00' LT
14	89+25.00	2.00' LT	114	89+25.00	2.00' LT
15	89+25.00	2.00' LT	115	89+25.00	2.00' LT
16	89+25.00	2.00' LT	116	89+25.00	2.00' LT
17	89+25.00	2.00' LT	117	89+25.00	2.00' LT
18	89+25.00	2.00' LT	118	89+25.00	2.00' LT
19	89+25.00	2.00' LT	119	89+25.00	2.00' LT
20	89+25.00	2.00' LT	120	89+25.00	2.00' LT
21	89+25.00	2.00' LT	121	89+25.00	2.00' LT
22	89+25.00	2.00' LT	122	89+25.00	2.00' LT
23	89+25.00	2.00' LT	123	89+25.00	2.00' LT
24	89+25.00	2.00' LT	124	89+25.00	2.00' LT
25	89+25.00	2.00' LT	125	89+25.00	2.00' LT
26	89+25.00	2.00' LT	126	89+25.00	2.00' LT
27	89+25.00	2.00' LT	127	89+25.00	2.00' LT
28	89+25.00	2.00' LT	128	89+25.00	2.00' LT
29	89+25.00	2.00' LT	129	89+25.00	2.00' LT
30	89+25.00	2.00' LT	130	89+25.00	2.00' LT
31	89+25.00	2.00' LT	131	89+25.00	2.00' LT
32	89+25.00	2.00' LT	132	89+25.00	2.00' LT
33	89+25.00	2.00' LT	133	89+25.00	2.00' LT
34	89+25.00	2.00' LT	134	89+25.00	2.00' LT
35	89+25.00	2.00' LT	135	89+25.00	2.00' LT
36	89+25.00	2.00' LT	136	89+25.00	2.00' LT
37	89+25.00	2.00' LT	137	89+25.00	2.00' LT
38	89+25.00	2.00' LT	138	89+25.00	2.00' LT
39	89+25.00	2.00' LT	139	89+25.00	2.00' LT
40	89+25.00	2.00' LT	140	89+25.00	2.00' LT
41	89+25.00	2.00' LT	141	89+25.00	2.00' LT
42	89+25.00	2.00' LT	142	89+25.00	2.00' LT
43	89+25.00	2.00' LT	143	89+25.00	2.00' LT
44	89+25.00	2.00' LT	144	89+25.00	2.00' LT
45	89+25.00	2.00' LT	145	89+25.00	2.00' LT
46	89+25.00	2.00' LT	146	89+25.00	2.00' LT
47	89+25.00	2.00' LT	147	89+25.00	2.00' LT
48	89+25.00	2.00' LT	148	89+25.00	2.00' LT
49	89+25.00	2.00' LT	149	89+25.00	2.00' LT
50	89+25.00	2.00' LT	150	89+25.00	2.00' LT
51	89+25.00	2.00' LT	151	89+25.00	2.00' LT
52	89+25.00	2.00' LT	152	89+25.00	2.00' LT
53	89+25.00	2.00' LT	153	89+25.00	2.00' LT
54	89+25.00	2.00' LT	154	89+25.00	2.00' LT
55	89+25.00	2.00' LT	155	89+25.00	2.00' LT
56	89+25.00	2.00' LT	156	89+25.00	2.00' LT
57	89+25.00	2.00' LT	157	89+25.00	2.00' LT
58	89+25.00	2.00' LT	158	89+25.00	2.00' LT
59	89+25.00	2.00' LT	159	89+25.00	2.00' LT
60	89+25.00	2.00' LT	160	89+25.00	2.00' LT
61	89+25.00	2.00' LT	161	89+25.00	2.00' LT
62	89+25.00	2.00' LT	162	89+25.00	2.00' LT
63	89+25.00	2.00' LT	163	89+25.00	2.00' LT
64	89+25.00	2.00' LT	164	89+25.00	2.00' LT
65	89+25.00	2.00' LT	165	89+25.00	2.00' LT
66	89+25.00	2.00' LT	166	89+25.00	2.00' LT
67	89+25.00	2.00' LT	167	89+25.00	2.00' LT
68	89+25.00	2.00' LT	168	89+25.00	2.00' LT
69	89+25.00	2.00' LT	169	89+25.00	2.00' LT
70	89+25.00	2.00' LT	170	89+25.00	2.00' LT
71	89+25.00	2.00' LT	171	89+25.00	2.00' LT
72	89+25.00	2.00' LT	172	89+25.00	2.00' LT
73	89+25.00	2.00' LT	173	89+25.00	2.00' LT
74	89+25.00	2.00' LT	174	89+25.00	2.00' LT
75	89+25.00	2.00' LT	175	89+25.00	2.00' LT
76	89+25.00	2.00' LT	176	89+25.00	2.00' LT
77	89+25.00	2.00' LT	177	89+25.00	2.00' LT
78	89+25.00	2.00' LT	178	89+25.00	2.00' LT
79	89+25.00	2.00' LT	179	89+25.00	2.00' LT
80	89+25.00	2.00' LT	180	89+25.00	2.00' LT
81	89+25.00	2.00' LT	181	89+25.00	2.00' LT
82	89+25.00	2.00' LT	182	89+25.00	2.00' LT
83	89+25.00	2.00' LT	183	89+25.00	2.00' LT
84	89+25.00	2.00' LT	184	89+25.00	2.00' LT
85	89+25.00	2.00' LT	185	89+25.00	2.00' LT
86	89+25.00	2.00' LT	186	89+25.00	2.00' LT
87	89+25.00	2.00' LT	187	89+25.00	2.00' LT
88	89+25.00	2.00' LT	188	89+25.00	2.00' LT
89	89+25.00	2.00' LT	189	89+25.00	2.00' LT
90	89+25.00	2.00' LT	190	89+25.00	2.00' LT
91	89+25.00	2.00' LT	191	89+25.00	2.00' LT
92	89+25.00	2.00' LT	192	89+25.00	2.00' LT
93	89+25.00	2.00' LT	193	89+25.00	2.00' LT
94	89+25.00	2.00' LT	194	89+25.00	2.00' LT
95	89+25.00	2.00' LT	195	89+25.00	2.00' LT
96	89+25.00	2.00' LT	196	89+25.00	2.00' LT
97	89+25.00	2.00' LT	197	89+25.00	2.00' LT
98	89+25.00	2.00' LT	198	89+25.00	2.00' LT
99	89+25.00	2.00' LT	199	89+25.00	2.00' LT
100	89+25.00	2.00' LT	200	89+25.00	2.00' LT

COORDINATE POINTS

POINT NO.	STATION	OFFSET & SIDE	POINT NO.	STATION	OFFSET & SIDE
1	90+00.00	2.00' LT	101	90+00.00	2.00' LT
2	90+00.00	2.00' LT	102	90+00.00	2.00' LT
3	90+00.00	2.00' LT	103	90+00.00	2.00' LT
4	90+00.00	2.00' LT	104	90+00.00	2.00' LT
5	90+00.00	2.00' LT	105	90+00.00	2.00' LT
6	90+00.00	2.00' LT	106	90+00.00	2.00' LT
7	90+00.00	2.00' LT	107	90+00.00	2.00' LT
8	90+00.00	2.00' LT	108	90+00.00	2.00' LT
9	90+00.00	2.00' LT	109	90+00.00	2.00' LT
10	90+00.00	2.00' LT	110	90+00.00	2.00' LT
11	90+00.00	2.00' LT	111	90+00.00	2.00' LT
12	90+00.00	2.00' LT	112	90+00.00	2.00' LT
13	90+00.00	2.00' LT	113	90+00.00	2.00' LT
14	90+00.00	2.00' LT	114	90+00.00	2.00' LT
15	90+00.00	2.00' LT	115	90+00.00	2.00' LT
16	90+00.00	2.00' LT	116	90+00.00	2.00' LT
17	90+00.00	2.00' LT	117	90+00.00	2.00' LT
18	90+00.00	2.00' LT	118	90+00.00	2.00' LT
19	90+00.00	2.00' LT	119	90+00.00	2.00' LT
20	90+00.00	2.00' LT	120	90+00.00	2.00' LT
21	90+00.00	2.00' LT	121	90+00.00	2.00' LT
22	90+00.00	2.00' LT	122	90+00.00	2.00' LT
23	90+00.00	2.00' LT	123	90+00.00	2.00' LT
24	90+00.00	2.00' LT	124	90+00.00	2.00' LT
25	90+00.00	2.00' LT	125	90+00.00	2.00' LT
26	90+00.00	2.00' LT	126	90+00.00	2.00' LT
27	90+00.00	2.00' LT	127	90+00.00	2.00' LT
28	90+00.00	2.00' LT	128	90+00.00	2.00' LT
29	90+00.00	2.00' LT	129	90+00.00	2.00' LT
30	90+00.00	2.00' LT	130	90+00.00	2.00' LT
31	90+00.00	2.00' LT	131	90+00.00	2.00' LT
32	90+00.00	2.00' LT	132	90+00.00	2.00' LT
33	90+00.00	2.00' LT	133	90+00.00	2.00' LT
34	90+00.00	2.00' LT	134	90+00.00	2.00' LT
35	90+00.00	2.00' LT	135	90+00.00	2.00' LT
36	90+00.00	2.00' LT	136	90+00.00	2.00' LT
37	90+00.00	2.00' LT	137	90+00.00	2.00' LT
38	90+00.00	2.00' LT	138	90+00.00	2.00' LT
39	90+00.00	2.00' LT	139	90+00.00	2.00' LT
40	90+00.00	2.00' LT	140	90+00.00	2.00' LT
41	90+00.00	2.00' LT	141	90+00.00	2.00' LT
42	90+00.00	2.00' LT	142	90+00.00	2.00' LT
43	90+00.00	2.00' LT	143	90+00.00	2.00' LT
44	90+00.00	2.00' LT	144	90+00.00	2.00' LT
45	90+00.00	2.00' LT	145	90+00.00	2.00' LT
46	90+00.00	2.00' LT	146	90+00.00	2.00' LT
47	90+00.00	2.00' LT	147	90+00.00	2.00' LT
48	90+00.00	2.00' LT	148	90+00.00	2.00' LT
49	90+00.00	2.00' LT	149	90+00.00	2.00' LT
50	90+00.00	2.00' LT	150	90+00.00	2.00' LT
51	90+00.00	2.00' LT	151	90+00.00	2.00' LT
52	90+00.00	2.00' LT	152	90+00.00	2.00' LT
53	90+00.00	2.00' LT	153	90+00.00	2.00' LT
54	90+00.00	2.00' LT	154	90+00.00	2.00' LT
55	90+00.00	2.00' LT	155	90+00.00	2.00' LT
56	90+00.00	2.00' LT	156	90+00.00	2.00' LT
57	90+00.00	2.00' LT	157	90+00.00	2.00' LT
58	90+00.00	2.00' LT	158	90+00.00	2.00' LT
59	90+00.00	2.00' LT	159	90+00.00	2.00' LT
60	90+00.00	2.00' LT	160	90+00.00	2.00' LT
61	90+00.00	2.00' LT	161	90+00.00	2.00' LT
62	90+00.00	2.00' LT	162	90+00.00	2.00' LT
63	90+00.00	2.00' LT	163	90+00.00	2.00' LT
64	90+00.00	2.00' LT	164	90+00.00	2.00' LT
65	90+00.00	2.00' LT	165	90+00.00	2.00' LT
66	90+00.00	2.00' LT	166	90+00.00	2.00' LT
67	90+00.00	2.00' LT	167	90+00.00	

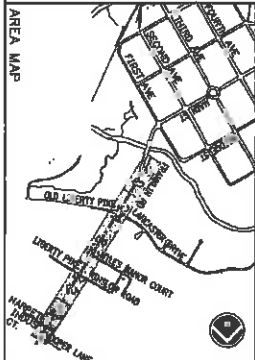
MATCH LINE STA. 95+50 - SEE SHEET NO. 8.3



NOTES:
1. SEE SHEET 5.1, GENERAL NOTES FOR LEGEND

COORDINATE POINTS

POINT NO.	STATION	OFFSET & SIDE	POINT NO.	STATION	OFFSET & SIDE
178	95+00.00	2.00' LT.	190	96+54.40	10.00' RT.
179	95+00.00	10.00' LT.	191	96+54.40	20.00' RT.
180	95+00.00	20.00' LT.	192	96+54.40	30.00' RT.
181	95+00.00	30.00' LT.	193	96+54.40	40.00' RT.
182	95+00.00	40.00' LT.	194	96+54.40	50.00' RT.
183	95+00.00	50.00' LT.	195	96+54.40	60.00' RT.
184	95+00.00	60.00' LT.	196	96+54.40	70.00' RT.
185	95+00.00	70.00' LT.	197	96+54.40	80.00' RT.
186	95+00.00	80.00' LT.	198	96+54.40	90.00' RT.
187	95+00.00	90.00' LT.	199	96+54.40	100.00' RT.
188	95+00.00	100.00' LT.	200	96+54.40	110.00' RT.



FRANKLIN CORRIDOR AND CONNECTOR STREETS ECONOMIC DEVELOPMENT PROJECT

E. G. & G., Inc.
Landscape Architecture & Planning
308 SOUTH MAIN STREET, SUITE 201, KNOX, TN 37917 / (606) 779-2700 FAX (606) 779-2701

Project No: 24012.14
Sheet Title: PROPOSED LAYOUT
Scale: 1" = 20'

CURVE DATA

CHORD	LENGTH	CHORD BEARING	CHORD BEARING	CHORD BEARING	CHORD BEARING
1	100.00	0.00°	0.00°	0.00°	0.00°
2	100.00	90.00°	90.00°	90.00°	90.00°
3	100.00	180.00°	180.00°	180.00°	180.00°
4	100.00	270.00°	270.00°	270.00°	270.00°

Franklin Road (US31, SR8)
S.V. 81+50 TO 101+50

Project No: 24012.14
Sheet No: 8.4

COORDINATE POINTS

POINT NO.	STATION	OFFSET & SIDE	POINT NO.	STATION	OFFSET & SIDE
201	95+00.00	10.00' LT.	212	96+54.40	10.00' RT.
202	95+00.00	20.00' LT.	213	96+54.40	20.00' RT.
203	95+00.00	30.00' LT.	214	96+54.40	30.00' RT.
204	95+00.00	40.00' LT.	215	96+54.40	40.00' RT.
205	95+00.00	50.00' LT.	216	96+54.40	50.00' RT.
206	95+00.00	60.00' LT.	217	96+54.40	60.00' RT.
207	95+00.00	70.00' LT.	218	96+54.40	70.00' RT.
208	95+00.00	80.00' LT.	219	96+54.40	80.00' RT.
209	95+00.00	90.00' LT.	220	96+54.40	90.00' RT.
210	95+00.00	100.00' LT.	221	96+54.40	100.00' RT.
211	95+00.00	110.00' LT.	222	96+54.40	110.00' RT.