

MEMORANDUM

August 9, 2012

TO: Board of Mayor and Aldermen

FROM: Eric Stuckey, City Administrator
David Parker, City Engineer/CIP Executive
Paul Holzen, Director of Engineering
William Banks, Staff Engineer

SUBJECT: Award of the Construction Contract for the 3rd Avenue North Extension Project (Bicentennial Park Phase I) (COF Contract No. 2012-0089)

Purpose

The purpose of this memo is to recommend Award of the Construction Contract for the 3rd Avenue North Extension Project (COF Contract No. 2012-0089) to The Parkes Companies, Inc.

Background

City staff has been working over the last few years to start construction of the 3rd Ave North Extension Project. This project currently has \$630,000 in TDOT/Federal Funding for the construction of a multi-use path system along the Harpeth River. State and Federal funds have slowed the project down by requiring it to go through TDOT local programs process to include environmental review, ROW review and Design Review. In an effort to get the roadway constructed as soon as possible staff has looked at the design and determined that we can build this project in two phases. The first phase (3rd Avenue N Extension Project) will be fully City funded and generally include the roadway, bridge, lighting, utilities, landscaping and irrigation. Phase II will include the trail, selected park features, additional landscaping and irrigation.

To help with the bidding process, a Professional Services Agreement (COF Contract No. 2012-0068) for full C.E.I. services was awarded to Wisser Company, LLC on May 8, 2012 for an amount not to exceed \$649,225.00. The bids for the first phase were opened on July 31, 2012, at 2:00 p.m. with The Parkes Companies being the apparent low bidder. The Notice to Proceed (NTP) will be issued soon after the bid is awarded and contracts finalized.

Also, a Bid Alternate was included with the bid package. This included a Redi-Rock stacked block style retaining wall that replaces a combination of gabion baskets and loose boulders. Staff will be bringing this change order to the BOMA soon, which will be a decrease in the contract amount below.

Financial Impact

Construction costs of \$4,795,129.72. (May be decreased with the first Change Order).

Recommendation

Staff recommends awarding the construction contract to The Parkes Companies, Inc. in the amount of \$4,795,129.72.



MEMORANDUM

August 9, 2012

TO: Board of Mayor and Aldermen

FROM: Eric S. Stuckey, City Administrator
David Parker, P.E., City Engineer
Paul P. Holzen, P.E, Director of Engineering
William Banks, Staff Engineer

SUBJECT: Discussion regarding the 3rd Avenue North Extension Project's Streetscape Elements

Purpose

The purpose of this memorandum is to provide the Board of Mayor and Aldermen (BOMA) with the necessary information regarding the 3rd Ave North Extension Project's Streetscape Elements.

Background

City staff has been working over the last few years to start construction of the 3rd Ave North Project. This project currently has \$630,000 in TDOT/Federal Funding for the construction of a multi-use path system along the Harpeth River. State and Federal funds have slowed the project down by requiring it to go through TDOT local programs process to include environmental review, ROW review and Design Review. In an effort to get the roadway constructed as soon as possible staff has looked at the design and determined that we can build this project in two phases. The first phase will be fully City funded and generally include the roadway, bridge, lighting, utilities, landscaping and irrigation. Phase II will include the trail, selected park features, additional landscaping and irrigation.

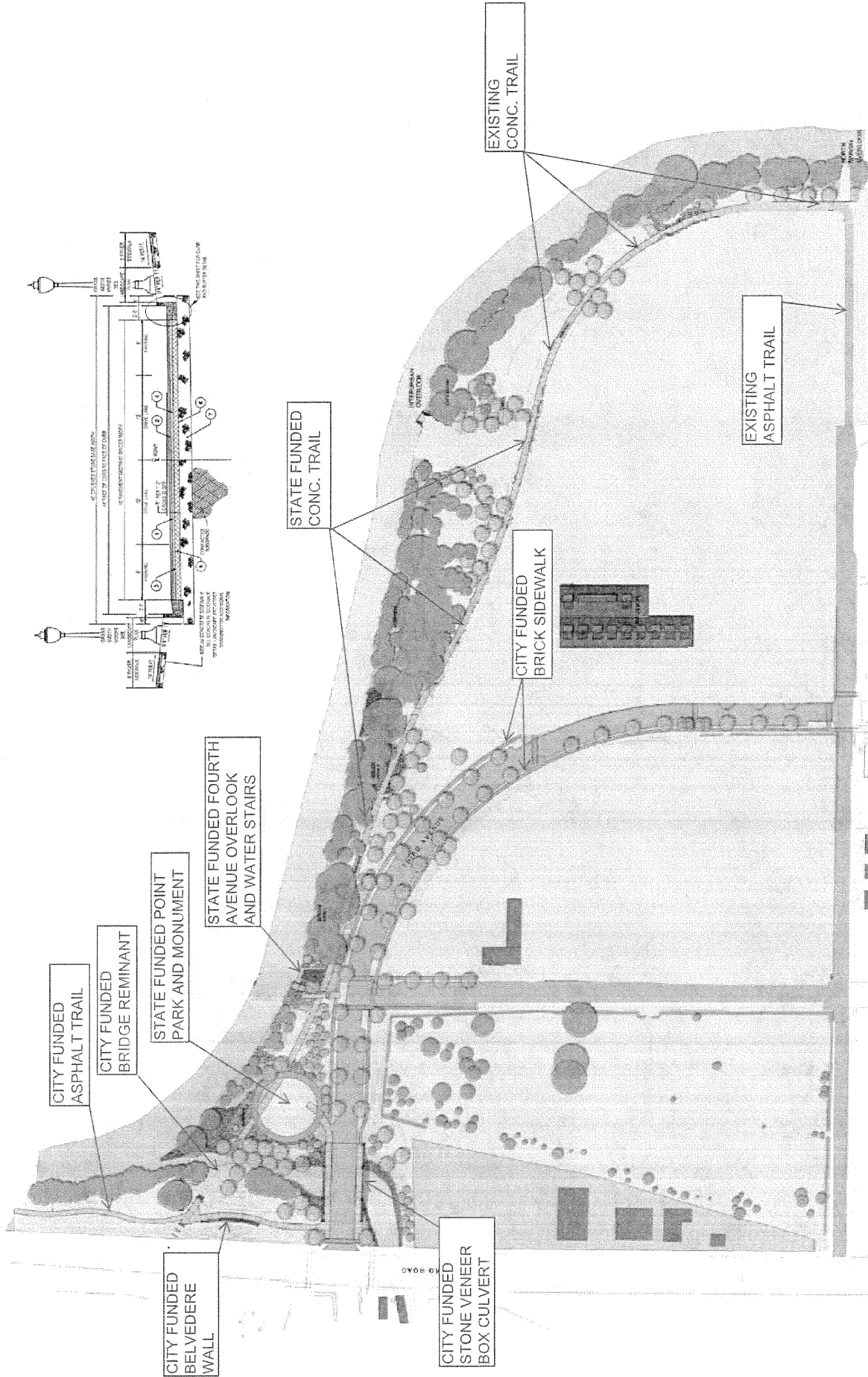
The bid opening for the roadway project was held on July 31, 2012. The apparent low bid is \$4,795,129.72.

Streetscape Elements included with the Roadway Project:

- Pre-cast Bridge with Limestone Caps over Crab Orchard Stone Veneer
- Belvedere Entrance Wall along 5th Avenue North
- Decorative Retaining Wall to match Bridge's Stone Veneer
- Bridge Remnants
- Limestone Street Markers
- Decorative Street Signs with Bronze Medallions
- Decorative Brick Paver Sidewalks and Brick Paver Crosswalks that match the 2008 3rd Avenue North Streetscape Project
- 22 Decorative Street Lights
- 57 Parking Stalls
- Landscaping and Irrigation

Recommendation

None. This Item is just for BOMA discussion.



CITY FUNDED ASPHALT TRAIL

CITY FUNDED BRIDGE REMNANT

STATE FUNDED POINT PARK AND MONUMENT

STATE FUNDED FOURTH AVENUE OVERLOOK AND WATER STAIRS

CITY FUNDED BELVEDERE WALL

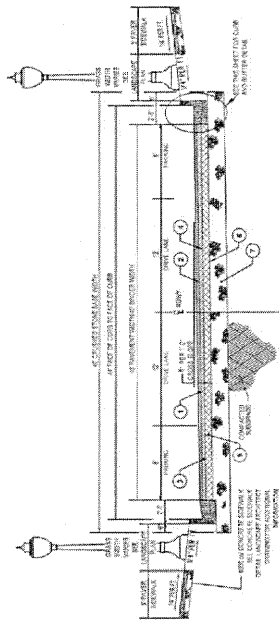
CITY FUNDED STONE VENEER BOX CULVERT

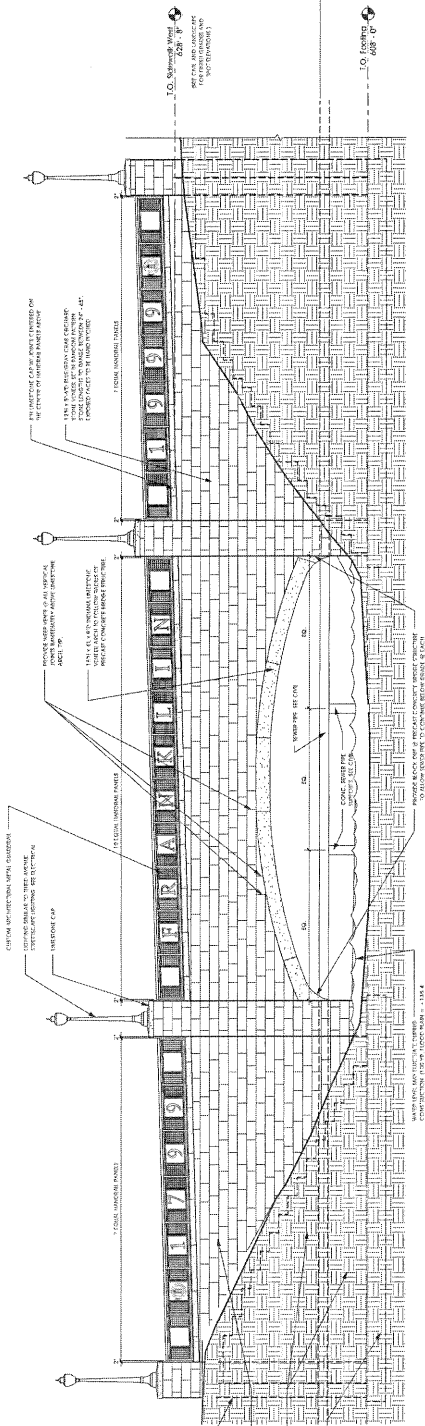
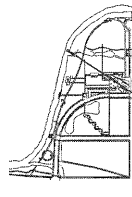
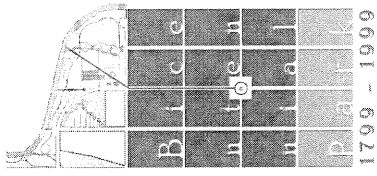
STATE FUNDED CONC. TRAIL

CITY FUNDED BRICK SIDEWALK

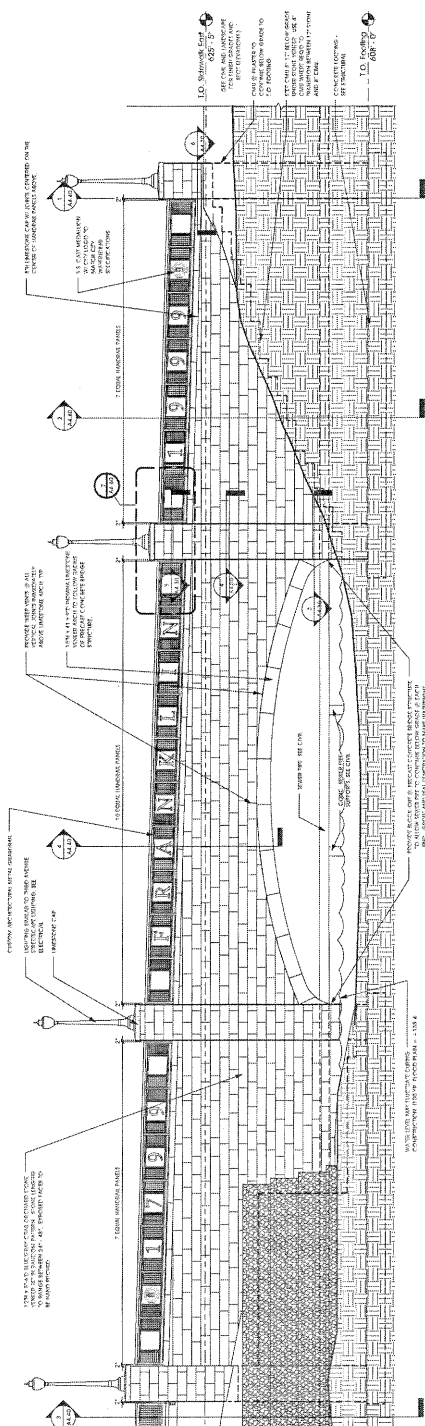
EXISTING CONC. TRAIL

EXISTING ASPHALT TRAIL

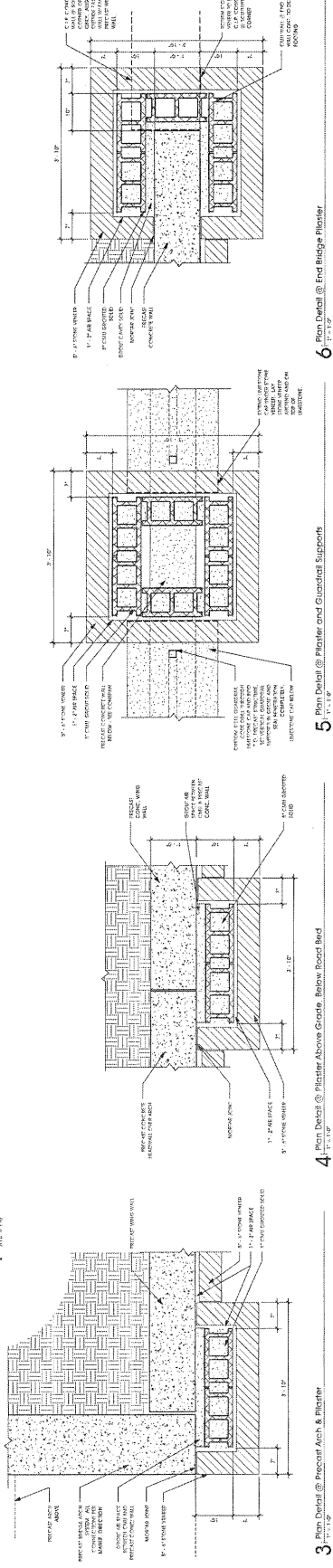




2 Third Avenue Bridge - North Elevation
3/17/11 1:2



1 Third Avenue Bridge - South Elevation
3/17/11 1:2

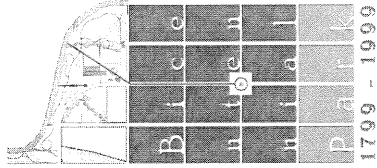


3 Plan Detail @ Precast Arch & Parapet
3/17/11 1:2

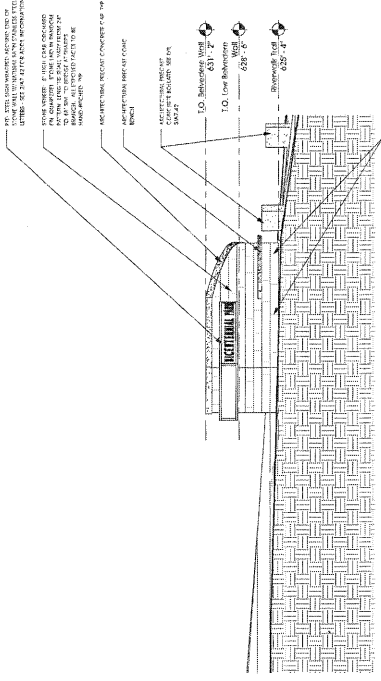
4 Plan Detail @ Plaster Above Grade Below Road Bed
3/17/11 1:2

5 Plan Detail @ Plaster and Groutball Supports
3/17/11 1:2

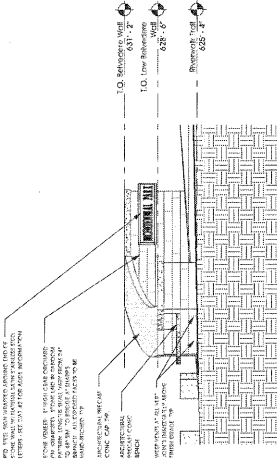
6 Plan Detail @ End Bridge Plaster
3/17/11 1:2



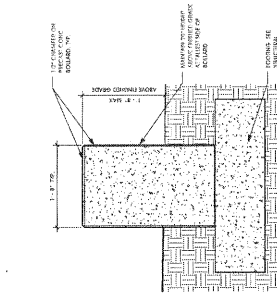
Scale: 1/8" = 1'-0"
Sheet: A7.42
Date: 08/14/18
Drawn: [Name]
Checked: [Name]
Project: Bicentennial Park



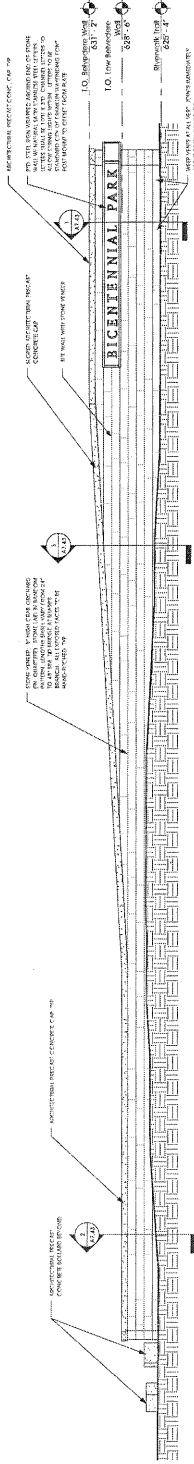
3 Belvedere Wall Elevation - South
1/4" = 1'-0"



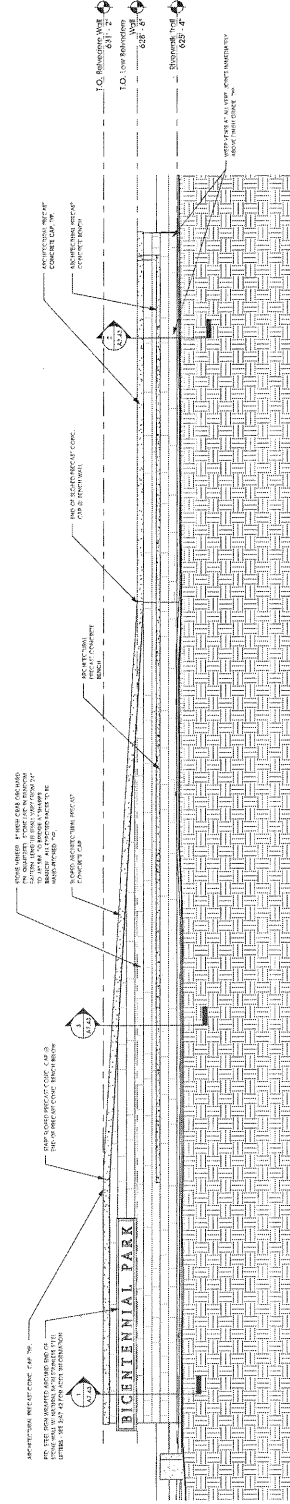
4 Belvedere Wall Elevation - North
1/4" = 1'-0"



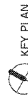
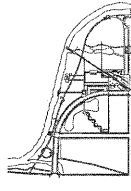
5 Section Detail @ Concrete Bullhead
1/4" = 1'-0"



2 Belvedere Wall Elevation - West
1/4" = 1'-0"



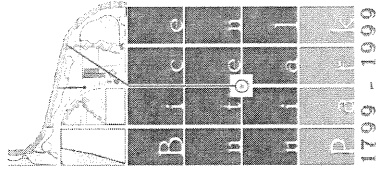
1 Belvedere Wall Elevation - East
1/4" = 1'-0"



© 2018 Studio Eight Design, Inc. All Rights Reserved.
This drawing is the property of Studio Eight Design, Inc. and is not to be reproduced without the written consent of Studio Eight Design, Inc.



Belvedere Wall
Elevations



1799 - 1999

JOB # 0002.02

Owner and Designer

Architect

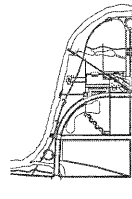
10.15.10

10.15.10

10.15.10

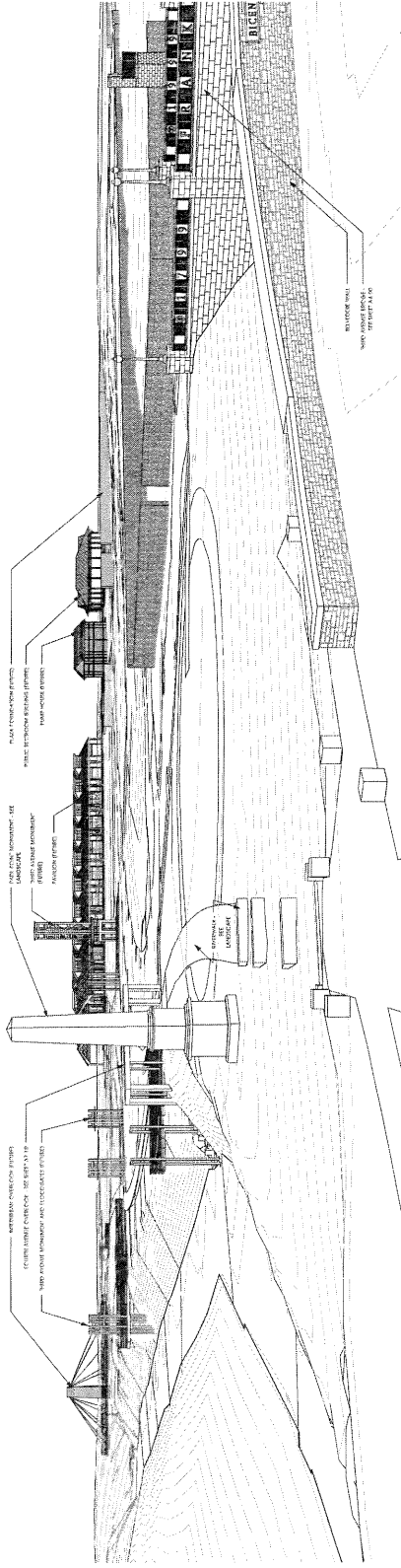
10.15.10

10.15.10

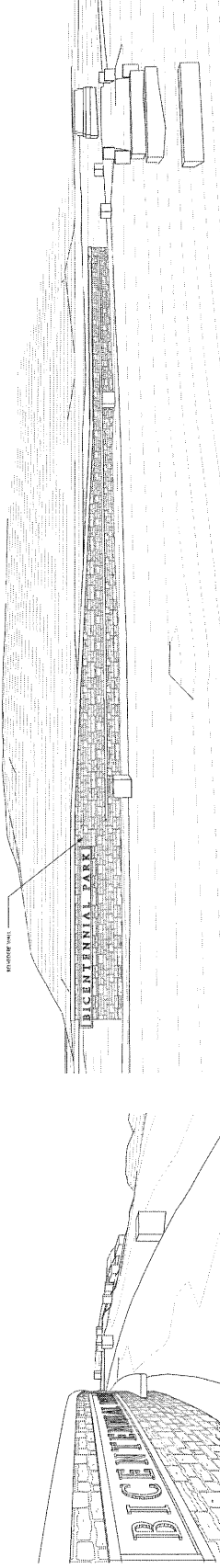


KEY PLAN

Scale: 1/8" = 1'-0"

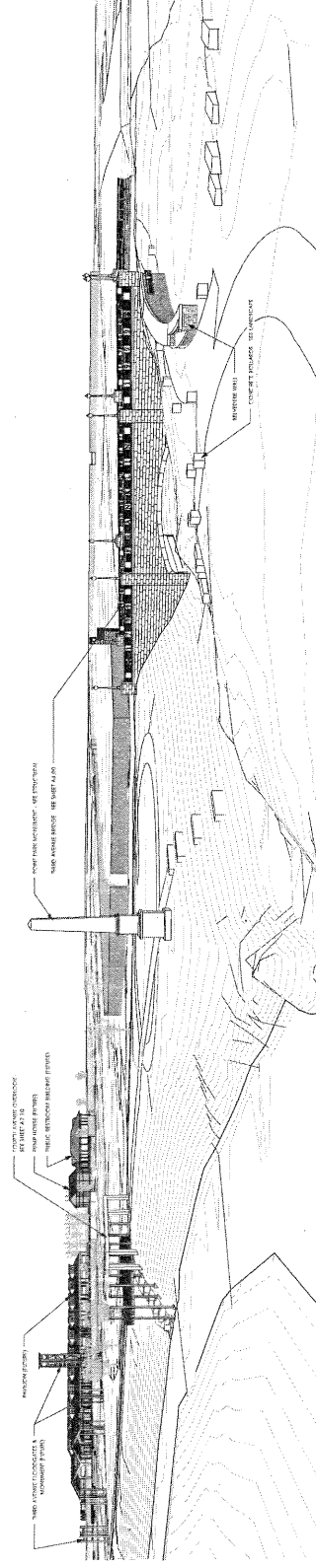


4 Belvedere Wall - View Looking East Over Sharp's Branch

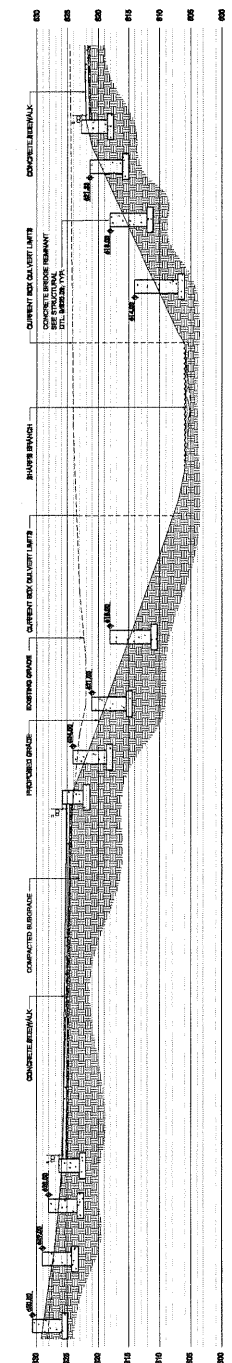
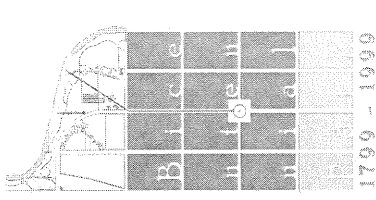


3 Belvedere Wall - View of East Wall Looking North

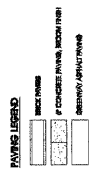
2 Belvedere Wall - View Looking Towards Hillsboro Road



1 Belvedere Wall - View Looking South Towards Third Avenue Bridge



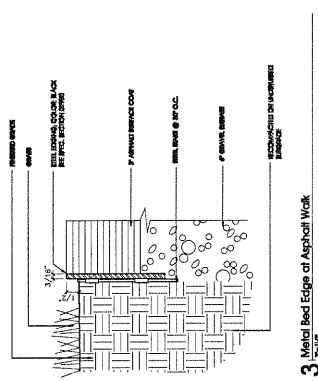
2 Bridge Branch Section With Bridge Remnants



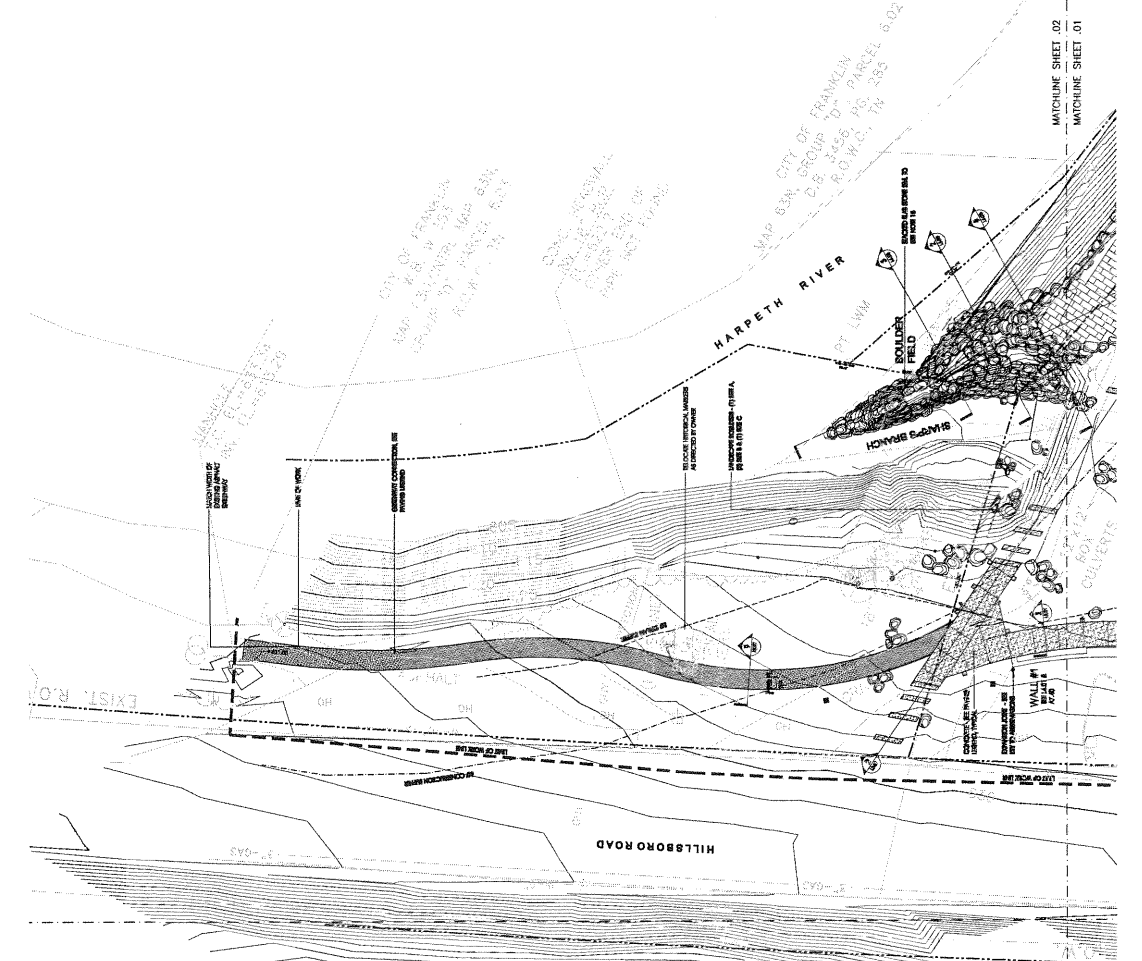
Paving Legend

SITE NOTES:

1. ALL CONSTRUCTION SHALL BE IN ACCORDANCE WITH THE CITY OF FRANKLIN, TENNESSEE, ORDINANCES AND SPECIFICATIONS.
2. ALL CONSTRUCTION SHALL BE IN ACCORDANCE WITH THE CITY OF FRANKLIN, TENNESSEE, ORDINANCES AND SPECIFICATIONS.
3. ALL CONSTRUCTION SHALL BE IN ACCORDANCE WITH THE CITY OF FRANKLIN, TENNESSEE, ORDINANCES AND SPECIFICATIONS.
4. ALL CONSTRUCTION SHALL BE IN ACCORDANCE WITH THE CITY OF FRANKLIN, TENNESSEE, ORDINANCES AND SPECIFICATIONS.
5. ALL CONSTRUCTION SHALL BE IN ACCORDANCE WITH THE CITY OF FRANKLIN, TENNESSEE, ORDINANCES AND SPECIFICATIONS.
6. ALL CONSTRUCTION SHALL BE IN ACCORDANCE WITH THE CITY OF FRANKLIN, TENNESSEE, ORDINANCES AND SPECIFICATIONS.
7. ALL CONSTRUCTION SHALL BE IN ACCORDANCE WITH THE CITY OF FRANKLIN, TENNESSEE, ORDINANCES AND SPECIFICATIONS.
8. ALL CONSTRUCTION SHALL BE IN ACCORDANCE WITH THE CITY OF FRANKLIN, TENNESSEE, ORDINANCES AND SPECIFICATIONS.
9. ALL CONSTRUCTION SHALL BE IN ACCORDANCE WITH THE CITY OF FRANKLIN, TENNESSEE, ORDINANCES AND SPECIFICATIONS.
10. ALL CONSTRUCTION SHALL BE IN ACCORDANCE WITH THE CITY OF FRANKLIN, TENNESSEE, ORDINANCES AND SPECIFICATIONS.
11. ALL CONSTRUCTION SHALL BE IN ACCORDANCE WITH THE CITY OF FRANKLIN, TENNESSEE, ORDINANCES AND SPECIFICATIONS.
12. ALL CONSTRUCTION SHALL BE IN ACCORDANCE WITH THE CITY OF FRANKLIN, TENNESSEE, ORDINANCES AND SPECIFICATIONS.
13. ALL CONSTRUCTION SHALL BE IN ACCORDANCE WITH THE CITY OF FRANKLIN, TENNESSEE, ORDINANCES AND SPECIFICATIONS.
14. ALL CONSTRUCTION SHALL BE IN ACCORDANCE WITH THE CITY OF FRANKLIN, TENNESSEE, ORDINANCES AND SPECIFICATIONS.
15. ALL CONSTRUCTION SHALL BE IN ACCORDANCE WITH THE CITY OF FRANKLIN, TENNESSEE, ORDINANCES AND SPECIFICATIONS.
16. ALL CONSTRUCTION SHALL BE IN ACCORDANCE WITH THE CITY OF FRANKLIN, TENNESSEE, ORDINANCES AND SPECIFICATIONS.
17. ALL CONSTRUCTION SHALL BE IN ACCORDANCE WITH THE CITY OF FRANKLIN, TENNESSEE, ORDINANCES AND SPECIFICATIONS.
18. ALL CONSTRUCTION SHALL BE IN ACCORDANCE WITH THE CITY OF FRANKLIN, TENNESSEE, ORDINANCES AND SPECIFICATIONS.
19. ALL CONSTRUCTION SHALL BE IN ACCORDANCE WITH THE CITY OF FRANKLIN, TENNESSEE, ORDINANCES AND SPECIFICATIONS.
20. ALL CONSTRUCTION SHALL BE IN ACCORDANCE WITH THE CITY OF FRANKLIN, TENNESSEE, ORDINANCES AND SPECIFICATIONS.



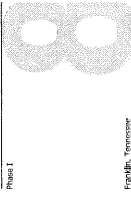
3 Metal Bed Edge at Asphalt Walk



MATCHLINE SHEET 02
MATCHLINE SHEET 01

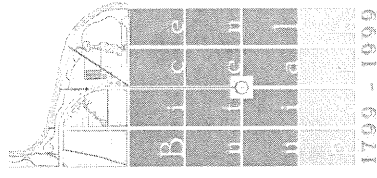


Mass City of Franklin
Franklin, Tennessee



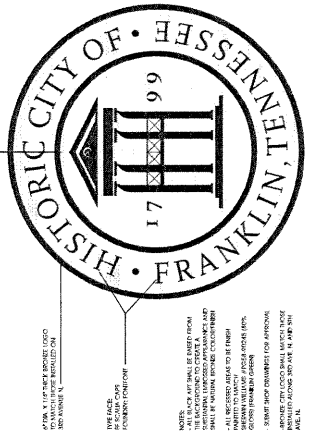
STUDIO EIGHT DESIGN
MATT TAYLOR • ARCHITECT

City of Franklin
Franklin, Tennessee



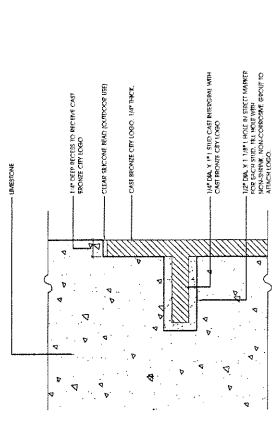
ROSS/FOWLER
LANDSCAPE ARCHITECTURE
1000 N. HICKORY ST.
FRANKLIN, TENNESSEE 37067

18-000000
SEE DRAWING OF 18-000000, INITIAL
NOTE: ALL 18-000000 INITIALS MUST BE APPROVED BY THE CITY OF FRANKLIN, TENNESSEE.



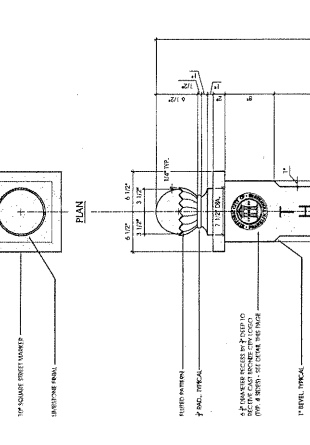
BRONZE CITY LOGO
SCALE: 1/4" = 1"

NOTE: ALL 18-000000 INITIALS MUST BE APPROVED BY THE CITY OF FRANKLIN, TENNESSEE.
ALL 18-000000 INITIALS MUST BE APPROVED BY THE CITY OF FRANKLIN, TENNESSEE.
ALL 18-000000 INITIALS MUST BE APPROVED BY THE CITY OF FRANKLIN, TENNESSEE.



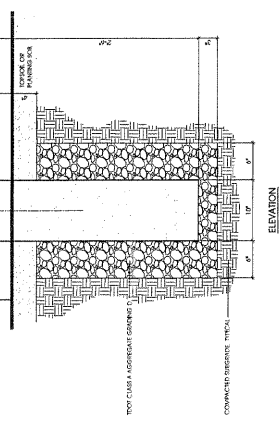
2 Installation of Bronze City Logo to Steel Markers
1/4" Top

18-000000
SEE DRAWING OF 18-000000, INITIAL
NOTE: ALL 18-000000 INITIALS MUST BE APPROVED BY THE CITY OF FRANKLIN, TENNESSEE.



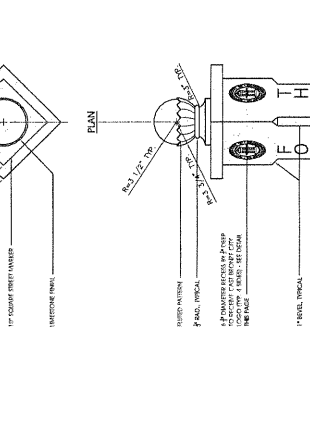
3 Limestone Street Marker
1/4" Top

NOTE: ALL 18-000000 INITIALS MUST BE APPROVED BY THE CITY OF FRANKLIN, TENNESSEE.
ALL 18-000000 INITIALS MUST BE APPROVED BY THE CITY OF FRANKLIN, TENNESSEE.
ALL 18-000000 INITIALS MUST BE APPROVED BY THE CITY OF FRANKLIN, TENNESSEE.



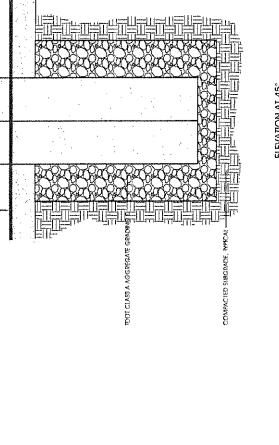
4 Limestone Street Marker at 45°
1/4" Top

18-000000
SEE DRAWING OF 18-000000, INITIAL
NOTE: ALL 18-000000 INITIALS MUST BE APPROVED BY THE CITY OF FRANKLIN, TENNESSEE.

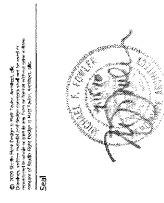


5 Limestone Street Marker
1/4" Top

NOTE: ALL 18-000000 INITIALS MUST BE APPROVED BY THE CITY OF FRANKLIN, TENNESSEE.
ALL 18-000000 INITIALS MUST BE APPROVED BY THE CITY OF FRANKLIN, TENNESSEE.
ALL 18-000000 INITIALS MUST BE APPROVED BY THE CITY OF FRANKLIN, TENNESSEE.

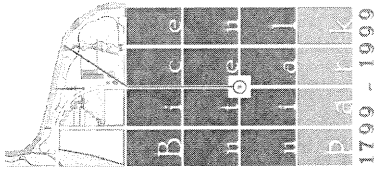


6 Limestone Street Marker
1/4" Top



Site Details

City of Franklin
Franklin, Tennessee



1799 - 1999

ISSUES AND REVISIONS

NO.	DATE	DESCRIPTION
0007.02		
01.04.2002		

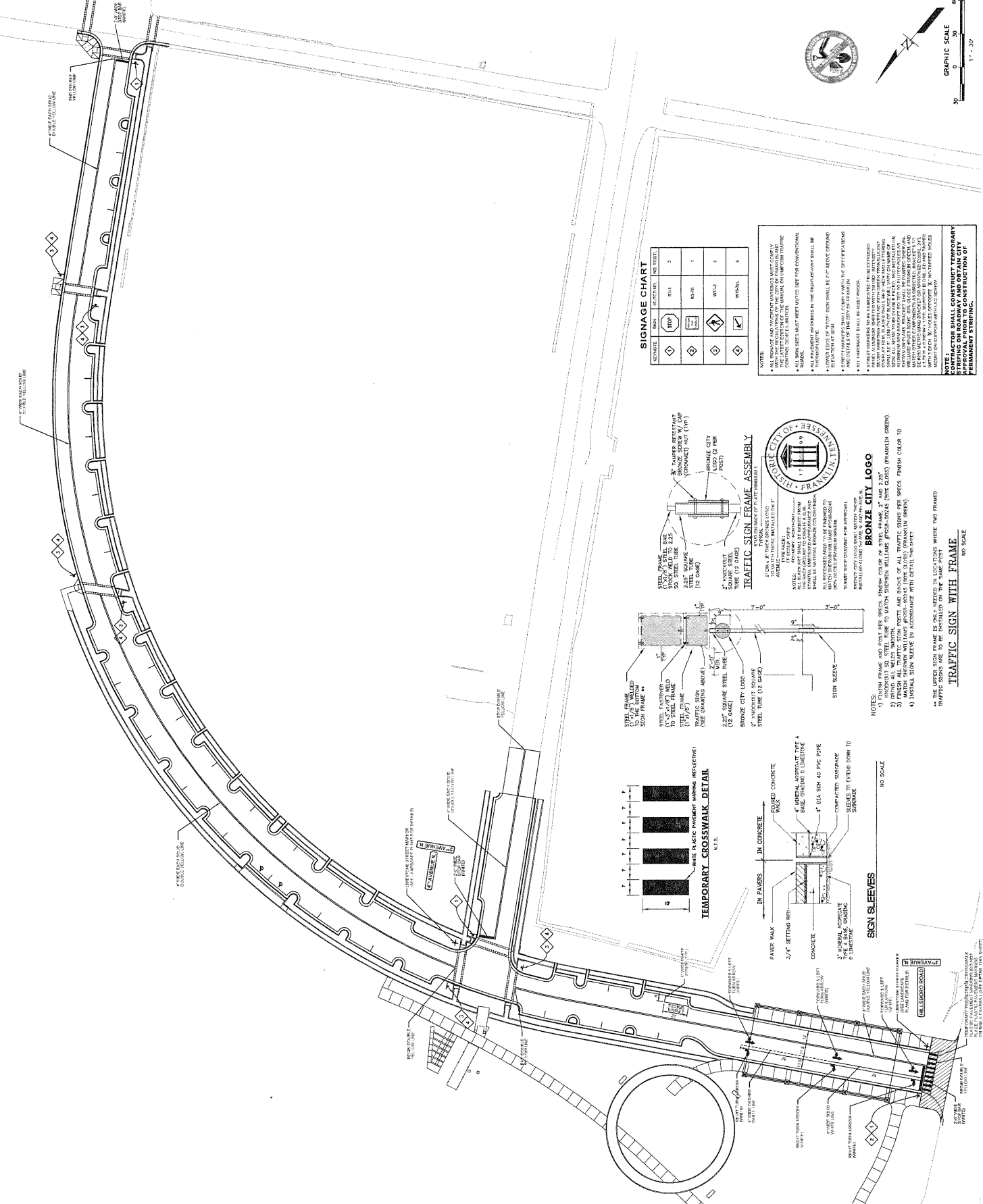
BARGE CAULTHEN ASSOCIATES
1000 OAK CREEK AVENUE, SUITE 200
NASHVILLE, TENNESSEE 37217
TEL: 615.351.3312 FAX: 615.351.3311
WWW.BARGECAULTHEN.COM

Scale



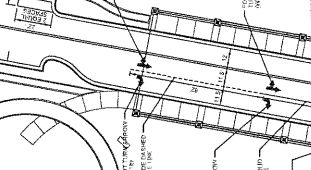
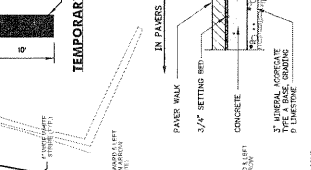
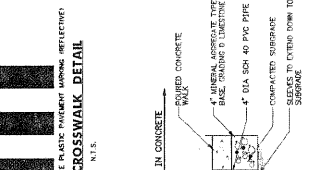
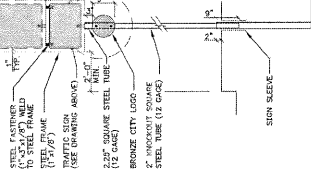
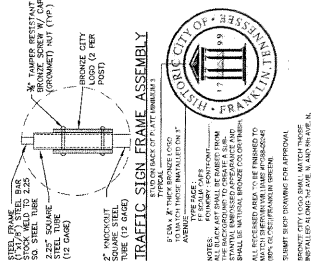
Proposed Roadway Signage & Marking Plan
Third Ave. & Fourth Ave.

C3.05



LANEWAYS	DATA	LOCATION	NO. SIGNS
1	STOP		3
2	YIELD		1
3	AWAY FROM TRAFFIC		1
4	WALK		6

- NOTES:
- ALL SIGNAGE AND INCREMENT MARKINGS MUST COMPLY WITH THE 2003 MUTCD, WITH THE EXCEPTION OF THE MUTCD CHANGES TO THE SIGNAGE CHART.
 - SCALE: SIGN SIGNS MUST BE SET WITHIN THE RIGHT-OF-WAY FOR CONVENTIONAL TRAFFIC.
 - ALL SIGNAGE MARKINGS IN THE RIGHT-OF-WAY SHALL BE RECONSTRUCTED BY THE CONTRACTOR.
 - CONTRACTOR SHALL CONSTRUCT TEMPORARY APPROVAL PAVEMENT TO CONSTRUCTION OF PERMANENT STRIPING.



- NOTES:
- FINISH FRAME AND POST PER SPEC. FINISH COLOR OF STEEL FRAME, 2" AND 2 1/2" DIAMETER. ALL TRAFFIC SIGN POSTS AND SIGNS OF ALL TRAFFIC SIGNS PER SPEC. FINISH COLOR TO MATCH SHERRILL WILLIAMS POSTS-SIGNS (SPEC. GREEN).
 - FINISH ALL TRAFFIC SIGN POSTS AND SIGNS OF ALL TRAFFIC SIGNS PER SPEC. FINISH COLOR TO MATCH SHERRILL WILLIAMS POSTS-SIGNS (SPEC. GREEN).
 - INSTALL SIGN SLEEVE IN ACCORDANCE WITH INSTALL SHEET.
 - THE LOWER SIGN FRAME IS ONLY NEEDED IN LOCATIONS WHERE TWO FRAMED TRAFFIC SIGNS ARE TO BE INSTALLED ON THE SAME POST.

- NOTES:
- 1/2" DIA. X 10' HIGH BRONZE CITY LOGO SHALL BE FABRICATED FROM EXISTING TRAFFIC SIGNAGE MATERIALS WITH GREEN FINISH COLOR. ALL LOGOS SHALL BE SET WITHIN THE RIGHT-OF-WAY FOR CONVENTIONAL TRAFFIC.
 - ALL LOGOS SHALL BE SET WITHIN THE RIGHT-OF-WAY FOR CONVENTIONAL TRAFFIC.
 - ALL LOGOS SHALL BE SET WITHIN THE RIGHT-OF-WAY FOR CONVENTIONAL TRAFFIC.
 - ALL LOGOS SHALL BE SET WITHIN THE RIGHT-OF-WAY FOR CONVENTIONAL TRAFFIC.

- NOTES:
- 1" DIA. X 4' HIGH BRONZE CITY LOGO SHALL BE FABRICATED FROM EXISTING TRAFFIC SIGNAGE MATERIALS WITH GREEN FINISH COLOR. ALL LOGOS SHALL BE SET WITHIN THE RIGHT-OF-WAY FOR CONVENTIONAL TRAFFIC.
 - ALL LOGOS SHALL BE SET WITHIN THE RIGHT-OF-WAY FOR CONVENTIONAL TRAFFIC.
 - ALL LOGOS SHALL BE SET WITHIN THE RIGHT-OF-WAY FOR CONVENTIONAL TRAFFIC.
 - ALL LOGOS SHALL BE SET WITHIN THE RIGHT-OF-WAY FOR CONVENTIONAL TRAFFIC.

- NOTES:
- 1" DIA. X 4' HIGH BRONZE CITY LOGO SHALL BE FABRICATED FROM EXISTING TRAFFIC SIGNAGE MATERIALS WITH GREEN FINISH COLOR. ALL LOGOS SHALL BE SET WITHIN THE RIGHT-OF-WAY FOR CONVENTIONAL TRAFFIC.
 - ALL LOGOS SHALL BE SET WITHIN THE RIGHT-OF-WAY FOR CONVENTIONAL TRAFFIC.
 - ALL LOGOS SHALL BE SET WITHIN THE RIGHT-OF-WAY FOR CONVENTIONAL TRAFFIC.
 - ALL LOGOS SHALL BE SET WITHIN THE RIGHT-OF-WAY FOR CONVENTIONAL TRAFFIC.

- NOTES:
- 1" DIA. X 4' HIGH BRONZE CITY LOGO SHALL BE FABRICATED FROM EXISTING TRAFFIC SIGNAGE MATERIALS WITH GREEN FINISH COLOR. ALL LOGOS SHALL BE SET WITHIN THE RIGHT-OF-WAY FOR CONVENTIONAL TRAFFIC.
 - ALL LOGOS SHALL BE SET WITHIN THE RIGHT-OF-WAY FOR CONVENTIONAL TRAFFIC.
 - ALL LOGOS SHALL BE SET WITHIN THE RIGHT-OF-WAY FOR CONVENTIONAL TRAFFIC.
 - ALL LOGOS SHALL BE SET WITHIN THE RIGHT-OF-WAY FOR CONVENTIONAL TRAFFIC.

- NOTES:
- 1" DIA. X 4' HIGH BRONZE CITY LOGO SHALL BE FABRICATED FROM EXISTING TRAFFIC SIGNAGE MATERIALS WITH GREEN FINISH COLOR. ALL LOGOS SHALL BE SET WITHIN THE RIGHT-OF-WAY FOR CONVENTIONAL TRAFFIC.
 - ALL LOGOS SHALL BE SET WITHIN THE RIGHT-OF-WAY FOR CONVENTIONAL TRAFFIC.
 - ALL LOGOS SHALL BE SET WITHIN THE RIGHT-OF-WAY FOR CONVENTIONAL TRAFFIC.
 - ALL LOGOS SHALL BE SET WITHIN THE RIGHT-OF-WAY FOR CONVENTIONAL TRAFFIC.

