

RESOLUTION 2012-32
A RESOLUTION ESTABLISHING NAMES FOR UNNAMED STREAMS
IN THE CITY OF FRANKLIN THAT DRAIN INTO THE HARPETH
RIVER AND ITS TRIBUTARIES

WHEREAS, the City of Franklin wishes to clarify nomenclature of local streams and remove any inconsistencies that may exist in order to enhance communication between the City of Franklin, its citizens, and other local, state, and federal agencies; and

WHEREAS, the City of Franklin, after consultation with appropriate authorities, and in accordance with guidelines established by the U.S. Board on Geographic Names of the U.S. Geological Survey, has developed a Stream Naming Plan for the unnamed streams that course through the City, which Plan is attached to this Resolution as Exhibit A; and

WHEREAS, the City of Franklin proposes to submit the stream names proposed in Exhibit A to the U.S. Board on Geographic Names of The U.S. Geological Survey, and following approval, to utilize the approved stream names on all local maps, as appropriate.

NOW, THEREFORE, BE IT RESOLVED by the Board of Mayor and Aldermen of the City of Franklin, Tennessee that:

1. The Board of Mayor and Aldermen of the City of Franklin do hereby accept the Stream Naming Plan for the unnamed streams that course through the City, which is attached to this Resolution as Exhibit A, which specifically recommends the following stream names:

- Hatcher Spring Creek
- Glass Branch
- Thompson-Shelton Branch
- Jewell Branch
- Green Hill Branch
- Boyd Mill Branch
- Woodland Branch
- More Spring
- Livingfield Branch
- Carlisle Branch
- Scruggs Branch
- Hamilton-Brown Branch
- Cowell Branch
- Guffee Branch
- Pewitt Branch
- Sappington Branch
- Willoughby Branch
- Harvey Spring
- Pickering Branch

German Branch
McKays Branch
Wilson Spring Branch
Herbert Branch
Nolen Branch
Harlinsdale Spring
Ralston Creek
Huffine Spring Branch
Royal Branch
Cameron Spring
Parrish Spring Branch
Glen Echo Branch
Robinson Spring Branch
Carothers Branch
Ladd Branch
Bishop Branch
Martin-Hughes Branch
Halfacre Branch
Pratt Creek
Lookout Hill Branch
Shumate Branch
Edgmon Branch

2. The Engineering Department is hereby authorized to forward a copy of this Resolution to the U.S. Board on Geographic Names, along with the required application forms.
3. The Board of Mayor and Aldermen of the City of Franklin requests that the U.S. Board on Geographic Names take the Board's Resolution into consideration and approve the application(s).
4. This Resolution shall become effective upon its adoption.

Adopted this ___ day of _____, 2012.

ATTEST:

CITY OF FRANKLIN, TENNESSEE

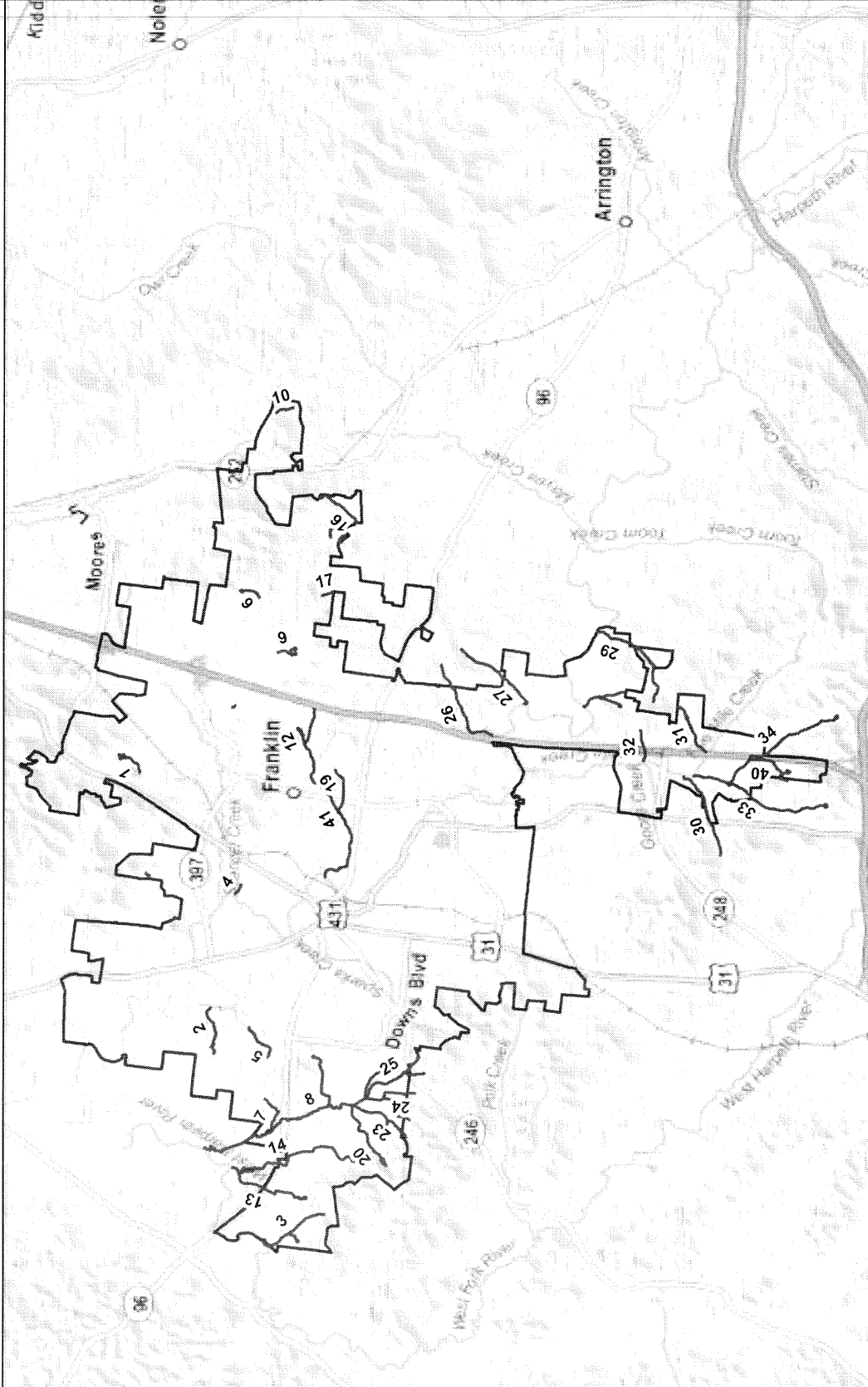
By: _____
Eric S. Stuckey
City Administrator

By: _____
Dr. Ken Moore
Mayor

Approved as to form:

Kristen L. Corn
Staff Attorney

Number	Name
1	Parish Branch
2	Livingfield Branch
3	Boyd Mill Branch
4	Harlinsdale Spring
5	Carlisle Branch
6	Harvey Spring
7	Hamilton-Brown Branch
8	Hatcher Spring
9	Pickering Branch
10	Herbert Branch
11	Woodland Branch
12	Huffine Spring Branch
13	Jewell Branch
14	Glass Branch
15	Green Hill Branch
16	Wilson Spring Branch
17	German Branch
18	Nolen Branch
19	Royal Branch
20	Thompson-Shelton Branch
21	Pewitt Branch
22	Cowell Branch
23	Guffee Branch
24	Sappington Branch
25	Scruggs Branch
26	Robinson Spring Branch
27	Carother Branch
28	Ladd Branch
29	Bishop Branch
30	Edgmon Branch
31	Halfacre Branch
32	Martin Hughes Branch
33	Shuemate Branch
34	Platt Creek
35	McKays Branch
36	Cameron Spring
37	Glen Echo Branch
38	More Spring
39	Willoughby Branch
40	Lookout Hill Branch
41	Ralston Branch

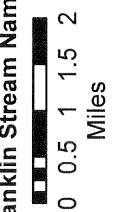


FRANKLIN
 4 TEXAS
 7513312
 ENGINEERING DEPARTMENT
 THE MOST AUTHENTIC INFORMATION AVAILABLE
 OBTAINED FROM PUBLIC RECORDS
 OBTAINED FROM PUBLIC RECORDS. ALL DATA COPYRIGHT
 © 2011 CITY OF FRANKLIN, TN. ALL RIGHTS RESERVED.



City of Franklin Stream Naming Plan

Exhibit A



- Legend**
- City Limits
 - Unnamed Streams



May 29, 2012

TO: Board of Mayor and Aldermen

FROM: Eric Stuckey, City Administrator
David Parker, City Engineer/CIP Executive
Paul Holzen, Director of Engineering
Crystal Bishop, Stormwater Coordinator

SUBJECT: Consideration of Resolution 2012-32: A Resolution Establishing Names for Unnamed Streams in Franklin that Drain into the Harpeth River and its Tributaries

Purpose

The purpose of this memorandum is to provide the Board of Mayor and Aldermen (BOMA) with information to consider a resolution establishing names for unnamed streams in Franklin that course through the corporate boundary. The resolution would be included with the application to the U.S. Board on Geographic Names (BGN).

Background

Currently, City staff relies on geographical information system (GIS) information from the U.S. Geological Survey (USGS), the State of Tennessee, and Williamson County to determine the name of a stream. However, many inconsistencies lie between the three entities, which hinder communication between staff, citizens, and the development community. To correct this issue, staff is in the process of filing a Proposed Stream Name Application with the U.S. Board on Geographic Names (BGN).

The procedure for changing geographical names is fairly simple as any individual or entity may apply for a name change and the application can be completed on the USGS website.

1. Submit an application for change to the Executive Secretary of BGN, including supporting documents such as a City Resolution.
2. The BGN consults with State and Local (if applicant is not a Municipality) organizations on any conflicts or duplicates.
3. The BGN makes a decision in about 3 to 6 months, with the change appearing on the next federally published map. An approval letter is mailed to the applicant.

Over the past few months staff has been field verifying if unnamed waterbodies on USGS topographic maps are streams or wet-weather conveyances. City Staff has listed names for the 42 streams. The names are derived from information gathered during public meetings and by using topographic maps, deed records and registered landmarks as references.

Financial Impact

None

Recommendation

Staff recommends approval of Resolution 2012-32: A Resolution Establishing Names for Unnamed Streams in Franklin that Drain into the Harpeth River and its Tributaries.